

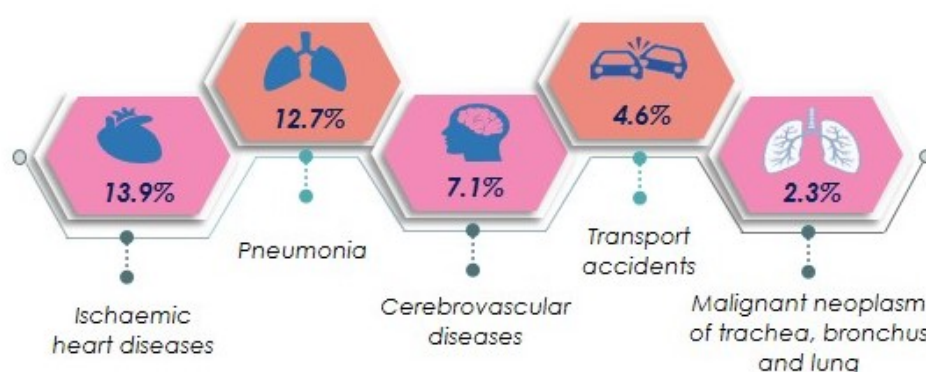


## STATISTICS ON CAUSES OF DEATH, MALAYSIA, 2018

### i. Principal Causes of Death

#### Ischaemic heart diseases remains as the principal causes of death

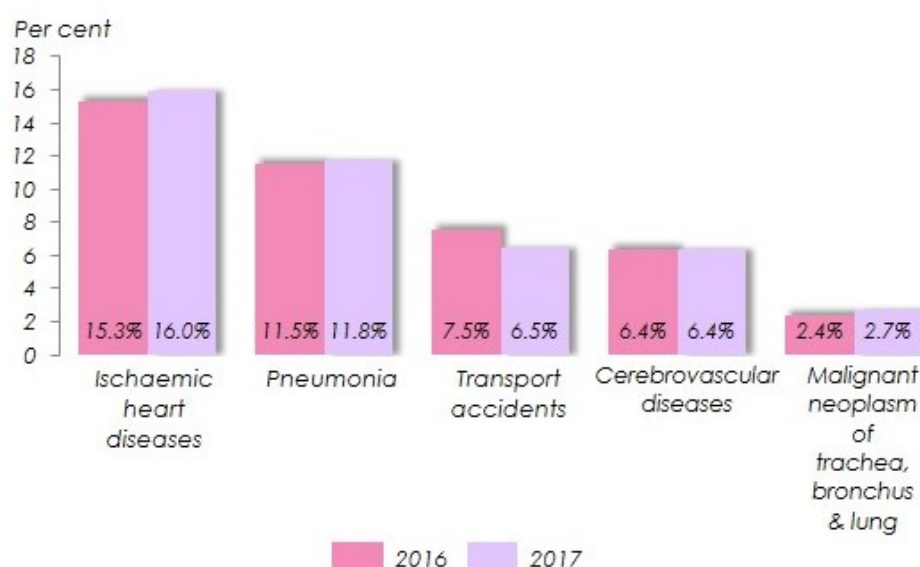
In 2017, the per cent of deaths caused by Ischaemic heart diseases was 13.9 per cent, followed by Pneumonia (12.7%), Cerebrovascular diseases (7.1%), Transport accidents (4.6%) and Malignant neoplasm of trachea, bronchus and lung (2.3%).



### ii. Principal Causes of Death by Sex

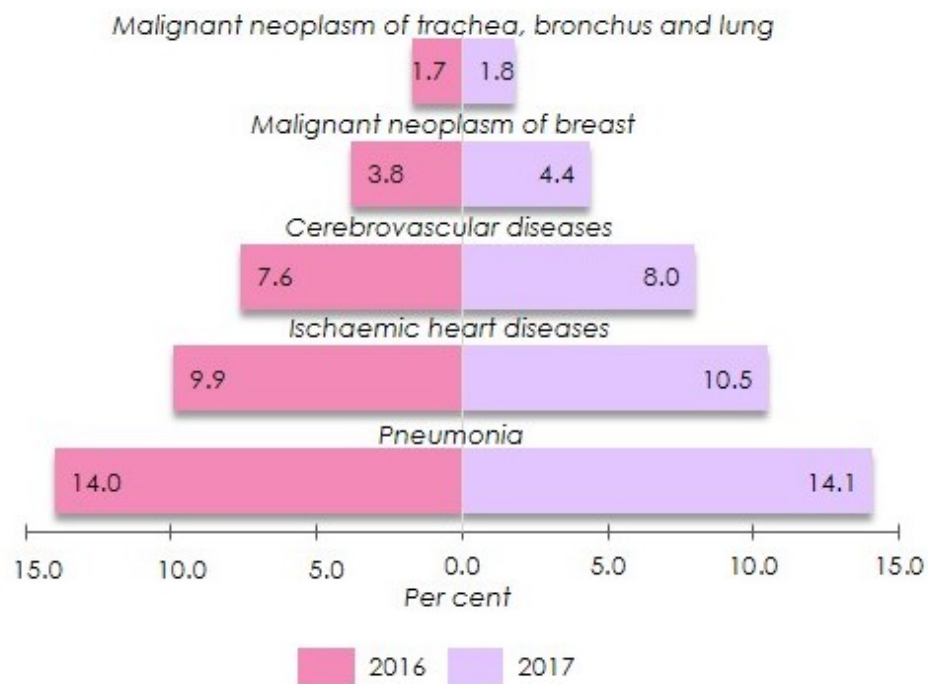
#### • The five principal causes of death for males unchanged

Ischaemic heart diseases recorded the highest percentage of 16.0 per cent, followed by Pneumonia (11.8%), Transport accidents (6.5%), Cerebrovascular diseases (6.4%) and Malignant neoplasm of trachea, bronchus & lung (2.7%).



#### • Malignant neoplasm of breast recorded the highest change in percentage points for female

Malignant neoplasm of breast for female recorded the highest changes of 0.6 percentage points from 3.8 per cent (2016) to 4.4 per cent (2017).



### iii. Causes of Death by Stratum

**Ischaemic heart diseases and pneumonia are the principal causes of death by stratum**

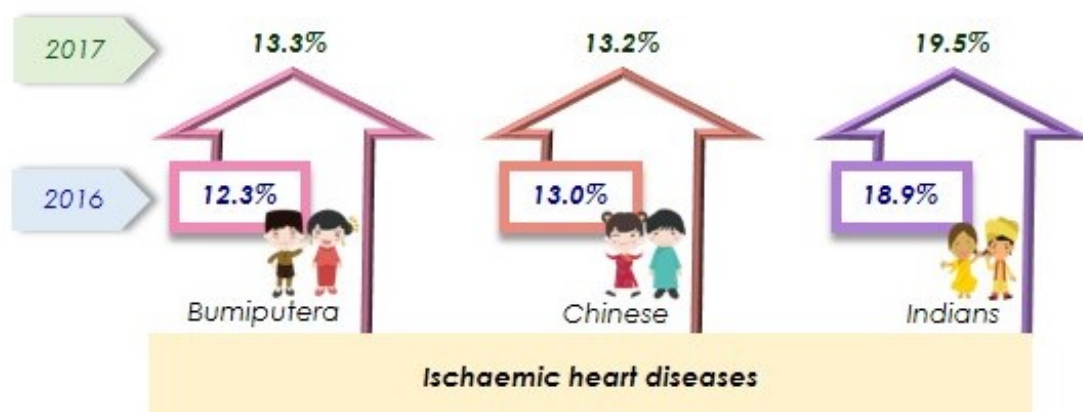
The principal causes of death in urban areas was Ischaemic heart diseases (14.4%) while Pneumonia (13.4%) was the principal causes of death in rural areas.



#### iv. Causes of Death by Major Ethnic Group

**Ischaemic heart diseases is the principal causes of death for all major ethnic groups**

Bumiputera recorded the highest increase of 1.0 percentage point from 12.3 per cent (2016) to 13.3 per cent (2017).

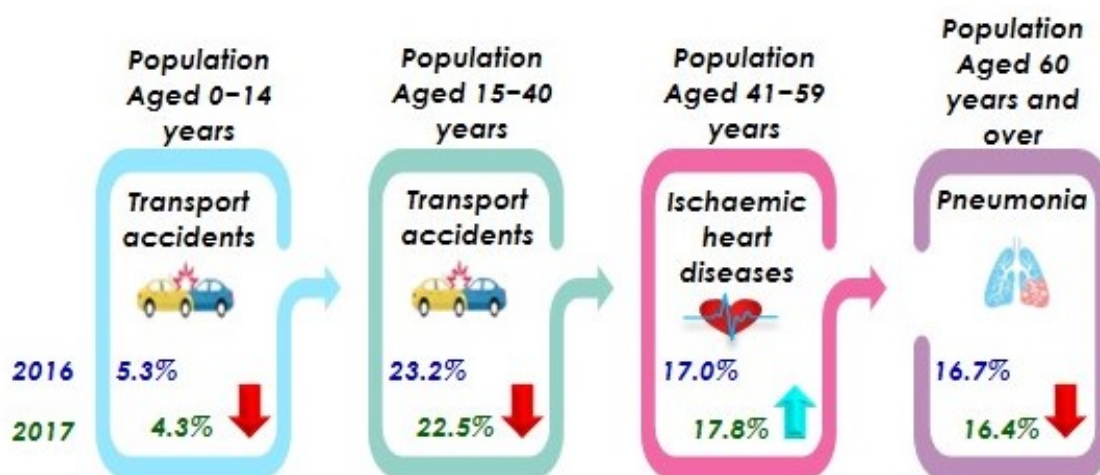


#### v. Causes of Death by Selected Age group

- Population aged 15 - 40 years

**Transport accidents was the principal causes of death for the youth**

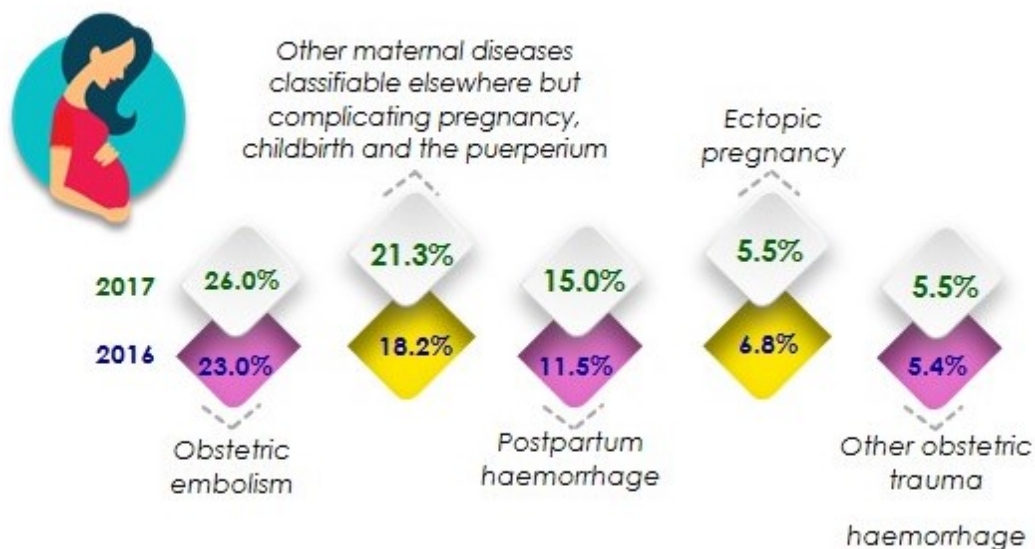
Transport accidents was the principal causes of death for population aged 15–40 years in 2017. The percentage of deaths caused by Transport accidents in 2017 was 22.5 per cent, declined 0.7 percentage points as compared to 2016.



## vi. Principal Causes of Maternal Death

### Obstetric embolism remains the principal causes of maternal death

Obstetric embolism was the main principal causes of death for maternal death. In 2017, the percentage of deaths caused by Obstetric embolism were 26.0 per cent.



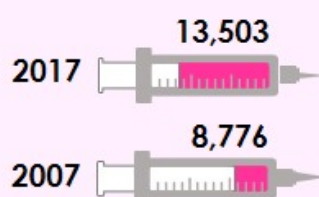
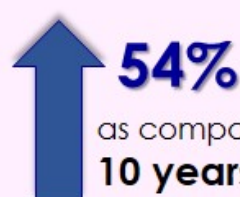




# ISCHAEMIC HEART DISEASES 2017

remained as principal causes of death

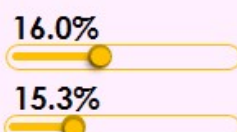
## Causes of death due to Ischaemic heart diseases has increased



**37** deaths per day  
due to Ischaemic heart  
diseases as compared  
to 24 deaths in 2007

## Highest percentage increase for causes of death

### Male



### Ischaemic heart diseases

increased **0.7** percentage  
points as compared to 2016

### Female

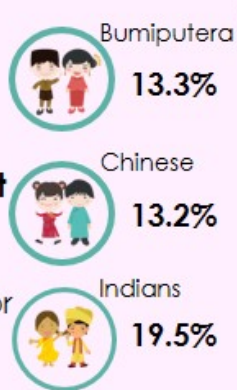


### Malignant neoplasm of breast

increased **0.6** percentage  
points as compared to 2016



**Ischaemic heart diseases**  
is the principal  
causes of death for  
major ethnic  
groups



**Transport accidents**  
is the principal  
causes of death for  
the youth  
(15-40 years)



**22.5%**



**26.0%**  
**Obstetric embolism**  
is the principal  
causes of maternal  
death

Note: The analysis is based on medically certified causes of death

Source: Statistics on Causes of Death, Malaysia, 2018

**Released By:**

**DATO' SRI DR. MOHD UZIR MAHIDIN  
CHIEF STATISTICIAN MALAYSIA  
DEPARTMENT OF STATISTICS, MALAYSIA**

**#myHariBulan# #myBulan# #myTahun#**

**Contact person:**

Ho Mei Kei  
Public Relation Officer  
Strategic Communication and International Division  
Department of Statistics, Malaysia  
Tel : +603-8885 7942  
Fax : +603-8888 9248  
Email : mkho[at]dosm.gov.my

**Contact person:**

Baharudin Mohamad  
Public Relation Officer  
Strategic Communication and International Division  
Department of Statistics Malaysia  
Tel : +603-8090 4681  
Fax : +603-8888 9248  
Email : baharudin[at]dosm.gov.my

**Copyright ©2026 Department of Statistics Malaysia Official Portal. All Rights Reserved.**