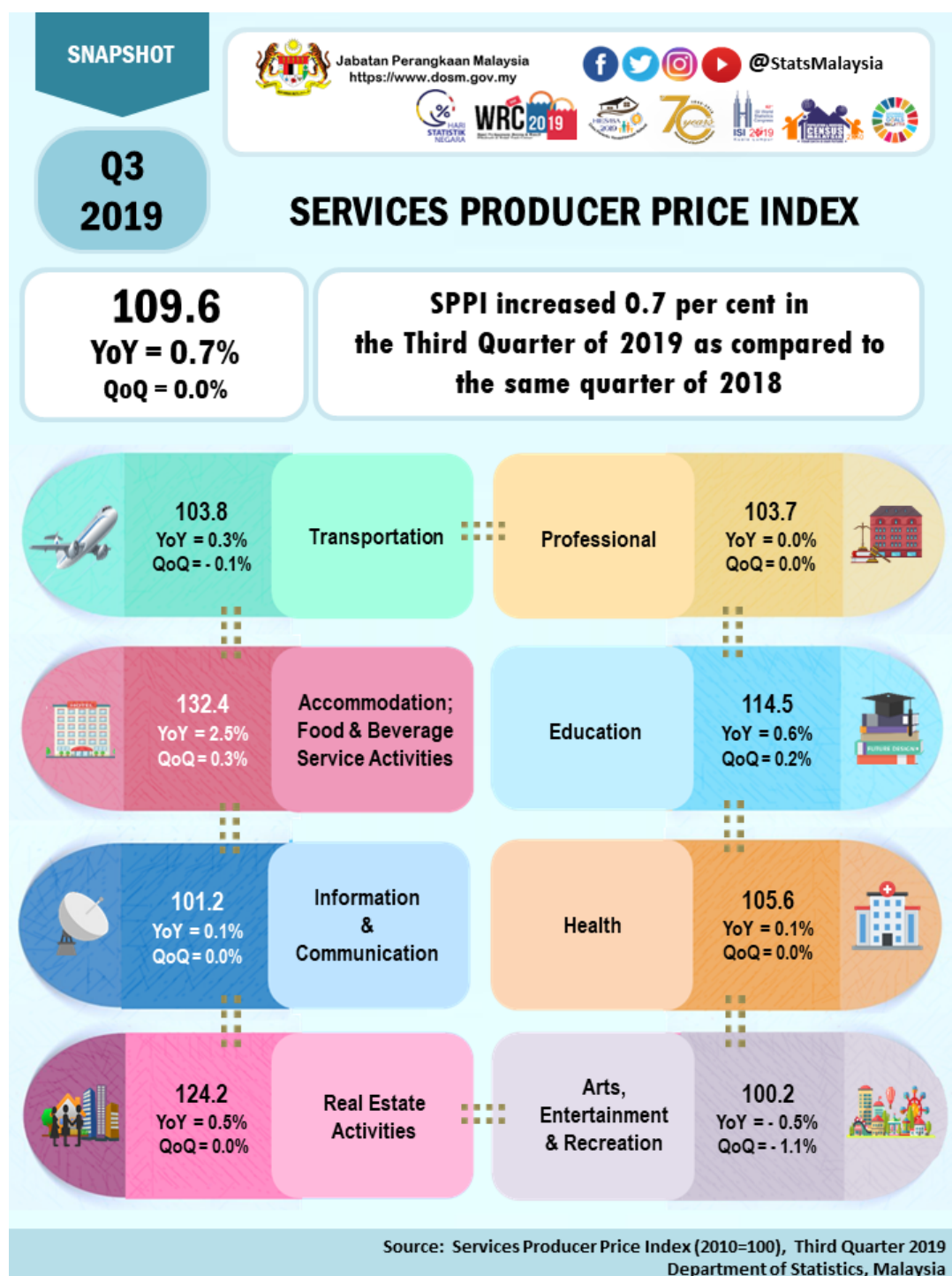




## SERVICES PRODUCER PRICE INDEX, THIRD QUARTER OF 2019



## SERVICES PRODUCER PRICE INDEX (2010=100)

### THIRD QUARTER 2019

The Services Producer Price Index (SPPI) for the third quarter of 2019 increased 0.7 per cent to 109.6 as compared to 108.9 in the same quarter of the preceding year. The main sub-sectors that contributed to the increase were Accommodation; Food & Beverage Service Activities (2.5%), Education (0.6%), Real Estate Activities (0.5%), Transportation (0.3%), Health (0.1%) and Information & Communication (0.1%) indices. The index for Arts, Entertainment & Recreation decreased 0.5 per cent while the Professional sub-sector was unchanged.

For quarterly comparisons, the index for the third quarter 2019 was unchanged. However, the index increased for Accommodation; Food & Beverage Service Activities (0.3%) and Education (0.2%). On the other hand, the index for Arts, Entertainment & Recreation decreased 1.1 per cent, followed by Transportation (-0.1%) index. Meanwhile, Real Estate Activities, Information & Communication, Health and Professional indices was unchanged.

**Table 1: Services Producer Price Index (2010=100), Third Quarter 2019**

<i>Sub-sector</i>	<i>Index</i>			<i>% Change</i>	
	<i>Q3 2018</i>	<i>Q2 2019</i>	<i>Q3 2019</i>	<i>Q3 2019 / Q2 2019</i>	<i>Q3 2019 / Q3 2018</i>
<b>TOTAL</b>	<b>108.9</b>	<b>109.6</b>	<b>109.6</b>	<b>0.0</b>	<b>0.7</b>
<i>Transportation</i>	103.5	103.9	103.8	-0.1	0.3
<i>Accommodation; Food &amp; Beverage Service Activities</i>	129.2	132.0	132.4	0.3	2.5
<i>Information &amp; Communication</i>	101.1	101.2	101.2	0.0	0.1
<i>Real Estate Activities</i>	123.6	124.2	124.2	0.0	0.5
<i>Professional</i>	103.7	103.7	103.7	0.0	0.0
<i>Education</i>	113.8	114.3	114.5	0.2	0.6
<i>Health</i>	105.5	105.6	105.6	0.0	0.1
<i>Arts, Entertainment &amp; Recreation</i>	100.7	101.3	100.2	-1.1	-0.5

### TRANSPORTATION

The SPPI for Transportation sub-sector increased 0.3 per cent for the third quarter of 2019 as compared to the same quarter of the previous year. This increase was contributed by Postal Activities (8.1%), Sea & Coastal Water Transport (0.3%), Other Land Transport (0.1%) and Courier Activities (0.1%) indices. Meanwhile, no changes were recorded for Passenger Air Transport and Freight Air Transport indices.

On a quarterly basis, the index decreased 0.1 per cent for the third quarter of 2019 as compared to the previous quarter, which contributed by the index of Passenger Air Transport (-1.3%). However, the index rose 8.1 per cent for Postal Activities and 0.1 per cent for Courier Activities. No changes were recorded for Freight Air Transport, Other Land Transport and Sea & Coastal Water Transport indices.

## **ACCOMMODATION; FOOD & BEVERAGE SERVICE ACTIVITIES**

In the third quarter of 2019, the SPPI for Accommodation; Food & Beverage Service Activities increased 2.5 per cent on a year-on-year basis. The increase was driven by Restaurants & Mobile Food Service Activities (3.1%), Beverage Serving Activities (1.4%), Short-term Accommodation Activities (0.3%) and Event Catering & Other Food Service Activities (0.2%) indices.

Quarter-on-quarter comparison showed an increase of 0.3 per cent. This increase was contributed by Restaurants & Mobile Food Service Activities (0.4%) and Beverage Serving Activities (0.4%) indices. Meanwhile, the index for Short-term Accommodation Activities and Event Catering & Other Food Service Activities dropped 0.1 per cent respectively.

## **INFORMATION & COMMUNICATION**

Annual comparison for the third quarter of 2019 showed the SPPI for Information & Communication sub-sector increased 0.1 per cent, driven by Wireless Telecommunication Activities (0.1%) and Computer Programming, Consultancy & Related Activities (0.1%) indices.

Quarter-on-quarter comparison did not show any changes. However, the index for Computer Programming, Consultancy & Related Activities increased 0.1 per cent.

## **REAL ESTATE ACTIVITIES**

The SPPI for Real Estate Activities sub-sector increased 0.5 per cent in the third quarter of 2019 as compared to the same period of the previous year. The increase was contributed by the index of Real Estate Activities on a Fee or Contract Basis (0.5%).

Quarter-on-quarter comparison, the SPPI for this sub-sector was unchanged.

## **PROFESSIONAL**

The SPPI for Professional sub-sector showed no changes over the previous year. However, Accounting, Bookkeeping & Auditing Activities; Tax Consultancy and Architectural & Engineering Activities; Related Technical Consultancy indices increased 0.1 per cent.

On a quarterly basis, the SPPI for Professional sub-sector also remained the same. Meanwhile, the index increased by 0.1 per cent for Architectural & Engineering Activities; Related Technical Consultancy.

## **EDUCATION**

The SPPI for Education sub-sector increased 0.5 per cent in the third quarter of 2019 as compared to the same quarter of 2018. The increase was contributed by Secondary Education (3.5%), Pre-Primary & Primary Education (2.0%) and Other Education (1.0%) indices. However, the Higher Education index decreased 0.2 per cent.

Compared to the previous quarter, SPPI for Education sub-sector grew 0.2 per cent, driven by the increase in the index of Secondary Education (2.3%). Meanwhile, Pre-Primary & Primary Education, Higher Education and Other Education indices did not record any changes.

## **HEALTH**

The SPPI for Health sub-sector recorded an increase of 0.1 per cent on a year-on-year basis. The increase was contributed by the index of Hospital Activities (0.2%), followed by Medical & Dental Practice Activities (0.1%) and Other Human Health Activities (0.1%) indices.

For quarterly comparisons, the SPPI for Health sub-sector was unchanged. However, the index increased for Hospital Activities (0.1%) and Other Human Health Activities (0.1%).

## **ARTS, ENTERTAINMENT & RECREATION**

The SPPI for Arts, Entertainment & Recreation sub-sector registered a decline of 0.5 per cent for the third quarter of 2019 as compared to the same period last year. The decrease was driven by the index of Gambling & Betting Activities (-0.6%). However, the index increased for Other Amusement & Recreation Activities (0.3%) and Sports Activities (0.1%).

On a quarterly basis, the SPPI for Arts, Entertainment & Recreation sub-sector decreased 1.1 per cent, contributed by Gambling & Betting Activities (-1.3%) index. Meanwhile, Other Amusement & Recreation Activities and Sports Activities indices grew 0.1 per cent respectively.

### **Released by:**

**DATO' SRI DR. MOHD UZIR MAHIDIN**  
**CHIEF STATISTICIAN MALAYSIA**  
**DEPARTMENT OF STATISTICS, MALAYSIA**

 **DrUzir\_Mahidin**  **Dr\_Uzir** 

**#myHariBulan# #myBulan# #myTahun#**

### **Contact person:**

Rohaida binti Mohamad  
Public Relation Officer  
Strategic Communication and International Division  
Department of Statistics, Malaysia  
**Tel** : +603-8885 7942  
**Fax** : +603-8888 9248  
**Email** : rohaida.mohamad@dosm.gov.my

### **Contact person:**

Baharudin Mohamad  
Public Relation Officer  
Strategic Communication and International Division  
Department of Statistics Malaysia  
**Tel** : +603-8090 4681  
**Fax** : +603-8888 9248  
**Email** : baharudin[at]dosm.gov.my

**Copyright ©2025 Department of Statistics Malaysia Official Portal. All Rights Reserved.**