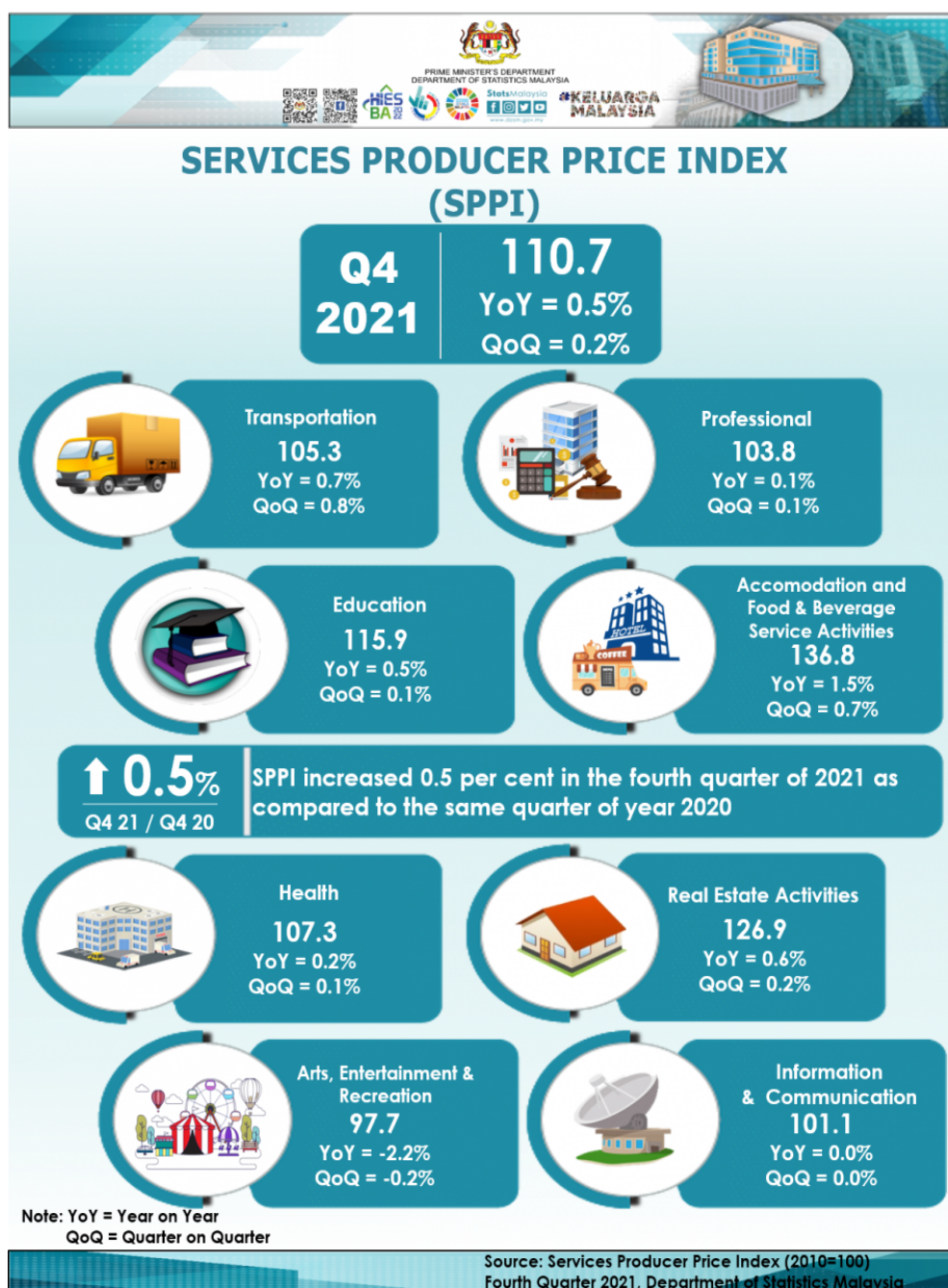




SERVICES PRODUCER PRICE INDEX, FOURTH QUARTER OF 2021



SERVICES PRODUCER PRICE INDEX (2010=100)

FOURTH QUARTER 2021

The Services Producer Price Index (SPPI) for the fourth quarter of 2021 increased 0.5 per cent to 110.7 as compared to 110.1 in the same quarter of the preceding year. The main sub-sectors that showed increases were Accommodation and Food & Beverage Service Activities (1.5%), Transportation (0.7%), Real Estate Activities (0.6%), Education (0.5%), Health (0.2%) and Professional (0.1%). However, the index for Arts, Entertainment & Recreation showed a decrease of 0.2 per cent. Index for Information & Communication remained unchanged.

As quarter-on-quarter comparison, the SPPI rose by 0.2 per cent. This was driven by Transportation (0.8%),

Accommodation and Food & Beverage Service Activities (0.7%), Real Estate Activities (0.2%). Meanwhile, Professional, Education and Health sub-sectors were recorded an increase of 0.1 per cent respectively. The index for Arts, Entertainment & Recreation decreased by 2.2 per cent while subsector Information & Communication remained unchanged.

Overall, for the year 2021, SPPI increased by 0.3 per cent as compared to 0.5 per cent recorded in 2020.

Table 1: Services Producer Price Index (2010=100), Fourth Quarter 2021

| Subsector | Index | | | Percentage Change % | |
|---|--------------|--------------|--------------|---------------------|---------------------|
| | Q4 2020 | Q3 2021 | Q4 2021 | Q4 2021/ Q3 2021 | Q4 2021/ Q4 2020 |
| TOTAL | 110.1 | 110.5 | 110.7 | 0.2 | 0.5 |
| Transportation | 104.6 | 104.5 | 105.3 | 0.8 | 0.7 |
| Accommodation and Food & Beverage Service Activities | 134.8 | 135.9 | 136.8 | 0.7 | 1.5 |
| Information & Communication | 101.1 | 101.1 | 101.1 | 0.0 | 0.0 |
| Real Estate Activities | 126.1 | 126.6 | 126.9 | 0.2 | 0.6 |
| Professional | 103.7 | 103.7 | 103.8 | 0.1 | 0.1 |
| Education | 115.3 | 115.8 | 115.9 | 0.1 | 0.5 |
| Health | 107.1 | 107.2 | 107.3 | 0.1 | 0.2 |
| Arts, Entertainment & Recreation | 97.9 | 99.9 | 97.7 | -2.2 | -0.2 |

TRANSPORTATION

The Transport sub-sector increased by 0.7 per cent in the fourth quarter of 2021 as compared to the same quarter of the previous year. The increase was mainly contributed by the index of Other Land Transport (1.2%), Sea & Coastal Water Transport (1.1%), Passenger Air Transport (0.8%) and Courier Activities (0.5%) whereas Freight Air Transport and Postal Activities remained unchanged.

On a quarterly basis, the transport sub-sector increased by 0.8 per cent in the fourth quarter of 2021. The increase was driven by the index of Passenger Air Transport (3.1%), Other Land Transport (0.2%), Sea & Coastal Water Transport (0.1%) and Courier Activities (0.1%). However, Freight Air Transport and Postal Activities indices remained unchanged.

ACCOMMODATION AND FOOD & BEVERAGE SERVICE ACTIVITIES

On a yearly basis, the fourth quarter of 2021 showed the Accommodation and Food & Beverage Service Activities increased 1.5 per cent. The increase was contributed by the index of Restaurants & Mobile Food Service Activities (1.8%), Beverage Serving Activities (0.8%), Short-term Accommodation Activities (0.5%) and Event Catering & Other Food Service Activities (0.1%).

Simultaneously, on a quarterly comparison also recorded an increase of 0.7 per cent. This increase was contributed by Restaurants & Mobile Food Service Activities (0.8%), Beverage Serving Activities (0.4%) and (0.1%) indices. Meanwhile, the index of Short-term Accommodation Activities and Event Catering & Other Food Service remained unchanged.

INFORMATION & COMMUNICATION

Annual and quarterly comparisons data for the fourth quarter of 2021 remained unchanged for Information & Communications sub-sector. However, the Computer Programming, Consultancy & Related Activities index moved up by 0.1 per cent on annual while decreased 0.1 per cent on quarterly basis.

REAL ESTATE ACTIVITIES

The Real Estate Activities rose 0.6 per cent as compared to the previous year contributed by Real Estate Activities on a Fee or Contract Basis (0.6%). A quarter-on-quarter comparison also recorded an increase of 0.2 per cent.

PROFESSIONAL

The SPPI for Professional sub-sector increased marginally by 0.1 per cent in the fourth quarter of 2021. The increase was driven by the index of Legal Activities (0.2%) and Architectural and Engineering Activities & Related Technical Consultancy (0.1%). On a quarterly basis, Professional sub-sector also increased by 0.1 per cent driven by the index of Legal Activities (0.2%). Meanwhile other Professional indices remained unchanged.

EDUCATION

The Education sub-sector increased by 0.5 per cent in the fourth quarter of 2021. The index of Pre-Primary & Primary Education recorded the highest increase of 1.5 per cent. Meanwhile, Secondary Education, Other Education and Higher Education indices showed increases of 0.8 per cent, 0.6 per cent and 0.3 per cent respectively. In addition, the index also increased 0.1 per cent on a quarterly comparison. The Higher Education index recorded an increase of 0.2 per cent on a quarterly basis while Pre-Primary & Primary Education, Secondary Education and Other Education indices remained unchanged.

HEALTH

The SPPI for Health sub-sector registered 0.2 per cent increase as compared to fourth quarter 2020. The increase was contributed by the index of Medical & Dental Practice Activities (0.4%) and Hospital Activities (0.3%). However, Other Human Health Activities index decreased by 0.1 per cent. On a quarterly basis, the SPPI increased by 0.1 per cent. This was driven by the index of Medical & Dental Practice Activities (0.2%) and Hospital Activities (0.1%). Meanwhile, Other Human Health Activities index remained unchanged.

ARTS, ENTERTAINMENT & RECREATION

In the fourth quarter of 2021, the SPPI for Arts, Entertainment & Recreation sub-sector decreased 0.2 per cent as against fourth quarter 2020. This was driven by the index of Gambling & Betting Activities (-0.4%). However, Other Amusement & Recreation Activities and Sports Activities recorded an increase of 1.3 per cent and 0.9 per cent respectively. On a quarterly basis, the SPPI for Arts, Entertainment & Recreation sub-sector declined 2.2 per cent, driven by the index of Gambling & Betting Activities (-2.6%) while index of Sports Activities increased marginally by 0.1 per cent. The index of Other Amusement & Recreation Activities remained unchanged.

The full publication of the Services Producer Price Index, Fourth Quarter 2021 can be downloaded through [eStatistik](#) portal.

Released by:

DATO' SRI DR. MOHD UZIR MAHIDIN
CHIEF STATISTICIAN MALAYSIA
DEPARTMENT OF STATISTICS, MALAYSIA

 [DrUzir_Mahidin](#)  [Dr_Uzir](#) 

#myHariBulan# #myBulan# #myTahun#

Contact person:

Mohd Yusrizal Ab Razak
Public Relation Officer
Strategic Communication and International Division
Department of Statistics, Malaysia

Tel : +603-8885 7942

Fax : +603-8888 9248

E-mail : yusrizal.razak[at]dosm.gov.my

Contact person:

Baharudin Mohamad
Public Relation Officer
Strategic Communication and International Division
Department of Statistics Malaysia

Tel : +603-8090 4681

Fax : +603-8888 9248

Email : baharudin[at]dosm.gov.my

Copyright ©2025 Department of Statistics Malaysia Official Portal. All Rights Reserved.