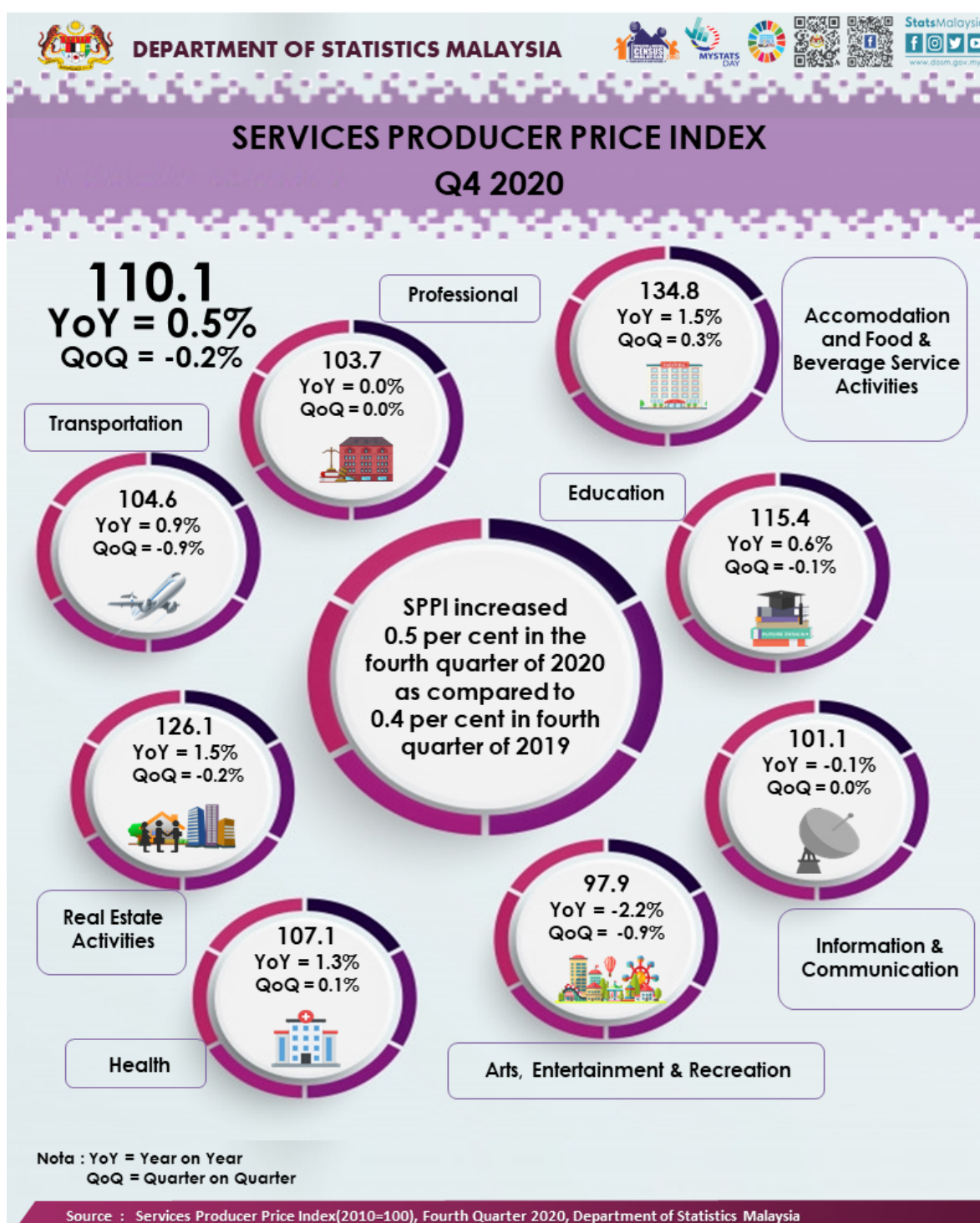




## SERVICES PRODUCER PRICE INDEX, FOURTH QUARTER OF 2020



### SERVICES PRODUCER PRICE INDEX (2010=100)

#### FOURTH QUARTER 2020

The Services Producer Price Index (SPPI) for the fourth quarter of 2020 increased 0.5 per cent to 110.1 as compared to 109.6 in the same quarter of the preceding year. The main sub-sectors that contributed to the increase were Accommodation and Food & Beverage Service Activities (1.5%), Real Estate Activities

(1.5%), Health (1.3%), Transportation (0.9%), and Education (0.6%). However, the index for Arts, Entertainment & Recreation and Information & Communication decreased by 2.2 per cent and 0.1 per cent respectively. Index for Professional remained unchanged.

On the Quarterly basis, the index declined 0.2 per cent. This was driven by the following sub-sectors: Transportation (0.9%), Arts, Entertainment & Recreation (0.9%), Real Estate Activities (0.2%) and Education (0.1%). Meanwhile, Accommodation and Food & Beverage Service Activities and Health increased by 0.3 per cent and 0.1 per cent respectively. Index for Professional and Information & Communication indices remained unchanged.

**Table 1: Services Producer Price Index (2010=100), Fourth Quarter 2020**

<b>Subsector</b>	<b>Index</b>			<b>Changes %</b>	
	<b>Q4 2019</b>	<b>Q3 2020</b>	<b>Q4 2020</b>	<b>Q4 2020/ Q3 2020</b>	<b>Q4 2020/ Q4 2019</b>
<b>TOTAL</b>	<b>109.6</b>	<b>110.3</b>	<b>110.1</b>	<b>-0.2</b>	<b>0.5</b>
<b>Transportation</b>	103.7	105.6	104.6	-0.9	0.9
<b>Accommodation and Food &amp; Beverage Service Activities</b>	132.8	134.4	134.8	0.3	1.5
<b>Information &amp; Communication</b>	101.2	101.1	101.1	0.0	-0.1
<b>Real Estate Activities</b>	124.2	126.3	126.1	-0.2	1.5
<b>Professional</b>	103.7	103.7	103.7	0.0	0.0
<b>Education</b>	114.6	115.4	115.3	-0.1	0.6
<b>Health</b>	105.7	107.0	107.1	0.1	1.3
<b>Arts, Entertainment &amp; Recreation</b>	100.1	98.8	97.9	-0.9	-2.2

## TRANSPORTATION

The SPPI for the Transport sub-sector increased 0.9 per cent in the fourth quarter of 2020 as compared to the same quarter of the previous year. This increase was contributed by Freight Air Transport (3.6%), Postal Activities (3.1%), Courier Activities (3.1%), Passenger Air Transport (1.7%), Sea & Coastal Water Transport (0.4%) and Other Land Transport (0.2%).

As for the quarterly comparison, the index declined 0.9 per cent over the previous quarter. This was driven by the index of Passenger Air Transport (3.8%) and Postal Activities (0.1%). However, the Courier Activities increased by 0.3 per cent. Meanwhile, no changes was recorded for indices of Sea & Coastal Water Transport, Freight Air Transport and Other Land Transport.

## ACCOMMODATION AND FOOD & BEVERAGE SERVICE ACTIVITIES

Annual comparison for the fourth quarter of 2020 showed the SPPI for Accommodation and Food &

Beverage Service Activities increased 1.5 per cent. The increase was driven by index of Restaurants & Mobile Food Service Activities (1.8%), Beverage Serving Activities (1.0%) and Event Catering & Other Food Service Activities (0.2%). Meanwhile, the index of Short-term Accommodation Activities decreased 0.3 per cent.

Quarter-on-quarter comparison also recorded an increase of 0.3 per cent. This increase was contributed by Restaurants & Mobile Food Service Activities (0.4%) and Beverage Serving Activities (0.2%). Meanwhile, the index for Event Catering & Other Food Service Activities declined 0.1 per cent. Index of Short-term Accommodation Activities remained unchanged.

## **INFORMATION & COMMUNICATION**

The SPPI for Information & Communication sub-sector registered a decrease of 0.1 per cent in the fourth quarter of 2020 as compared to the same period last year. This was due to the decline in the Wireless Telecommunication Activities (0.2%). However, the Computer Programming, Consultancy & Related Activities index showed an increase of 0.1 per cent. Quarter-on-quarter comparisons, the index remained unchanged.

## **PROFESSIONAL AND REAL ESTATE ACTIVITIES**

Annual and quarterly comparison for the fourth quarter of 2020 showed that there were no changes for Professional sub-sector. Meanwhile, the SPPI for Real Estate Activities rose 1.5 per cent as compared to the previous year contributed by index of Real Estate Activities on a Fee or Contract Basis (1.5%). Quarter-on-quarter comparison, the SPPI for Real Estate Activities declined 0.2 per cent supported by Real Estate Activities on a Fee or Contract Basis (0.2%).

## **EDUCATION**

The SPPI for Education sub-sector increased 0.6 per cent in the fourth quarter of 2020 as compared to the same quarter of 2019. The increase was contributed by Secondary Education (3.4%), Higher Education (0.4%) and Pre-Primary & Primary Education (0.2%). The Other Education indices did not record any changes.

As compared to the previous quarter, SPPI for Education sub-sector declined 0.1 per cent in the fourth quarter 2020. This was driven by Higher Education (0.1%). Meanwhile, Secondary Education, Pre-Primary & Primary Education and Other Education indices remained unchanged.

## **HEALTH**

The SPPI for Health sub-sector registered 1.3 per cent increase year-on-year. The increase was contributed by the index of Hospital Activities (1.5%) and Medical & Dental Practice Activities (1.2%). However, Other Human Health Activities decreased 0.3 per cent.

On a quarterly basis, the SPPI for this sub-sector recorded an increase of 0.1 per cent. Nevertheless, Other Human Health Activities declined 0.1 per cent. The index for the Hospital Activities and Medical & Dental Practice Activities remained unchanged.

## **ARTS, ENTERTAINMENT & RECREATION**

In the fourth quarter of 2020, the SPPI for Arts, Entertainment & Recreation sub-sector declined 2.2 per cent for year-on-year. This was due to the Index of Gambling & Betting Activities (2.7%) and Other Amusement & Recreation Activities (0.3%). However, the index for Sports Activities increased 0.4 per cent. On a quarterly basis, the SPPI for Arts, Entertainment & Recreation sub-sector also declined 0.9 per cent, driven by Gambling & Betting Activities (1.2%) and Other Amusement & Recreation Activities (0.2%).

The full publication of the Services Producer Price Index, Fourth Quarter 2020 can be downloaded through [eStatistik](#) portal.

**Released by:**

**DATO' SRI DR. MOHD UZIR MAHIDIN**  
**CHIEF STATISTICIAN MALAYSIA**  
**DEPARTMENT OF STATISTICS, MALAYSIA**

 [DrUzir\\_Mahidin](#)   [Dr\\_Uzir](#)

**05 FEBRUARY 2021**

**Contact person:**

Mohd Yusrizal Ab Razak  
Public Relation Officer  
Strategic Communication and International Division  
Department of Statistics, Malaysia

**Tel :** +603-8885 7942

**Fax :** +603-8888 9248

**E-mail :** [yusrizal.razak\[at\]dosm.gov.my](mailto:yusrizal.razak[at]dosm.gov.my)

**Contact person:**

Baharudin Mohamad  
Public Relation Officer  
Strategic Communication and International Division  
Department of Statistics Malaysia

**Tel :** +603-8090 4681

**Fax :** +603-8888 9248

**Email :** [baharudin\[at\]dosm.gov.my](mailto:baharudin[at]dosm.gov.my)

**Copyright ©2025 Department of Statistics Malaysia Official Portal. All Rights Reserved.**