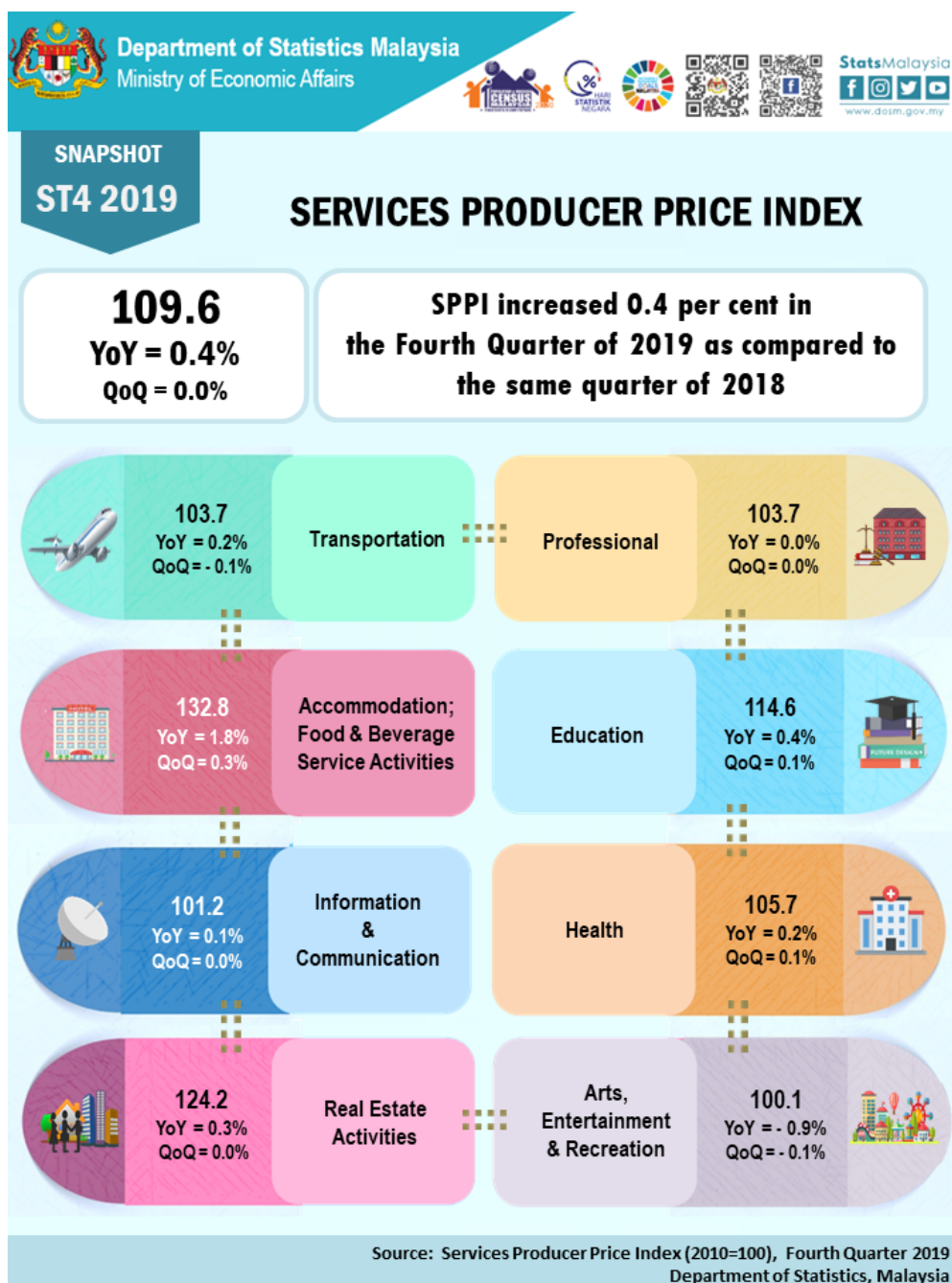




SERVICES PRODUCER PRICE INDEX, FOURTH QUARTER OF 2019



SERVICES PRODUCER PRICE INDEX (2010=100)

FOURTH QUARTER 2019

The Services Producer Price Index (SPPI) for the fourth quarter of 2019 increased 0.4 per cent to 109.6 as compared to 109.2 in the same quarter of the preceding year. The main sub-sectors that contributed to the increase were Accommodation; Food & Beverage Service Activities (1.8%), Education (0.4%), Real Estate Activities (0.3%), Transportation (0.2%), Health (0.2%) and Information & Communication (0.1%) indices. The index for Arts, Entertainment & Recreation decreased 0.9 per cent while the Professional sub-sector was unchanged.

For quarterly comparisons, the index for the fourth quarter 2019 was unchanged. However, the index increased for Accommodation; Food & Beverage Service Activities (0.3%), Health (0.1%) and Education (0.1%). On the other hand, the index for Arts, Entertainment & Recreation and Transportation, dropped 0.1 per cent respectively. Meanwhile, Real Estate Activities, Information & Communication and Professional indices was unchanged.

Table 1: Services Producer Price Index (2010=100), Fourth Quarter 2019

Sub-sector	Index			% Change	
	Q4 2018	Q3 2019	Q4 2019	Q4 2019 / Q3 2019	Q4 2019 / Q4 2018
TOTAL	109.2	109.6	109.6	0.0	0.4
Transportation	103.5	103.8	103.7	-0.1	0.2
Accommodation; Food & Beverage Service Activities	130.5	132.4	132.8	0.3	1.8
Information & Communication	101.1	101.2	101.2	0.0	0.1
Real Estate Activities	123.8	124.2	124.2	0.0	0.3
Professional	103.7	103.7	103.7	0.0	0.0
Education	114.2	114.5	114.6	0.1	0.4
Health	105.5	105.6	105.7	0.1	0.2
Arts, Entertainment & Recreation	101.0	100.2	100.1	-0.1	-0.9

TRANSPORTATION

The SPPI for Transportation sub-sector increased 0.2 per cent for the fourth quarter of 2019 as compared to the same quarter of the previous year. This increase was contributed by Postal Activities (8.1%), Sea & Coastal Water Transport (0.6%), Courier Activities (0.4%) and Other Land Transport (0.1%) indices. Meanwhile, the index was down by 0.5 per cent for Passenger Air Transport and Freight Air Transport index remained unchanged.

On a quarterly basis, the index decreased 0.1 per cent for the fourth quarter of 2019 as compared to the previous quarter, contributed by the index of Passenger Air Transport (-0.4%). However, the index rose 0.2 per cent for Sea & Coastal Water Transport. No changes were recorded for Freight Air Transport, Other Land Transport, Postal Activities and Courier Activities indices.

ACCOMMODATION; FOOD & BEVERAGE SERVICE ACTIVITIES

In the fourth quarter of 2019, the SPPI for Accommodation; Food & Beverage Service Activities increased 1.8 per cent on a year-on-year basis. The increase was driven by Restaurants & Mobile Food Service Activities (2.3%), Beverage Serving Activities (1.3%) and Event Catering & Other Food Service Activities (0.2%) indices. While the index of Short-term Accommodation Activities was unchanged.

Quarter-on-quarter comparison showed an increase of 0.3 per cent. This increase was contributed by Restaurants & Mobile Food Service Activities (0.4%), Beverage Serving Activities (0.3%) and Event Catering & Other Food Service Activities (0.2%) indices. Meanwhile, the index for Short-term Accommodation Activities remained unchanged.

INFORMATION & COMMUNICATION

Annual comparison for the fourth quarter of 2019 showed the SPPI for Information & Communication sub-sector increased 0.1 per cent, driven by Computer Programming, Consultancy & Related Activities (0.2%) and Wireless Telecommunication Activities (0.1%) indices.

Quarter-on-quarter comparison did not show any changes for Wired Telecommunication Activities, Wireless Telecommunication Activities and Computer Programming, Consultancy & Related Activities indices.

REAL ESTATE ACTIVITIES

The SPPI for Real Estate Activities sub-sector increased 0.3 per cent in the fourth quarter of 2019 as compared to the same period of the previous year. The increase was contributed by the index of Real Estate Activities on a Fee or Contract Basis (0.3%). Quarter-on-quarter comparison, the SPPI for this sub-sector was remain unchanged.

PROFESSIONAL

The SPPI for Professional sub-sector showed no changes over the previous year. However, Accounting, Bookkeeping & Auditing Activities; Tax Consultancy and Architectural & Engineering Activities; Related Technical Consultancy indices increased 0.1 per cent and Legal Activities index decreased 0.1 per cent.

On a quarterly basis, the SPPI for Professional sub-sector also remained the same. Meanwhile, the index decreased by 0.1 per cent for Legal Activities. The index for Architectural & Engineering Activities; Related Technical Consultancy and Accounting, Bookkeeping & Auditing Activities; Tax Consultancy was unchanged.

EDUCATION

The SPPI for Education sub-sector increased 0.4 per cent in the fourth quarter of 2019 as compared to the same quarter of 2018. The increase was contributed by Secondary Education (3.5%), Pre-Primary & Primary Education (2.0%) and Other Education (1.0%) indices. However, the Higher Education index decreased 0.6 per cent.

Compared to the previous quarter, SPPI for Education sub-sector grew 0.1 per cent. Meanwhile, Secondary Education, Pre-Primary & Primary Education, Higher Education and Other Education indices did not record any changes.

HEALTH

The SPPI for Health sub-sector recorded an increase of 0.2 per cent on a year-on-year basis. The increase was contributed by the index of Hospital Activities (0.2%), followed by Medical & Dental Practice Activities (0.1%) and Other Human Health Activities (0.1%) indices.

For quarterly comparisons, the SPPI for Health sub-sector increased 0.1 per cent. However, the index for Hospital Activities, Medical & Dental Practice Activities and Other Human Health Activities was unchanged.

ARTS, ENTERTAINMENT & RECREATION

The SPPI for Arts, Entertainment & Recreation sub-sector registered declined 0.9 per cent for the fourth quarter of 2019 as compared to the same period last year. The decrease was driven by the index of Gambling & Betting Activities (-1.2%). However, the index for Other Amusement & Recreation Activities (0.3%) increased and the index of Sports Activities did not show any changes.

On a quarterly basis, the SPPI for Arts, Entertainment & Recreation sub-sector decreased 0.1 per cent, contributed by Gambling & Betting Activities, Other Amusement & Recreation Activities and Sports Activities indices which dropped 0.1 per cent respectively.

Released by:

DATO' SRI DR. MOHD UZIR MAHIDIN
CHIEF STATISTICIAN MALAYSIA
DEPARTMENT OF STATISTICS, MALAYSIA

 [DrUzir_Mahidin](#)  [Dr_Uzir](#) 

07th FEBRUARY 2020

Contact person:

Mohd Yusrizal Ab Razak
Public Relation Officer
Strategic Communication and International Division
Department of Statistics, Malaysia

Tel : +603-8885 7942

Fax : +603-8888 9248

Email : yusrizal.razak@dosm.gov.my

Contact person:

Baharudin Mohamad
Public Relation Officer
Strategic Communication and International Division
Department of Statistics Malaysia

Tel : +603-8090 4681

Fax : +603-8888 9248

Email : baharudin[at]dosm.gov.my

Copyright ©2025 Department of Statistics Malaysia Official Portal. All Rights Reserved.