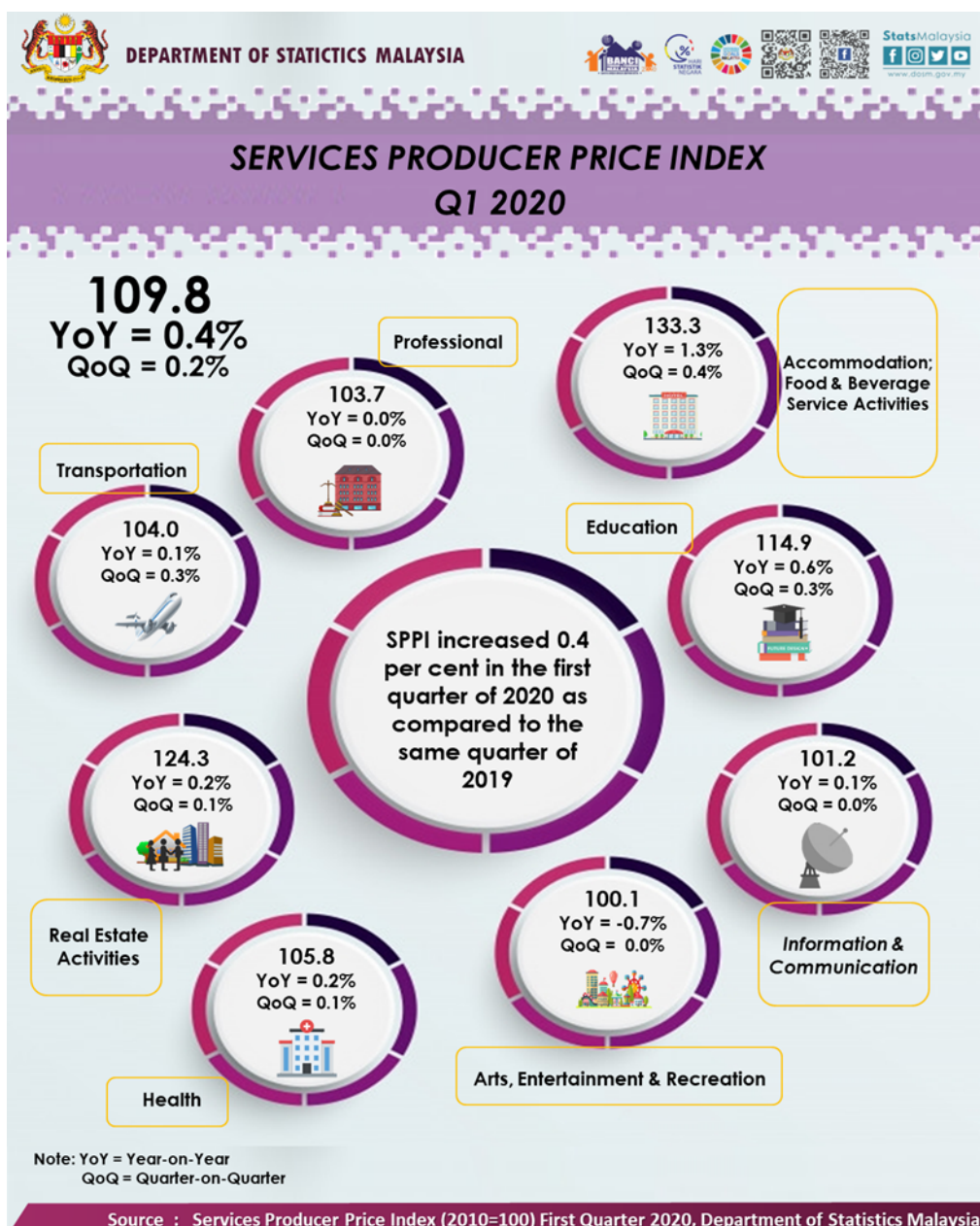




## SERVICES PRODUCER PRICE INDEX, FIRST QUARTER OF 2020



## SERVICES PRODUCER PRICE INDEX (2010=100)

### FIRST QUARTER 2020

The Services Producer Price Index (SPPI) for the first quarter of 2020 increased 0.4 per cent to 109.8 as compared to 109.4 in the same quarter of the preceding year. The main sub-sectors that contributed to the increase were Accommodation; Food & Beverage Service Activities (1.3%), Education (0.6%), Real Estate Activities (0.2%), Health (0.2%), Transport (0.1%) and Information & Communication (0.1%). The index for Arts, Entertainment & Recreation decreased 0.7 per cent while the Professional sub-sector was unchanged.

For quarterly comparisons, the index for the first quarter 2020 increased 0.2 per cent. The increase was driven by sub-sectors Accommodation; Food & Beverage Service Activities (0.4%), Transportation (0.3%), Education (0.3%), Real Estate Activities (0.1%) and Health (0.1%). Meanwhile, the index for Information & Communication, Professional and Arts, Entertainment & Recreation indices was unchanged.

**Table 1: Services Producer Price Index (2010=100), First Quarter 2020**

Subsector	Index			Changes %	
	Q1 2019	Q4 2019	Q1 2020	Q1 2020/ Q4 2019	Q1 2020 / Q1 2019
<b>TOTAL</b>	<b>109.4</b>	<b>109.6</b>	<b>109.8</b>	<b>0.2</b>	<b>0.4</b>
<b>Transportation</b>	103.9	103.7	104.0	0.3	0.1
<b>Accommodation; Food &amp; Beverage Service Activities</b>	131.6	132.8	133.3	0.4	1.3
<b>Information &amp; Communication</b>	101.1	101.2	101.2	0.0	0.1
<b>Real Estate Activities</b>	124.0	124.2	124.3	0.1	0.2
<b>Professional</b>	103.7	103.7	103.7	0.0	0.0
<b>Education</b>	114.2	114.6	114.9	0.3	0.6
<b>Health</b>	105.6	105.7	105.8	0.1	0.2
<b>Arts, Entertainment &amp; Recreation</b>	100.8	100.1	100.1	0.0	-0.7

### TRANSPORTATION

The SPPI for Transportation sub-sector increased 0.1 per cent for the first quarter of 2020 as compared to the same quarter of the previous year. Sub-sectors that showed increase in the index contributed by Postal Activities (7.7%), Courier Activities (0.5%) and Sea & Coastal Water Transport (0.3%). The Passenger Air Transport recorded a decline of 0.7 per cent. Meanwhile, the index of Other Land Transport and Freight Air Transport remain unchanged.

On a quarterly comparisons, the index for the first quarter of 2020 increased 0.3 per cent as compared to the previous quarter. It was contributed by the index of Passenger Air Transport (0.6%), Sea & Coastal Water Transport and Courier Activities by 0.4 per cent respectively. No changes were recorded for Other Land Transport, Freight Air Transport and Postal Activities indices.

## **ACCOMMODATION; FOOD & BEVERAGE SERVICE ACTIVITIES**

In the first quarter of 2020, the SPPI for Accommodation; Food & Beverage Service Activities increased 1.3 per cent on a year-on-year basis. The increase was driven by Restaurants & Mobile Food Service Activities (1.7%), Beverage Serving Activities (1.3%) and Event Catering & Other Food Service Activities (0.3%) indices. While the index of Short-term Accommodation Activities decreased 0.2 per cent.

Quarter-on-quarter comparison showed an increase of 0.4 per cent. This increase was contributed by Restaurants & Mobile Food Service Activities (0.4%), Beverage Serving Activities (0.4%) and Event Catering & Other Food Service Activities (0.2%) indices. Meanwhile, the index for Short-term Accommodation Activities decreased 0.1 per cent.

## **INFORMATION & COMMUNICATION**

Annual comparison for the first quarter of 2020 showed the SPPI for Information & Communication sub-sector increased 0.1 per cent. It was driven by an increase in the Wireless Telecommunication Activities (0.2%) and Computer Programming, Consultancy & Related Activities (0.1%) indices.

Quarter-on-quarter comparison did not show any changes for Wired Telecommunication Activities, Wireless Telecommunication Activities and Computer Programming, Consultancy & Related Activities indices.

## **REAL ESTATE ACTIVITIES**

The SPPI for Real Estate Activities sub-sector increased 0.2 per cent in the first quarter of 2020 as compared to the same period of the previous year. The increase was contributed by the index of Real Estate Activities on a Fee or Contract Basis (0.2%). On quarterly basis, the SPPI for this sub-sector recorded a 0.1 per cent increase supported by Real Estate Activities on a Fee or Contract Basis (0.1%).

## **PROFESSIONAL**

The SPPI of the Professional sub-sector showed no changes over the previous year. However, the Architectural & Engineering Activities; Related Technical Consultancy index increased 0.1 per cent and Legal Activities index decreased 0.1 per cent. Meanwhile Accounting, Bookkeeping & Auditing Activities; Tax Consultancy remained the same. On a quarterly basis, the SPPI for Professional sub-sector also remain unchanged.

## **EDUCATION**

The SPPI for Education sub-sector increased 0.6 per cent in the first quarter of 2020 as compared to the same quarter of 2019. The increase was contributed by Secondary Education (4.7%), Pre-Primary & Primary Education (0.2%) and Higher Education (1.0%) indices. The Other Education indices did not record any changes.

As compared to the previous quarter, SPPI for Education sub-sector grew 0.3 per cent, driven by Secondary Education (2.4%) and Pre-Primary & Primary Education (0.2%). Meanwhile Higher Education and Other Education indices remain unchanged.

## **HEALTH**

The SPPI for Health sub-sector recorded an increase of 0.2 per cent on a year-on-year basis. The increased was contributed by the index of Hospital Activities (0.3%), Other Human Health Activities (0.2%) and Medical & Dental Practice Activities (0.1%).

As for quarterly comparisons, the SPPI for Health sub-sector increase 0.1 per cent was contributed by index Hospital Activities (0.2%), Other Human Health Activities and Medical & Dental Practice Activities 0.1 per cent respectively.

## **ARTS, ENTERTAINMENT & RECREATION**

The SPPI for Arts, Entertainment & Recreation sub-sector registered a decline of 0.7 per cent for the first quarter of 2020 as compared to the same period last year. The decrease was driven by he index of Gambling & Betting Activities (-0.8%). However, the index increased for Other Amusement & Recreation Activities (0.4%) and Sports Activities (0.1%).

On a quarterly basis, the SPPI for Arts, Entertainment & Recreation sub-sector remain unchanged. However, there was an increase by Other Amusement & Recreation Activities (0.2%). Gambling & Betting Activities, and Sports Activities indices remain unchanged.

**Released by:**

**DATO' SRI DR. MOHD UZIR MAHIDIN**  
**CHIEF STATISTICIAN MALAYSIA**  
**DEPARTMENT OF STATISTICS, MALAYSIA**

 **DrUzir\_Mahidin**   **Dr\_Uzir**

**08th MAY 2020**

**Contact person:**

Mohd Yusrizal Ab Razak  
Public Relation Officer  
Strategic Communication and International Division  
Department of Statistics, Malaysia  
**Tel** : +603-8885 7942  
**Fax** : +603-8888 9248  
**E-mail** : yusrizal.razak@dosm.gov.my

**Contact person:**

Baharudin Mohamad  
Public Relation Officer  
Strategic Communication and International Division  
Department of Statistics Malaysia  
**Tel** : +603-8090 4681  
**Fax** : +603-8888 9248  
**Email** : baharudin[at]dosm.gov.my

**Copyright ©2026 Department of Statistics Malaysia Official Portal. All Rights Reserved.**