



---

## SELECTED AGRICULTURAL INDICATORS, MALAYSIA, 2015

---

### **Production of agriculture sector increased in 2015**

Agriculture sector continued to expand in 2015 with a contribution of 8.9 per cent to the Gross Domestic Product (GDP). Oil palm was a major contributor to the GDP of agriculture sector at 46.9 per cent followed by other agriculture (17.7%), livestock (10.7%), fishing (10.7%), rubber (7.2%) as well as forestry & logging (6.9%) in 2015.

- **Crops sub-sector**

Production of country's staple food namely paddy has increased by 473.0 thousand tonnes (16.6%) in 2015 compared to the previous year. Kenaf (dried stem), fresh fruit bunches (oil palm) and natural rubber showed an increase in production by 4.0 thousand tonnes (52.6%), 2,277.3 thousand tonnes (2.4%) and 53.5 thousand tonnes (8.0%) respectively in 2015. Planted area of paddy was 730.0 thousand hectares, increased 7.0 per cent compared to 679.2 thousand hectares recorded in the previous year.

- **Livestock sub-sector**

Number of chicken increased by 6.9 percent to 308.1 million chickens. Numbers of cattle, goat, buffalo and duck also showed an increase compared to the previous year except for sheep and swine. Production of poultry meat, chicken/duck egg and cattle milk increased in 2015 wherein chicken/duck egg recorded the highest increase of 6.5 per cent.

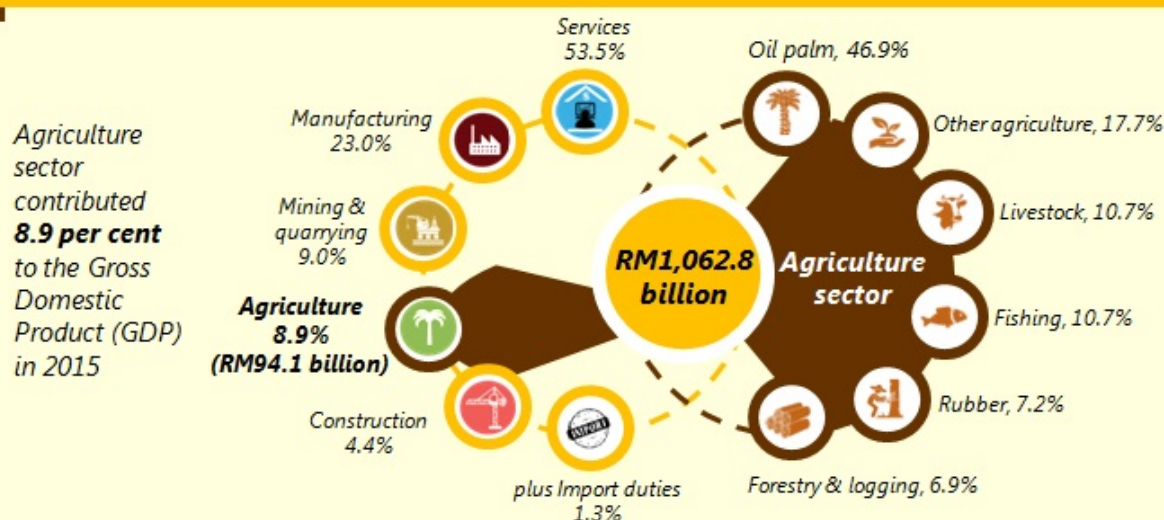
- **Fisheries sub-sector**

Total marine fish landings was 1,486.1 thousand tonnes, increased by 1.9 per cent compared to 1,458.1 thousand tonnes in 2014, while production of freshwater aquaculture increased by 5.1 percent to 112.1 thousand tonnes. On the contrary, brackishwater aquaculture production decreased by 4.7 percent to 394.3 thousand tonnes compared to the previous year.

Number of employed persons in the agriculture sector was 1,753.9 thousand persons, increased by 3.5 per cent and the number of non-citizens employed persons in the agriculture sector was 646.4 thousand persons with an increase of 16.2 per cent compared to the previous year.

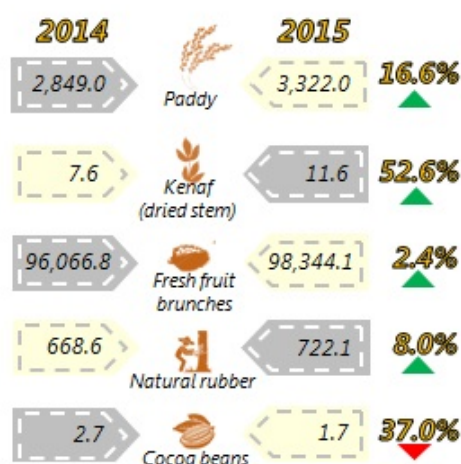
The comprehensive statistics can be obtained from the publication of Selected Agricultural Indicators, Malaysia, 2016.

## PERCENTAGE SHARE TO GDP BY KIND OF ECONOMIC ACTIVITY, 2015 (CONSTANT 2010 PRICES)



## PRODUCTION BY SUB-SECTOR

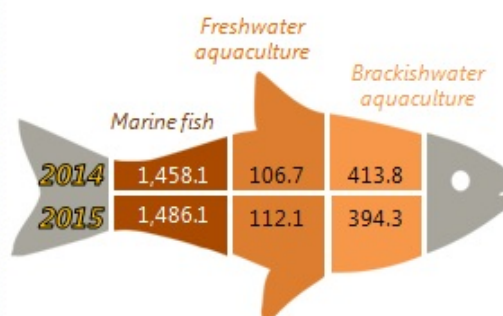
### Selected crops ('000 tonnes)



Fresh fruit bunches recorded the highest production compared to other selected crops in 2015

Source: Booklet of Crops Statistics 2016 (Food Crops Sub-sector) - Department of Agriculture, Malaysian Palm Oil Board, Malaysian Cocoa Board, Malaysian Pepper Board and National Kenaf & Tobacco Board

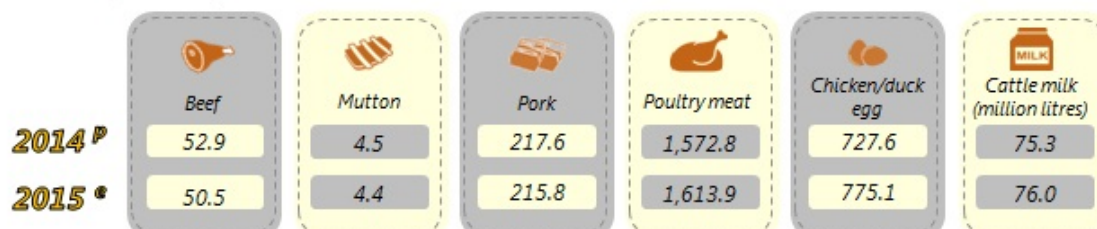
### Marine fish landings, production of freshwater and brackishwater aquaculture ('000 tonnes)



Marine fish landings was high compared to production of freshwater and brackishwater aquaculture in 2015

Source: Department of Fisheries, Malaysia

### Livestock products ('000 tonnes)



Production of chicken/duck egg recorded the highest increase compared to other livestock products by 6.5 per cent

Source: Department of Veterinary Services

Source: Selected Agriculture Indicators, Malaysia, 2016, Department of Statistics, Malaysia



## EMPLOYMENT IN THE AGRICULTURE SECTOR

**Male**  
75.7%



**Female**  
24.3%



Employment in the agriculture sector dominated by male more than 70%

**2014**



556.5

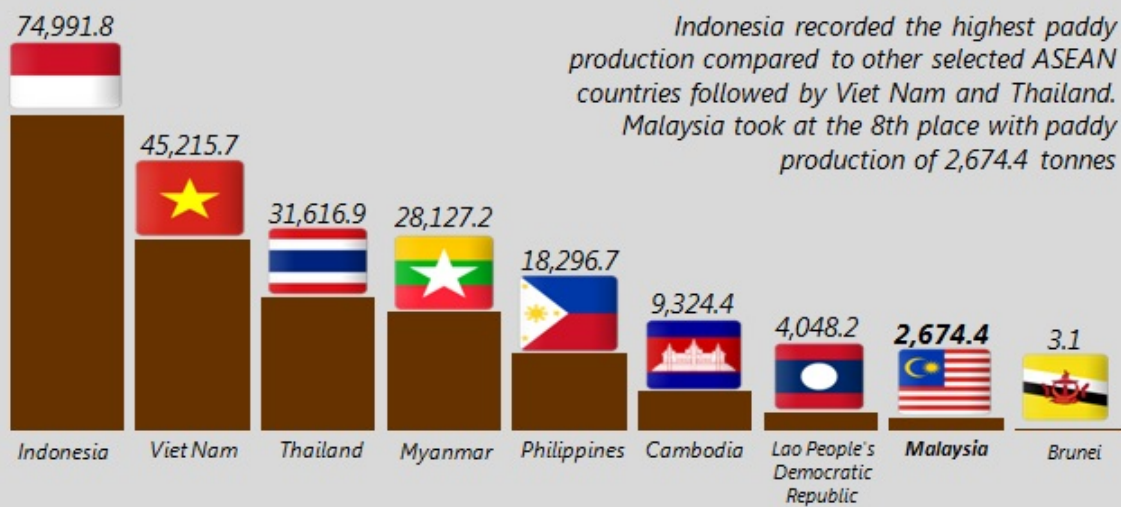
**2015** ('000 person)



646.4

In 2015, number of non-citizens employed persons in the agriculture sector was 646.4 thousand persons, increased 16.2 per cent compared to 2014

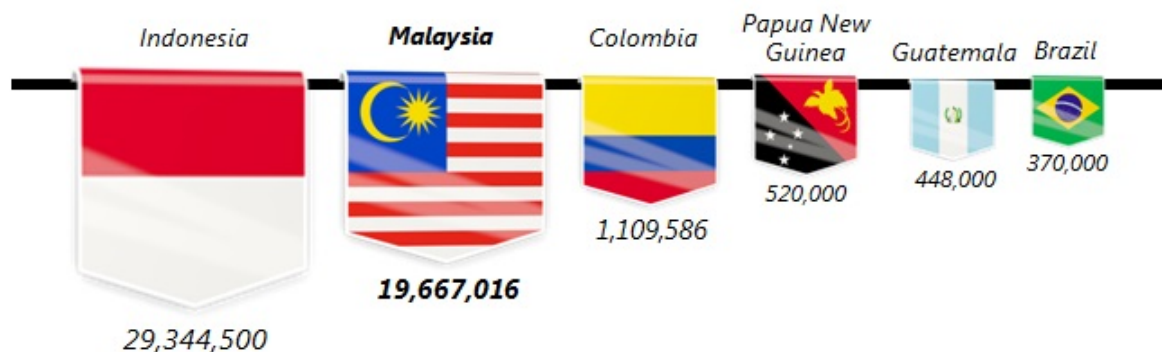
## PADDY PRODUCTION FOR SELECTED ASEAN COUNTRIES, 2015 ('000 tonnes)



Indonesia recorded the highest paddy production compared to other selected ASEAN countries followed by Viet Nam and Thailand. Malaysia took at the 8th place with paddy production of 2,674.4 tonnes

Source: ASEAN Food Security Information System (AFSIS)

## TOP SIX COUNTRIES OF PALM OIL PRODUCER, WORLD, 2014 (tonnes)



Malaysia's palm oil production took at the second place after Indonesia

Source: FAOSTAT

**Released By:**

**THE OFFICE OF CHIEF STATISTICIAN MALAYSIA**

**DEPARTMENT OF STATISTICS, MALAYSIA**

**#myHariBulan# #myBulan# #myTahun#**

**Contact person:**

Ho Mei Kei

Public Relation Officer

Corporate and User Services Division

Department of Statistics, Malaysia

**Tel** : +603-8885 7942

**Fax** : +603-8888 9248

**Email** : mkho[at]stats.gov.my

**Contact person:**

Baharudin Mohamad

Public Relation Officer

Strategic Communication and International Division

Department of Statistics Malaysia

Tel : +603-8090 4681

Fax : +603-8888 9248

Email : baharudin[at]dosm.gov.my

**Copyright ©2026 Department of Statistics Malaysia Official Portal. All Rights Reserved.**