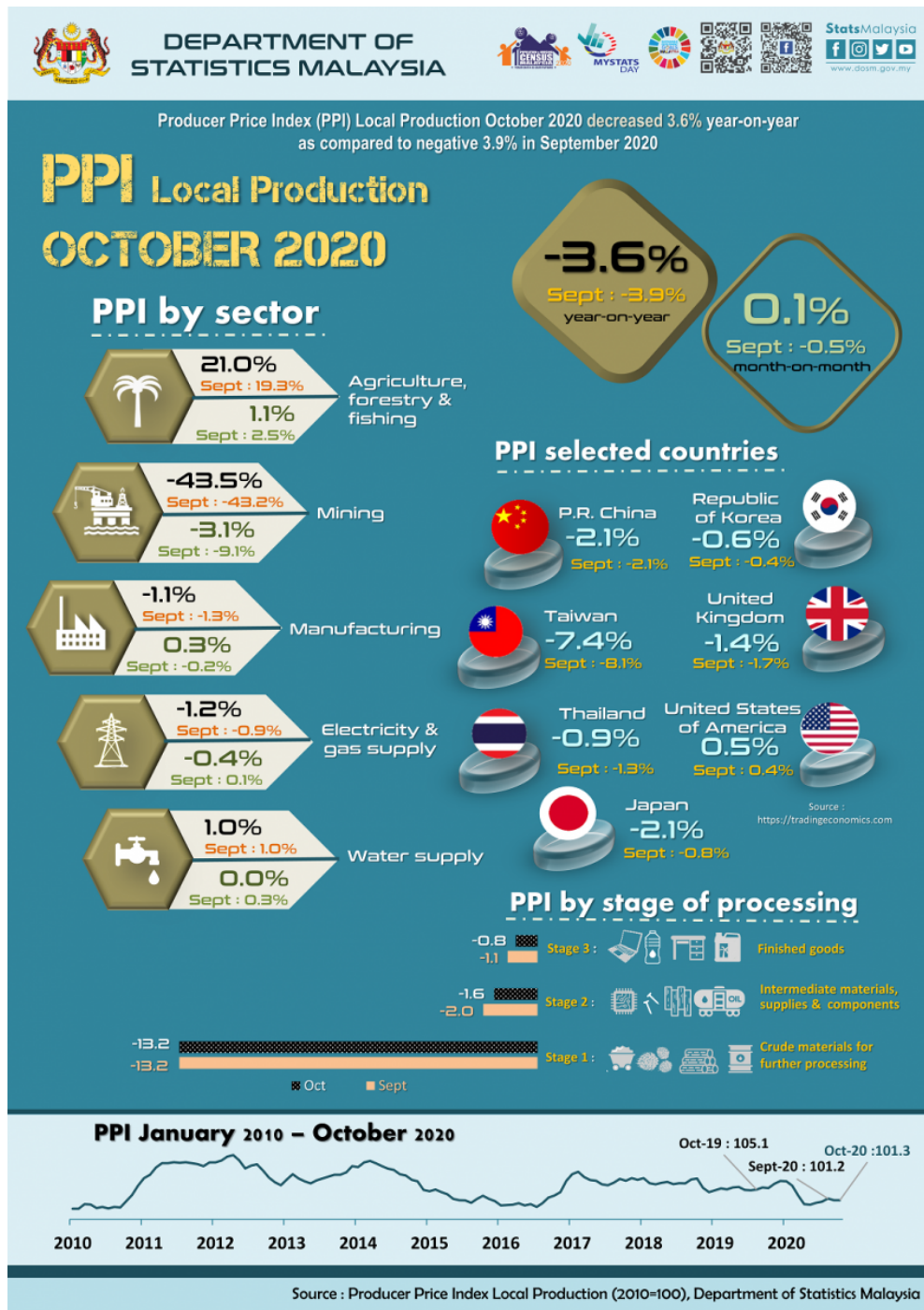




## PRODUCER PRICE INDEX MALAYSIA OCTOBER 2020



### PRODUCER PRICE INDEX (2010=100) BY SECTOR (MSIC 2008)

The Producer Price Index (PPI) local production decreased 3.6 per cent in October 2020 to 101.3 as against 105.1 in the same month of the preceding year. The decrease in the overall index was driven by the index of Mining (-43.5%), Electricity & gas supply (-1.2%), and Manufacturing (-1.1%). In contrast, the index of Agriculture, forestry & fishing and Water supply increased 21.0 per cent and 1.0 per cent respectively.

On a monthly basis, the PPI local production registered a marginal increase of 0.1 per cent in October

2020. The marginal increase was attributed by the incline in the index of Agriculture, forestry & fishing 1.1 per cent and Manufacturing 0.3 per cent. Meanwhile, the index of Mining and Electricity & gas supply slipped to negative 3.1 per cent and 0.4 per cent respectively. Water supply remained unchanged. PPI local production for the period of January to October 2020 decreased 2.7 per cent as compared to negative 2.6 per cent in the same period of the previous year.

**Table 1 : Producer Price Index (2010=100) Local Production by Sector (MSIC 2008), Malaysia**

			Index	Percentage Change					
				Year-on-Year			Month-on-Month		
Sector	Code	Weight	Oct 2020	Aug 2020/ Aug 2019	Sept 2020/ Sept 2019	Oct 2020/ Oct 2019	Aug 2020/ Jul 2020	Sept 2020/ Aug 2020	Oct 2020/ Sept 2020
<b>Total</b>		<b>100.000</b>	<b>101.3</b>	<b>-2.8</b>	<b>-3.9</b>	<b>-3.6</b>	<b>1.0</b>	<b>-0.5</b>	<b>0.1</b>
Agriculture, forestry & fishing	A	6.730	114.8	15.6	19.3	21.0	6.0	2.5	1.1
Mining	B	7.927	56.8	-33.7	-43.2	-43.5	3.0	-9.1	-3.1
Manufacturing	C	81.571	104.9	-0.9	-1.3	-1.1	0.5	-0.2	0.3
Electricity & gas supply	D	3.442	115.9	-1.9	-0.9	-1.2	-0.2	0.1	-0.4
Water supply	E	0.330	112.7	0.7	1.0	1.0	1.5	0.3	0.0

## PRODUCER PRICE INDEX BY STAGE OF PROCESSING

As compared to the same month a year ago, all stages of processing decreased. Crude materials for further processing slipped by 13.2 per cent followed by Intermediate materials, supplies & components 1.6 per cent and Finished goods 0.8 per cent.

On a monthly comparison, Crude materials for further processing showed a decline of 1.7 per cent. However, Intermediate materials, supplies & components index rose 0.8 per cent and Finished goods remained unchanged.

**Table 2 : Producer Price Index (2010=100) Local Production by Stage of Processing**

Stage of Processing	Code	Weight	Index						
			Oct 2020	Year-on-Year			Percentage Change		
				Aug 2020/ Aug 2019	Sept 2020/ Sept 2019	Oct 2020/ Oct 2019	Aug 2020/ Jul 2020	Sept 2020/ Aug 2020	Oct 2020/ Sept 2020
<b>Total</b>		<b>100.000</b>	<b>101.3</b>	<b>-2.8</b>	<b>-3.9</b>	<b>-3.6</b>	<b>1.0</b>	<b>-0.5</b>	<b>0.1</b>
Crude materials for further processing	1	16.410	90.6	-8.7	-13.2	-13.2	4.3	-2.0	-1.7
Intermediate materials, supplies and components	2	56.119	105.1	-2.0	-2.0	-1.6	0.3	0.1	0.8
Finished goods	3	27.471	101.0	0.0	-1.1	-0.8	0.7	-0.8	0.0

### Released by:

**DATO' SRI DR. MOHD UZIR MAHIDIN**  
**CHIEF STATISTICIAN MALAYSIA**  
**DEPARTMENT OF STATISTICS, MALAYSIA**

 DrUzir\_Mahidin   Dr\_Uzir

#myHariBulan# #myBulan# #myTahun#

### Contact person:

Mohd Yusrizal Ab Razak  
 Public Relation Officer  
 Strategic Communication and International Division  
 Department of Statistics, Malaysia  
 Tel : +603-8885 7942  
 Fax : +603-8888 9248  
 Email : yusrizal.razak[at]dosm.gov.my

### Contact person:

Baharudin Mohamad  
 Public Relation Officer

Strategic Communication and International Division  
Department of Statistics Malaysia  
Tel : +603-8090 4681  
Fax : +603-8888 9248  
Email : baharudin[at]dosm.gov.my

**Copyright ©2025 Department of Statistics Malaysia Official Portal. All Rights Reserved.**