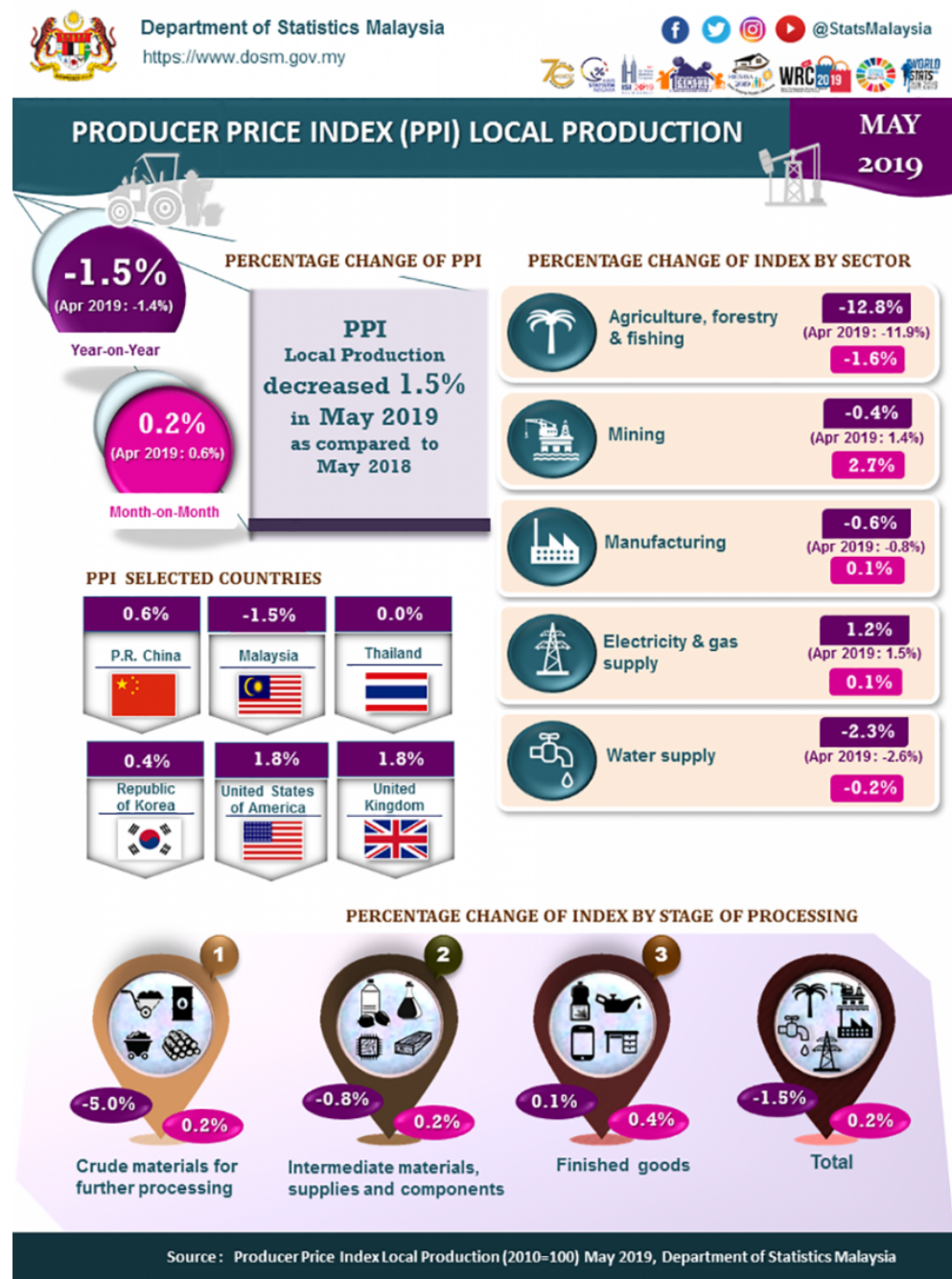




PRODUCER PRICE INDEX MALAYSIA MAY 2019



PRODUCER PRICE INDEX (2010=100) BY SECTOR (MSIC 2008)

The Producer Price Index (PPI) local production decreased 1.5 per cent in May 2019 as compared to the same month of the preceding year. The sectors which decreased during this month were Agriculture, forestry & fishing (-12.8%), Water supply (-2.3%), Manufacturing (-0.6%) and Mining (-0.4%). However, the index of Electricity & gas supply increased 1.2 per cent.

As compared to the previous month, the PPI local production rose 0.2 per cent in May 2019. The increase was contributed by index of Mining (+2.7%), Manufacturing (+0.1%) and Electricity & gas supply (+0.1%). In contrast, the index of Agriculture, forestry & fishing and Water supply dropped 1.6 per cent & 0.2 per cent respectively. PPI local production for the period of January-May 2019 registered a decrease of 1.9 per cent as compared to the same period last year.

Table I: Producer Price Index (2010=100) Local Production by Sector (MSIC 2008), Malaysia

Sector	Code	Weights	Index May 2019	Percentage Change					
				Year-on-Year			Month-on-Month		
				Mar 2019/ Mar 2018	Apr 2019/ Apr 2018	May 2019/ May 2018	Mar 2019/ Feb 2019	Apr 2019/ Mar 2019	May 2019/ Apr 2019
Total		100.000	105.5	-1.5	-1.4	-1.5	-0.3	0.6	0.2
Agriculture, forestry & fishing	A	6.730	88.9	-14.2	-11.9	-12.8	-5.8	1.0	-1.6
Mining	B	7.927	110.1	3.0	1.4	-0.4	0.5	6.9	2.7
Manufacturing	C	81.571	106.1	-0.8	-0.8	-0.6	0.1	-0.2	0.1
Electricity & gas supply	D	3.442	118.0	2.1	1.5	1.2	2.1	-0.8	0.1
Water supply	E	0.330	112.0	-1.7	-2.6	-2.3	0.2	0.1	-0.2

PRODUCER PRICE INDEX BY STAGE OF PROCESSING

In May 2019, the PPI local production by stage of processing (SOP) declined 1.5 per cent. The decreased was attributed by Crude materials for further processing (-5.0%) and Intermediate materials, supplies and components (-0.8%). Conversely, the index for Finished goods rose 0.1 per cent.

On monthly basis, the PPI local production by SOP for May 2019 increased 0.2 per cent. This was due to the index for Finished goods (+0.4%), Intermediate materials, supplies & components (+0.2%) and Crude materials for further processing (+0.2%).

Table II: Producer Price Index (2010=100), Local Production by Stage of Processing

Stage of Processing	Code	Weights	Index						
			May 2019	Year-on-Year			Percentage Change		
				Mar 2019/ Mar 2018	Apr 2019/ Apr 2018	May 2019/ May 2018	Mar 2019/ Feb 2019	Apr 2019/ Mar 2019	May 2019/ Apr 2019
Total		100.000	105.5	-1.5	-1.4	-1.5	-0.3	0.6	0.2
Crude materials for further processing	1	16.410	108.5	-3.0	-1.5	-5.0	-1.1	4.0	0.2
Intermediate materials, supplies and components	2	56.119	106.6	-1.3	-1.8	-0.8	0.1	-0.3	0.2
Finished goods	3	27.471	101.1	-0.6	0.4	0.1	-0.2	-0.3	0.4

Released By:

DATO' SRI DR. MOHD UZIR MAHIDIN
CHIEF STATISTICIAN MALAYSIA
DEPARTMENT OF STATISTICS, MALAYSIA

 DrUzir_Mahidin   Dr_Uzir

27 June 2019

Contact person:

Public Relation Officer
 Strategic Communication and International Division
 Department of Statistics, Malaysia
Tel : +603-8885 7187 / 7942
Fax : +603-8888 9248
Email : jpbkpp[at]dosm.gov.my

Contact person:

Baharudin Mohamad
 Public Relation Officer
 Strategic Communication and International Division
 Department of Statistics Malaysia

Tel : +603-8090 4681

Fax : +603-8888 9248

Email : baharudin[at]dosm.gov.my

Copyright ©2025 Department of Statistics Malaysia Official Portal. All Rights Reserved.