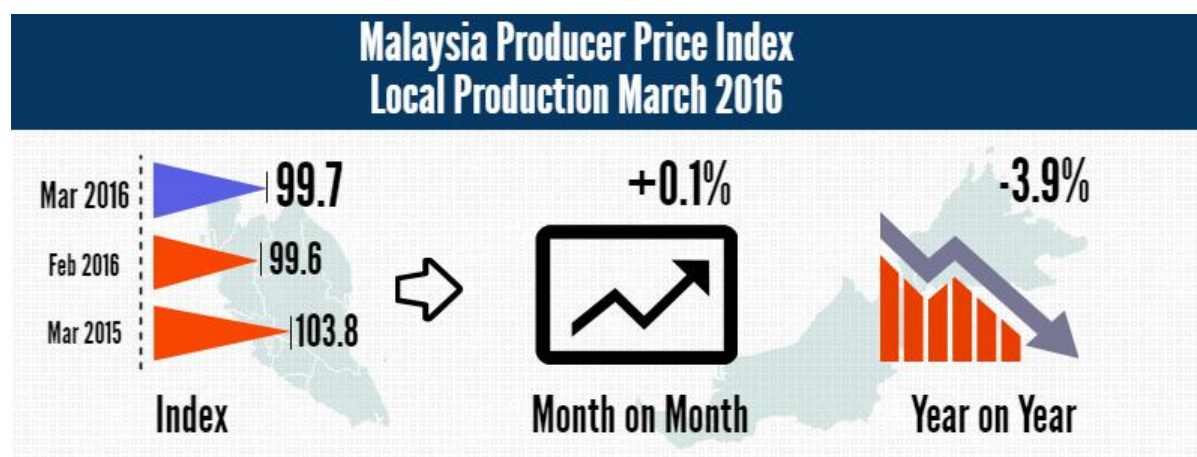




PRODUCER PRICE INDEX MALAYSIA MARCH 2016

Local Production

The Producer Price Index (PPI) for local production measures the average change in the prices of commodities charged by domestic producers of an industry in a reference month compared with the base year.



Producer Price Index (2010=100) By Sector (MSIC 2008)

Year-on-year comparison showed that the PPI for local production fell 3.9 per cent in March 2016. The highest drop was recorded by Mining index (-24.9%), followed by Electricity & gas (-5.0%) and Manufacturing (-2.8%). Meanwhile, the index for Agriculture, forestry & fishing and Water supply showed an increase of 8.3 per cent and 4.6 per cent respectively. [Table I].

The PPI for local production inclined by 0.1 per cent in March 2016 as compared to February 2016. This was due to increases in Agriculture, forestry & fishing (+3.9%). Meanwhile, the index for Mining decreased (-0.9%), followed by Manufacturing (-0.1%), Electricity & gas (-0.1%) and Water supply 0.1 per cent.

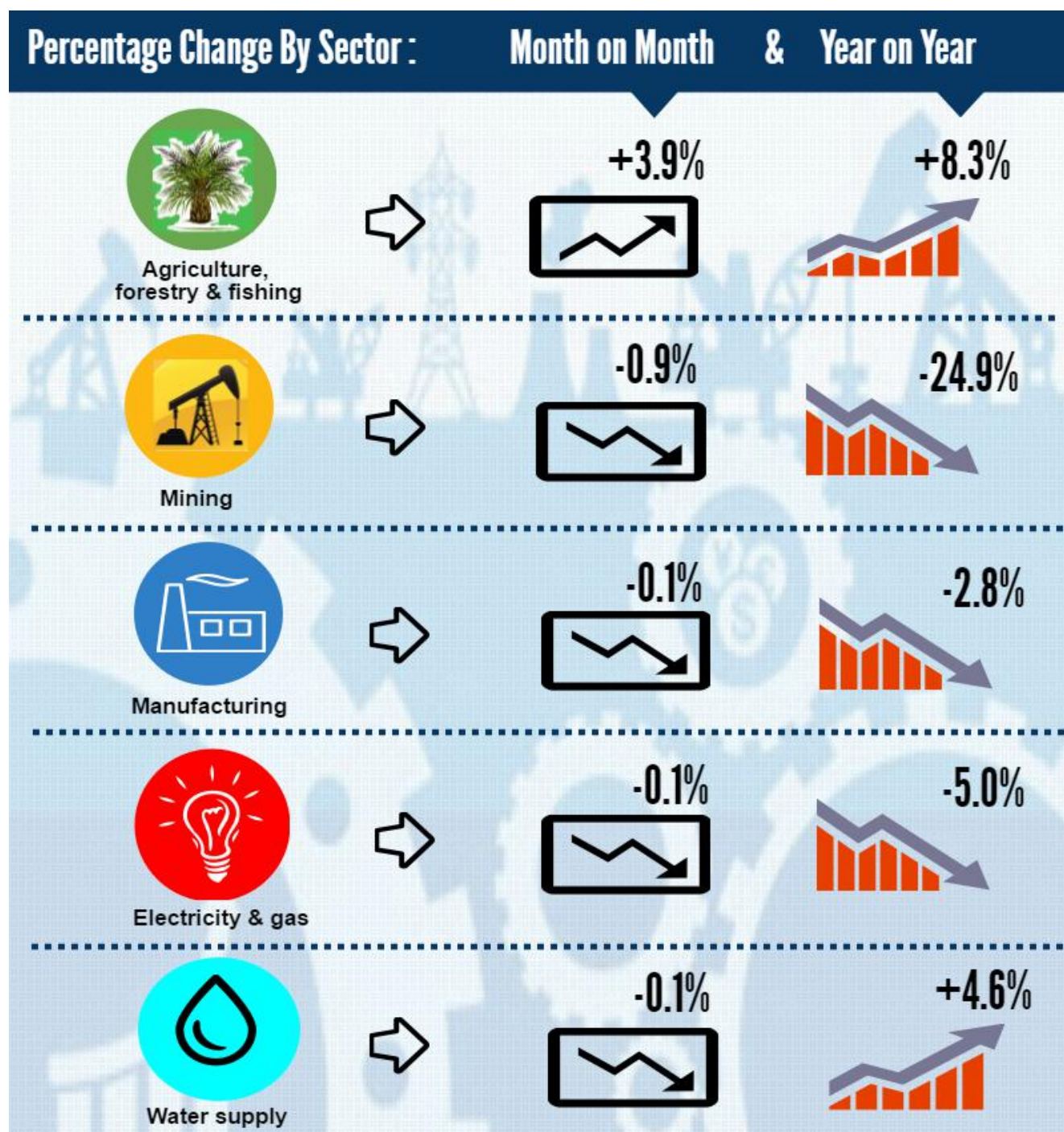
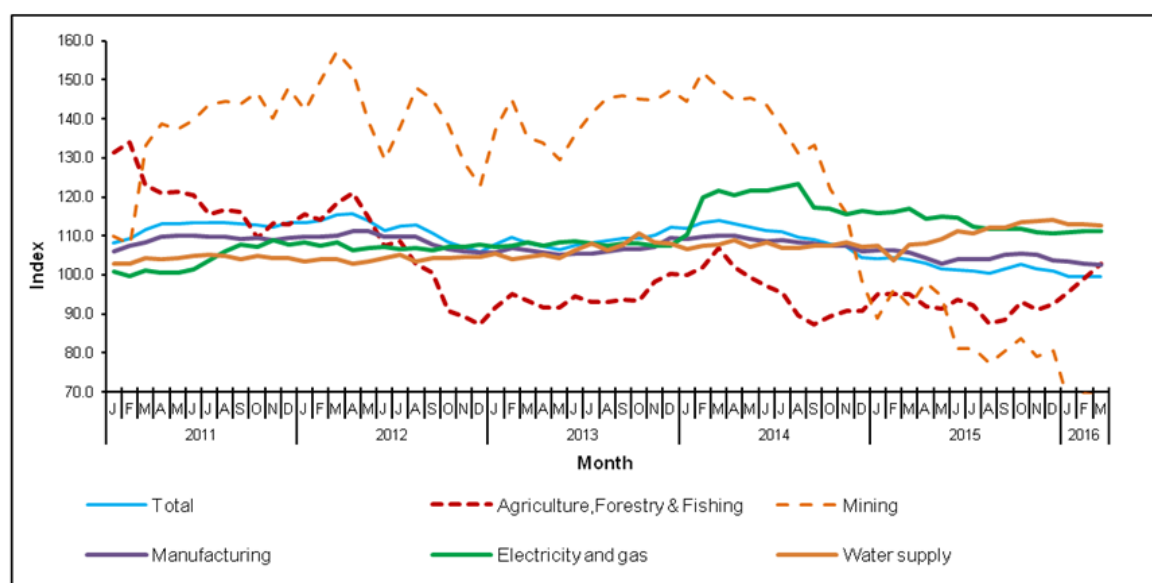


Table I : Producer Price Index (2010=100) Local Production By Sector (MSIC 2008), Malaysia

| Sector | Code | Weight | Index | Percentage Change Month on Month | | | Percentage Change Year on Year | | |
|---------------------------------|------|--------|-------|----------------------------------|-----------------------|-----------------------|--------------------------------|-----------------------|-----------------------|
| | | | | Mar. 2016 | Jan. 2016 / Dec. 2015 | Feb. 2016 / Jan. 2016 | Mar. 2016 / Feb. 2016 | Jan. 2016 / Jan. 2015 | Feb. 2016 / Feb. 2015 |
| Total | | 100.00 | 99.7 | -1.4 | 0.1 | 0.1 | -4.4 | -4.8 | -3.9 |
| Agriculture, Forestry & Fishing | A | 8.15 | 102.9 | 3.6 | 3.3 | 3.9 | 0.6 | 4.2 | 8.3 |
| Mining | B | 9.67 | 69.1 | -16.9 | 4.2 | -0.9 | -24.7 | -27.8 | -24.9 |
| Manufacturing | C | 78.79 | 102.7 | -0.4 | -0.6 | -0.1 | -2.8 | -3.2 | -2.8 |
| Electricity & gas | D | 3.05 | 111.1 | 0.2 | 0.2 | -0.1 | -4.1 | -4.2 | -5.0 |
| Water supply | E | 0.34 | 112.8 | -1.0 | -0.1 | -0.1 | 5.2 | 8.8 | 4.6 |

Chart I : Producer Price Index (2010=100) Local Production By Sector, 2011-2016



Producer Price Index By Stage of Processing

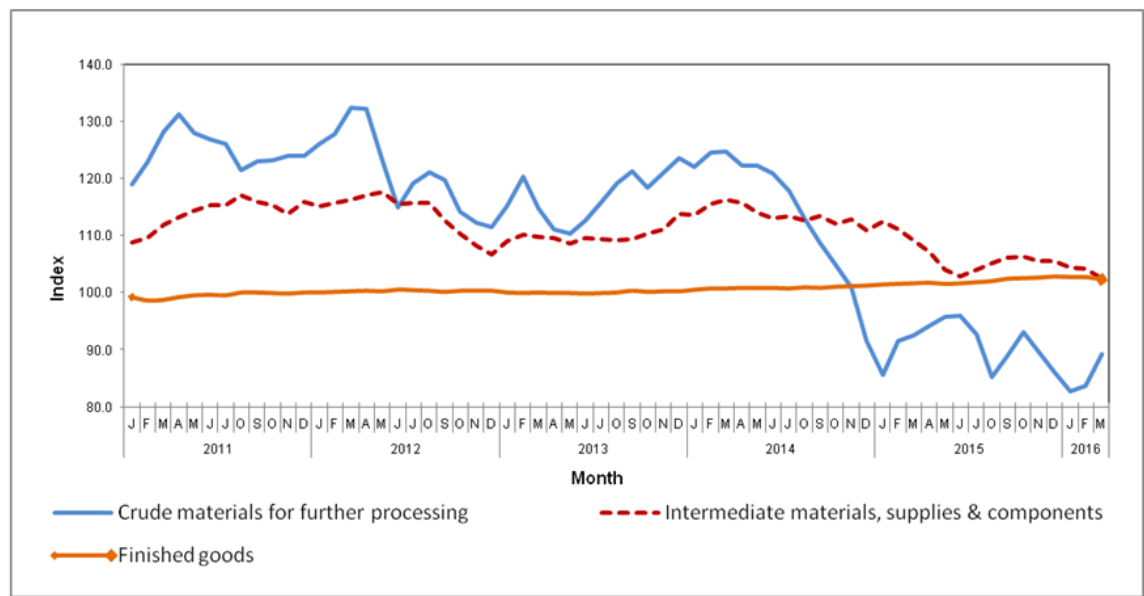
The PPI for local production by stage of processing (SOP) inclined by 0.1 per cent in March 2016 compared to the previous month. This inclination was due to an increase in Crude materials for further processing (+6.7%). However, Intermediate materials, supplies and components and Finished goods declined by 1.6 per cent and 0.4 per cent respectively. [Table II]

As compared with the same month a year ago, the PPI for local production by SOP for March 2016 dropped by 3.9 per cent. This was due to decreases in index for Crude materials for further processing (-3.5%), followed by index for Intermediate materials, supplies and components (-6.2%). However, index for Finished goods increased by 0.7 per cent.

Table II : Producer Price Index (2010=100), Local Production By Stage of Processing

| Stage Of Processing | Code | Weight | Index | Percentage Change Month on Month | | | Percentage Change Year on Year | | |
|--|----------|---------------|--------------|----------------------------------|-----------------------|-----------------------|--------------------------------|-----------------------|-----------------------|
| | | | Mar. 2016 | Jan. 2016 / Dec. 2015 | Feb. 2016 / Jan. 2016 | Mar. 2016 / Feb. 2016 | Jan. 2016 / Jan. 2015 | Feb. 2016 / Feb. 2015 | Mar. 2016 / Mar. 2015 |
| Total | | 100.00 | 99.7 | -1.4 | 0.1 | 0.1 | -4.4 | -4.8 | -3.9 |
| Crude materials for further processing | 1 | 20.32 | 89.2 | -3.9 | 1.1 | 6.7 | -3.3 | -8.6 | -3.5 |
| Intermediate materials, supplies and components | 2 | 53.56 | 102.4 | -1.1 | -0.2 | -1.6 | -7.2 | -6.3 | -6.2 |
| Finished goods | 3 | 26.12 | 102.4 | -0.1 | 0.0 | -0.4 | 1.3 | 1.2 | 0.7 |

Chart II : Producer Price Index (2010=100), Local Production By Stage of Processing, 2011-2016



RELEASED BY:

**THE OFFICE OF CHIEF STATISTICIAN MALAYSIA
DEPARTMENT OF STATISTICS MALAYSIA**

29 APRIL 2016

Contact person:

Ho Mei Kei
Public Relation Officer
Corporate and User Services Division
Department of Statistics, Malaysia
Tel : +603-8885 7942
Fax : +603-8888 9248
Email : mkho@stats.gov.my

Contact person:

Baharudin Mohamad
Public Relation Officer
Strategic Communication and International Division
Department of Statistics Malaysia
Tel : +603-8090 4681
Fax : +603-8888 9248
Email : baharudin[at]dosm.gov.my

Copyright ©2026 Department of Statistics Malaysia Official Portal. All Rights Reserved.