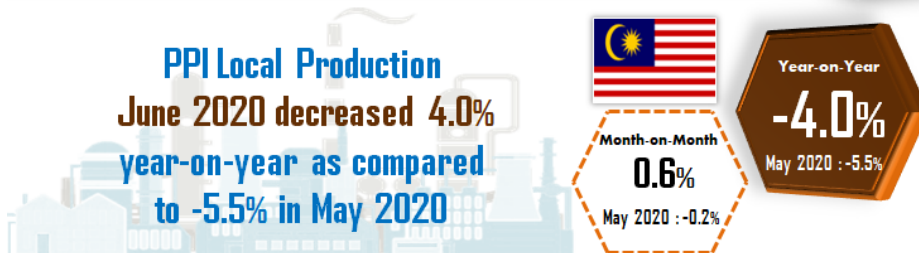
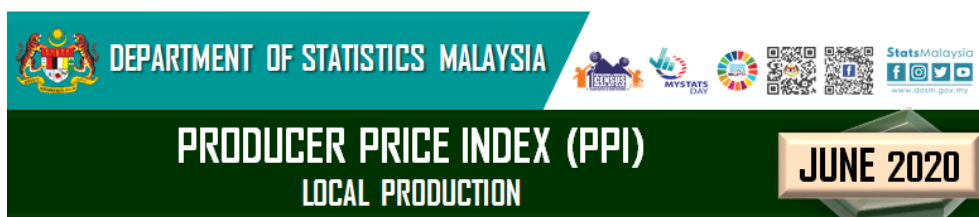
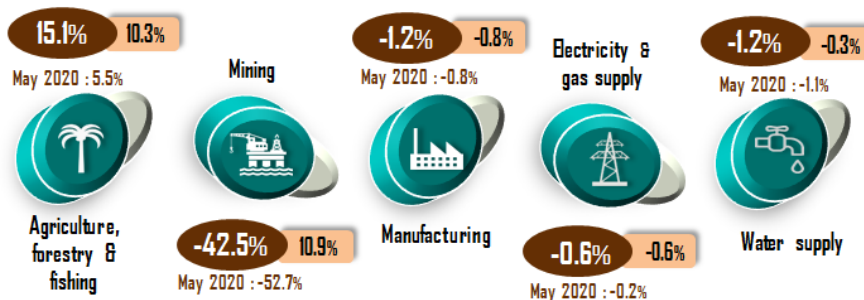




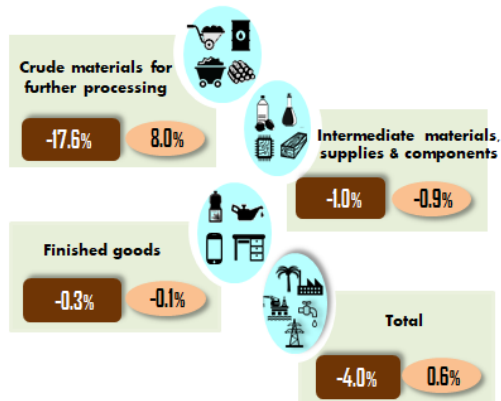
## PRODUCER PRICE INDEX MALAYSIA JUNE 2020



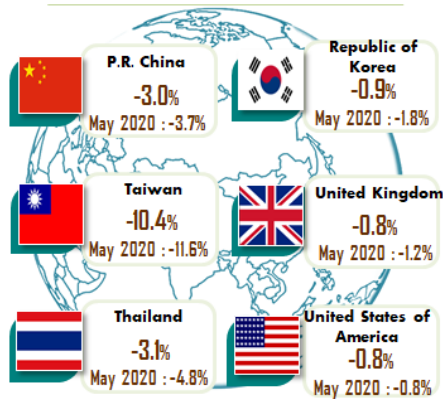
### PPI BY SECTOR



### PPI BY STAGE OF PROCESSING



### PPI SELECTED COUNTRIES



Source: <https://tradingeconomics.com>

## PRODUCER PRICE INDEX (2010=100) BY SECTOR (MSIC 2008)

Producer Price Index (PPI) local production dropped 4.0 per cent in June 2020 to 100.3 as against 99.7 in the same month of preceding year. The Mining index registered the highest rate of decline at 42.5 per cent, followed by Manufacturing 1.2 per cent, Water supply 1.2 per cent and Electricity & gas supply 0.6 per cent. In contrast, the index of Agriculture, forestry & fishing surged by 15.1 per cent.

On a monthly basis, the PPI local production registered a marginal increase of 0.6 per cent in June 2020 and was the first positive change for the year. This marginal increase was supported by the index of Mining (10.9%) and Agriculture, forestry & fishing (10.3%). However, Manufacturing, Electricity & gas supply and Water supply recorded a decrease of 0.8 per cent, 0.6 per cent and 0.3 per cent respectively. [Table 1]

**Table 1 : Producer Price Index (2010=100) Local Production by Sector (MSIC 2008), Malaysia**

Sector	Code	Weights	Index	Percentage Change					
			June 2020	Year-on-Year			Month-on-Month		
				Apr 2020/ Apr 2019	May 2020/ May 2019	June 2020/ June 2019	Apr 2020/ Mar 2020	May 2020/ Apr 2020	June 2020/ May 2020
<b>Total</b>		<b>100.000</b>	<b>100.3</b>	<b>-5.1</b>	<b>-5.5</b>	<b>-4.0</b>	<b>-2.7</b>	<b>-0.2</b>	<b>0.6</b>
Agriculture, forestry & fishing	A	6.730	103.5	8.7	5.5	15.1	-3.2	-4.5	10.3
Mining	B	7.927	57.8	-58.3	-52.7	-42.5	-30.6	16.6	10.9
Manufacturing	C	81.571	104.5	0.1	-0.8	-1.2	-0.7	-0.8	-0.8
Electricity & gas supply	D	3.442	117.1	0.2	-0.2	-0.6	-0.3	-0.3	-0.6
Water supply	E	0.330	110.5	-1.0	-1.1	-1.2	-0.6	-0.3	-0.3

## PPI LOCAL PRODUCTION FOR SECOND QUARTER 2020

PPI local production for the second quarter 2020 declined 4.9 per cent to 100.0 as compared to 105.1 in the same quarter of the previous year. The decline was contributed by the index of Mining (-51.4%), Water supply (-1.1%), Manufacturing (-0.7%) and Electricity & gas supply (-0.2%). Meanwhile, the index of Agriculture, forestry & fishing recorded an increase of 9.8 per cent. On a quarterly basis, the PPI local production fell 5.0 per cent as compared to -0.9 per cent in the first quarter 2020. [Table 2]

**Table 2 : Average Index and Percentage Change of Quarterly PPI Local Production by Sector**

Sector	Weights	Index			% Change	
		Q2 2019	Q1 2020	Q2 2020	Q2 2020/ Q2 2019	Q2 2020/ Q1 2020
<b>Total</b>	<b>100.000</b>	<b>105.1</b>	<b>105.3</b>	<b>100.0</b>	<b>-4.9</b>	<b>-5.0</b>
Agriculture, forestry & fishing	6.730	89.7	105.6	98.5	9.8	-6.7
Mining	7.927	105.9	87.7	51.5	-51.4	-41.3
Manufacturing	81.571	106.0	106.9	105.3	-0.7	-1.5
Electricity & gas supply	3.442	117.9	118.1	117.7	-0.2	-0.3
Water supply	0.330	112.0	111.5	110.8	-1.1	-0.6

## PRODUCER PRICE INDEX BY STAGE OF PROCESSING

The PPI local production by stage of processing in June 2020 for Crude materials for further processing, Intermediate materials, supplies & components and Finished goods decreased 17.6 per cent, 1.0 per cent and 0.3 per cent respectively as compared to the same month of the preceding year.

As compared to the previous month, the PPI local production recorded a marginal increase of 0.6 per cent in June 2020 supported by the increase in the index of Crude materials for further processing (8.0%). Nevertheless, the index of Intermediate materials, supplies & components and Finished goods showed a decrease of 0.9 per cent and 0.1 per cent respectively. [Table 3]

**Table 3 : Producer Price Index (2010=100), Local Production by Stage of Processing**

			Index	Percentage Change					
				Year-on-Year			Month-on-Month		
Stage of Processing	Code	Weights	June 2020	Apr 2020/ Apr 2019	May 2020/ May 2019	June 2020/ June 2019	Apr 2020/ Mar 2020	May 2020/ Apr 2020	June 2020/ May 2020
<b>Total</b>		<b>100.000</b>	<b>100.3</b>	<b>-5.1</b>	<b>-5.5</b>	<b>-4.0</b>	<b>-2.7</b>	<b>-0.2</b>	<b>0.6</b>
Crude materials for further processing	1	16.410	86.0	-28.9	-26.6	-17.6	-14.1	3.4	8.0
Intermediate materials, supplies and components	2	56.119	104.7	0.4	-0.9	-1.0	-0.7	-1.1	-0.9
Finished goods	3	27.471	101.2	1.1	0.2	-0.3	0.1	-0.5	-0.1

**Released by:**

**DATO' SRI DR. MOHD UZIR MAHIDIN**  
**CHIEF STATISTICIAN MALAYSIA**  
**DEPARTMENT OF STATISTICS, MALAYSIA**

 DrUzir\_Mahidin   Dr\_Uzir

**29<sup>th</sup> July 2020**

**Contact person:**

Mohd Yusrizal Ab Razak  
 Public Relation Officer  
 Strategic Communication and International Division  
 Department of Statistics, Malaysia  
 Tel : +603-8885 7942  
 Fax : +603-8888 9248  
 E-mail : yusrizal.razak[at]dosm.gov.my

**Contact person:**

Baharudin Mohamad  
 Public Relation Officer

Strategic Communication and International Division  
Department of Statistics Malaysia  
Tel : +603-8090 4681  
Fax : +603-8888 9248  
Email : baharudin[at]dosm.gov.my

**Copyright ©2025 Department of Statistics Malaysia Official Portal. All Rights Reserved.**