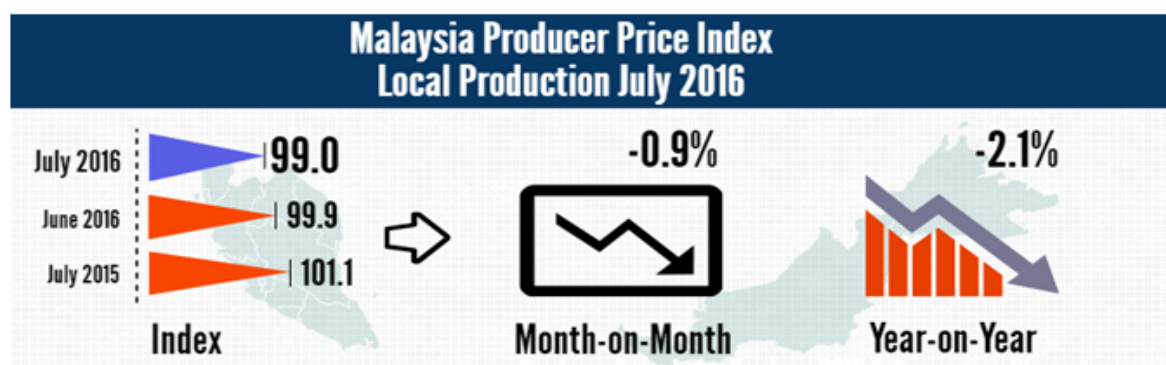




PRODUCER PRICE INDEX MALAYSIA JULY 2016

Local Production

The Producer Price Index (PPI) for local production measures the average change in the prices of commodities charged by domestic producers of an industry in a reference month compared with the base year.

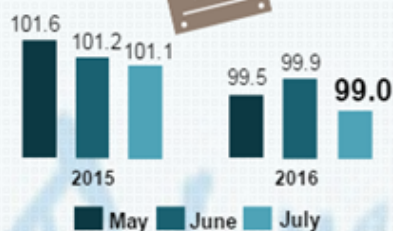


Producer Price Index (2010=100) By Sector (MSIC 2008)

Year-on-year comparison showed that the PPI for local production fell 2.1 per cent in July 2016. The highest drop was recorded by Mining index (-17.5%), followed by Manufacturing (-2.0%). Meanwhile, the index for Agriculture, forestry & fishing, Water supply and Electricity & gas showed an increase of 10.7 per cent, 2.9 per cent and 0.6 per cent respectively. [Table I].

The PPI for local production declined by 0.9 per cent in July 2016 as compared to June 2016. This was due to decreases in all sectors namely, Mining (-8.5%), Agriculture, forestry & fishing (-2.8%), Water supply (-1.0%), Electricity & gas (-0.3%) and Manufacturing (-0.1%).

Producer Price Index & Percentage Change, July 2016 :



Month-on-Month

Year-on-Year

-0.9%

-2.1%


Agriculture,
forestry & fishing

-2.8%

+10.7%


Mining


-8.5%

-17.5%


Manufacturing


-0.1%

-2.0%


Electricity & gas ⁽¹⁾

-0.3%

+0.6%


Water supply ⁽¹⁾

-1.0%

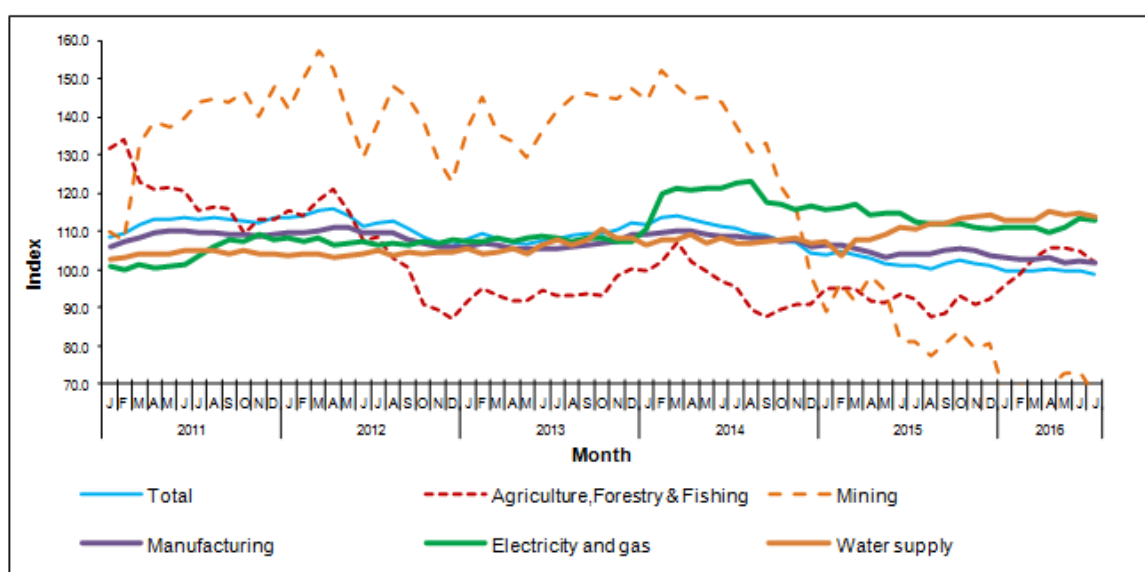
+2.9%

Note: ⁽¹⁾ Prices used in constructing the index is refer to net transaction prices by producers receive for sales of their outputs.

Table I : Producer Price Index (2010=100) Local Production By Sector (MSIC 2008), Malaysia

Sector	Code	Weight	Index	Percentage Change Month on Month			Percentage Change Year on Year		
				July 2016	May 2016 / Apr. 2016	June 2016 / May 2016	July 2016 / June 2016	May 2016/ May 2015	June 2016 / June 2015
Total		100.00	99.0	-0.7	0.4	-0.9	-2.1	-1.3	-2.1
Agriculture, Forestry & Fishing	A	8.15	102.0	0.1	-0.9	-2.8	15.9	12.0	10.7
Mining	B	9.67	67.0	5.4	0.5	-8.5	-23.1	-9.6	-17.5
Manufacturing	C	78.79	102.0	-1.3	0.4	-0.1	-1.3	-1.7	-2.0
Electricity & gas	D	3.05	113.0	0.9	2.2	-0.3	-3.6	-1.1	0.6
Water supply	E	0.34	113.8	-0.9	0.6	-1.0	4.7	3.4	2.9

Chart I : Producer Price Index (2010=100) Local Production By Sector, 2011-2016



Producer Price Index By Stage of Processing

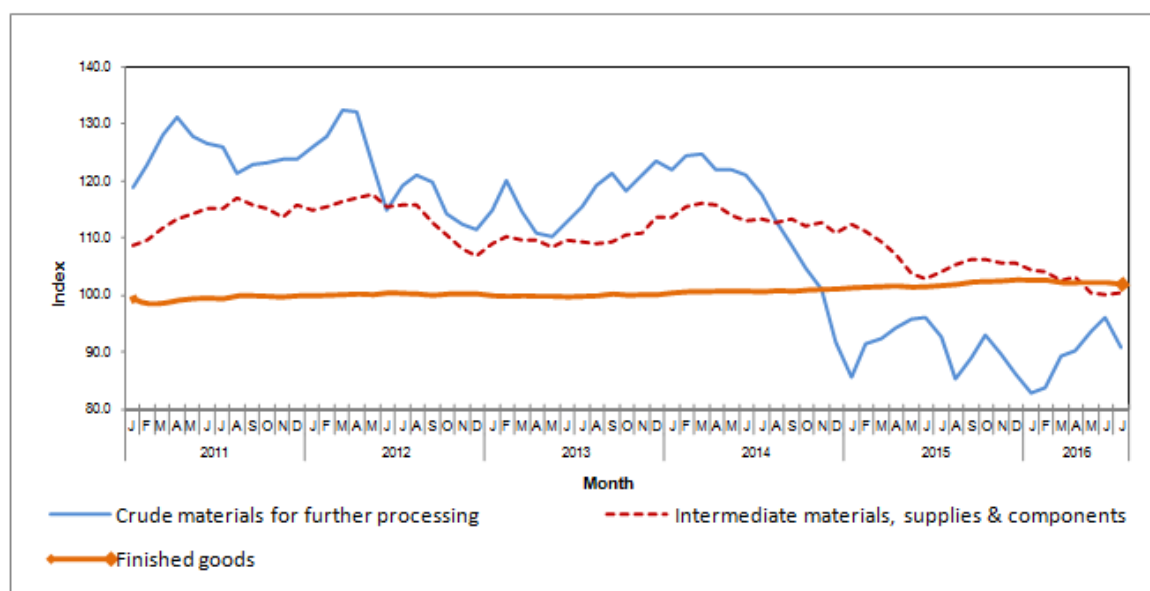
The PPI for local production by stage of processing (SOP) declined by 0.9 per cent in July 2016 compared to the previous month. This declination was due to a decrease in Crude materials for further processing (-5.6%) and Finished goods (-0.3%). Meanwhile, Intermediate materials, supplies and components increased (+0.4%). [Table II]

As compared with the same month a year ago, the PPI for local production by SOP for July 2016 dropped by 2.1 per cent. This was due to decreases in index for Intermediate materials, supplies and components (-3.4%) and Crude materials for further processing (-2.0%). However, index for Finished goods increased by 0.2 per cent.

Table II : Producer Price Index (2010=100), Local Production By Stage of Processing

Stage Of Processing	Code	Weight	Index	Percentage Change Month on Month			Percentage Change Year on Year		
			July 2016	May 2016 / Apr. 2016	June 2016 / May 2016	July 2016 / June 2016	May 2016/ May 2015	June 2016 / June 2015	July 2016 / July 2015
Total		100.00	99.0	-0.7	0.4	-0.9	-2.1	-1.3	-2.1
Crude materials for further processing	1	20.32	90.8	4.0	2.7	-5.6	-2.2	0.2	-2.0
Intermediate materials, supplies and components	2	53.56	100.5	-2.5	-0.3	0.4	-3.4	-2.7	-3.4
Finished goods	3	26.12	102.1	0.0	0.0	-0.3	0.8	0.7	0.2

Chart II : Producer Price Index (2010=100), Local Production By Stage of Processing, 2011-2016



RELEASED BY:

**THE OFFICE OF CHIEF STATISTICIAN MALAYSIA
DEPARTMENT OF STATISTICS MALAYSIA**

30 AUGUST 2016

Contact person:

Ho Mei Kei
Public Relation Officer
Corporate and User Services Division
Department of Statistics, Malaysia
Tel : +603-8885 7942
Fax : +603-8888 9248
Email : mkho[at]stats.gov.my

Contact person:

Baharudin Mohamad
Public Relation Officer
Strategic Communication and International Division
Department of Statistics Malaysia
Tel : +603-8090 4681
Fax : +603-8888 9248
Email : baharudin[at]dosm.gov.my

Copyright ©2025 Department of Statistics Malaysia Official Portal. All Rights Reserved.