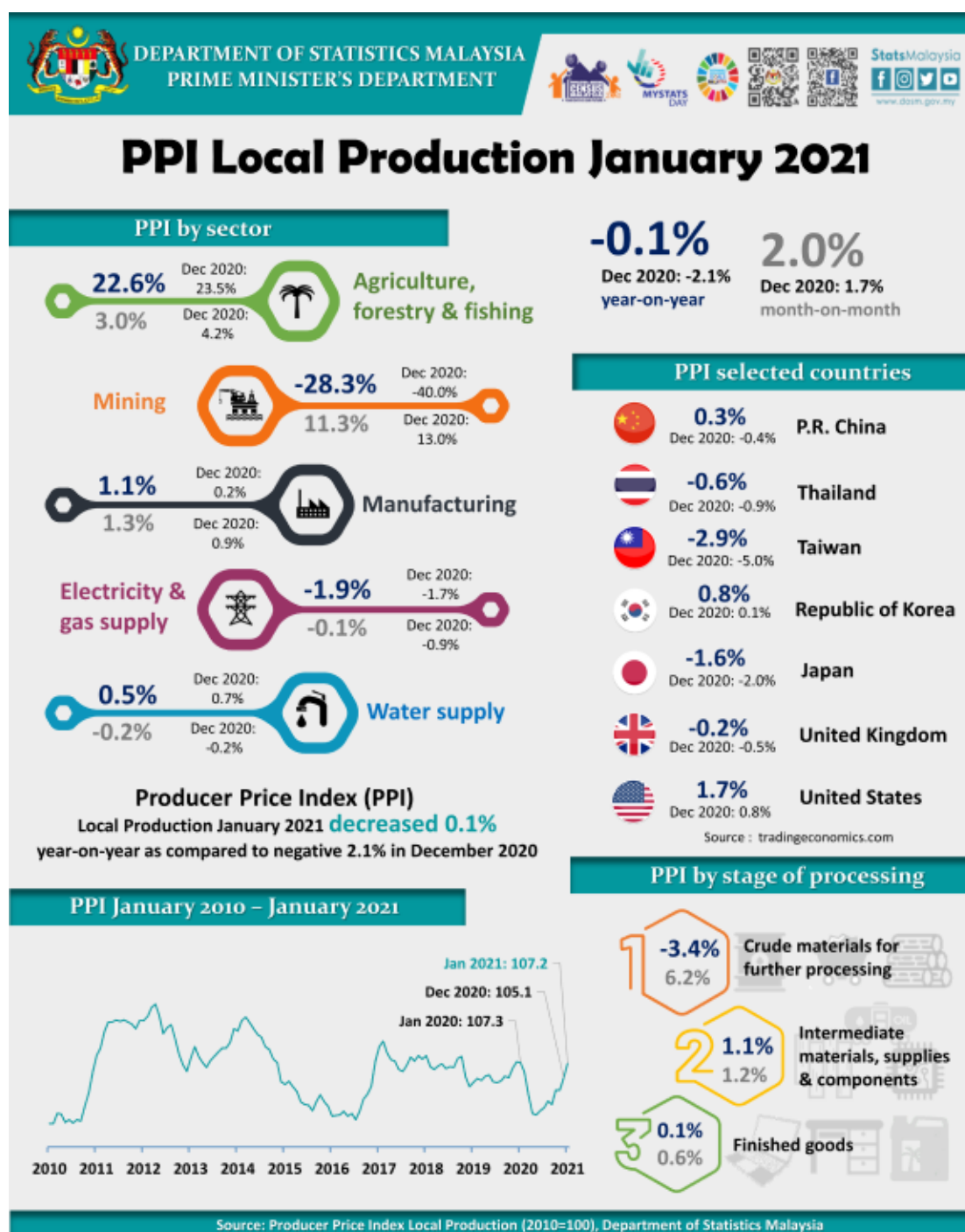




## PRODUCER PRICE INDEX MALAYSIA JANUARY 2021



## PRODUCER PRICE INDEX (2010=100) BY SECTOR (MSIC 2008)

Producer Price Index (PPI) local production improved with a growth of negative 0.1 per cent in January 2021 as compared to negative 2.1 per cent in December 2020. Index of Agriculture, forestry & fishing remained increased at a slower pace 22.6 per cent due to the reduction of prices in the main commodity. Meanwhile, the index of Manufacturing sector registered an increase of 1.1 per cent, higher than the previous month (December 2020: 0.2%). Similarly, index of Water supply increased 0.5 per cent. In contrast, Mining sector improved with a negative growth of 28.3 per cent as compared to the previous month (December 2020: -40.0%), contributed by the increase in prices of oil and gas commodities. However, Electricity & gas supply decreased 1.9 per cent.

On a monthly basis, the PPI local production rose 2.0 per cent in January 2021. The increase was attributed by the index of Mining which recorded a double-digit increase (11.3%), followed by Agriculture, forestry & fishing (3.0%) and Manufacturing (1.3%). Meanwhile, Water supply and Electricity & gas supply declined 0.2 per cent and 0.1 per cent respectively.

**Table 1 : Producer Price Index (2010=100) Local Production by Sector (MSIC 2008), Malaysia**

Sector	Code	Weight	Index	Percentage Change					
				Year-on-Year			Month-on-Month		
			Jan 2021	Nov 2020/ Nov 2019	Dec 2020/ Dec 2019	Jan 2021/ Jan 2020	Nov 2020/ Oct 2020	Dec 2020/ Nov 2020	Jan 2021/ Dec 2020
<b>Total</b>		<b>100.000</b>	<b>107.2</b>	<b>-3.0</b>	<b>-2.1</b>	<b>-0.1</b>	<b>2.0</b>	<b>1.7</b>	<b>2.0</b>
Agriculture, forestry & fishing	A	6.730	136.9	21.5	23.5	22.6	11.1	4.2	3.0
Mining	B	7.927	74.6	-45.8	-40.0	-28.3	4.4	13.0	11.3
Manufacturing	C	81.571	108.1	-0.1	0.2	1.1	0.9	0.9	1.3
Electricity & gas supply	D	3.442	115.6	-0.2	-1.7	-1.9	0.7	-0.9	-0.1
Water supply	E	0.330	112.3	0.9	0.7	0.5	0.0	-0.2	-0.2

## PRODUCER PRICE INDEX BY STAGE OF PROCESSING

As compared to the same month of the preceding year, the index for Crude materials for further processing dipped by 3.4 per cent in January 2021. However, Intermediate materials, supplies & components and Finished goods edged up 1.1 per cent and 0.1 per cent respectively.

On a monthly basis, PPI by all stages of processing increased. Crude materials for further processing rose by 6.2 per cent followed by Intermediate materials, supplies & components (1.2%) and Finished goods (0.6%).

**Table 2 : Producer Price Index (2010=100), Local Production by Stage of Processing**

Stage of Processing	Code	Weight	Index						
			Jan 2021	Year-on-Year		Percentage Change			
				Nov 2020/ Nov 2019	Dec 2020/ Dec 2019	Jan 2021/ Jan 2020	Nov 2020/ Oct 2020	Dec 2020/ Nov 2020	Jan 2021/ Dec 2020
<b>Total</b>		<b>100.000</b>	<b>107.2</b>	<b>-3.0</b>	<b>-2.1</b>	<b>-0.1</b>	<b>2.0</b>	<b>1.7</b>	<b>2.0</b>
Crude materials for further processing	1	16.410	110.0	-12.3	-10.0	-3.4	7.6	6.3	6.2
Intermediate materials, supplies and components	2	56.119	108.8	-1.0	0.3	1.1	1.0	1.3	1.2
Finished goods	3	27.471	101.9	-0.2	-0.8	0.1	0.4	-0.1	0.6

The full publication of the Producer Price Index Malaysia, January 2021 can be downloaded from [eStatistik](#) portal.

### Released by:

**DATO' SRI DR. MOHD UZIR MAHIDIN**  
**CHIEF STATISTICIAN MALAYSIA**  
**DEPARTMENT OF STATISTICS, MALAYSIA**

 [DrUzir\\_Mahidin](#)  [Dr\\_Uzir](#) 

#myHariBulan# #myBulan# #myTahun#

### Contact person:

Mohd Yusrizal Ab Razak  
 Public Relation Officer  
 Strategic Communication and International Division  
 Department of Statistics, Malaysia  
 Tel : +603-8885 7942  
 Fax : +603-8888 9248  
 E-mail : yusrizal.razak[at]dosm.gov.my

### Contact person:

Baharudin Mohamad

Public Relation Officer  
Strategic Communication and International Division  
Department of Statistics Malaysia  
Tel : +603-8090 4681  
Fax : +603-8888 9248  
Email : baharudin[at]dosm.gov.my

**Copyright ©2025 Department of Statistics Malaysia Official Portal. All Rights Reserved.**