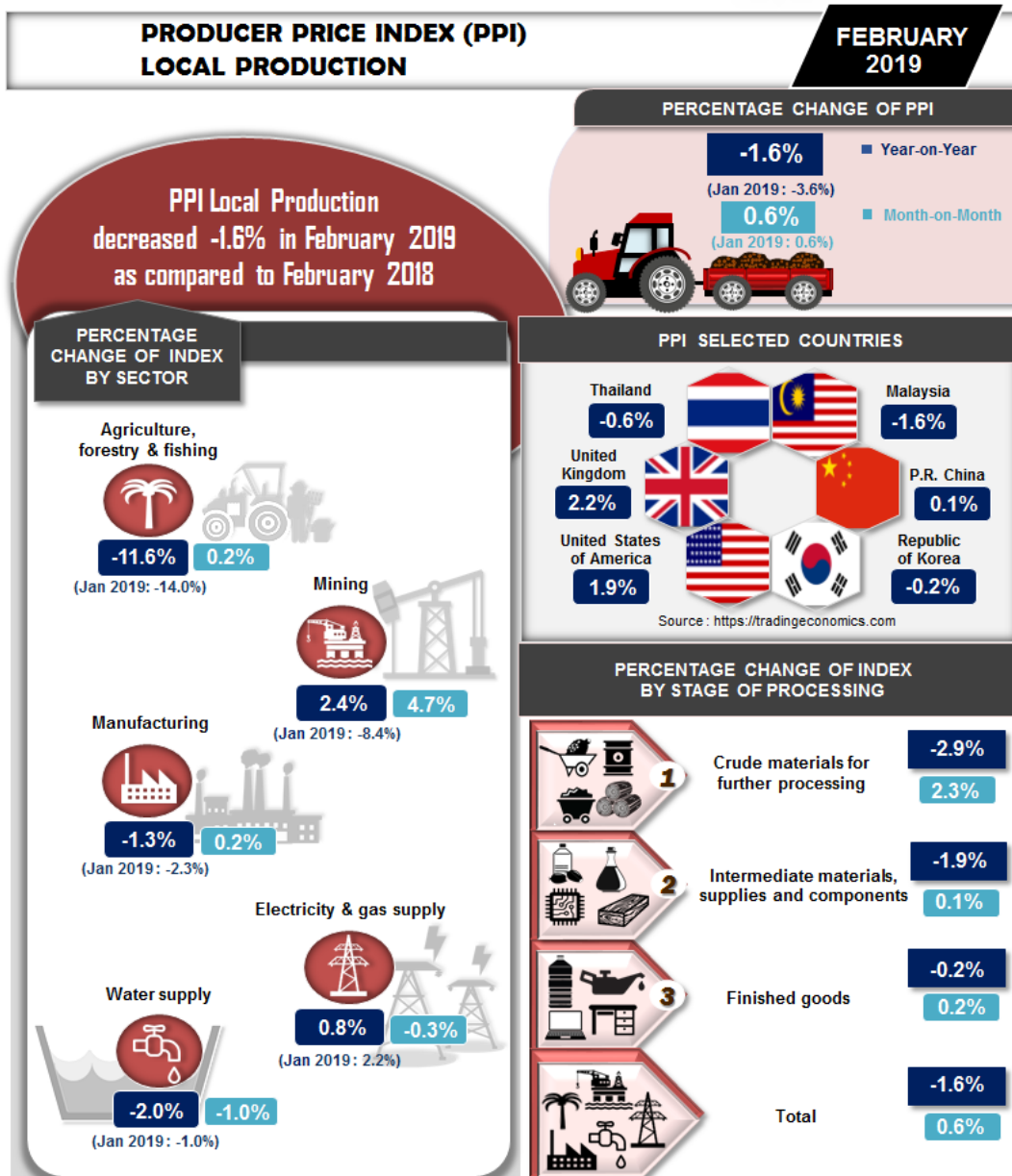




## PRODUCER PRICE INDEX MALAYSIA FEBRUARY 2019



Department of Statistics Malaysia  
<https://www.dosm.gov.my>



Source : Producer Price Index Local Production (2010=100), February 2019

## PRODUCER PRICE INDEX (2010=100) BY SECTOR (MSIC 2008)

The Producer Price Index (PPI) local production decreased 1.6 per cent in February 2019 as compared to the same period of the preceding year. The decline was led by the index of Agriculture, forestry & fishing (-11.6%), Water supply (-2.0%) and Manufacturing (-1.3%). Conversely, the index of Mining and Electricity & gas supply increased 2.4 per cent and 0.8 per cent respectively.

On monthly basis, the PPI local production rose 0.6 per cent as compared to January 2019. The increase was supported by the index of Mining (+4.7%), Manufacturing (+0.2%) and Agriculture, forestry & fishing (+0.2%). However, the index of Water supply and Electricity & gas supply recorded a decline of 1.0 per cent and 0.3 per cent respectively. PPI local production for the period January-February 2019 registered a decrease of 2.6 per cent as compared to the same period last year.

**Table I: Producer Price Index (2010=100) Local Production by Sector (MSIC 2008), Malaysia**

Sector	Code	Weights	Index Feb 2019	Percentage Change					
				Year-on-Year		Month-on-Month			
				Dec 2018/ Dec 2017	Jan 2019/ Jan 2018	Feb 2019/ Feb 2018	Dec 2018/ Nov 2018	Jan 2019/ Dec 2018	Feb 2019/ Jan 2018
Total		100.000	105.0	-3.7	-3.6	-1.6	-1.3	0.6	0.6
Agriculture, forestry & fishing	A	6.730	94.9	-17.6	-14.0	-11.6	0.9	7.2	0.2
Mining	B	7.927	99.8	-4.3	-8.4	2.4	-8.9	1.8	4.7
Manufacturing	C	81.571	106.1	-2.6	-2.3	-1.3	-0.7	-0.1	0.2
Electricity & gas supply	D	3.442	116.3	1.6	2.2	0.8	0.1	0.3	-0.3
Water supply	E	0.330	111.9	0.8	-1.0	-2.0	0.6	-1.7	-1.0

## PRODUCER PRICE INDEX BY STAGE OF PROCESSING

In February 2019, the PPI local production at all stage of processing showed a decline as compared to the same month last year. It was contributed by the index of Crude materials for further processing (-2.9%), Intermediate materials, supplies and components (-1.9%) and Finished goods (-0.2%).

As compared to the previous month, the PPI local production of Crude materials for further processing rose 2.3 per cent, followed by Finished goods 0.2 per cent and Intermediate materials, supplies & components 0.1 per cent.

**Table II: Producer Price Index (2010=100), Local Production by Stage of Processing**

Stage of Processing	Code	Weights	Index Feb 2019	Percentage Change					
				Year-on-Year		Month-on-Month			
				Dec 2018/ Dec 2017	Jan 2019/ Jan 2018	Feb 2019/ Feb 2018	Dec 2018/ Nov 2018	Jan 2019/ Dec 2018	Feb 2019/ Jan 2018
Total		100.000	105.0	-3.7	-3.6	-1.6	-1.3	0.6	0.6
Crude materials for further processing	1	16.410	105.3	-9.9	-9.7	-2.9	-5.5	3.7	2.3
Intermediate materials, supplies and components	2	56.119	106.6	-2.3	-2.2	-1.9	-0.7	-0.3	0.1
Finished goods	3	27.471	101.2	-1.9	-1.8	-0.2	0.7	0.1	0.2

### Released By:

**DATO' SRI DR. MOHD UZIR MAHIDIN**  
**CHIEF STATISTICIAN MALAYSIA**  
**DEPARTMENT OF STATISTICS, MALAYSIA**

 DrUzir\_Mahidin   Dr\_Uzir

**28 March 2019**

### Contact person:

Ho Mei Kei  
Public Relation Officer  
Strategic Communication and International Division  
Department of Statistics, Malaysia  
Tel : +603-8885 7942  
Fax : +603-8888 9248  
Email : mkho[at]dosm.gov.my

### Contact person:

Baharudin Mohamad  
Public Relation Officer  
Strategic Communication and International Division  
Department of Statistics Malaysia  
Tel : +603-8090 4681

Fax : +603-8888 9248

Email : baharudin[at]dosm.gov.my

**Copyright ©2025 Department of Statistics Malaysia Official Portal. All Rights Reserved.**