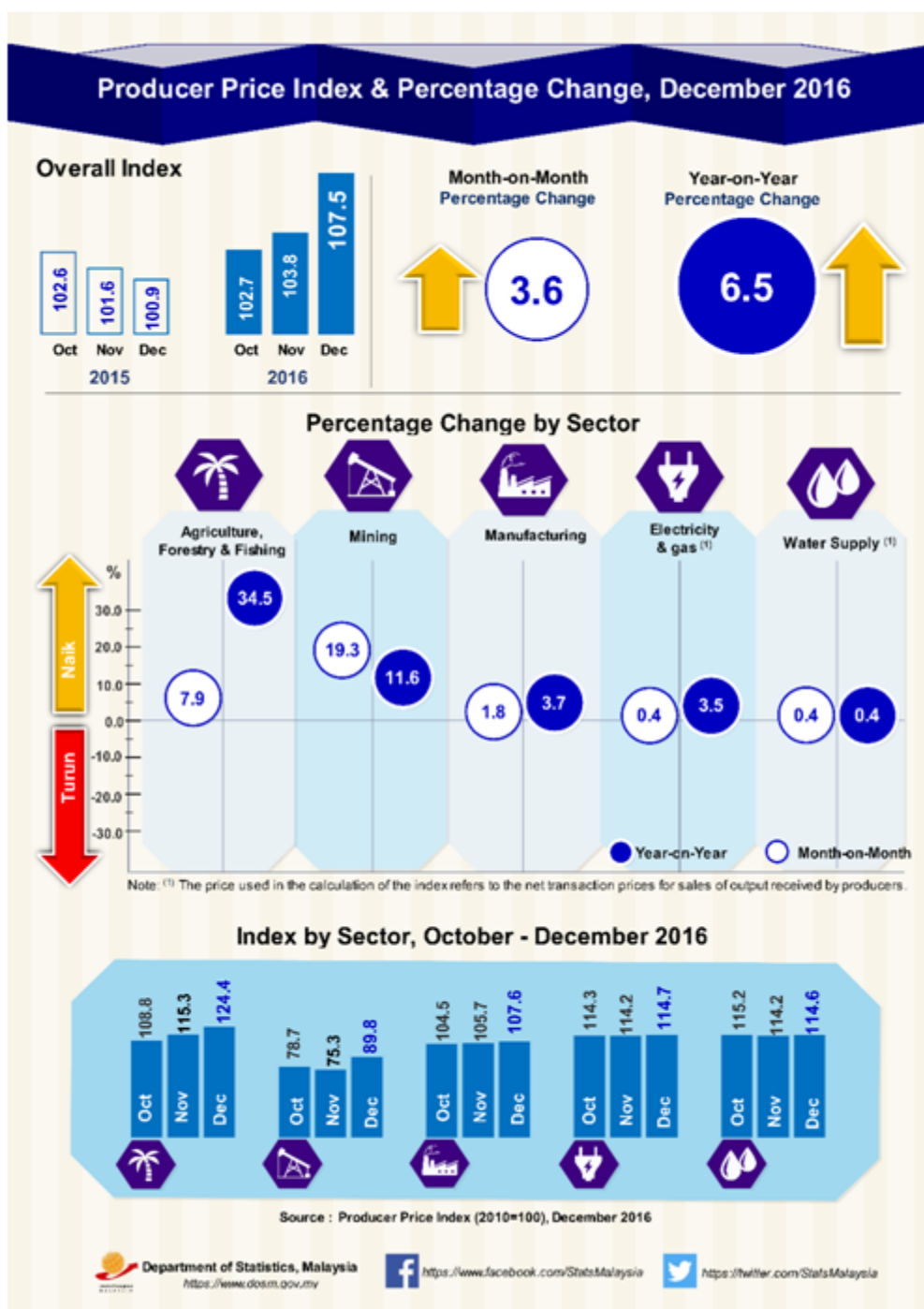




## PRODUCER PRICE INDEX MALAYSIA DECEMBER 2016



## Producer Price Index (2010=100) by Sector (MSIC 2008)

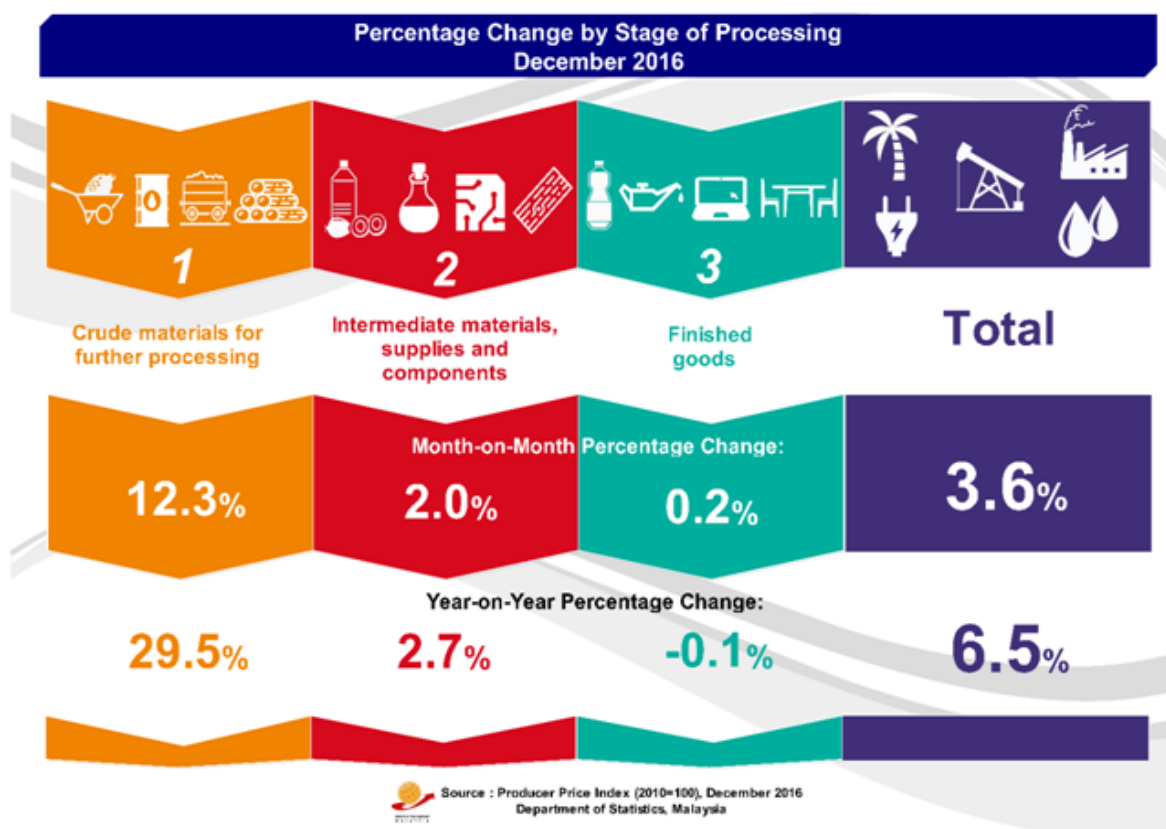
Year-on-year comparison showed that the Producer Price Index (PPI) for local production surged 6.5 per cent in December 2016. The highest increase was recorded by Agriculture, forestry & fishing index (+34.5%) followed by Mining (+11.6%), Manufacturing (+3.7%), Electricity & gas (+3.5%) and Water supply (+0.4%).[Table I]

The PPI for local production inclined by 3.6 per cent in December 2016 compared to November 2016. This was due to increases in all sectors namely, Mining (+19.3%), Agriculture, forestry & fishing (+7.9%), Manufacturing (+1.8%), Electricity & gas and Water supply which recorded increases of 0.4 per cent respectively.

**Table I : Producer Price Index (2010=100) Local Production by Sector (MSIC 2008), Malaysia**

Sector	Code	Weight	Index	Percentage Change Month-on-Month			Percentage Change Year-on-Year		
			Dec 2016	Oct 2016/ Sept 2016	Nov 2016/ Oct 2016	Dec 2016/ Nov 2016	Oct 2016/ Oct 2015	Nov 2016/ Nov 2015	Dec 2016/ Dec 2015
<b>Total</b>		<b>100.0</b>	<b>107.5</b>	<b>0.7</b>	<b>1.1</b>	<b>3.6</b>	<b>0.1</b>	<b>2.2</b>	<b>6.5</b>
<b>Agriculture, Forestry &amp; Fishing</b>	<b>A</b>	<b>8.2</b>	<b>124.4</b>	<b>-4.1</b>	<b>6.0</b>	<b>7.9</b>	<b>16.9</b>	<b>26.7</b>	<b>34.5</b>
<b>Mining</b>	<b>B</b>	<b>9.7</b>	<b>89.8</b>	<b>10.2</b>	<b>-4.3</b>	<b>19.3</b>	<b>-6.1</b>	<b>-4.8</b>	<b>11.6</b>
<b>Manufacturing</b>	<b>C</b>	<b>78.8</b>	<b>107.6</b>	<b>0.5</b>	<b>1.1</b>	<b>1.8</b>	<b>-0.9</b>	<b>0.6</b>	<b>3.7</b>
<b>Electricity &amp; gas</b>	<b>D</b>	<b>3.1</b>	<b>114.7</b>	<b>0.8</b>	<b>-0.1</b>	<b>0.4</b>	<b>2.1</b>	<b>3.0</b>	<b>3.5</b>
<b>Water supply</b>	<b>E</b>	<b>0.3</b>	<b>114.6</b>	<b>0.3</b>	<b>-0.9</b>	<b>0.4</b>	<b>1.5</b>	<b>0.4</b>	<b>0.4</b>

## Producer Price Index by Stage of Processing



The PPI for local production by stage of processing (SOP) inclined by 3.6 per cent in December 2016 compared to the previous month. This inclination was due to increases in the indices for Crude materials for further processing (+12.3%), Intermediate materials, supplies and components (+2.0%) and Finished goods (+0.2%). [Table II]

As compared with the same month a year ago, the PPI for local production by SOP for December 2016 increased by 6.5 per cent. This was due to an increase in index for Crude materials for further processing (+29.5%) and Intermediate materials, supplies and components (+2.7%). However, the index for Finished goods dropped by 0.1 per cent.

**Table II : Producer Price Index (2010=100), Local Production by Stage of Processing**

Stage of Processing	Code	Weight	Index	Percentage Change Month-on-Month			Percentage Change Year-on-Year		
				Oct 2016/ Dec 2016	Nov 2016/ Oct 2016	Dec 2016/ Nov 2016	Oct 2016/ Oct 2015	Nov 2016/ Nov 2015	Dec 2016/ Dec 2015
<b>Total</b>		<b>100.0</b>	<b>107.5</b>	<b>0.7</b>	<b>1.1</b>	<b>3.6</b>	<b>0.1</b>	<b>2.2</b>	<b>6.5</b>
Crude materials for further processing	1	20.3	111.5	1.5	0.1	12.3	6.6	10.7	29.5
Intermediate materials, supplies and components	2	53.6	108.3	0.8	2.0	2.0	-2.0	0.6	2.7
Finished goods	3	26.1	102.8	0.0	0.0	0.2	0.0	-0.1	-0.1

**Released By:****THE OFFICE OF CHIEF STATISTICIAN MALAYSIA****DEPARTMENT OF STATISTICS, MALAYSIA****31 January 2017****Contact person:****Ho Mei Kei****Public Relation Officer****Corporate and User Services Division****Department of Statistics, Malaysia****Tel : +603-8885 7942****Fax : +603-8888 9248****Email : mkho[at]stats.gov.my****Contact person:****Baharudin Mohamad****Public Relation Officer****Strategic Communication and International Division****Department of Statistics Malaysia****Tel : +603-8090 4681****Fax : +603-8888 9248****Email : baharudin[at]dosm.gov.my****Copyright ©2026 Department of Statistics Malaysia Official Portal. All Rights Reserved.**