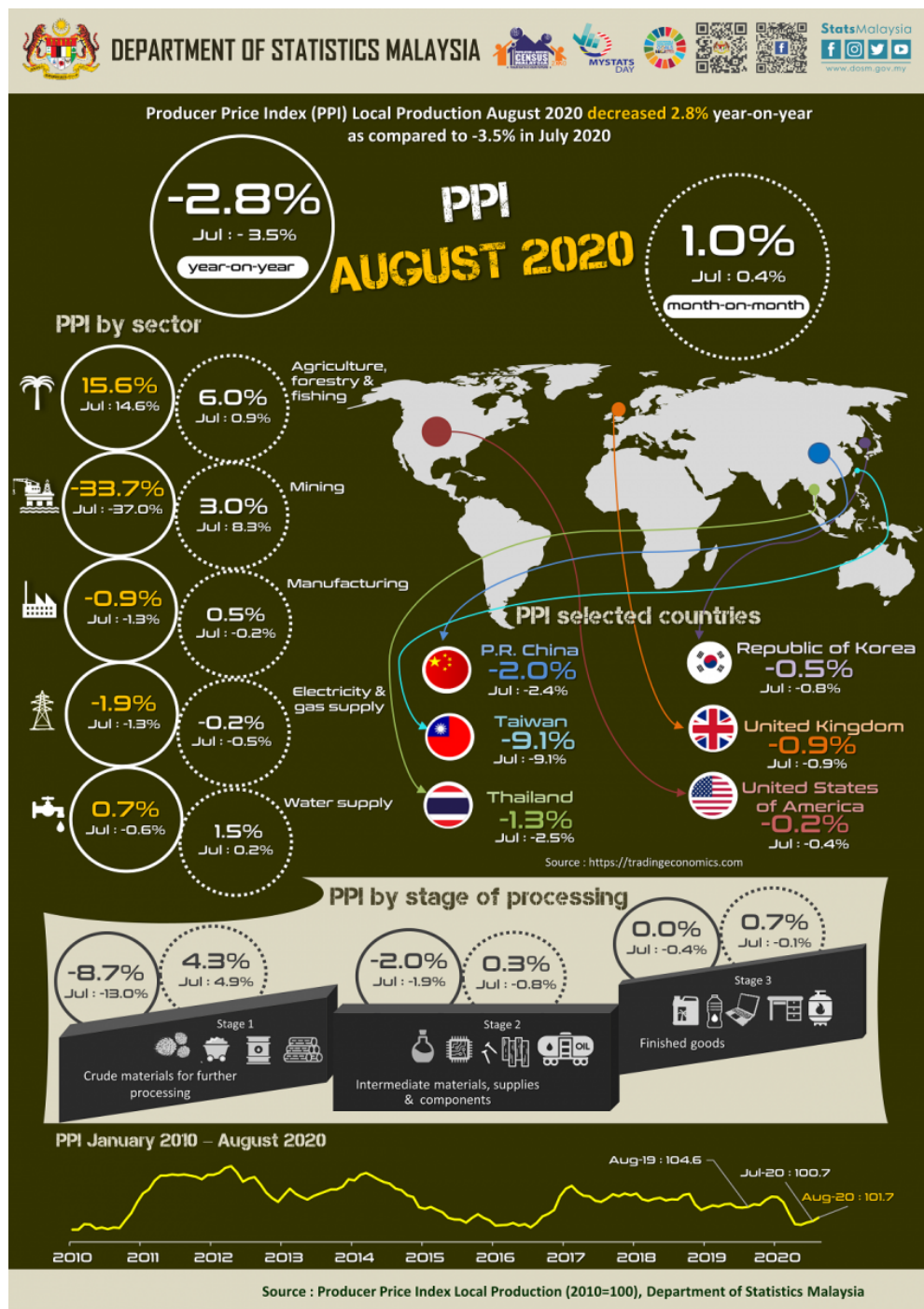




## PRODUCER PRICE INDEX MALAYSIA AUGUST 2020



### PRODUCER PRICE INDEX (2010=100) BY SECTOR (MSIC 2008)

Producer Price Index (PPI) local production is an output based index, which measure the average change in the price of commodities sold to the domestic market valued at the ex-factory price. Based on year-on-year comparison, PPI local production declined 2.8 per cent in August 2020 to 101.7 as against 104.6 in the same month of the preceding year. The decreased in the overall index was attributed by the decline in Mining (-33.7%), Electricity & gas supply (-1.9%) and Manufacturing (-0.9%). Conversely, the index of Agriculture, forestry & fishing and Water supply rose 15.6 per cent and 0.7 per cent respectively.

On a monthly basis, the PPI local production rose 1.0 per cent in August 2020. The increase was supported by the index of Agriculture, forestry & fishing (6.0%), Mining (3.0%), Water supply (1.5%) and Manufacturing (0.5%). On the other hand, the index of Electricity & gas supply declined 0.2 per cent. PPI local production for the period of January-August 2020 registered a decrease of 2.4 per cent as compared to -2.3 per cent in the same period of the previous year.

**Table 1 : Producer Price Index (2010=100) Local Production by Sector (MSIC 2008), Malaysia**

			Index	Percentage Change					
				Year-on-Year			Month-on-Month		
Sector	Code	Weights	Aug 2020	June 2020/ June 2019	Jul 2020/ Jul 2019	Aug 2020/ Aug 2019	June 2020/ May 2020	Jul 2020/ June 2020	Aug 2020/ Jul 2020
<b>Total</b>		<b>100.000</b>	<b>101.7</b>	<b>-4.0</b>	<b>-3.5</b>	<b>-2.8</b>	<b>0.6</b>	<b>0.4</b>	<b>1.0</b>
Agriculture, forestry & fishing	A	6.730	110.7	15.1	14.6	15.6	10.3	0.9	6.0
Mining	B	7.927	64.5	-42.5	-37.0	-33.7	10.9	8.3	3.0
Manufacturing	C	81.571	104.8	-1.2	-1.3	-0.9	-0.8	-0.2	0.5
Electricity & gas supply	D	3.442	116.3	-0.6	-1.3	-1.9	-0.6	-0.5	-0.2
Water supply	E	0.330	112.4	-1.2	-0.6	0.7	-0.3	0.2	1.5

## PRODUCER PRICE INDEX BY STAGE OF PROCESSING

As compared with the same month a year ago, the PPI local production by stage of processing (SOP) dropped 2.8 per cent in August 2020. Lower prices were recorded by two stages of processing that is Crude materials for further processing and intermediate materials, supplies & components which decreased by 8.7 per cent and 2.0 per cent respectively. However, Finished goods remained unchanged.

As compared to the previous month, the increase of 0.1 per cent in PPI local production by SOP was the result of positive changes in the indices for all stage of processing. The index for Crude materials for further processing rose 4.3 per cent, followed by Finished goods 0.7 per cent and Intermediate materials, supplies & components 0.3 per cent.

**Table 2 : Producer Price Index (2010=100), Local Production by Stage of Processing**

			Index	Percentage Change					
				Year-on-Year			Month-on-Month		
Stage of Processing	Code	Weights	Aug 2020	June 2020/ June 2019	Jul 2020/ Jul 2019	Aug 2020/ Aug 2019	June 2020/ May 2020	Jul 2020/ June 2020	Aug 2020/ Jul 2020
<b>Total</b>		<b>100.000</b>	<b>101.7</b>	<b>-4.0</b>	<b>-3.5</b>	<b>-2.8</b>	<b>0.6</b>	<b>0.4</b>	<b>1.0</b>
Crude materials for further processing	1	16.410	94.1	-17.6	-13.0	-8.7	8.0	4.9	4.3
Intermediate materials, supplies and components	2	56.119	104.2	-1.0	-1.9	-2.0	-0.9	-0.8	0.3
Finished goods	3	27.471	101.8	-0.3	-0.4	0.0	-0.1	-0.1	0.7

**Released by:**

**DATO' SRI DR. MOHD UZIR MAHIDIN**  
**CHIEF STATISTICIAN MALAYSIA**  
**DEPARTMENT OF STATISTICS, MALAYSIA**

 [DrUzir\\_Mahidin](#)   [Dr\\_Uzir](#)

#myHariBulan# #myBulan# #myTahun#

**Contact person:**

Mohd Yusrizal Ab Razak  
 Public Relation Officer  
 Strategic Communication and International Division  
 Department of Statistics, Malaysia  
 Tel : +603-8885 7942  
 Fax : +603-8888 9248  
 Email : yusrizal.razak[at]dosm.gov.my

**Contact person:**

Baharudin Mohamad  
Public Relation Officer  
Strategic Communication and International Division  
Department of Statistics Malaysia  
Tel : +603-8090 4681  
Fax : +603-8888 9248  
Email : baharudin[at]dosm.gov.my

**Copyright ©2025 Department of Statistics Malaysia Official Portal. All Rights Reserved.**