

**EMBARGO:** Only to be published or disseminated at **12:00 hour, Wednesday, 21 February 2024**



---

PERSON WITH DISABILITY STATISTICS, MALAYSIA, 2022

---



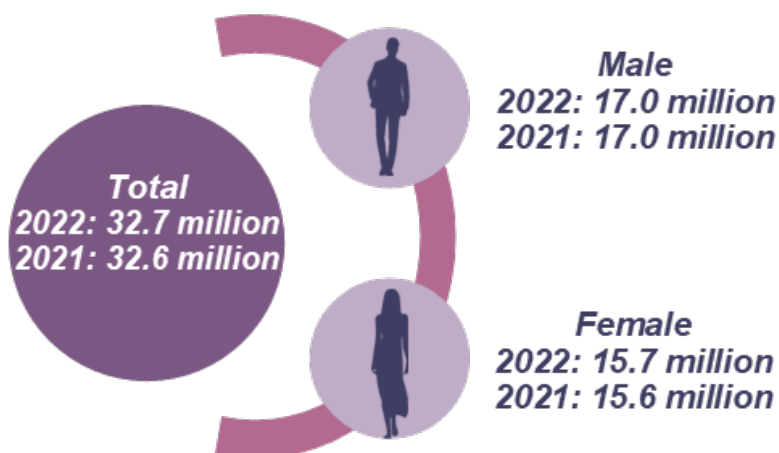
## INTRODUCTION

This publication covers six areas related to person with disability (PWD) namely population, health, education, employment, income and expenditure as well as welfare services. The statistics are based on survey and administrative data obtained from various agencies. Person With Disability Statistics, Malaysia, 2022 is the first publication on disability statistics published by Department of Statistics Malaysia (DOSM).

## POPULATION

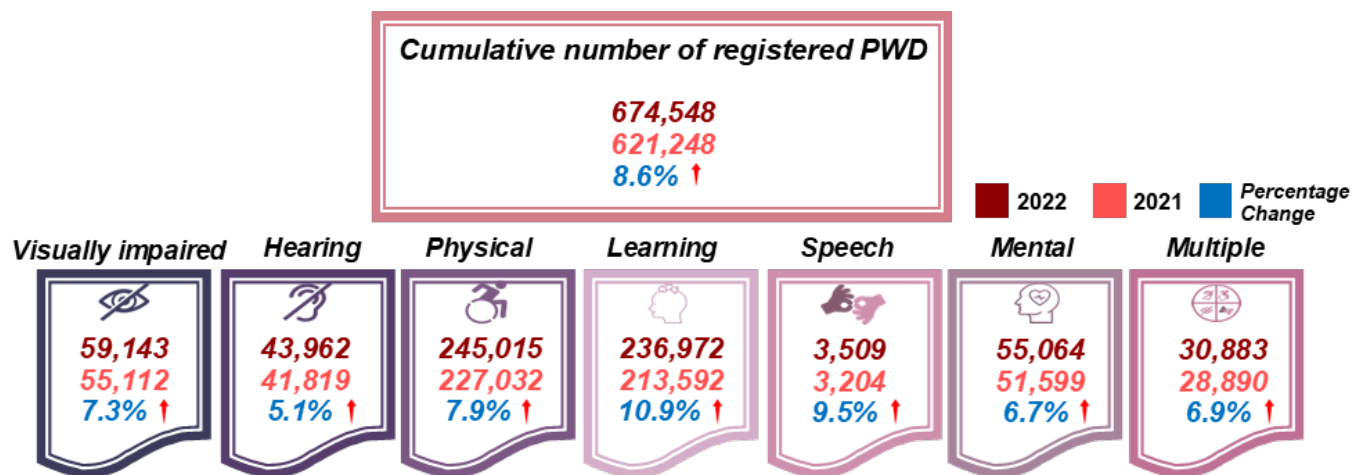
Malaysia's population in 2022 is estimated at 32.7 million, an increase of 0.1 million as compared to 2021. From this total, 17.0 million (52.1%) were males, while 15.7 million (47.9%) females. The cumulative number of registered PWD in the Department of Social Welfare (JKM) as at 2022 was 674,548 persons which is 2.0 per cent of Malaysia's population. The physical disability category recorded the highest registration of 245,015 persons, followed by learning disability category (236,972 persons) and the visually impaired (59,143 persons). Speech recorded the lowest registration of 3,509 persons.

Exhibit 1: Population by sex, Malaysia, 2021 and 2022



Source: Department of Statistics Malaysia

Exhibit 2: Cumulative number of registered PWD by category of disabilities, Malaysia, 2021 and 2022



Source: Department of Social Welfare

## HEALTH

The number of PWD who received health treatment increased from 2,580 persons in 2021 to 3,940 persons in 2022. The learning category recorded the highest number of people who received health treatment, which was 81.3 per cent for a total of 3,202 in 2022.

Table 1: Number of PWD receiving health treatment by category of disabilities, Malaysia, 2021 and 2022

Year	Total	Visually impaired	Hearing	Physical	Learning	Speech	Mental	Multiple
2022	3,940	37	59	430	3,202	204	8	-
2021	2,580	27	63	334	2,029	118	9	-

Source: Ministry of Health Malaysia

## EDUCATION

The number of pupils in special education schools at the primary level in 2022 increased by 1.1 per cent to 1,477 as compared to 1,461 (2021). The number of students in special education schools at the secondary level showed a decrease of 2.0 per cent to 1,046 as compared to 1,067 in the same period. The total number of teachers in special education schools at primary and secondary levels decreased from 835 teachers (2021) to 834 teachers (2022) for primary schools and 475 teachers (2021) to 462 teachers (2022) for secondary schools.

Table 2: The number of teachers and pupils in government and government-aided special education schools, Malaysia, 2021 and 2022



	<i>Primary schools</i>		<i>Secondary schools</i>	
	<b>2021</b>	<b>2022</b>	<b>2021</b>	<b>2022</b>
<b>Schools</b>	28	28	6	6
<b>Teachers</b>	835	834	475	462
<b>Pupils</b>	1,461	1,477	1,067	1,046

Source: Ministry of Education Malaysia

## WELFARE SERVICES

Among the main assistances provided by JKM are PWD worker allowance, assistance for PWD's incapable of work, assistance for the care of the bedridden PWD/ chronically ill patients and artificial/ assistive devices. The highest number and total assistance provided by JKM is the PWD worker allowance with 97,915 recipients and total assistance of RM517,704 thousand in 2022 as compared to 93,331 recipients and total assistance of RM495,289 thousand in the previous year.

Table 3: Number of recipients and total assistances for PWD by type of assistance, Malaysia, 2021 and 2022

	<b>2021</b>		<b>2022</b>	
	<i>Number of recipients</i>	<i>Total assistances (RM'000)</i>	<i>Number of recipients</i>	<i>Total assistances (RM'000)</i>
<b>PWD worker allowance</b>	93,331	495,289	97,915	517,704
<b>Assistance for PWD's incapable of work</b>	85,478	229,217	94,064	325,145
<b>Assistance for the care of the bedridden PWD/ chronically ill patients</b>	26,582	157,101	27,192	160,258
<b>Artificial/ assistive devices</b>	1,256	2,838	1,690	3,030

Source: Department of Social Welfare

**Contact person:**  
Baharudin Mohamad

Public Relation Officer  
Strategic Communication and International Division  
Department of Statistics Malaysia  
Tel : +603-8090 4681  
Fax : +603-8888 9248  
Email : baharudin[at]dosm.gov.my

**Copyright ©2026 Department of Statistics Malaysia Official Portal. All Rights Reserved.**