



MONTHLY RUBBER STATISTICS MALAYSIA, SEPTEMBER 2016

Natural Rubber (NR) production fell by 3.2 per cent in September 2016

Natural rubber (NR) production decreased by **3.2** per cent in September 2016 to **57,751** tonnes as compared to August 2016. The main contributor to NR production is from the smallholding sector at **91.2** per cent.

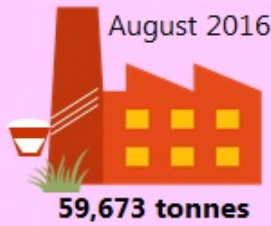
Average monthly price of Latex Concentrate was **456.13** sen per kilogramme, rose by **17.15** sen per kilogramme from August 2016. Meanwhile, Standard Malaysian Rubber 20 went up by **35.98** sen per kilogramme to **550.98** sen per kilogramme.

Exports of NR in September 2016 recorded at **55,036** tonnes, **18.2** per cent higher than the previous month. Five main destinations of NR exports were China, Germany, Iran, U.S.A. and Finland.

Domestic consumption of NR declined by **4.3** per cent to **38,760** tonnes over the same period. Rubber gloves industry remain as main domestic consumption of **73.6** per cent.

Level of NR stocks at the end of September 2016 reduced by **2.3** per cent to **165,246** tonnes.

Natural Rubber (NR) production fell by 3.2 per cent in September 2016



The smallholding sector dominates the production of natural rubber with a contribution of **91.2%**.

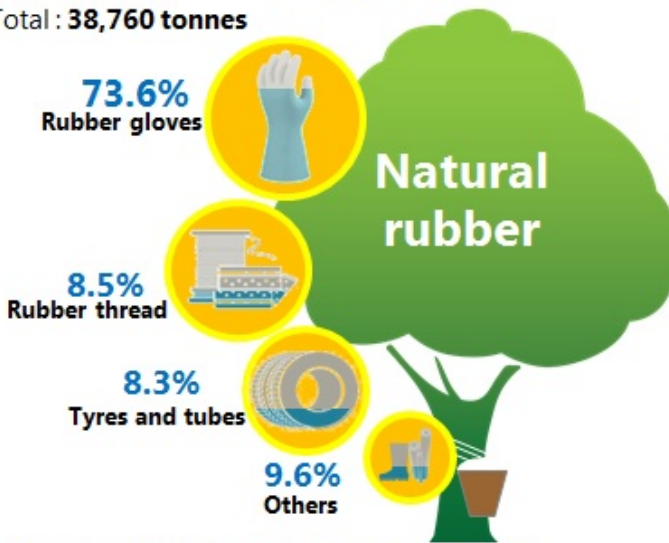


Latex Concentrate: 3.9%
S.M.R.20: 7.0%



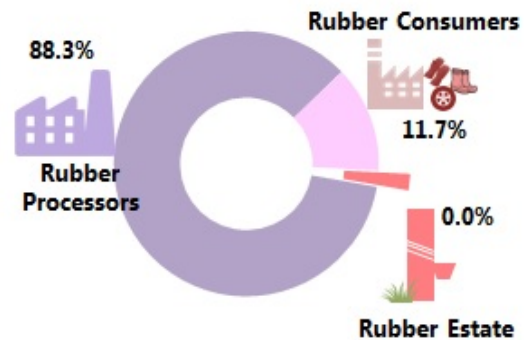
Domestic Consumption

Total: **38,760 tonnes**



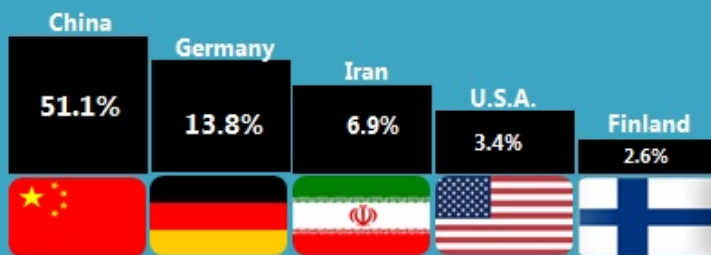
More than 70% domestic consumption of NR from the rubber gloves industry.

Stocks



Sept. 2016: **165,246 tonnes**
August 2016: **169,100 tonnes**

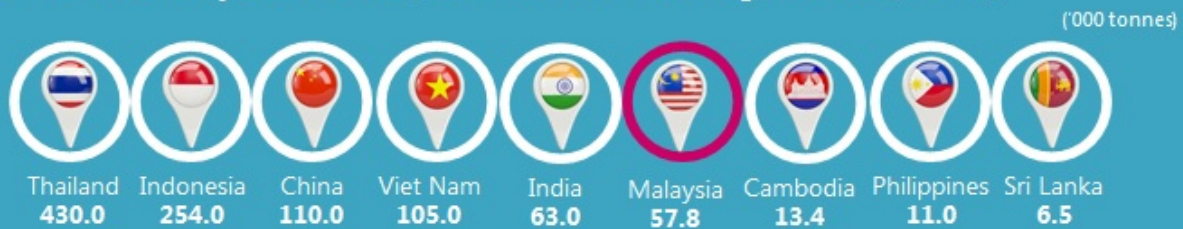
Exports



Exports of NR increased by **18.2%** as compared to August 2016.
The main destination of NR exports was China.

Total exports: **55,036 tonnes**

Production of NR by Association of Natural Rubber Producing Countries (ANRPC)



Source: Ministry of Plantation Industries and Commodities

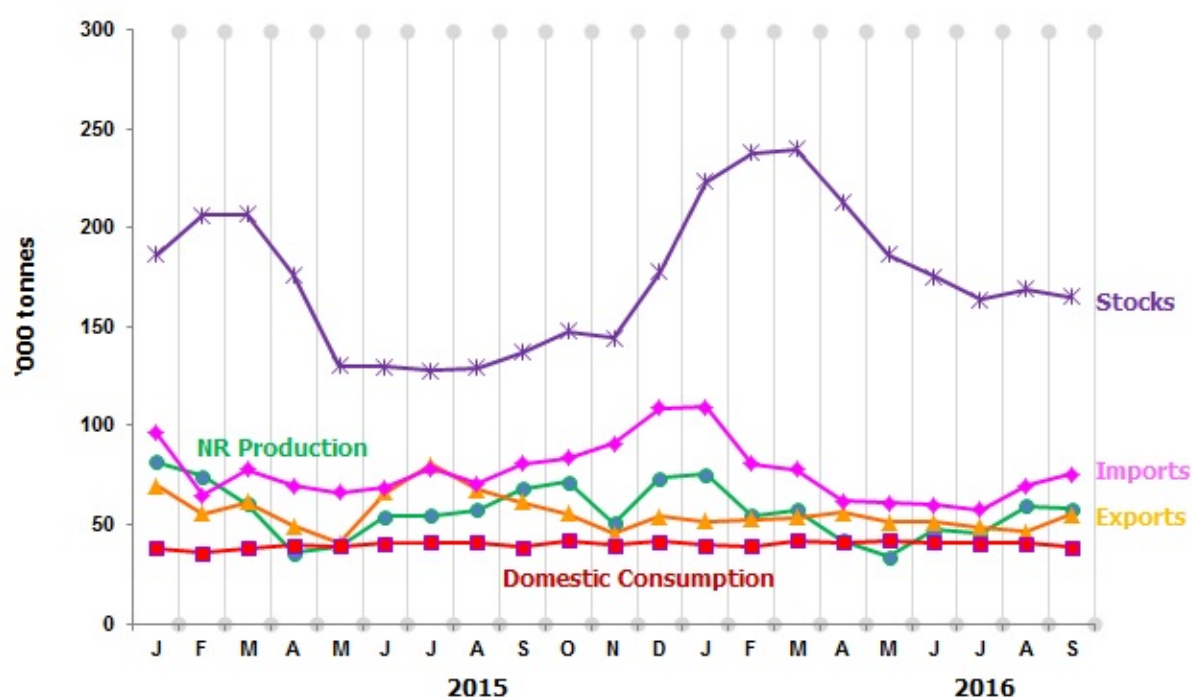
Source: Monthly Rubber Statistics Malaysia, September 2016, Department of Statistics, Malaysia

Table 1 presents the principal statistics of rubber for September 2016 while Chart 1 shows the monthly time series.

Table 1: Principal Statistics of rubber, September 2016

Principal Statistics	September 2016	August 2016	September 2015	Change month-on-month (%)	Change year-on-year (%)
Production (tonnes)	57,751	59,673	68,260	-3.2	-15.4
Exports (tonnes)	55,036	46,548	61,231	18.2	-10.1
Imports (tonnes)	75,661	69,928	80,865	8.2	-6.4
Domestic consumption (tonnes)	38,760	40,522	38,679	-4.3	0.2
Closing stocks (tonnes)	165,246	169,100	137,176	-2.3	20.5
Number of paid workers (estate)	10,365	10,671	11,936	-2.9	-13.2
Salaries & wages (RM'000) (estate)	13,970	15,595	15,608	-10.4	-10.5

Chart 1: Monthly production, exports, imports, domestic consumption and stocks of natural rubber 2015/2016



*Notes:

Data for September 2016 is **provisional**. The data will be updated based on the latest available figures and subsequently published in the October 2016 publication.

Released By:

**THE OFFICE OF CHIEF STATISTICIAN MALAYSIA
DEPARTMENT OF STATISTICS, MALAYSIA
#myHariBulan# #myBulan# #myTahun#**

Contact person:

Ho Mei Kei
Public Relation Officer
Corporate and User Services Division
Department of Statistics, Malaysia
Tel : +603-8885 7942
Fax : +603-8888 9248
Email : mkho[at]stats.gov.my

Contact person:

Baharudin Mohamad
Public Relation Officer
Strategic Communication and International Division
Department of Statistics Malaysia
Tel : +603-8090 4681
Fax : +603-8888 9248
Email : baharudin[at]dosm.gov.my

Copyright ©2025 Department of Statistics Malaysia Official Portal. All Rights Reserved.