



MONTHLY RUBBER STATISTICS MALAYSIA, JANUARY 2017

Natural Rubber (NR) dropped by 4.1 per cent in January 2017

In January 2017, production of natural rubber dropped by **4.1** percent to **66,617** tonnes as compared to December 2016. Smallholding sector was the main contributor to the production of natural rubber which is **93.7** per cent.

Average monthly price of Latex Concentrate and Standard Malaysian Rubber 20 were **710.70** sen per kilogramme and **957.23** sen per kilogramme, increased by **15.4** per cent and **14.0** per cent respectively from the previous month.

Exports of NR in January 2017 decreased by **17.9** per cent to **50,410** tonnes as compared to December 2016. Five main destinations of NR exports were China, Germany, Iran, U.S.A. and Republic of Korea.

Meanwhile, domestic consumption of natural rubber declined by **2.5** per cent to **39,861** tonnes within the same period. The main domestic consumers of natural rubber is dominated by rubber gloves industry at **74.9** per cent.

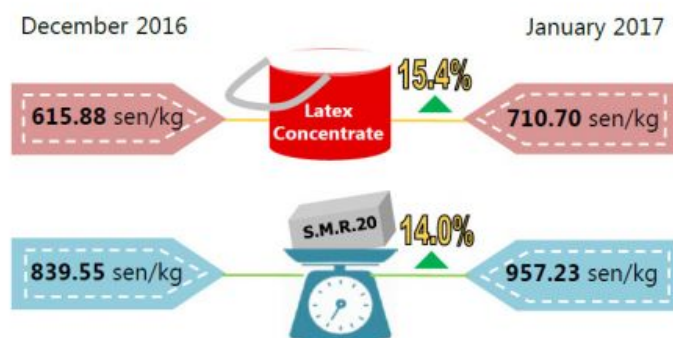
Level of NR stocks went up by **8.8** per cent to **221,376** tonnes at the end of January 2017.

Natural Rubber (NR) dropped by 4.1 per cent in January 2017

93.7% of NR production was from the smallholding sector.



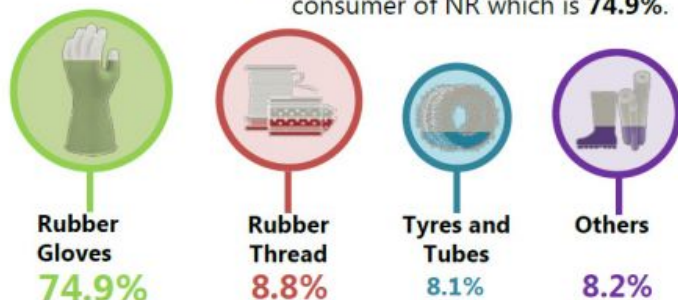
Average price



Domestic Consumption

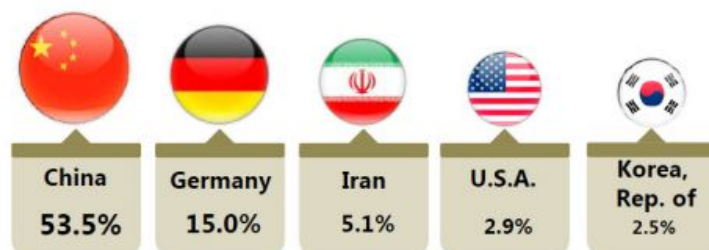
Total : 39,861 tonnes

Rubber gloves industry was the largest consumer of NR which is 74.9%.



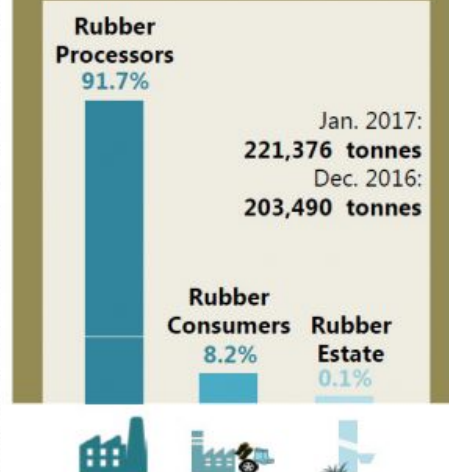
Exports

Exports of NR decreased by 17.9% as compared to December 2016. The main destination of NR exports was China.

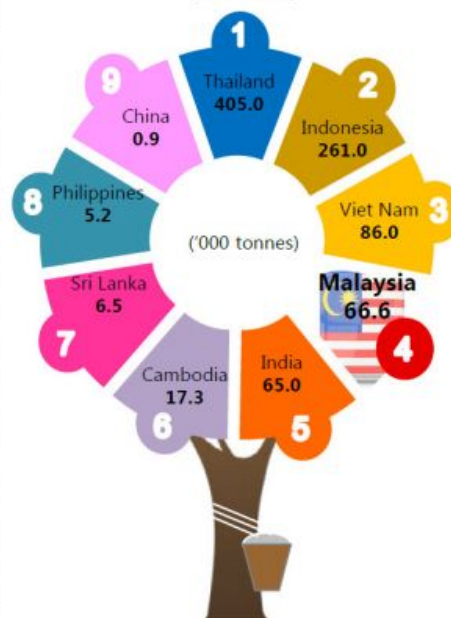


Total exports : 50,410 tonnes

Stocks



Production of NR by Association of Natural Rubber Producing Countries (ANRPC)



Source: Ministry of Plantation Industries and Commodities

Source: Monthly Rubber Statistics Malaysia, January 2017

Department of Statistics Malaysia
<https://www.dosm.gov.my>



<https://www.facebook.com/StatsMalaysia>



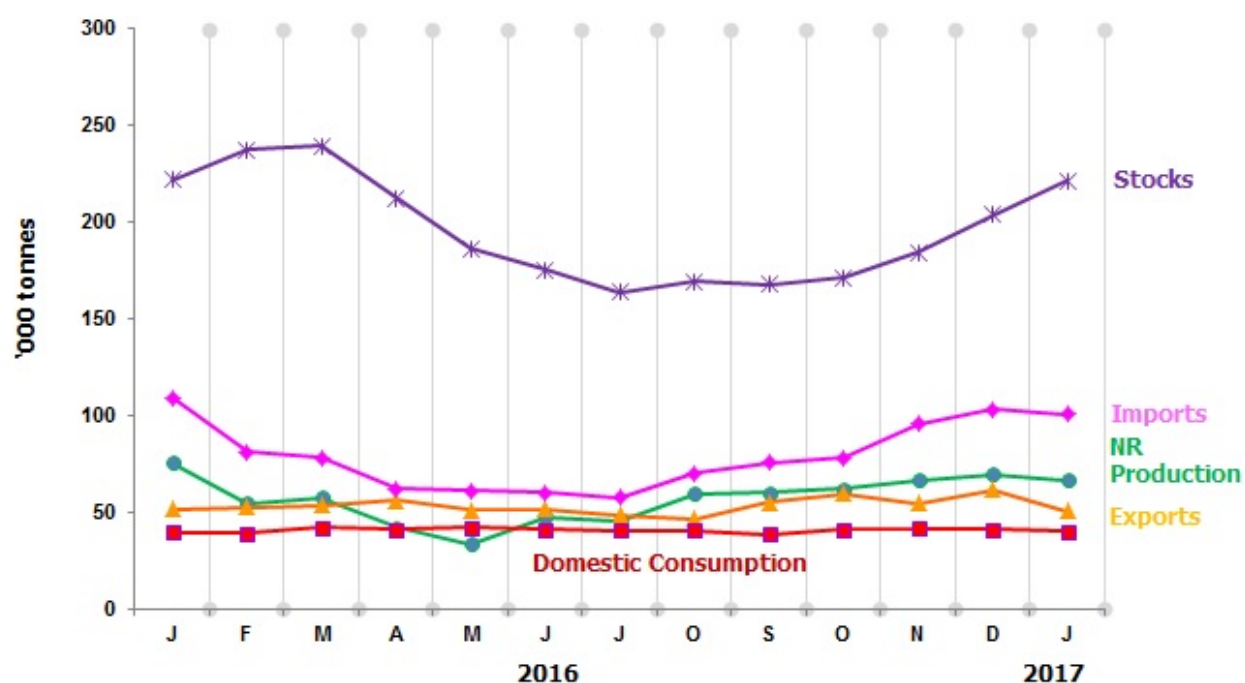
<https://twitter.com/StatsMalaysia>

Table 1 presents the principal statistics of rubber for January 2017 while Chart 1 shows the monthly time series from January 2016 to January 2017.

Table 1: Principal statistics of rubber, January 2017

Principal Statistics	January 2017	December 2016	January 2016	Change month-on-month (%)	Change year-on-year (%)
Production (tonnes)	66,617	69,435	75,448	-4.1	-11.7
Exports (tonnes)	50,410	61,380	51,503	-17.9	-2.1
Imports (tonnes)	100,488	103,125	109,244	-2.6	-8.0
Domestic consumption (tonnes)	39,861	40,873	39,530	-2.5	0.8
Closing stocks (tonnes)	221,376	203,490	221,848	8.8	-0.2
Number of paid workers (estate)	10,048	10,264	11,739	-2.1	-14.4
Salaries & wages (RM'000) (estate)	13,419	16,632	15,655	-19.3	-14.3

Chart 1: Monthly production, exports, imports, domestic consumption and stocks of natural rubber 2016/2017



*Notes:

Data for January 2017 is **provisional**. The data will be updated based on the latest available figures and subsequently published in the February 2017 publication.

Released By:

**THE OFFICE OF CHIEF STATISTICIAN MALAYSIA
DEPARTMENT OF STATISTICS, MALAYSIA
#myHariBulan# #myBulan# #myTahun#**

Contact person:

Ho Mei Kei
Public Relation Officer
Corporate and User Services Division
Department of Statistics, Malaysia
Tel : +603-8885 7942
Fax : +603-8888 9248
Email : mkho[at]stats.gov.my

Contact person:

Baharudin Mohamad
Public Relation Officer
Strategic Communication and International Division
Department of Statistics Malaysia
Tel : +603-8090 4681
Fax : +603-8888 9248
Email : baharudin[at]dosm.gov.my

Copyright ©2026 Department of Statistics Malaysia Official Portal. All Rights Reserved.