



---

## MONTHLY RUBBER STATISTICS MALAYSIA, FEBRUARY 2018

---

### **Natural rubber in February 2018 gained 14.9 per cent**

Natural rubber production increased by **14.9** per cent in February 2018 to **63,246** tonnes as compared to January 2018. Meanwhile for year-on-year production decreased by **28.7** per cent.

Average monthly price of Latex Concentrate and Standard Malaysian Rubber 20 (S.M.R 20) in February 2018 were **456.69** sen per kilogramme and **563.14** sen per kilogramme, decreased by **3.8** per cent and **4.2** per cent respectively as compared to January 2018.

Exports of natural rubber in February 2018 was recorded at **49,627** tonnes, gained by **5.8** per cent than the previous month. Five main destinations of natural rubber exports were China, Germany, Iran, Finland and U.S.A.

Domestic consumption of natural rubber shrunk by **10.5** per cent to **39,586** tonnes in February 2018 as compared to the previous month. The main industry using natural rubber was rubber glove industry at **29,654** tonnes (**74.9%**).

Meanwhile, in terms of stocks, the level of natural rubber stocks increased by **11.4** per cent to **285,616** tonnes at the end of February 2018.



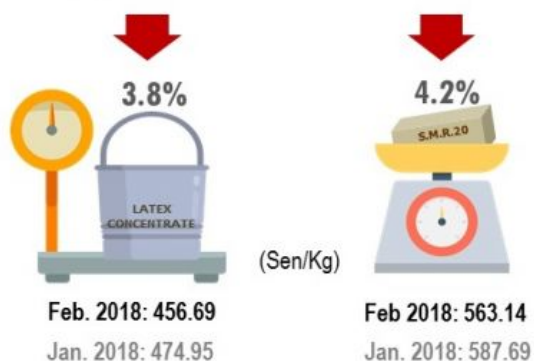
## Production

Production of natural rubber increased **14.9%** in February 2018.



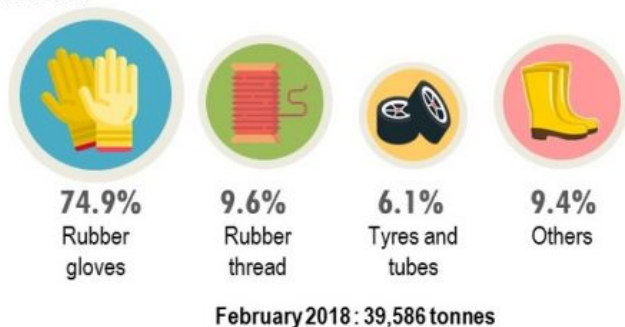
**91.4%** of natural rubber production was from the smallholding sector.

## Average price

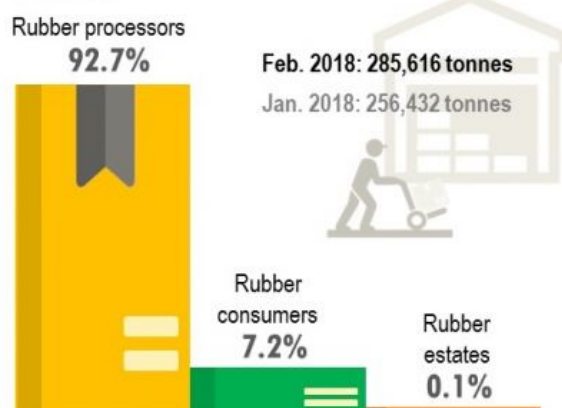


## Domestic consumption

Rubber gloves industry was the main consumer of natural rubber which is **74.9%**.

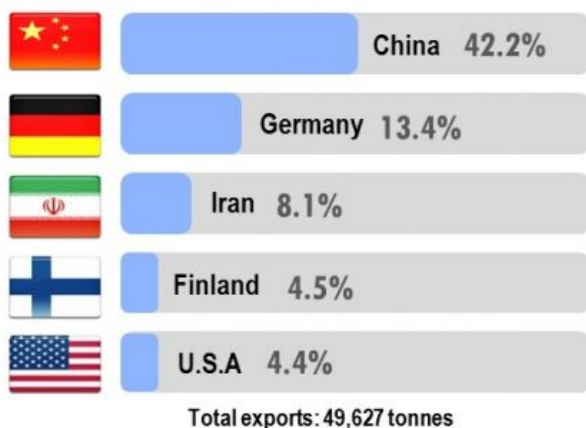


## Stocks



## Exports

Exports of natural rubber increased by **5.8%** as compared to January 2018. The main destination of natural rubber exports was China.



## Production of Natural Rubber by Association of Natural Rubber Producing Countries (ANRPC), February 2018

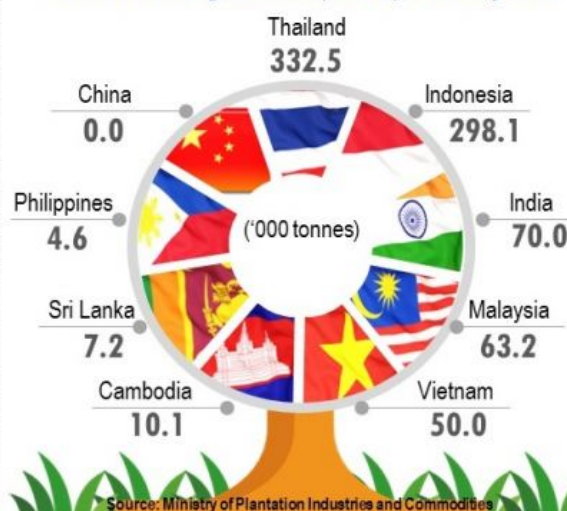
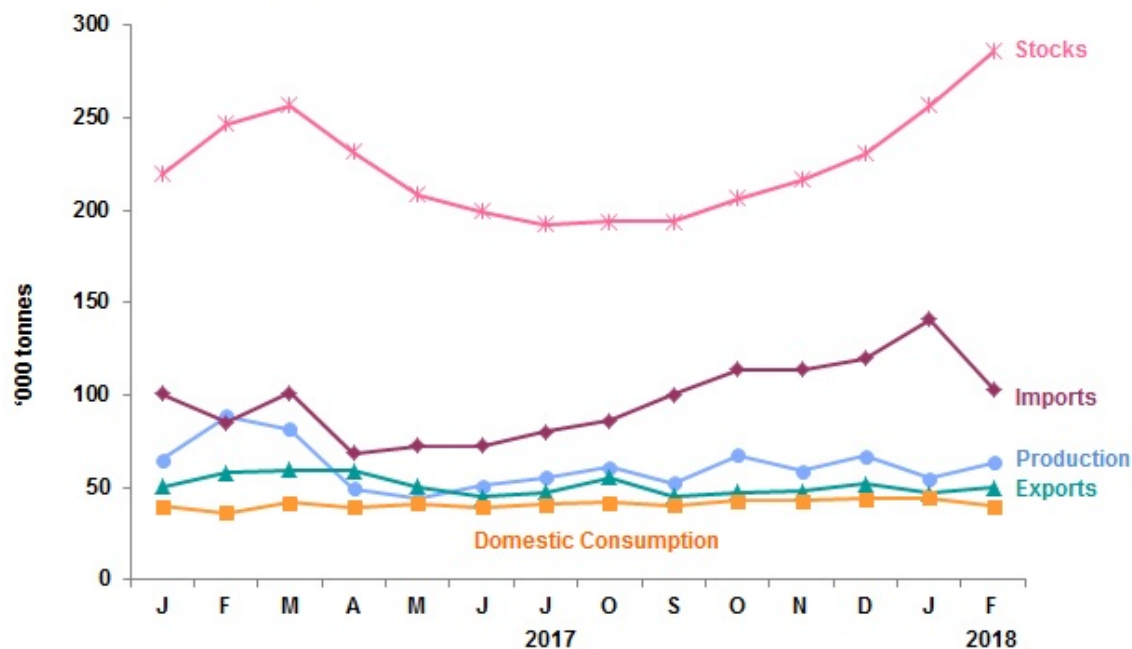


Table 1 presents the principal statistics of rubber for February 2018 while Chart 1 shows the monthly time series from February 2017 to February 2018.

**Table 1: Principal statistics of rubber, February 2018**

Principal Statistics	February 2017	January 2018	February 2018	Change month-on-month February 2018/ January 2018 (%)	Change year-on-year February 2018/ February 2017 (%)
Production (tonnes)	88,698	55,039	63,246	14.9	-28.7
Exports (tonnes)	57,959	46,928	49,627	5.8	-14.4
Imports (tonnes)	84,787	140,670	103,338	-26.5	21.9
Domestic consumption (tonnes)	36,279	44,241	39,586	-10.5	9.1
Closing stocks (tonnes)	246,583	256,432	285,616	11.4	15.8
Number of paid workers (estate)	9,966	10,708	10,448	-2.4	4.8
Salaries & wages (estate) (RM'000)	13,898	14,422	15,183	5.3	9.2

**Chart 1: Monthly production, exports, imports, domestic consumption and stocks of natural rubber 2017/2018**



\*Notes:

Data for February 2018 is **provisional**.

The data will be updated based on the latest available figures and subsequently published in the March 2018 publication.

**Released By:**

**THE OFFICE OF CHIEF STATISTICIAN MALAYSIA  
DEPARTMENT OF STATISTICS, MALAYSIA**



**DrUzir\_Mahidin**



**Dr\_Uzir**

**#myHariBulan# #myBulan# #myTahun#**

**Contact person:**

Ho Mei Kei

Public Relation Officer

Strategic Communication and International Division

Department of Statistics, Malaysia

**Tel :** +603-8885 7942

**Fax :** +603-8888 9248

**Email :** mkho[at]dosm.gov.my

**Contact person:**

Baharudin Mohamad

Public Relation Officer

Strategic Communication and International Division

Department of Statistics Malaysia

Tel : +603-8090 4681

Fax : +603-8888 9248

Email : baharudin[at]dosm.gov.my

**Copyright ©2025 Department of Statistics Malaysia Official Portal. All Rights Reserved.**