



---

## MONTHLY RUBBER STATISTICS MALAYSIA, DECEMBER 2017

---

### **Production of natural rubber gained 14.3 per cent in December 2017**

Natural rubber (NR) production gained by **14.3** per cent in December 2017 to **67,125** tonnes as compared to November 2017. Smallholding sector remained as the main contributor of NR production which is more than **90** per cent.

Average monthly price of Latex Concentrate and Standard Malaysian Rubber 20 (S.M.R 20) in December 2017 were **473.11** sen per kilogramme and **580.79** sen per kilogramme, decreased by **0.4** per cent and **0.1** per cent respectively as compared to November 2017.

Exports of NR in December 2017 was recorded at **51,995** tonnes, increased by **9.3** per cent than the previous month. Five main destinations of NR exports were China, Germany, Iran, U.S.A. and Finland.

Domestic consumption of NR in December 2017 rose by **2.7** per cent to **43,617** tonnes as compared to the previous month. The largest industry using NR was rubber glove industry at **32,169** tonnes (**73.8%**).

Meanwhile in terms of stocks, the level of NR stocks increased by **6.4** per cent to **230,315** tonnes at the end of December 2017.



## Production of natural rubber gained 14.3 per cent in December 2017

92.4% of NR production was from the smallholding sector.

November 2017



58,733 tonnes

December 2017



67,125 tonnes

## Average price



## Domestic consumption

Total : 43,617 tonnes

Rubber gloves industry was the largest consumer of NR which is 73.8%.



Rubber  
Gloves

73.8%



Rubber  
Thread

10.2%



Tyres and  
Tubes

5.9%

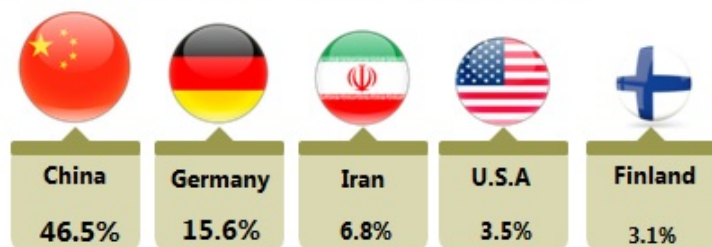


Others

10.1%

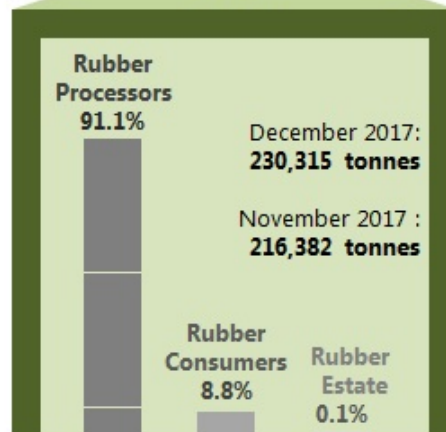
## Exports

Exports of NR increased by 9.3% as compared to November 2017. The main destination of NR exports was China.

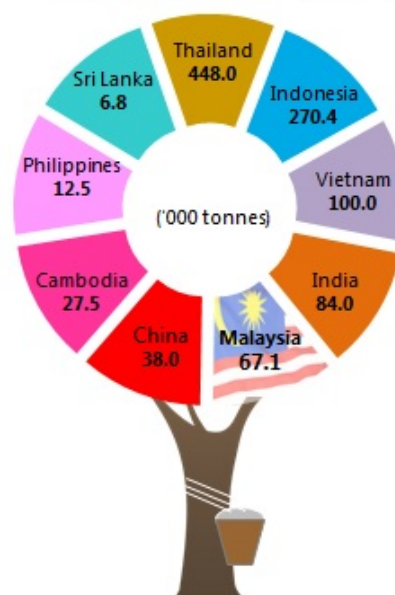


Total exports : 51,995 tonnes

## Stocks



## Production of Natural Rubber by Association of Natural Rubber Producing Countries (ANRPC)



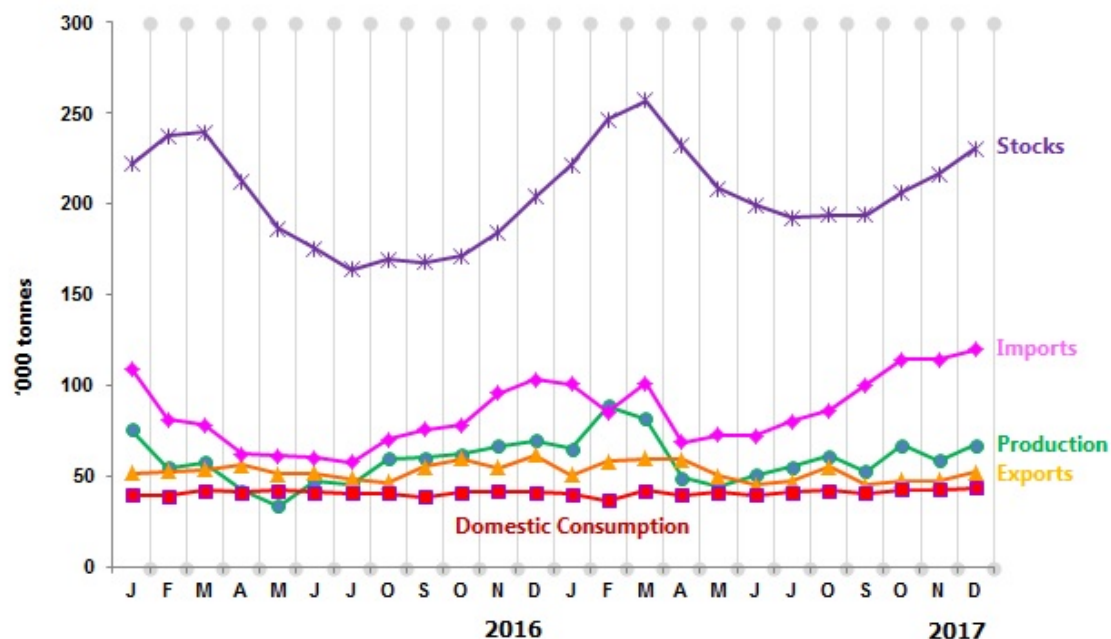
Source: Ministry of Plantation Industries and Commodities

Table 1 presents the principal statistics of rubber for December 2017 while Chart 1 shows the monthly time series from December 2016 to December 2017.

Table 1: Principal statistics of rubber, December 2017

Principal Statistics	December 2016	November 2017	December 2017	Change month-on-month December 2017/November 2017 (%)	Change year-on-year December 2017/December 2016 (%)
Production (tonnes)	69,435	58,733	67,125	14.3	-3.3
Exports (tonnes)	61,380	47,589	51,995	9.3	-15.3
Imports (tonnes)	103,125	113,942	119,637	5.0	16.0
Domestic consumption (tonnes)	40,873	42,484	43,617	2.7	6.7
Closing stocks (tonnes)	203,490	216,382	230,315	6.4	13.2
Number of paidworkers (estate)	10,264	10,038	10,297	2.6	0.3
Salaries & wages (RM'000) (estate)	16,632	13,003	16,570	27.4	-0.4

Chart 1: Monthly production, exports, imports, domestic consumption and stocks of natural rubber 2016/2017



\*Notes:

Data for December 2017 is **provisional**.

The data will be updated based on the latest available figures and subsequently published in the January 2018 publication.

**Released By:**

**THE OFFICE OF CHIEF STATISTICIAN MALAYSIA**

**DEPARTMENT OF STATISTICS, MALAYSIA**

**#myHariBulan# #myBulan# #myTahun#**

**Contact person:**

Ho Mei Kei

Public Relation Officer

Strategic Communication and International Division

Department of Statistics, Malaysia

**Tel :** +603-8885 7942

**Fax :** +603-8888 9248

**Email :** mkho[at]stats.gov.my

**Contact person:**

Baharudin Mohamad

Public Relation Officer

Strategic Communication and International Division

Department of Statistics Malaysia

**Tel :** +603-8090 4681

**Fax :** +603-8888 9248

**Email :** baharudin[at]dosm.gov.my

**Copyright ©2026 Department of Statistics Malaysia Official Portal. All Rights Reserved.**