

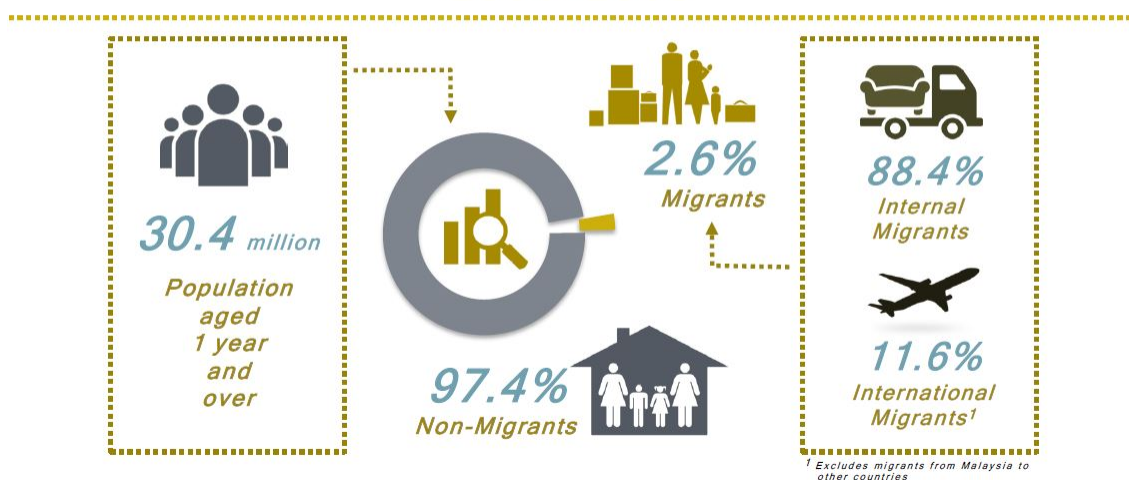


MIGRATION SURVEY REPORT, MALAYSIA, 2015

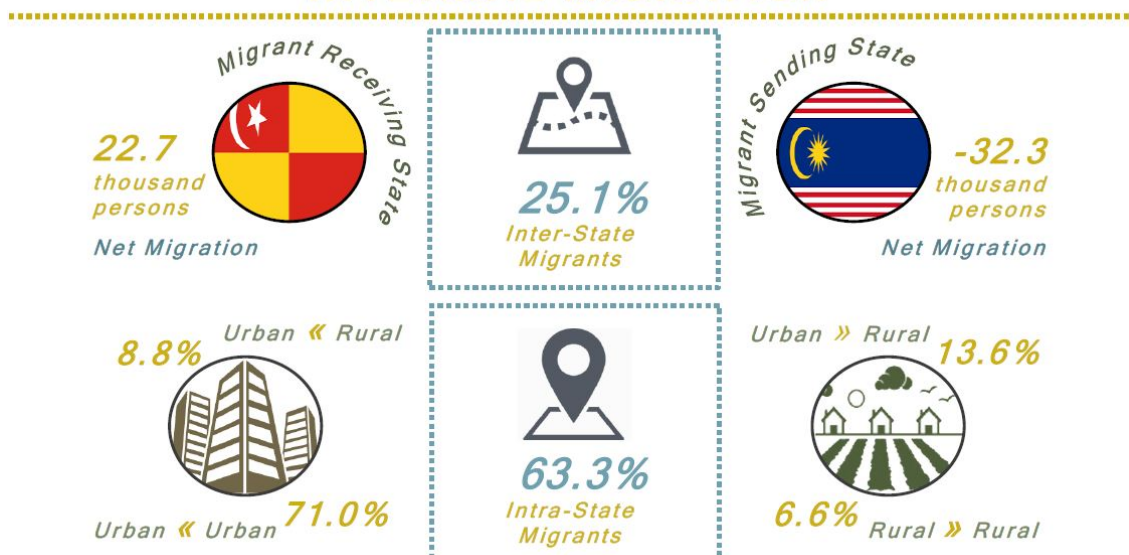
POPULATION'S MIGRATION IN MALAYSIA

For the period of 2014–2015, 2.6 per cent of the population aged 1 year and over were migrants. Nearly two-thirds or 63.3 per cent of the total number of migrants were intra-state migrants and inter-state migrants were 25.1 per cent. This indicates that migrants would rather move within the state instead of moving to another state. Meanwhile, international migrants who have moved from abroad to Malaysia were 11.6 per cent.

POPULATION'S MIGRATION IN MALAYSIA 2014–2015



INTERNAL MIGRATION



For inter-state movement, Selangor was the main receiving state of migrants while the main sending state of migrants was W.P. Kuala Lumpur. For intra-state movement, the majority of migrants at state level were also focused to urban areas within the same state for the period of 2014–2015.

¹Excludes migrants from Malaysia to other countries

REASONS FOR MIGRATION

Moved to 'follow family' was a major factor of population's migration with a percentage exceeding 40.0 per cent for both periods. Besides, 'environment' and 'career' factors were also the main reasons for migration with the percentage of each exceeding 20.0 per cent.

REASONS FOR MIGRATION



The detailed information regarding this report can be accessed through [eStatistik](#) application in the portal of [Department of Statistics Malaysia](#).

Released By:

THE OFFICE OF CHIEF STATISTICIAN MALAYSIA
DEPARTMENT OF STATISTICS, MALAYSIA
#myHariBulan# #myBulan# #myTahun#

Contact person:

Ho Mei Kei
Public Relation Officer
Corporate and User Services Division
Department of Statistics, Malaysia
Tel : +603-8885 7942
Fax : +603-8888 9248
Email : mkho[at]stats.gov.my

Contact person:

Baharudin Mohamad
Public Relation Officer
Strategic Communication and International Division
Department of Statistics Malaysia
Tel : +603-8090 4681
Fax : +603-8888 9248
Email : baharudin[at]dosm.gov.my

Copyright ©2025 Department of Statistics Malaysia Official Portal. All Rights Reserved.