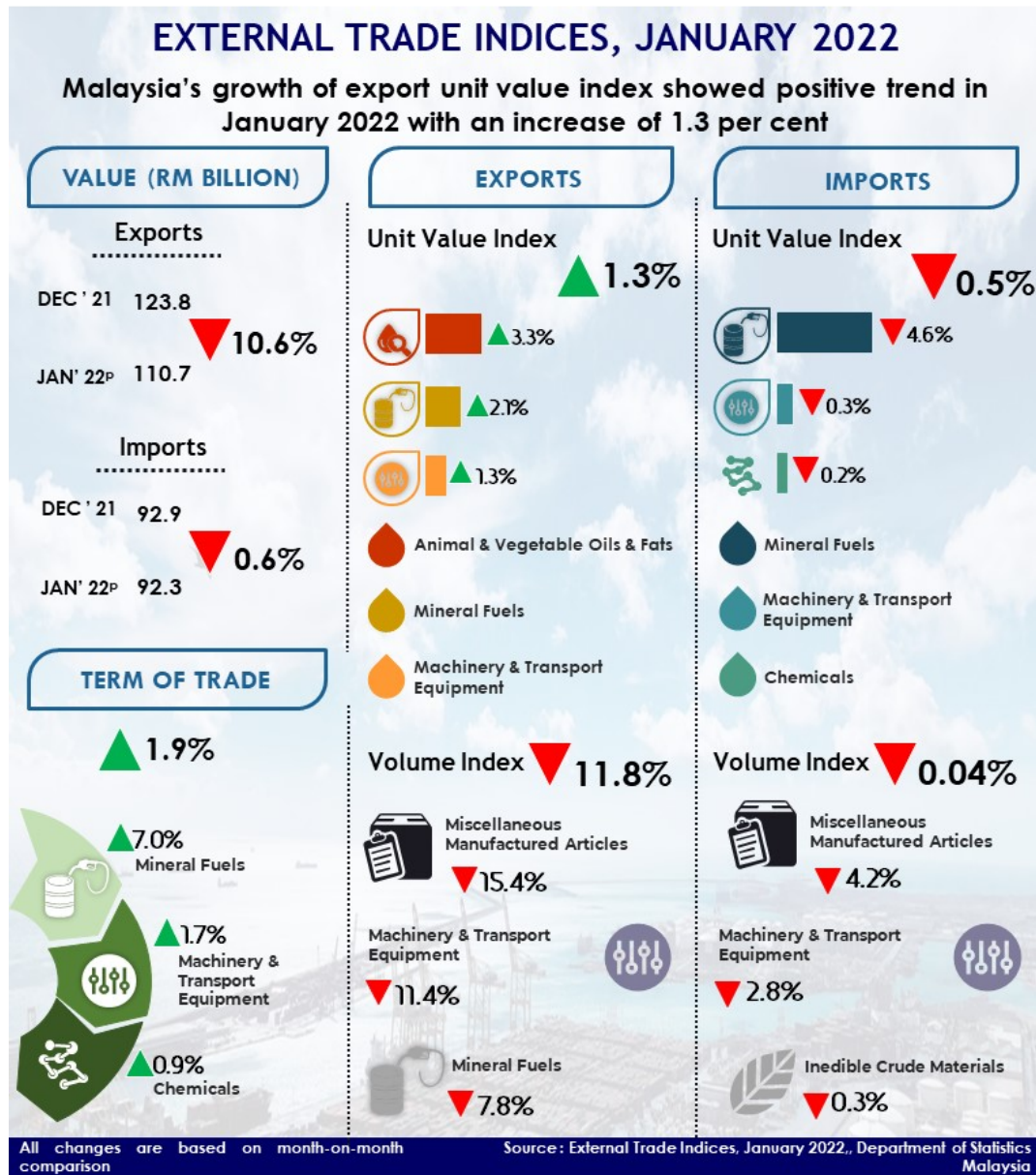




## MALAYSIA EXTERNAL TRADE INDICES, JANUARY 2022



## **Exports**

The **export unit value index** grew 1.3 per cent in January 2022 as compared with the previous month, supported by the increases in the index of animal & vegetable oils & fats (+3.3%), mineral fuels (+2.1%) and machinery & transport equipment (+1.3%). On the other hand, the **export volume index** fell 11.8 per cent in the same month, reflected by the deterioration in the index of miscellaneous manufactured articles (-15.4%), machinery & transport equipment (-11.4%) and mineral fuels (-7.8%). The seasonally adjusted **export volume index** grew 0.5 per cent from 154.4 points to 155.1 points.

On annual comparison, both **export unit value** and **volume index** grew 15.5 per cent and 7.0 per cent, respectively.

## **Imports**

The **import unit value index** dropped 0.5 per cent in January 2022 as compared with the previous month, attributed to the deterioration in the index of mineral fuels (-4.6%), machinery & transport equipment (-0.3%) and chemicals (-0.2%). Likewise, the **import volume index** fell by 0.04 per cent in January 2022 as compared to the preceding month, attributed to the deterioration in the index of miscellaneous manufactured articles (-4.2%), machinery & transport equipment (-2.8%) and inedible crude materials (-0.3%). The seasonally adjusted **import volume index** in January 2022 increased by 1.5 per cent from 166.8 points to 169.3 points.

On a year-on-year basis, both the **import unit value** and **volume indices** expanded 7.1 per cent and 18.1 per cent, respectively.

## **Terms of trade**

Malaysia's **terms of trade** increased by 1.9 per cent month-on-month to 109.1 points in January 2022. On a y-o-y basis, Malaysia's **terms of trade** performance showed positive growth of 7.9 per cent from 101.1 points in January of previous year.

The full publication of the External Trade Indices, January 2022 can be downloaded through [eStatistik](#) Portal.

For more details, please refer to the Department's portal: [www.dosm.gov.my](http://www.dosm.gov.my)

\*Notes:

The January 2022 data is provisional and subject to revision in later issues.

## **Released By:**

**DATO' SRI DR. MOHD UZIR MAHIDIN**  
**CHIEF STATISTICIAN MALAYSIA**  
**DEPARTMENT OF STATISTICS, MALAYSIA**

 [DrUzir\\_Mahidin](#)   [dr\\_uzir](#)

**4 MARCH 2022**

**Contact person:**

**Mohd Yusrizal Ab Razak**  
**Public Relation Officer**  
**Strategic Communication and International Division**  
**Department of Statistics, Malaysia**  
**Tel : +603-8885 7942**  
**Fax : +603-8888 9248**  
**E-mail : yusrizal.razak[at]dosm.gov.my**

**Contact person:**

Baharudin Mohamad  
Public Relation Officer  
Strategic Communication and International Division  
Department of Statistics Malaysia  
Tel : +603-8090 4681  
Fax : +603-8888 9248  
Email : baharudin[at]dosm.gov.my

**Copyright ©2025 Department of Statistics Malaysia Official Portal. All Rights Reserved.**