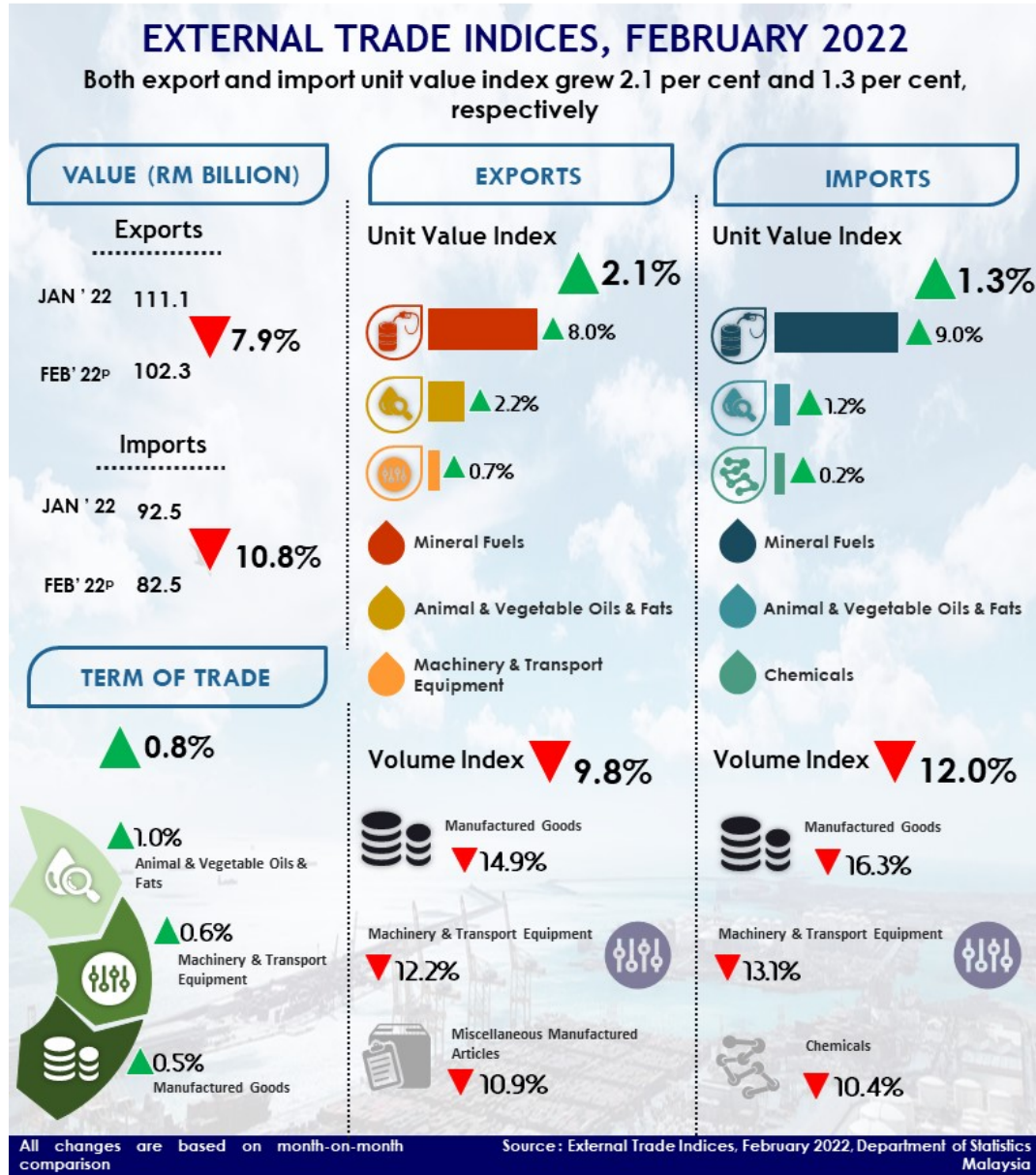




## MALAYSIA EXTERNAL TRADE INDICES, FEBRUARY 2022



## **Exports**

The **export unit value index** grew 2.1 per cent in February 2022 as compared with the previous month, supported by the increases in the index of mineral fuels (+8.0%), animal & vegetable oils & fats (+2.2%) and machinery & transport equipment (+0.7%). Meanwhile, the **export volume index** fell 9.8 per cent in the same month, reflected by the deterioration in the index of manufactured goods (-14.9%), machinery & transport equipment (-12.2%) and miscellaneous manufactured articles (-10.9%). The seasonally adjusted **export volume index** grew 2.8 per cent from 155.6 points to 160.0 points.

On annual comparison, both **export unit value** and **volume index** continued to expand 16.4 per cent and 0.3 per cent, respectively.

## **Imports**

The **import unit value index** grew 1.3 per cent in February 2022 as compared with the previous month, contributed by the improvement in index of mineral fuels (+9.0%), animal & vegetable oils & fats (+1.2%) and chemicals (+0.2%). However, the **import volume index** fell by 12.0 per cent in February 2022 as compared to the previous month, attributed to the deterioration in the index of manufactured goods (-16.3%), machinery & transport equipment (-13.1%) and chemicals (-10.4%). The seasonally adjusted **import volume index** in February 2022 increased by 0.4 per cent from 169.7 points to 170.3 points.

On a year-on-year basis, both the **import unit value** and **volume indices** expanded 7.5 per cent and 10.1 per cent, respectively.

## **Terms of trade**

Malaysia's **terms of trade** increased by 0.8 per cent month-on-month to 109.9 points in February 2022. On a y-o-y basis, Malaysia's **terms of trade** performance showed positive growth of 8.3 per cent from 101.5 points in February of previous year.

The full publication of the External Trade Indices, February 2022 can be downloaded through [eStatistik](#) Portal.

For more details, please refer to the Department's portal: [www.dosm.gov.my](http://www.dosm.gov.my)

\*Notes:

The February 2022 data is provisional and subject to revision in later issues.

## **Released By:**

**THE OFFICE OF CHIEF STATISTICIAN MALAYSIA  
DEPARTMENT OF STATISTICS, MALAYSIA**

**4 APRIL 2022**

## **Contact person:**

**Mohd Yusrizal Ab Razak**

**Public Relation Officer**  
**Strategic Communication and International Division**  
**Department of Statistics, Malaysia**  
**Tel : +603-8885 7942**  
**Fax : +603-8888 9248**  
**E-mail : yusrizal.razak[at]dosm.gov.my**

**Contact person:**

Baharudin Mohamad  
Public Relation Officer  
Strategic Communication and International Division  
Department of Statistics Malaysia  
Tel : +603-8090 4681  
Fax : +603-8888 9248  
Email : baharudin[at]dosm.gov.my

**Copyright ©2025 Department of Statistics Malaysia Official Portal. All Rights Reserved.**