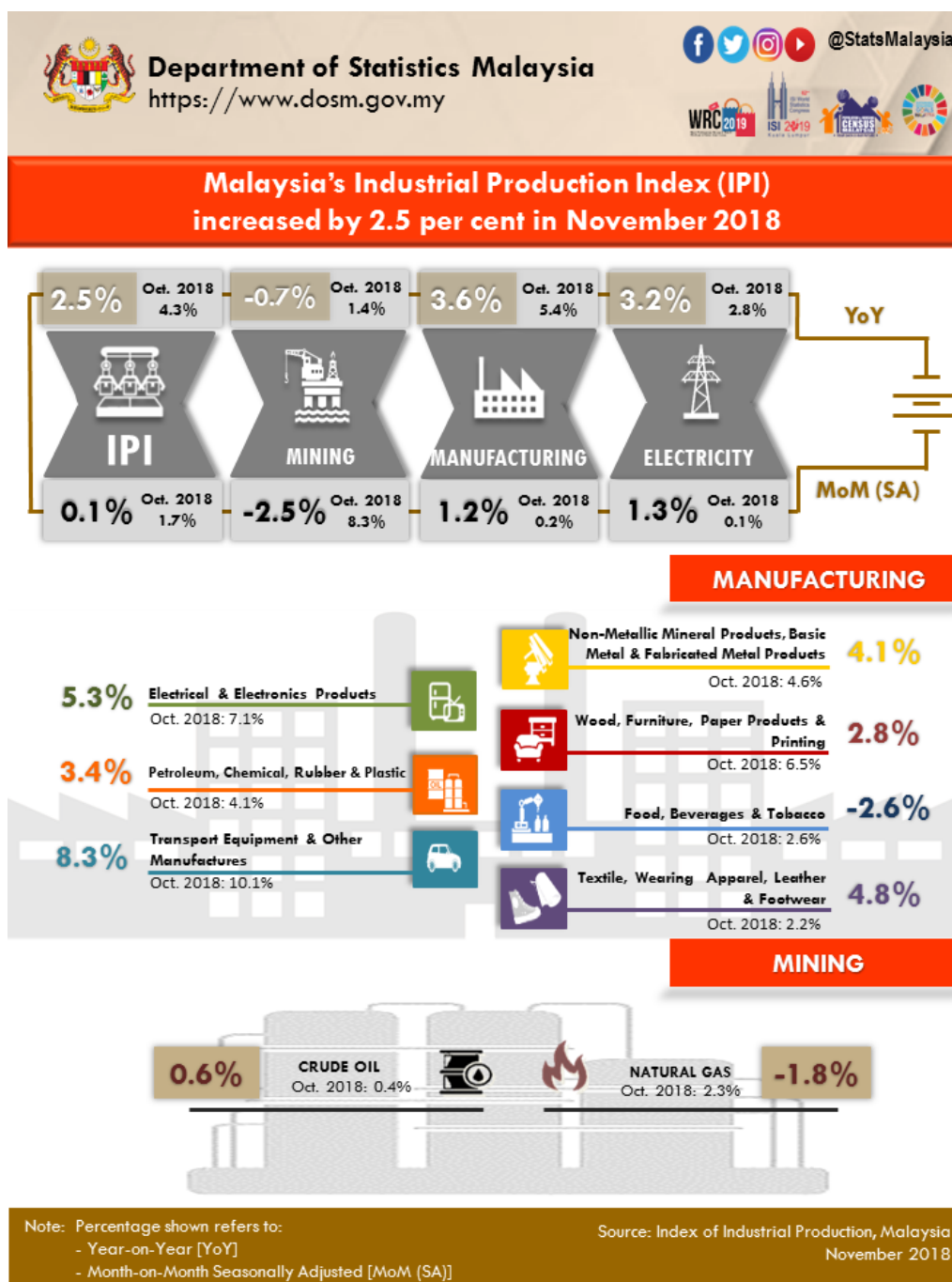




## INDEX OF INDUSTRIAL PRODUCTION, MALAYSIA NOVEMBER 2018



### Malaysia's Industrial Production Index (IPI) rose by 2.5 per cent in November 2018

The Industrial Production Index (IPI) rose by **2.5 per cent** in November 2018 as compared with the same month of the previous year. The growth in November 2018 was supported by the increase in Manufacturing index (**3.6%**) and Electricity index (**3.2%**). Meanwhile, the Mining index declined by **0.7 per cent**.

The Manufacturing sector output expanded by **3.6 per cent** in November 2018 after registering a growth of 5.4 per cent in October 2018. The major sub - sectors that contributed to the growth in November 2018

were: Transport Equipment and Other Manufactures Products (**8.3%**), Electrical and Electronic Equipment Products (**5.3%**) and Petroleum, Chemical, Rubber and Plastic Products (**3.4%**).

The Mining sector output recorded a decline of **0.7 per cent** in November 2018 as compared to the same period of the previous year. This was due to a decrease in Natural Gas index (**-1.8%**). Meanwhile, Crude Oil index increased marginally by **0.6 per cent**.

The Electricity sector index increased by **3.2 per cent** in November 2018 as against November 2017.

**\*Notes:**

Data for November 2018 is provisional. The data will be updated based on the latest available figures and subsequently published in the December 2018 publication.

**Released By:**

**DATO' SRI DR. MOHD UZIR MAHIDIN**  
**CHIEF STATISTICIAN MALAYSIA**  
**DEPARTMENT OF STATISTICS, MALAYSIA**

 [DrUzir\\_Mahidin](#)   [Dr\\_Uzir](#)

**#myHariBulan# #myBulan# #myTahun#**

**Contact person:**

Ho Mei Kei  
Public Relation Officer  
Strategic Communication and International Division  
Department of Statistics, Malaysia  
**Tel** : +603-8885 7942  
**Fax** : +603-8888 9248  
**Email** : mkho[at]dosm.gov.my

**Contact person:**

Baharudin Mohamad  
Public Relation Officer  
Strategic Communication and International Division  
Department of Statistics Malaysia  
**Tel** : +603-8090 4681  
**Fax** : +603-8888 9248  
**Email** : baharudin[at]dosm.gov.my

**Copyright ©2025 Department of Statistics Malaysia Official Portal. All Rights Reserved.**