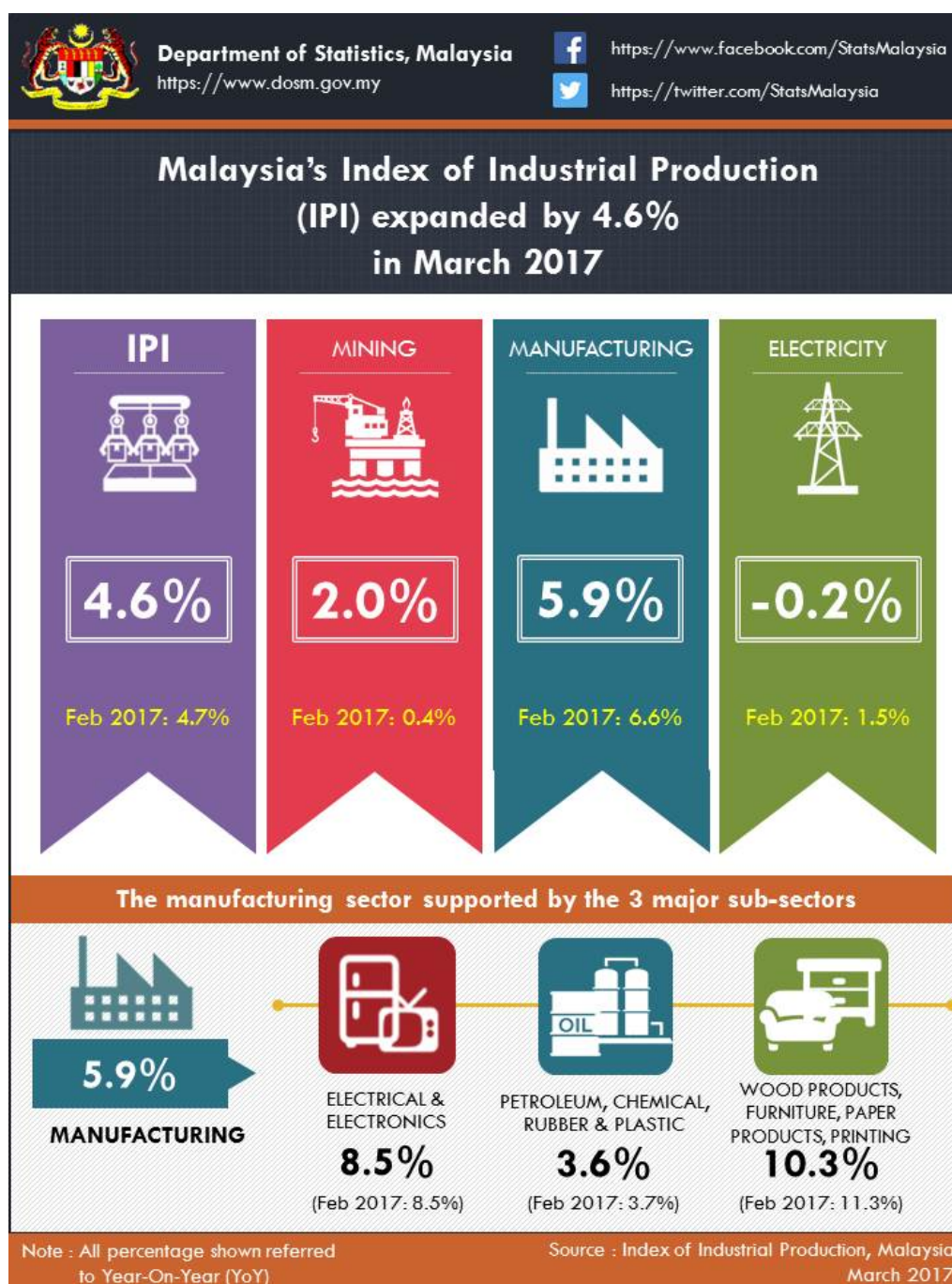




INDEX OF INDUSTRIAL PRODUCTION, MALAYSIA MARCH 2017



Malaysia's Index of Industrial Production (IPI) expanded by 4.6% in March 2017

The Index of Industrial Production (IPI) expanded by **4.6%** in March 2017 as compared to the same month of the previous year. The expansion in March 2017 was supported by positive growth in Manufacturing index (**5.9%**) and Mining index (**2.0%**). However, the Electricity index declined by **0.2%**.

The Manufacturing sector output accelerated to **5.9%** in March 2017 after recorded a 6.6% increase in February 2017. The major sub-sectors which recorded an expansion in March 2017 were: Electrical and Electronics Products (**8.5%**); Petroleum, Chemical, Rubber and Plastic Products (**3.6%**); and Wood Products, Furniture, Paper Products, Printing (**10.3%**).

The Mining sector output posted a higher growth of **2.0%** in March 2017 after an increase of **0.4%** recorded in February 2017. The growth in March 2017 was driven by a sustained increase of **7.9%** in Natural Gas index. However, the Crude Oil index contracted at slower pace of **2.6%**.

The Electricity sector output decrease marginally by **0.2%** in March 2017 after registering a growth of 1.5% in February 2017.

***Notes:**

Data for March 2017 is **provisional**. The data will be updated based on the latest available figures and subsequently published in the publication April 2017.

Released By:

DR. MOHD UZIR MAHIDIN
CHIEF STATISTICIAN MALAYSIA
DEPARTMENT OF STATISTICS MALAYSIA

11 MAY 2017

Contact person:

Ho Mei Kei
Public Relation Officer
Corporate and User Services Division
Department of Statistics, Malaysia
Tel : +603-8885 7942
Fax : +603-8888 9248
Email : mkho[at]stats.gov.my

Contact person:

Baharudin Mohamad
Public Relation Officer
Strategic Communication and International Division
Department of Statistics Malaysia
Tel : +603-8090 4681
Fax : +603-8888 9248
Email : baharudin[at]dosm.gov.my

Copyright ©2025 Department of Statistics Malaysia Official Portal. All Rights Reserved.