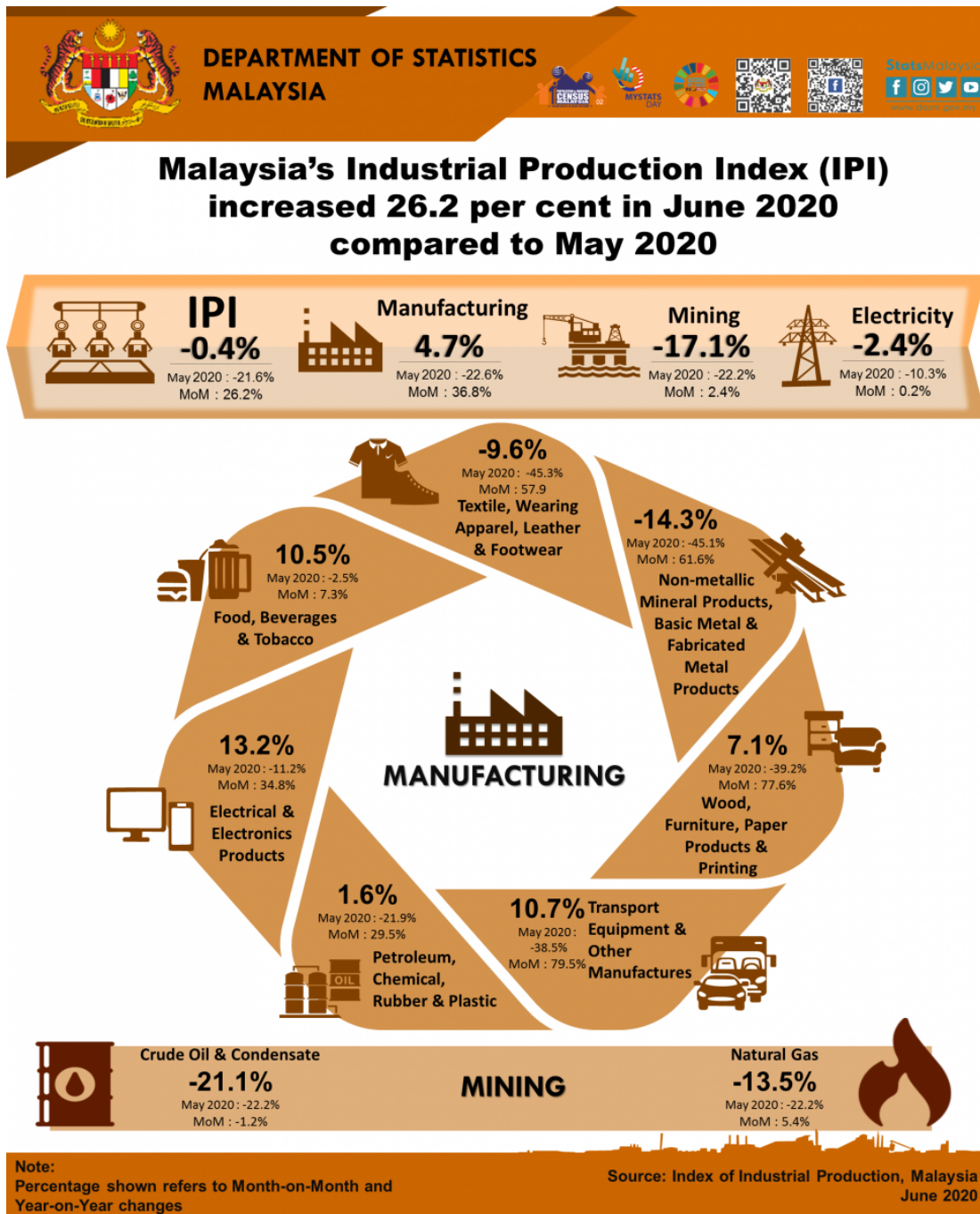




INDEX OF INDUSTRIAL PRODUCTION, MALAYSIA JUNE 2020



Malaysia's Industrial Production Index (IPI) increased 26.2 per cent in June 2020 compared to May 2020

The Industrial Production Index (IPI) surged **26.2 per cent** in June 2020 as compared with the previous month since the government allowed more industries to resume operations from May 2020 onwards. Based on month-on-month comparison, the increment of IPI in June 2020 was due to the increase in all indices; index of Manufacturing (**36.8%**), index of Mining (**2.4%**) and index of Electricity (**0.2%**).

However, on year-on-year basis, the IPI decreased **0.4 per cent** in June 2020 as compared with the same month of the previous year. The decline in IPI in June 2020 was due to the decrease in the index of Mining (**-17.1%**) and Electricity (**-2.4%**). Meanwhile, the Manufacturing index recorded an increase of **4.7 per cent**.

The Manufacturing sector output increased by **4.7 per cent** in June 2020 after recording a decrease of 22.6 per cent in May 2020. The major sub-sectors contributing to the growth in Manufacturing sector in June 2020 were Electrical and Electronics Products (**13.2%**), Food, Beverages and Tobacco (**10.5%**) and Transport Equipment and Other Manufacturers (**10.7%**).

The Mining sector output dropped **17.1 per cent** in June 2020 as compared to the same period of the previous year. The negative growth was due to the decrease in Natural Gas index (**-13.5%**) and Crude Oil and Condensate index (**-21.1%**).

The Electricity sector output decreased **2.4 per cent** in June 2020 as compared to the same month of the previous year.

The IPI for the second quarter 2020 recorded a significant decline of **17.9 per cent** as compared to the same period of the previous year. This decrease was due to the deterioration in all indices; Mining index (**-19.6%**), Manufacturing index (**-18.1%**) and Electricity index (**-10.8%**).

The full publication of the Industrial Production Index, June 2020 can be downloaded through [eStatistik](#) portal.

***Notes:**

Data for June 2020 is **provisional**. The data will be updated based on the latest available figures and subsequently published in the July 2020 publication.

Released By:

DATO' SRI DR. MOHD UZIR MAHIDIN
CHIEF STATISTICIAN MALAYSIA
DEPARTMENT OF STATISTICS, MALAYSIA

 [DrUzir_Mahidin](#)   [Dr_Uzir](#)

#myHariBulan# #myBulan# #myTahun#

Contact person:

Mohd Yusrizal Ab Razak
Public Relation Officer
Strategic Communication and International Division
Department of Statistics, Malaysia

Tel : +603-8885 7942

Fax : +603-8888 9248

E-mail : [yusrizal.razak\[at\]dosm.gov.my](mailto:yusrizal.razak[at]dosm.gov.my)

Contact person:

Baharudin Mohamad
Public Relation Officer
Strategic Communication and International Division
Department of Statistics Malaysia
Tel : +603-8090 4681
Fax : +603-8888 9248
Email : baharudin[at]dosm.gov.my

Copyright ©2025 Department of Statistics Malaysia Official Portal. All Rights Reserved.