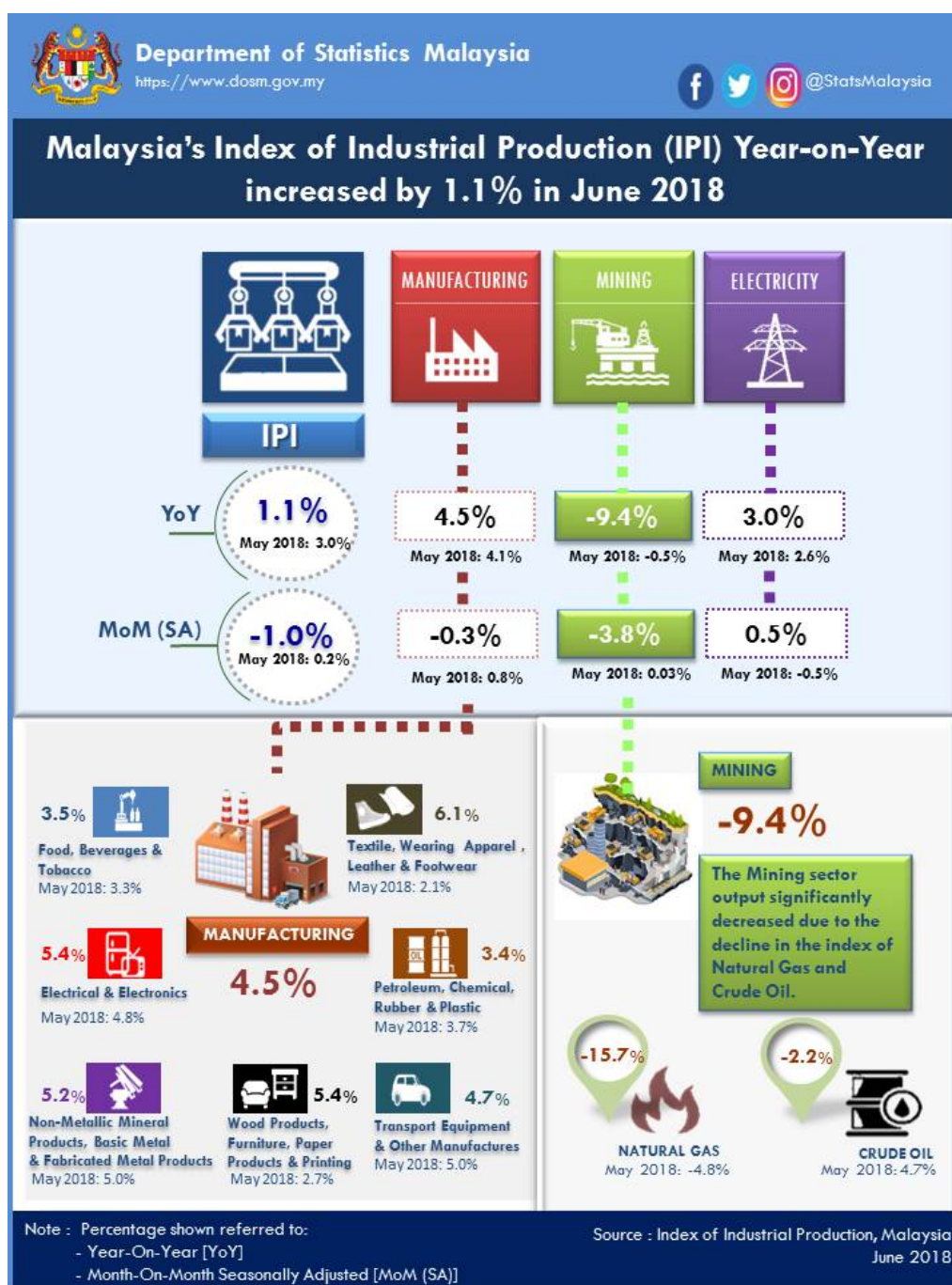




INDEX OF INDUSTRIAL PRODUCTION, MALAYSIA JUNE 2018



Malaysia's Industrial Production Index (IPI) increased marginally by 1.1 per cent in June 2018

The Industrial Production Index (IPI) increased marginally by **1.1 per cent** in June 2018 as compared with the same month of the previous year. The growth in June 2018 was supported by an increase in the index of Manufacturing (**4.5%**) and the index of Electricity (**3.0%**). Meanwhile, the index of Mining recorded a decline of **9.4 per cent** (May 2018: -0.5%).

On yearly basis, Manufacturing output increased by **4.5 per cent** in June 2018 after recording a growth of 4.1 per cent in May 2018. The major sub-sectors which recorded an increase in June 2018 were: Electrical and Electronic Equipment Products (**5.4%**), Petroleum, Chemical, Rubber and Plastic Products (**3.4%**) and Non-Metallic Mineral Products, Basic Metals and Fabricated Metal Products (**5.2%**).

The Mining sector output registered a decline of **9.4 per cent** in June 2018 as compared to the same period of the previous year. The decline was contributed by the decrease in the Natural Gas Index (**-15.7%**) and Crude Oil Index (**-2.2%**).

The Electricity output increased by **3.0 per cent** in June 2018 following an increase of 2.6 per cent in May 2018.

***Notes:**

Data for June 2018 is provisional. The data will be updated based on the latest available figures and subsequently published in the July 2018 publication.

Released By:

DATO' SRI DR. MOHD UZIR MAHIDIN
CHIEF STATISTICIAN MALAYSIA
DEPARTMENT OF STATISTICS, MALAYSIA

 **DrUzir_Mahidin**   **Dr_Uzir**

#myHariBulan# #myBulan# #myTahun#

Contact person:

Ho Mei Kei
Public Relation Officer
Strategic Communication and International Division
Department of Statistics, Malaysia
Tel : +603-8885 7942
Fax : +603-8888 9248
Email : mkho[at]dosm.gov.my

Contact person:

Baharudin Mohamad
Public Relation Officer
Strategic Communication and International Division
Department of Statistics Malaysia
Tel : +603-8090 4681
Fax : +603-8888 9248
Email : baharudin[at]dosm.gov.my

Copyright ©2026 Department of Statistics Malaysia Official Portal. All Rights Reserved.