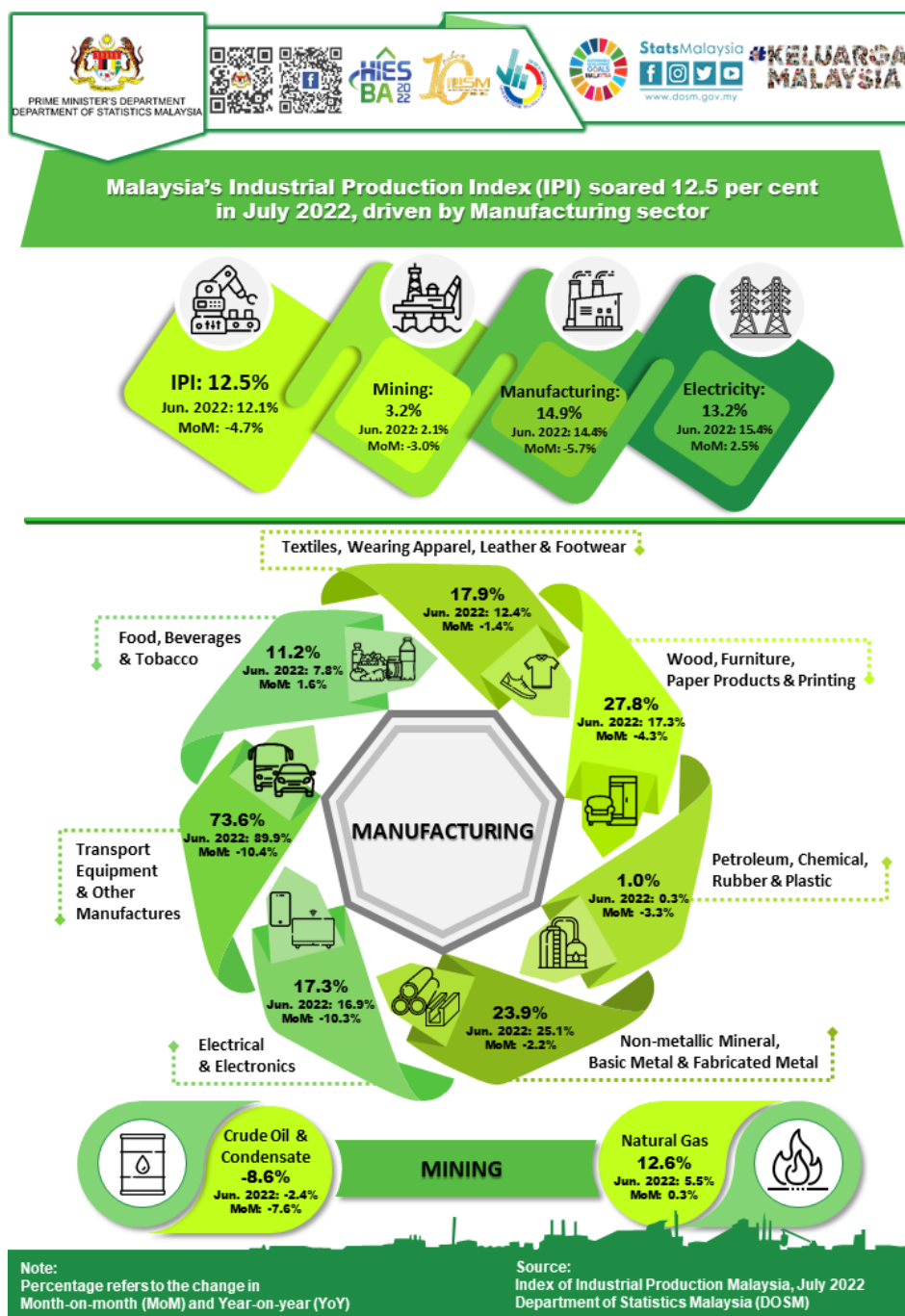




## INDEX OF INDUSTRIAL PRODUCTION, MALAYSIA JULY 2022



### Malaysia's Industrial Production Index (IPI) soared 12.5 per cent in July 2022, driven by Manufacturing sector

The Industrial Production Index (IPI) increased 12.5 per cent in July 2022 as compared to the same month of the previous year. The expansion of IPI was driven by the Manufacturing, Electricity and Mining sectors, with the increment of 14.9 per cent, 13.2 per cent and 3.2 per cent respectively.

On year-on-year basis, the Manufacturing sector output increased by 14.9 per cent in July 2022 after recording a growth of 14.4 per cent in June 2022. The main subsectors contributed to the growth in Manufacturing sector in July 2022 were Transport Equipment & Other Manufactures Products (73.6%),

Electrical & Electronics Products (17.3%) and Non-metallic Mineral Products, Basic Metal & Fabricated Metal Products (23.9%). Simultaneously, domestic-oriented and export-oriented industries recorded a growth of 30.9 per cent and 9.5 per cent respectively.

The Mining sector output rose 3.2 per cent in July 2022 as compared to the same period of the previous year. The growth was spearheaded by the increment of 12.6 per cent in Natural Gas index. Meanwhile, Crude Oil & Condensate index declined 8.6 per cent.

The full publication of the Industrial Production Index, July 2022 can be downloaded through [eStatistik](#) portal.

**\* Notes:**

Data for July 2022 is **provisional**. The data will be updated based on the latest available figures and subsequently published in August 2022 publication.

**Released by:**

**DEPARTMENT OF STATISTICS, MALAYSIA**

**9 September 2022**

**Contact person:**

**Baharudin Mohamad**

Public Relation Officer

Strategic Communication and International Division

Department of Statistics, Malaysia

**Tel :** +603-8885 7942

**Fax :** +603-8888 9248

**E-mail :** baharudin[at]dosm.gov.my

**Contact person:**

Baharudin Mohamad

Public Relation Officer

Strategic Communication and International Division

Department of Statistics Malaysia

**Tel :** +603-8090 4681

**Fax :** +603-8888 9248

**Email :** baharudin[at]dosm.gov.my

**Copyright ©2025 Department of Statistics Malaysia Official Portal. All Rights Reserved.**