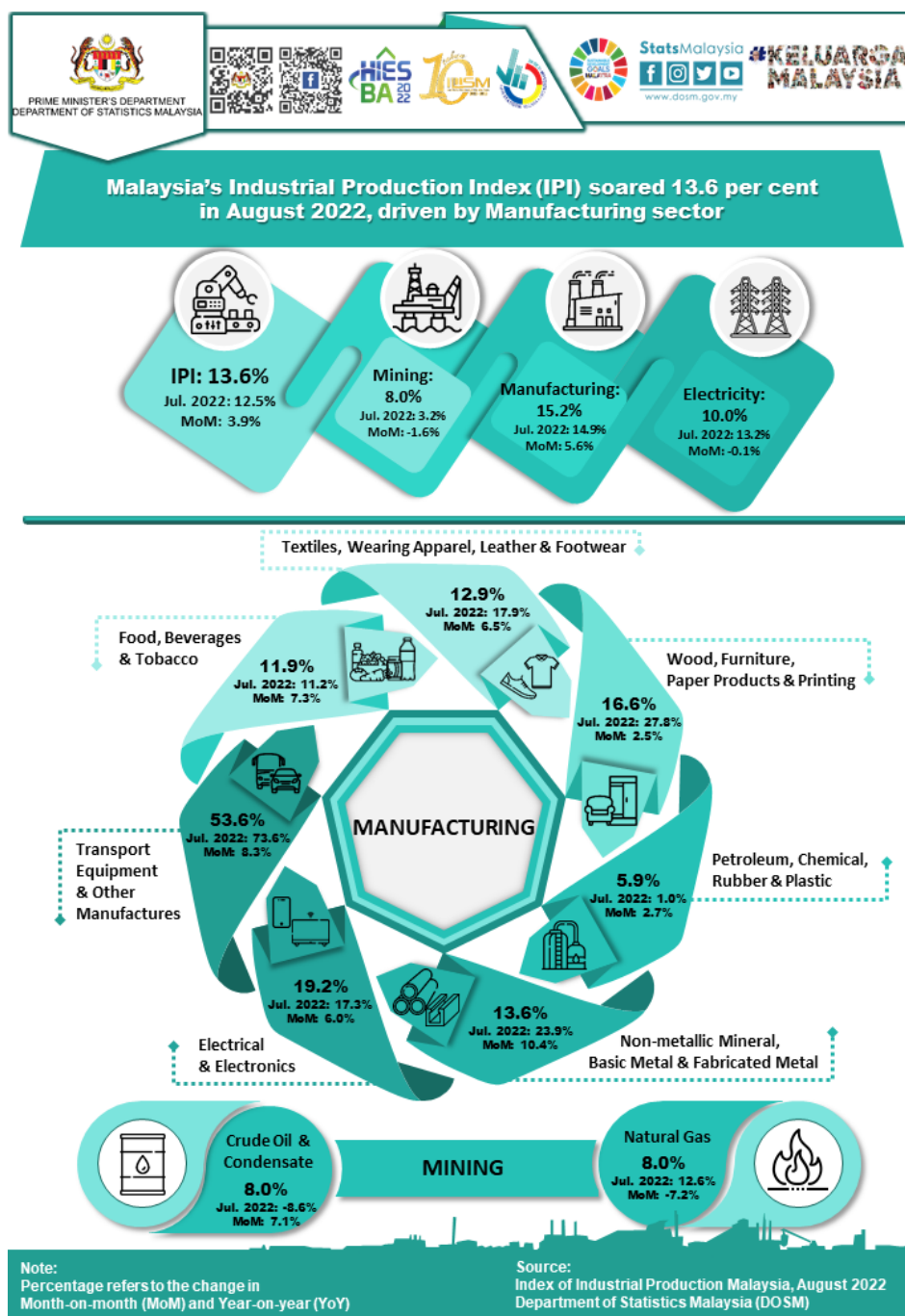




INDEX OF INDUSTRIAL PRODUCTION, MALAYSIA AUGUST 2022



Malaysia's Industrial Production Index (IPI) soared 13.6 per cent in August 2022, driven by Manufacturing sector

The Industrial Production Index (IPI) soared 13.6 per cent in August 2022 as compared to the same month of the previous year. The expansion of IPI was contributed by the Manufacturing (15.2%), Electricity (10.0%) and Mining (8.0%) sectors.

On year-on-year basis, the Manufacturing sector output increased by 15.2 per cent in August 2022 after recording a growth of 14.9 per cent in July 2022. The main subsectors contributed to the growth in Manufacturing sector in August 2022 were Electrical & Electronics Products (19.2%), Transport Equipment

& Other Manufactures Products (53.6%) and Non-metallic Mineral Products, Basic Metal & Fabricated Metal Products (13.6%). Simultaneously, domestic-oriented and export-oriented industries recorded a growth of 22.5 per cent and 12.4 per cent respectively.

The Mining sector output rose 8.0 per cent in August 2022 as compared to the same period of the previous year. The growth was spearheaded by the increment of 8.0 per cent in Natural Gas index and Crude Oil & Condensate index respectively.

The full publication of the Industrial Production Index, August 2022 can be downloaded through [eStatistik](#) portal.

*** Notes:**

Data for August 2022 is **provisional**. The data will be updated based on the latest available figures and subsequently published in September 2022 publication.

Released by:

DEPARTMENT OF STATISTICS MALAYSIA
12 October 2022

Contact person:

Baharudin Mohamad

Public Relation Officer

Strategic Communication and International Division

Department of Statistics Malaysia

Tel : +603-8885 7942

Fax : +603-8888 9248

E-mail : baharudin[at]dosm.gov.my

Contact person:

Baharudin Mohamad

Public Relation Officer

Strategic Communication and International Division

Department of Statistics Malaysia

Tel : +603-8090 4681

Fax : +603-8888 9248

Email : baharudin[at]dosm.gov.my

Copyright ©2025 Department of Statistics Malaysia Official Portal. All Rights Reserved.