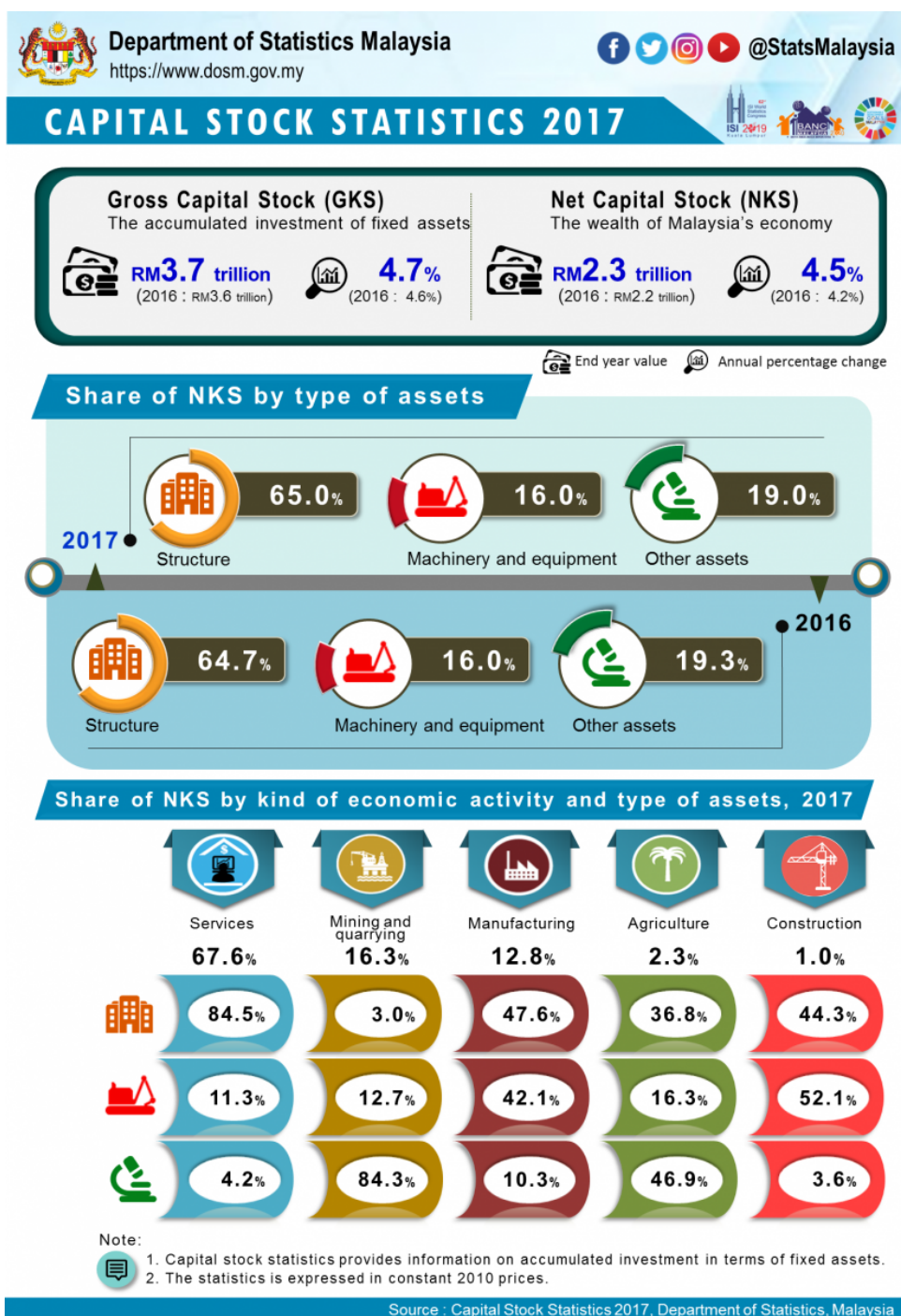




CAPITAL STOCK STATISTICS 2017



Net Capital Stock (NKS) which represents the wealth of Malaysia's economy in terms of fixed assets increased to RM2.3 trillion and grew by 4.5 per cent. Services sector remained as the largest contributor to NKS with a share of 67.6 per cent. Mining and quarrying sector constituted of 16.3 per cent and Manufacturing sector was 12.8 per cent. By type of assets, structure was major contributor to Services sector with 84.5 per cent while other assets was dominated in Mining and quarrying sector accounted for 84.3 per cent.

Released By:

DATO' SRI DR. MOHD UZIR MAHIDIN
CHIEF STATISTICIAN MALAYSIA
DEPARTMENT OF STATISTICS, MALAYSIA

 [DrUzir_Mahidin](#)  [Dr_Uzir](#) 

#myHariBulan# #myBulan# #myTahun#

Contact person:

Ho Mei Kei
Public Relation Officer
Strategic Communication and International Division
Department of Statistics, Malaysia
Tel : +603-8885 7942
Fax : +603-8888 9248
Email : mkho[at]dosm.gov.my

Contact person:

Baharudin Mohamad
Public Relation Officer
Strategic Communication and International Division
Department of Statistics Malaysia
Tel : +603-8090 4681
Fax : +603-8888 9248
Email : baharudin[at]dosm.gov.my

Copyright ©2026 Department of Statistics Malaysia Official Portal. All Rights Reserved.