



MINISTRY OF ECONOMY
DEPARTMENT OF STATISTICS MALAYSIA

2025
NOVEMBER

LABOUR FORCE

STATISTICS
REPORT

DEPARTMENT OF STATISTICS MALAYSIA



MINISTRY OF ECONOMY
DEPARTMENT OF STATISTICS MALAYSIA

LABOUR FORCE REPORT MALAYSIA

NOVEMBER 2025

Announcement

The Department of Statistics Malaysia (DOSM) is conducting the Economic Census 2026 (BE2026), themed “Data Nadi Ekonomi Rakyat”. The sixth Economic Census, running from 5th January to 31st October 2026. BE2026 aims to collect comprehensive, structured data from all registered and unregistered business establishments in Malaysia to assess the nation’s economic performance, structure and characteristics in an evidence-based manner.

Malaysia has, for the first time, successfully secured the top position globally in the biennial Open Data Inventory (ODIN) 2024/25 report released by Open Data Watch (ODW), surpassing 197 other countries. This achievement marks a significant leap from its 67th position in the ODIN 2022/23 assessment.

OpenDOSM NextGen is a medium that provides data catalogue and visualisations to facilitate users' analysis and can be accessed through <https://open.dosm.gov.my>.

DEPARTMENT OF STATISTICS MALAYSIA

Published and printed by:

Department of Statistics Malaysia

Block C6 & C7, Complex C,
Federal Government Administrative Centre,
62514 Putrajaya,
MALAYSIA

Tel.	: 03-8885 7000
Fax	: 03-8888 9248
Portal	: https://www.dosm.gov.my
Facebook / X / Instagram/ YouTube	: StatsMalaysia
E-mail	: info@dosm.gov.my (general enquiries) data@dosm.gov.my (data request & enquiries)

Published on 09 January 2026

All rights reserved.

No part of this publication may be reproduced or distributed in any form or by any means or stored in the database without the prior written permission from the Department of Statistics Malaysia. Users reproducing content of this publication with or without adaptation should quote the following:

“Source: Department of Statistics Malaysia”

ISSN 2735 - 1831

PREFACE

The monthly Labour Force Report, Malaysia, presents statistics of the labour force, employment and unemployment obtained from the Labour Force Survey (LFS) through a household approach. The implementation of the LFS is based on the guidelines and recommendations of the International Labour Organization (ILO) with reference to the Surveys of Economically Active Population, Employment, Unemployment and Underemployment: An ILO Manual on Concepts and Methods.

The labour force statistics are vital input for labour market analysis, policy formulation, as well as planning, implementing, and monitoring programmes, particularly related to human resource development. These statistics also serve as essential references for researchers, economists, academicians, the private sector, and individuals involved in research related to employment and the labour market.

The Labour Force Report for November 2025 describes the labour supply condition based on the current situation. The report also elaborates on the month-on-month changes to examine the immediate effects of recent events. In addition, annual changes from the same month of the previous year are also reported.

The Department of Statistics Malaysia gratefully acknowledges the cooperation and contribution rendered by all parties in making this publication a success. Every piece of feedback and suggestion towards improving future reports is highly appreciated.

DATO' SRI DR. MOHD UZIR MAHIDIN
Chief Statistician Malaysia

January 2026

This page is deliberately left blank

CONTENTS

	PAGE
Contents	i
Glossary	iii
Acronyms	v
Infographic	vi
Explanatory Notes	viii

Key Reviews	1
1. Introduction	2
2. Employed Persons	3
3. Unemployment	5
4. Labour Force	6
5. Outside Labour Force	8
6. Looking Ahead	8

List of Tables

Table A	: Principal statistics of the labour force, Malaysia, 1982 - 2024	A-1
Table B	: Principal statistics of the labour force, Malaysia, First Quarter 2010 - Third Quarter 2025	A-2
Table B1	: Employed person working less than 30 hours per week by sex and age group, Malaysia, First Quarter 2017 - Third Quarter 2025	A-4
Table B2	: Time-related underemployment by sex and age group, Malaysia, First Quarter 2017 - Third Quarter 2025	A-5
Table B3	: Skill-related underemployment by sex and age group, Malaysia, First Quarter 2017 - Third Quarter 2025	A-6
Table C	: Principal statistics of the labour force, Malaysia, January 2010 - November 2025	A-7
Table C1	: Seasonally adjusted principal statistics of the labour force, Malaysia, January 2010 - November 2025	A-11
Table C2	: Number of unemployed persons by category and duration of unemployment, January 2016 - November 2025	A-15
Table C3	: Youth unemployment and unemployment rate by selected age group, January 2016 - November 2025	A-18
Table C4	: Employed persons by status in employment, January 2016 - November 2025	A-21

CONTENTS

Table D	: Employed persons by occupation, Malaysia, 1982 - 2024	A-24
Table E	: Employed persons by industry, Malaysia, 1982 - 2024	A-25
Table F	: Employed persons by status of employment, Malaysia, 1982 - 2024	A-27
Table G	: Labour force indicators for selected countries, November 2024 - November 2025	A-28

GLOSSARY

Actively unemployed	:	Persons who were available for work and were actively looking for a job during the reference week.
Category of skills	:	<p>For reporting purposes, the category of occupation is regrouped into three levels of skills based on the Malaysia Standard Classification of Occupation (MASCO) 2013 as follows:</p> <p>Skilled workers:</p> <ol style="list-style-type: none"> 1. Managers; 2. Professionals; and 3. Technicians and associate professionals. <p>Semi-skilled workers:</p> <ol style="list-style-type: none"> 4. Clerical support workers; 5. Services and sales workers; 6. Skilled agricultural, forestry, livestock, and fishery workers; 7. Craft and related trades workers; and 8. Plant and machine operators and assemblers. <p>Low-skilled workers:</p> <ol style="list-style-type: none"> 9. Elementary occupations. <p>Starting in January 2022, the category of occupation is based on the Malaysia Standard Classification of Occupation (MASCO) 2020 with the addition of group 0 - Armed Forces occupations.</p>
Economic activity	:	Classification of industries according to the Malaysia Standard Industrial Classification (MSIC) 2008 version 1.0 into five main sectors: Agriculture, Mining & quarrying, Manufacturing, Construction and Services. In the meantime, Manufacturing and Services are further disaggregated into sub-sectors.
Employed	:	All persons who, at any time during the reference week worked at least one hour for pay, profit or family gain either as an employer, employee, own-account worker, or unpaid family worker.
Employee	:	A person who works for a public or private employer and receives regular remuneration in wages, salary, commission, tips or payment in kind.
Employer	:	A person who operates a business, a plantation or other trade and employs at least one employee in his business or trade.
Employment-to-population ratio	:	The proportion of the employed population to the working-age population.

GLOSSARY

Inactively unemployed	:	Did not look for work because they believed no work was available or that they were not qualified; Would have looked for work if they had not been temporarily ill or had it not been for weather conditions; and had looked for work prior to the reference week and were waiting for the result of job applications.
Labour force participation rate	:	The ratio of the labour force to the working-age population, expressed as a percentage.
Outside labour force	:	All persons not classified as employed or unemployed are classified as outside the labour force. This category consists of housewives, students (including those going for further studies), retired, disabled persons and those not interested in looking for a job.
Own-account worker	:	A person who operates his own farm, business or trade without employing any paid workers to conduct his farm, trade or business.
Skill-related underemployment	:	Those with tertiary education and working in the semi-skilled and low-skilled categories.
Time-related underemployment	:	A group of people who were employed less than 30 hours per week during the reference week because of the nature of their work or due to insufficient work and were able and willing to accept additional hours of work. Persons who were employed more than 30 hours per week during the reference week are considered to be in full employment.
Unemployed	:	Those who did not work during the reference week were classified into two groups, which are actively and inactively unemployed.
Unemployment rate	:	The proportion of the unemployed population to the total population in the labour force, expressed as a percentage.
Unpaid family worker	:	A person who works without pay or wages on a farm, business or trade operated by another member of the family.

ACRONYMS

ASEAN	:	Association of Southeast Asian Nations
DOSM	:	Department of Statistics Malaysia
E&E	:	Electrical & electronics
IBBC	:	INSKEN Bumiputera Business Coaching
ILO	:	International Labour Organization
INSKEN	:	National Entrepreneurship Institute
i-SEED	:	Indian Selangor Empowerment and Entrepreneurs Development
LFPR	:	Labour Force Participation Rate
LFS	:	Labour Force Survey
LI	:	Leading Index
MAEPS	:	Malaysia Agro Exposition Park Serdang
MASCO	:	Malaysia Standard Classification of Occupation
MoUs	:	Memoranda of Understanding
MSIC	:	Malaysia Standard Industrial Classification
ODIN	:	Open Data Inventory
ODW	:	Open Data Watch
Putrajaya FOI	:	Putrajaya Festival Of Idea
R&D	:	Research and Development

This page is deliberately left blank

MALAYSIA LABOUR FORCE, NOVEMBER 2025

The unemployment rate in November 2025 dropped to **2.9 per cent**, the lowest rate in eleven years, recording 518.4 thousand unemployed

UNEMPLOYMENT

November 2025

The number of unemployed persons

▼ -4.3%
▼ -0.1%

518.4 thousand

Unemployment rate

▼ -0.3pp
▼ 0.1pp

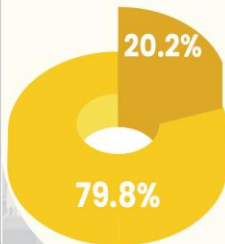
2.9%

November's unemployment rate fell to its lowest level since December 2014 at 2.9 per cent

NOVEMBER 2024 541.8 thousand
OCTOBER 2025 518.9 thousand

NOVEMBER 2024 3.2%
OCTOBER 2025 3.0%

Unemployment by category



● Actively unemployed ● Inactively unemployed

● **NOVEMBER 2025 : 413.5** thousand
OCTOBER 2025 : 413.8 thousand ▼ -3.4%
NOVEMBER 2024 : 428.0 thousand ▼ -0.1%

● **NOVEMBER 2025 : 104.9** thousand
OCTOBER 2025 : 105.1 thousand ▼ -7.9%
NOVEMBER 2024 : 113.9 thousand ▼ -0.2%

EMPLOYED PERSONS

November 2025

The number of employed persons

▲ 3.1%
▲ 0.2%

17.09 million

Employment-to-population ratio

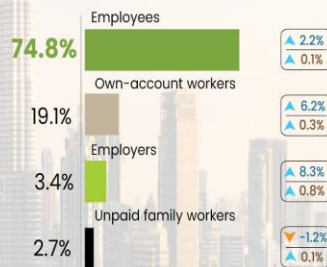
▲ 0.5pp
↔ 0.0pp

68.8%

NOVEMBER 2024 16.59 million
OCTOBER 2025 17.06 million

NOVEMBER 2024 68.3%
OCTOBER 2025 68.8%

Employed persons by status in employment



▲ 2.2%
▲ 0.1%

▲ 6.2%
▲ 0.3%

▲ 8.3%
▲ 0.8%

▼ -1.2%
▲ 0.1%

The **employees' category** accounted for **74.8 per cent** of the total employed persons in November 2025

LABOUR FORCE

Labour Force

17.61 million

NOVEMBER 2025

▲ 2.8%
▲ 0.2%

Labour Force Participation Rate

70.9%

▲ 0.4pp
↔ 0.0pp

NOVEMBER 2024 17.13 million
OCTOBER 2025 17.58 million

NOVEMBER 2024 70.5%
OCTOBER 2025 70.9%

LFP by sex

Male **83.3%**

Female **56.6%**

70.9%

The labour force participation rate (LFP) for November 2025 remained unchanged at 70.9 per cent

OUTSIDE LABOUR FORCE

OCTOBER 2025

7.22 million

NOVEMBER 2025

7.22 million

NOVEMBER 2024

7.15 million

▲ 1.0%
▲ 0.01%

Housework/ family responsibilities were the largest component of the outside labour force



Housework/ family responsibilities

43.7%



Schooling/ training

40.8%

Notes :
% Percentage change (year-on-year)
% Percentage change (month-on-month)
↔ Unchanged
pp Percentage point



@StatsMalaysia

BANI 26
BANKI EKONOMI 2026
DATA NADI EKONOMI RAKYAT

MALAYSIA MADANI
kesejahteraan

ODIN
OPEN DATA INVENTORY
MALAYSIA
NUMBER ONE
IN THE WORLD

20 October

2016 - 2030



MINISTRY OF ECONOMY
DEPARTMENT OF STATISTICS MALAYSIA

CONCEPTS AND DEFINITIONS

What is Labour Force Survey (LFS)?

Labour Force Survey (LFS) was conducted to collect information on the structure and distribution of labour force, employment and unemployment from the perspective of labour supply.

LFS encompasses both urban and rural areas for all administrative districts within all states in Malaysia using multi-modal data collection approach through the personal interview and a Computer-Assisted Telephone Interview (CATI).

The LFS are conducted based on the standard guidelines and recommendations of the International Labour Organization (ILO).

The survey population comprises persons who live in the private living quarters, hence excludes persons residing in institutions such as hotels, hospitals, hostels, prisons, and workers residing in construction worksite.

The working age for the analysis of LFS in Malaysia refers to household members between the age of 15 to 64 years during the reference week, who are either in the labour force or outside the labour force.

LABOUR FORCE

- The population in the working age group of 15 to 64 years (in completed years at last birthday).
- Either employed or unemployed in the reference week.

EMPLOYED

- Persons who, at any time during the reference week worked at least one hour for pay, profit or family gain (as an employer, employee, own-account worker or unpaid family worker).
- Persons who did not work during the reference week because of illness, injury, bad weather, leave, labour dispute and social or religious reasons but had a job, farm, enterprise or other family enterprise to return to.
- Those on temporary lay-off with pay who would definitely be called back to work.

UNEMPLOYED

- Those who did not work during the reference week but are interested to work and seeking for a job.
- Classified into two groups which are actively and inactively unemployed.

OUTSIDE LABOUR FORCE

- All persons not classified as employed or unemployed.
- Example: housewives, students, retirees, disabled persons and those not interested in looking for job.

UNEMPLOYMENT RATE

- The proportion of the unemployed population to the total population in labour force.
- Percentage of the unemployed population in the labour force.

LABOUR FORCE PARTICIPATION RATE

- The economic activity of a population depends on the demographic characteristics of that population.
- The proportion of the economically active population, hence differs between sub-groups of that population.
- These variations are measured by specific activity rates termed as labour force participation rate.
- Labour force participation rate is defined as the ratio of the labour force to the working age population (15 to 64 years), expressed as a percentage.

SEASONAL ADJUSTMENT

- Time-series data are very useful for economist, policy & decision makers and time-series analysts to identify the important features of economics series such as direction, turning point and consistency between other economic indicators. Sometimes this feature is difficult to observe because of seasonal movements. Thus, if seasonal effect can be removed, the behaviour of the series would be better viewed. The estimation and removal of the seasonal effects is called seasonal adjustment.
- Seasonal adjustment is a process to identify and to remove the regular within-a-year seasonal pattern, which may also include the influences of moving holidays and working/trading days effect in each period. The ultimate objective of the process is to highlight the underlying trends and short-term movements in the series.
- In Malaysia, most of the time series data is affected by seasonal effects. Hence, to eliminate the seasonal effect as well as to seasonally adjust the Malaysian economic time series data, a standard seasonal adjustment package, X-12 ARIMA was used by the Department of Statistics Malaysia.



@StatsMalaysia

BK26
BANCI EKONOMI 2026
DATA NADI EKONOMI RAKYAT

MALAYSIA
MADANI
keajaibannya

ODIN
OPEN DATA INVENTORY
MALAYSIA
NUMBER ONE
IN THE WORLD

20 October

2016 - 2030

EXPLANATORY NOTES

Starting with the release of Labour Force Statistics (LFS), January 2025, the principal statistics of the labour force are estimated based on the current population estimates of Malaysia.

The revision of the LFS data series is performed when the most recent Population and Housing Census of Malaysia 2020 data is available. This census data is then used for the revision of the LFS data series to include additional information available from the latest Population and Housing Census of Malaysia. This process of incorporating revised population benchmarks is referred to as rebasing. On the same note, revisions are carried out on LFS data for January to December 2024.

This page is deliberately left blank

KEY REVIEWS

- In November 2025, the number of **employed persons** maintained its upward trajectory, rising by **0.2 per cent (+32.4 thousand persons)** to **17.09 million persons**, as against last month (October 2025: 17.06 million persons). The **employment-to-population ratio**, reflecting the ability of an economy to create jobs, remained at **68.8 per cent** in November 2025, the same as in October 2025.
- In addition, the number of employed persons in the Services sector continued to show steady growth, particularly in Human health and social work activities; Wholesale & retail trade, and Accommodation and food & beverage services activities. Likewise, the Agriculture, Manufacturing, Construction and Mining & quarrying sectors also registered increases in employment.
- The **employees'** category accounted for **74.8 per cent** of the total employed persons in November 2025. This category recorded a rise of **0.1 per cent (+16.6 thousand persons)**, reaching **12.78 million persons** compared to the previous month (October 2025: 12.76 million persons). Similarly, the number of **own-account workers** was also increased by **0.3 per cent (+10.8 thousand persons)** to **3.26 million persons** as against the prior month at 3.25 million persons.
- During the month, the number of **unemployed persons** went down by **0.1 per cent (-0.5 thousand persons)** from 518.9 thousand persons in October 2025 to record **518.4 thousand persons**. November's **unemployment rate** fell to its lowest level since December 2014 at **2.9 per cent**, falling by **0.1 percentage points** from 3.0 per cent in the previous month.
- The **labour force** continued trending upward in November 2025, registering a month-on-month increase of **0.2 per cent (+31.9 thousand persons)** to **17.61 million persons** (October 2025: 17.58 million persons). The **labour force participation rate (LFPR)** for November remained unchanged at **70.9 per cent**, as recorded in October 2025.
- The number of persons **outside the labour force** during the month increased slightly by **0.01 per cent (+0.7 thousand persons)** to **7.22 million persons** (October 2025: 7.22 million persons). **Housework/ family responsibilities** were the largest component of the outside labour force, with a share of **43.7 per cent**, followed by individuals engaged in **schooling/ training** category at **40.8 per cent**.
- Malaysia's labour market is expected to remain stable and continue to grow positively in the coming months, with new job opportunities emerging in strategic industries. Moreover, workforce skills will be further enhanced through reskilling and upskilling initiatives. At the same time, more balanced regional development is anticipated, with employment opportunities expanding into rural areas. Therefore, overall, Malaysia's labour market is forecast to remain competitive, inclusive, and resilient in addressing global challenges, while leveraging opportunities from digital transformation and the green agenda.

1 INTRODUCTION

THE COUNTRY'S LABOUR MARKET STAYED RESILIENT IN NOVEMBER 2025, AS REFLECTED BY STABLE LABOUR FORCE PARTICIPATION, CONTINUED EMPLOYMENT GROWTH, AND LOW UNEMPLOYMENT RATES

Malaysia continues to deepen its economic ties with Sweden, as reflected in the strong and long-standing presence of Swedish companies operating in the country. According to the Swedish Ambassador, more than 100 Swedish firms are currently established in Malaysia, many of which have been operating since the 1960s and consider Malaysia their second home, highlighting the durability and mutual trust underpinning bilateral economic relations. These companies are actively involved in key sectors such as manufacturing, technology, engineering, and digital solutions, demonstrating sustained confidence in Malaysia's industrial ecosystem, skilled workforce, and strategic location within the ASEAN region. The Swedish commercial presence has also translated into meaningful economic contributions, with 97 Swedish manufacturing projects valued at approximately RM7.77 billion, generating thousands of job opportunities and facilitating technology transfer¹. Collectively, these investments not only stimulate domestic economic activity and employment, but also strengthen Malaysia's industrial capabilities, enhance productivity, and reinforce trade and investment linkages between Malaysia and Sweden, thereby positioning Malaysia as a key hub for Swedish businesses in Southeast Asia.

In addition, Malaysia's economic resilience is further reinforced through targeted support for domestic enterprises at the grassroots level. For example, the National Entrepreneurship Institute (INSKEN) implemented several coaching initiatives in Sabah, including multiple INSKEN Bumiputera Business Coaching (IBBC) programs and product development coaching, which together generated an additional RM3.9 million in sales and created 128 new job opportunities for participating businesses during 2025, demonstrating the tangible impact of structured business guidance on local economic outcomes. The results in Sabah also revealed that the mentoring approach not only enhanced sales performance but also improved business competitiveness and sustainability, with enhanced product quality, pricing strategies, and branding among participating enterprises, and even encouraged some to explore social business models that benefit communities and profitability². At a broader level, the high value generated relative to investment highlights the efficiency of these capacity-building initiatives in uplifting micro and small enterprises and supporting inclusive economic growth.

Beyond traditional trade and labour metrics, Malaysia is actively investing in intellectual capital through innovation and knowledge platforms that contribute to long-term economic resilience, with the Putrajaya Festival of Ideas (Putrajaya FOI) 2025 standing out as a key example. Held under the theme of fostering creativity, knowledge exchange, and future-oriented solutions, the festival attracted over 2 million visitors, including both physical and virtual participants, and featured more than 2,000 exhibitors from diverse sectors such as technology, education, arts, and social innovation. This showcases Malaysia's commitment to build a vibrant innovation ecosystem that transcends conventional economic indicators. FOI 2025 also generated significant economic value, with RM172 million in investment commitments and Memoranda of Understanding (MoUs) signed, reflecting strong interest from both local and international stakeholders in collaborative projects and entrepreneurial ventures emerging from the event³. By facilitating cross-sector networking, promoting research and development (R&D) initiatives, and spotlighting creative industries, the festival demonstrated how innovation ecosystems can directly feed into enhanced productivity, high-value industry growth, and diversified economic development,

¹ <https://www.sinarharian.com.my/article/756397/bisnes/lebih-100-syarikat-sweden-berkembang-maju-di-malaysia---duta-sweden>

² <https://www.astroawani.com/berita-bisnes/rm39-juta-peningkatan-hasil-jualan-bukti-keberkesanan-program-bimbingan-insken-di-sabah-547992>

³ <https://malaysiagazette.com/2025/11/11/festival-idea-putrajaya-2025-simbol-kebangkitan-inovasi-ilmu-dan-nilai-madani/>

positioning Malaysia as a regional hub for knowledge-based innovation and talent cultivation in an increasingly competitive global landscape.

Furthermore, Malaysia is actively strengthening its economy at the community level through targeted empowerment initiatives, as demonstrated by the Blueprint Carnival & i-SEED *#KitaSelangor* 2025 and the Zakat Selangor Carnival 2025, which together highlight the integration of economic and social development objectives. The Blueprint Carnival & i-SEED, held in Kuala Langat, served as an inclusive platform to uplift small entrepreneurs, particularly those from B40 households. The event was organised by the Selangor State Government in collaboration with local authorities and attracted an estimated 10,000 visitors. It showcased products from around 300 participants who benefitted from state-assistance programs such as the Blueprint Poverty Eradication Assistance Programme and the Indian Selangor Empowerment and Entrepreneurs Development (i-SEED) initiative, allowing them to expand their market reach, network with buyers, and increase sales opportunities⁴. Complementing this, the Zakat Selangor Carnival at Malaysia Agro Exposition Park Serdang (MAEPS), offered over 1,500 employment opportunities across multiple sectors through the participation of more than 150 exhibitors, alongside career counselling and on-site hiring services to improve workforce readiness⁵. Collectively, these initiatives underscore how community-based programs can stimulate entrepreneurship, create jobs, strengthen social safety nets, and foster inclusive and resilient local economic growth. As a result, the country's labour market stayed resilient in November 2025, as reflected by stable labour force participation, continued employment growth, and low unemployment rates.

The annual performance of the Leading Index (LI) in October 2025 showed marked improvement, rising by 3.6 per cent to 116.2 points compared with 112.2 points in the same month of the previous year. At the same time, the monthly LI recorded a rebound of 2.6 per cent, following declines over the preceding two months. Consistent with this improvement, the smoothed long-term trend of the LI exceeded the 100.0-point threshold in October 2025. Overall, the economic outlook is expected to remain positive, supported by strengthening economic activity, particularly in the imports of intermediate goods, as well as favourable performance in key sectors, notably the Services and Manufacturing sectors. Meanwhile, Malaysia's external trade indicators for November 2025 reflected a moderation in activity, as exports declined by 9.0 per cent, reversing the growth recorded in the previous month (October 2025: +6.7%). In contrast, imports continued to expand, registering an increase of 0.7 per cent compared with a stronger growth of 7.7 per cent in October 2025.

2 EMPLOYED PERSONS

The number of employed persons maintained its upward trajectory in November 2025

In November 2025, the number of **employed persons** maintained its upward trajectory, rising by **0.2 per cent (+32.4 thousand persons)** to **17.09 million persons**, as against last month (October 2025: 17.06 million persons). Seasonally adjusted estimates also showed a month-on-month increase of 0.1 per cent in the number of employed persons. On a year-on-year basis, the number of employed persons expanded by 3.1 per cent, the equivalent of 506.8 thousand persons, bringing the total up from 16.59 million persons in November 2024.

In addition, the number of employed persons in the Services sector continued to show steady growth, particularly in Human health and social work activities; Wholesale & retail trade, and Accommodation

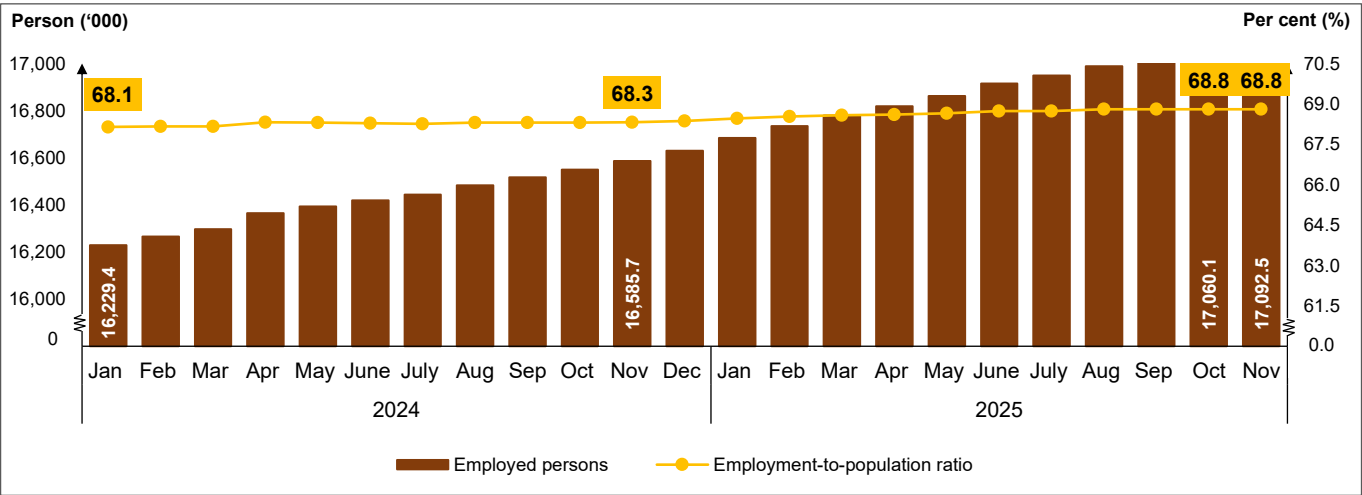
⁴ <https://mediaselangor.com/ms/2025/11/329892>

⁵ <https://www.kosmo.com.my/2025/11/21/karnival-zakat-selangor-2025-kembali-1500-peluang-pekerjaan/>

and food & beverage services activities. Likewise, the Agriculture, Manufacturing, Construction and Mining & quarrying sectors also registered increases in employment.

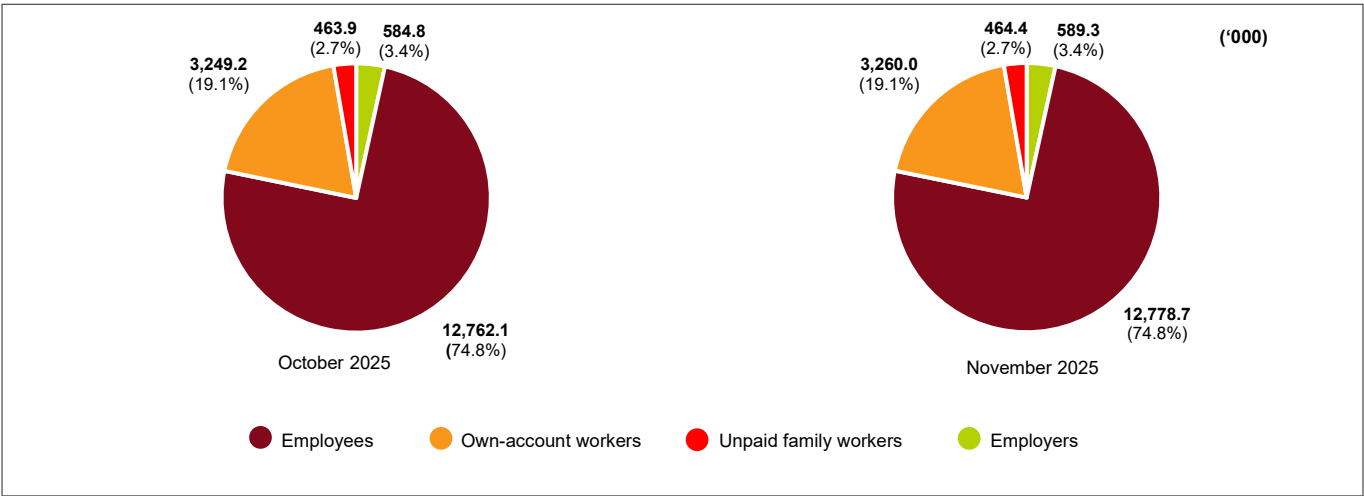
The **employment-to-population ratio**, reflecting the ability of an economy to create jobs, remained at **68.8 per cent** in November 2025, the same as in October 2025. In a yearly comparison, the ratio increased by 0.5 percentage points from 68.3 per cent in November 2024 [Chart 1].

Chart 1: Employed persons and employment-to-population ratio, January 2024 - November 2025



The **employees’** category accounted for **74.8 per cent** of the total employed persons in November 2025. This category recorded a rise of **0.1 per cent (+16.6 thousand persons)**, reaching **12.78 million persons** compared to the previous month (October 2025: 12.76 million persons). Similarly, the number of **own-account workers** was also increased by **0.3 per cent (+10.8 thousand persons)** to **3.26 million persons** as against the prior month at 3.25 million persons. This category primarily comprises daily income earners involved in small-scale activities such as retailers, hawkers, market and stall vendors, and smallholders [Chart 2].

Chart 2: Employed persons by status in employment, October and November 2025



During the month, the number of **employed persons who were temporarily not working** declined by **1.5 per cent (-1.2 thousand persons)** to **79.1 thousand persons**, compared with 80.3 thousand persons in October 2025. On a year-on-year basis, however, this group increased by 7.1 per cent (+5.3 thousand persons), rising from 73.8 thousand persons in November 2024. These individuals were temporarily not working but were not classified as unemployed, as they had jobs to return to.

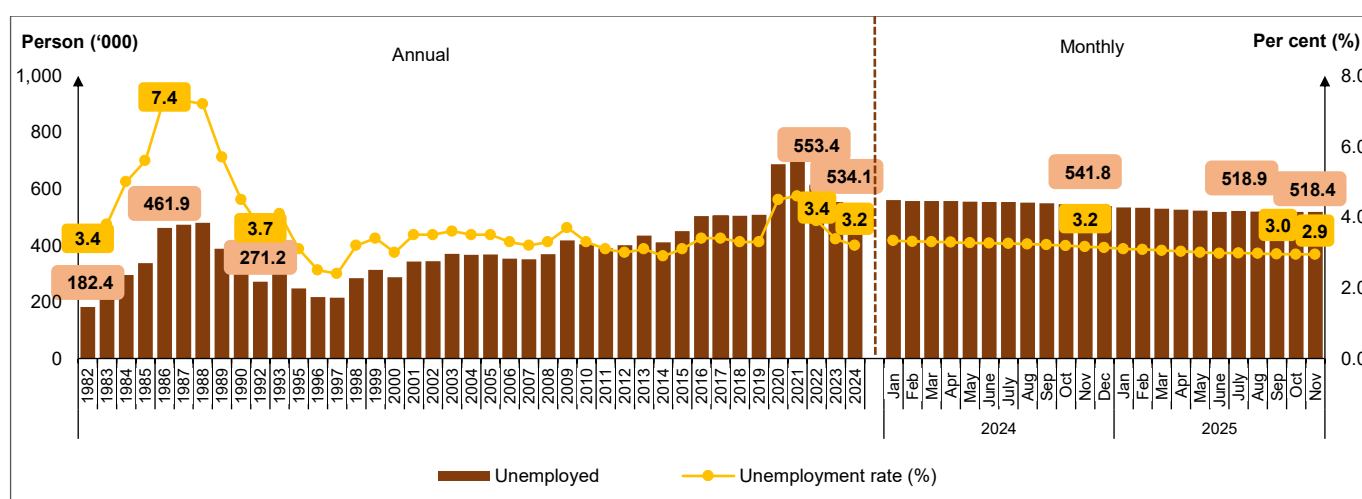
3 UNEMPLOYMENT

November's unemployment rate fell to its lowest level since December 2014 at 2.9 per cent

During the month, the number of **unemployed persons** went down by **0.1 per cent (-0.5 thousand persons)** from 518.9 thousand persons in October 2025 to record **518.4 thousand persons**. November's **unemployment rate** fell to its lowest level since December 2014 at **2.9 per cent**, falling by **0.1 percentage points** from 3.0 per cent in the previous month. Based on seasonally adjusted terms, the number of unemployed persons decreased by 0.2 per cent, resulting in a 3.0 per cent unemployment rate.

Year-on-year, the number of unemployed persons was also on a declining trend, with a reduction of 4.3 per cent (-23.4 thousand persons) as compared to 541.8 thousand persons in November 2024. On the same note, the unemployment rate dropped by 0.3 percentage points from the 3.2 per cent registered in the same month last year [**Chart 3**].

Chart 3: Unemployment, 1982 - 2024 and January 2024 - November 2025

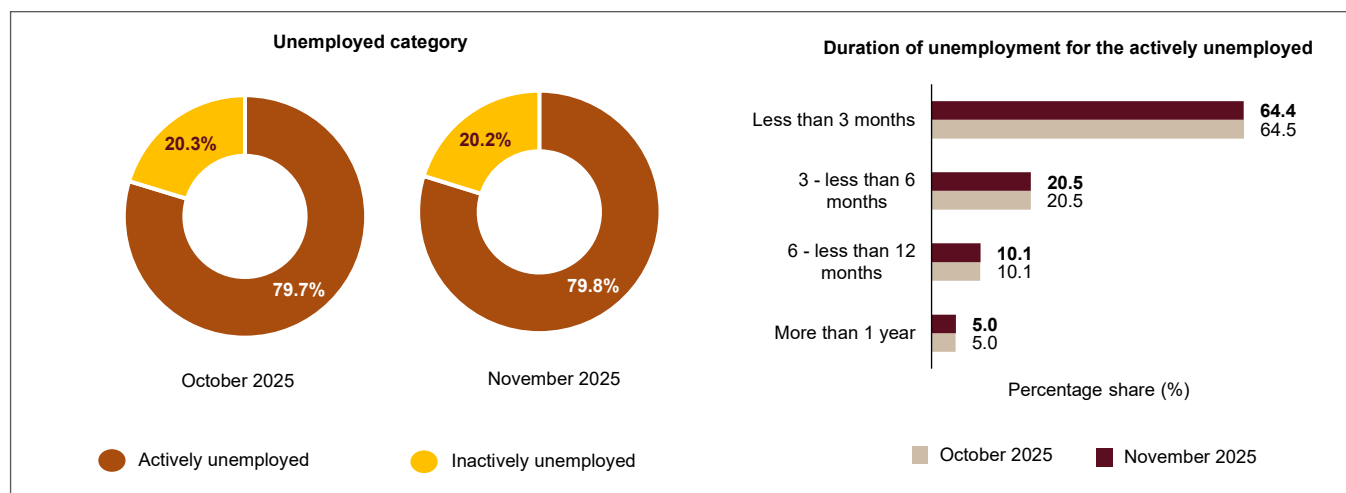


By unemployment category, **79.8 per cent** of the total unemployed persons in November 2025 were those who were actively seeking jobs, or the **actively unemployed**. This category edged down by **0.1 per cent (-0.3 thousand persons)** to **413.5 thousand persons** (October 2025: 413.8 thousand persons). Among the actively unemployed, **64.4 per cent** were those who were **unemployed for less than three months**, while those who had been **unemployed for more than a year⁶** comprised **5.0 per cent**.

Likewise, those who believed that no jobs were available, or the **inactively unemployed**, decreased by **0.2 per cent (-0.2 thousand persons)** to record **104.9 thousand persons** (October 2025: 105.1 thousand persons). This group accounted for **20.2 per cent** of the total unemployed persons, as shown in **Chart 4**.

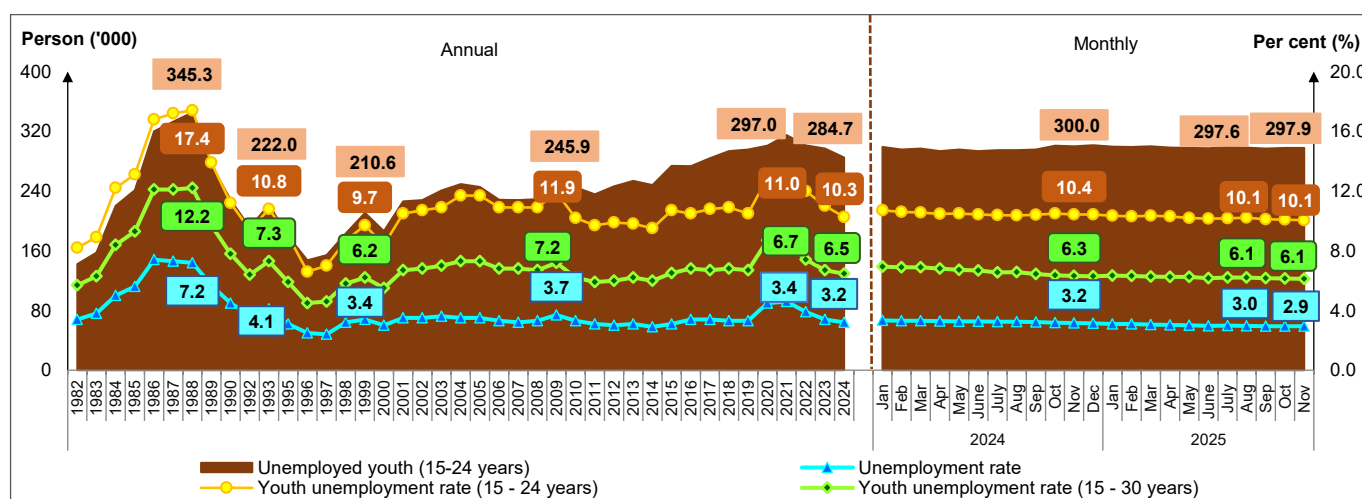
⁶ Referring to a person who has been unemployed for one year or longer (Source: KILM: Long-term unemployment)
https://www.ilo.org/wcmsp5/groups/public/---dgreports/---stat/documents/publication/wcms_422451.pdf

Chart 4: Unemployed category and duration of unemployment for the actively unemployed, October and November 2025



The youth unemployment rate for those aged **15 to 24 years** in November 2025 remained at **10.1 per cent**, registering **297.9 thousand unemployed youths** (October 2025: 297.6 thousand persons). On the same note, the unemployment rate among youth aged **15 to 30 years** stood at **6.1 per cent**, with **398.0 thousand unemployed youths** (October 2025: 398.5 thousand persons) [Chart 5].

Chart 5: The number of unemployed persons and unemployment rate by selected age groups, 1982 - 2024 and January 2024 - November 2025



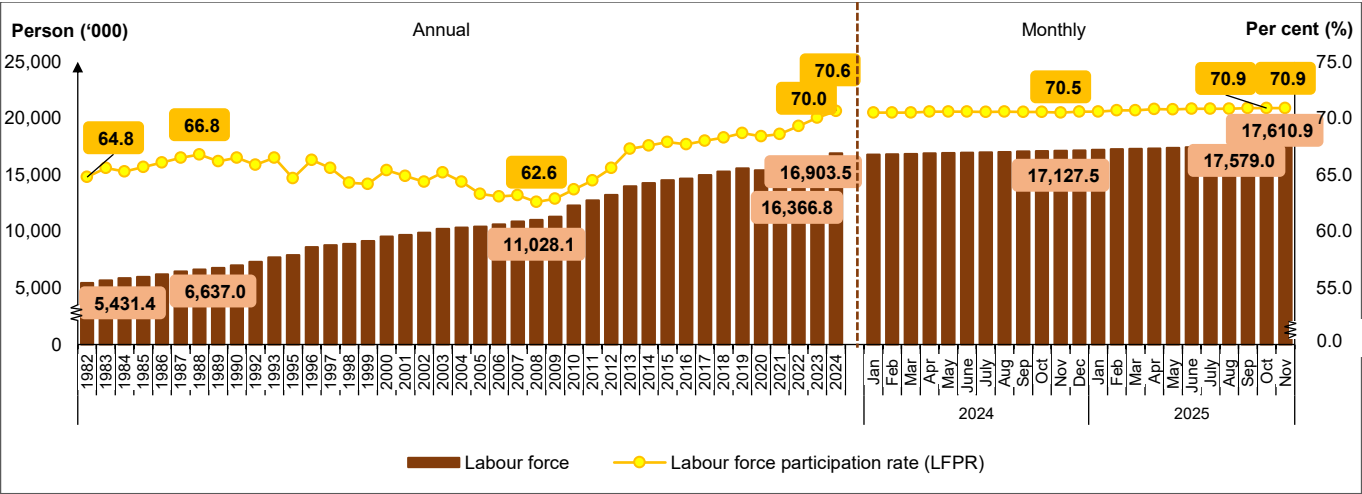
4 LABOUR FORCE

The LFPR for November 2025 remained unchanged at 70.9 per cent

The **labour force** continued trending upward in November 2025, registering a month-on-month increase of **0.2 per cent (+31.9 thousand persons)** to **17.61 million persons** (October 2025: 17.58 million persons). The **labour force participation rate (LFPR)** for November remained unchanged at **70.9 per cent**, as recorded in October 2025. In seasonally adjusted estimates, the labour force sustained its positive growth, rising by 0.2 per cent, with a higher LFPR at 71.0 per cent.

Compared with one year earlier, the labour force went up by 2.8 per cent, the equivalent of an additional 483.4 thousand persons (November 2024: 17.13 million persons). Consequently, the LFPR increased by 0.4 percentage points from 70.5 per cent recorded in November 2024 [Chart 6].

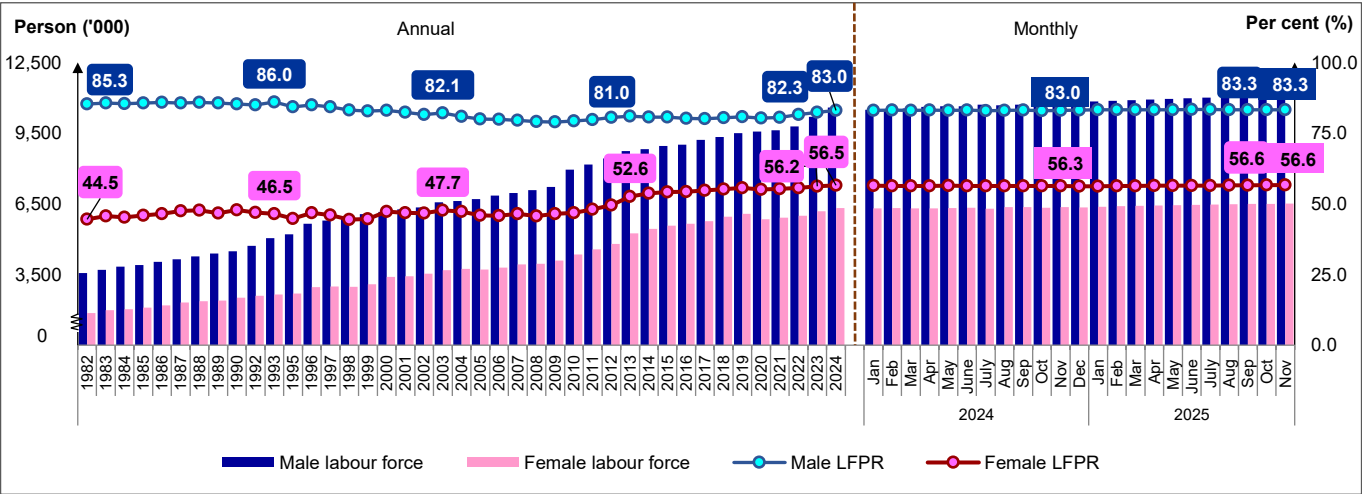
Chart 6: Labour force and LFPR, 1982 - 2024 and January 2024 - November 2025



During the month, both male and female labour forces continued their upward trend. The **male labour force** increased to **11.10 million persons** (October 2025: 11.08 million persons), and the **female labour force** rose to **6.51 million persons** (October 2025: 6.50 million persons). As for the LFPR, both the **male** and **female LFPR** remained unchanged as in the previous month, with the **male LFPR** at **83.3 per cent**, while the **female LFPR** was at **56.6 per cent**.

In comparison with the same month of the previous year, the male labour force edged up by 3.1 per cent from 10.76 million persons, whereas the female labour force rose by 2.3 per cent from 6.36 million persons. Therefore, the LFPR for males and females went up by 0.3 percentage points from 83.0 per cent and 56.3 per cent, respectively [Chart 7].

Chart 7: Labour force and LFPR by sex, 1982 - 2024 and January 2024 - November 2025



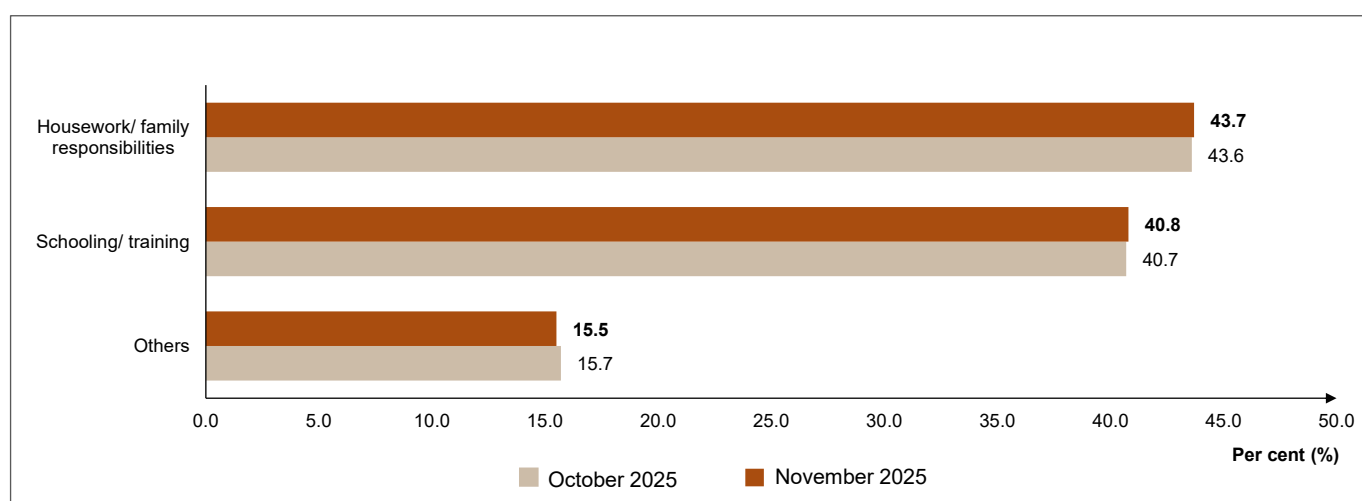
5 OUTSIDE LABOUR FORCE

Housework/ family responsibilities were the largest component of the outside labour force

The number of persons **outside the labour force** during the month increased slightly by **0.01 per cent (+0.7 thousand persons)** to **7.22 million persons** (October 2025: 7.22 million persons). On a year-on-year basis, the number rose by 1.0 per cent (+68.6 thousand persons) compared with 7.15 million persons in November 2024.

Housework/ family responsibilities were the largest component of the outside labour force, with a share of **43.7 per cent**, followed by individuals engaged in **schooling/ training** category at **40.8 per cent [Chart 8]**.

Chart 8: Share of outside labour force by reasons for not seeking work, October and November 2025



6 LOOKING AHEAD

Malaysia's economic position is seen to remain resilient in November 2025, supported by a continued trade surplus, strong exports, and financial stability. The country's economy is also expected to grow moderately, driven by robust domestic demand and private investment. Meanwhile, the export sector is projected to remain positive despite slower global demand as a result of market diversification strategies⁷. Major infrastructure projects in Sabah, Sarawak, and Peninsular Malaysia are also expected to continue stimulating the economy and generating employment opportunities. Investments in renewable energy and digitalisation are anticipated to enhance Malaysia's competitiveness within the ASEAN region⁸. Therefore, the labour market will continue to benefit through the creation of new jobs, upskilling of the workforce, and more balanced regional development.

As 2026 approaches, Malaysia's economy is expected to be driven by high-technology manufacturing, inclusive tourism, and green energy. The electrical and electronics (E&E) industry remains the largest contributor to Malaysia's exports, supported by global demand for semiconductors and high-tech components⁹. In addition, the increasing automation and digitalisation of factories are anticipated to generate demand for skilled workers in engineering, robotics, and data analytics. Consequently, the

⁷ <https://www.bharian.com.my/bisnes/lain-lain/2025/12/1486998/nilai-perdagangan-eksport-malaysia-terus-melonjak-pada-november>

⁸ <https://www.astroawani.com/berita-bisnes/belanjawan-2026-rm2-bilion-perkukuh-infrastruktur-digital-semenanjung-sabah-dan-sarawak-542350>

⁹ <https://www.bernama.com/bm/news.php?id=2506925>

country's labour market is anticipated to shift from low-skilled to high-skilled employment, thereby boosting workforce productivity.

In addition, post-pandemic recovery and the promotion of Malaysia as a halal-friendly and ecotourism destination are expected to boost tourist arrivals into the country. This, in turn, will create job opportunities in the hospitality, transportation, food & beverage, and creative services sectors. Accordingly, the country's labour market will also benefit from the rise in service-oriented employment, particularly in states such as Sabah, Sarawak, and Langkawi.

Furthermore, investments in renewable energy such as solar, hydro, and wind are expected to increase in line with Malaysia's commitment to the green and sustainability agenda. These green energy projects are anticipated to create job opportunities in technical fields, research, and project management¹⁰. As a result, the country's labour market will continue to be strengthened with the emergence of sustainability-based jobs, thus positioning Malaysia as a competitive player in the ASEAN region.

In line with this performance, Malaysia remains in a stable and competitive position compared to other ASEAN countries, with a focus on human capital development and strategic sectors. The country's labour market is also expected to remain stable and continue to grow positively in the coming months, with new job opportunities emerging in strategic industries¹¹. Moreover, workforce skills will be further enhanced through reskilling and upskilling initiatives¹². At the same time, more balanced regional development is anticipated, with employment opportunities expanding into rural areas¹³. Therefore, overall, Malaysia's labour market is forecast to remain competitive, inclusive, and resilient in addressing global challenges, while leveraging opportunities from digital transformation and the green agenda.

¹⁰ <https://theedgemaalaysia.com/node/739658>

¹¹ <https://www.bernama.com/bm/news.php?id=2478340>

¹² <https://belanjawan.mof.gov.my/pdf/belanjawan2025/ucapan/ub25.pdf>

¹³ https://rmk13.ekonomi.gov.my/wp-content/uploads/2025/07/Buku_Utama_RMK13.pdf

This page is deliberately left blank

TABLES

LABOUR FORCE, MALAYSIA
NOVEMBER 2025

This page is deliberately left blank

Table A: Principal statistics of the labour force, Malaysia, 1982 - 2024

Time Series	('000)				(%)		
	Labour Force	Employed	Unemployed	Outside Labour Force	Labour Force Participation Rate	Employment to Population Ratio	Unemployment Rate
1982	5,431.4	5,249.0	182.4	2,944.6	64.8	62.7	3.4
1983	5,671.8	5,457.0	214.9	2,969.4	65.6	63.2	3.8
1984	5,862.5	5,566.7	295.8	3,119.6	65.3	62.0	5.0
1985	5,990.1	5,653.4	336.8	3,124.9	65.7	62.0	5.6
1986	6,222.1	5,760.1	461.9	3,188.3	66.1	61.2	7.4
1987	6,456.8	5,983.9	472.9	3,246.1	66.5	61.7	7.3
1988	6,637.0	6,157.2	479.8	3,301.5	66.8	62.0	7.2
1989	6,779.4	6,390.9	388.5	3,463.5	66.2	62.4	5.7
1990	7,000.2	6,685.0	315.2	3,519.7	66.5	63.6	4.5
1992	7,319.0	7,047.8	271.2	3,783.6	65.9	63.5	3.7
1993	7,700.1	7,383.4	316.8	3,874.9	66.5	63.8	4.1
1995	7,893.1	7,645.0	248.1	4,297.7	64.7	62.7	3.1
1996	8,616.0	8,399.3	216.8	4,379.0	66.3	64.6	2.5
1997	8,784.0	8,569.2	214.9	4,605.1	65.6	64.0	2.4
1998	8,883.6	8,599.6	284.0	4,934.0	64.3	62.2	3.2
1999	9,151.5	8,837.8	313.7	5,098.4	64.2	62.0	3.4
2000	9,556.1	9,269.2	286.9	5,065.1	65.4	63.4	3.0
2001	9,699.4	9,357.0	342.4	5,239.9	64.9	62.6	3.5
2002	9,886.2	9,542.6	343.5	5,473.8	64.4	62.1	3.5
2003	10,239.6	9,869.7	369.8	5,458.6	65.2	62.9	3.6
2004	10,346.2	9,979.5	366.6	5,730.5	64.4	62.1	3.5
2005	10,413.4	10,045.4	368.1	6,048.2	63.3	61.0	3.5
2006	10,628.9	10,275.4	353.6	6,205.1	63.1	61.0	3.3
2007	10,889.5	10,538.1	351.4	6,330.1	63.2	61.2	3.2
2008	11,028.1	10,659.6	368.5	6,575.7	62.6	60.6	3.3
2009	11,315.3	10,897.3	418.0	6,665.7	62.9	60.6	3.7
2010	12,303.9	11,899.5	404.4	7,023.0	63.7	61.6	3.3
2011	12,740.7	12,351.5	389.2	7,023.3	64.5	62.5	3.1
2012	13,221.7	12,820.5	401.2	6,927.4	65.6	63.6	3.0
2013	13,980.5	13,545.4	435.1	6,781.2	67.3	65.2	3.1
2014	14,263.6	13,852.6	411.1	6,821.0	67.6	65.7	2.9
2015	14,518.0	14,067.7	450.3	6,869.9	67.9	65.8	3.1
2016	14,667.8	14,163.7	504.1	6,987.6	67.7	65.4	3.4
2017	14,980.1	14,476.8	503.3	7,065.0	68.0	65.7	3.4
2018	15,280.3	14,776.0	504.3	7,094.4	68.3	66.0	3.3
2019	15,581.6	15,073.4	508.2	7,103.5	68.7	66.4	3.3
2020	15,406.0	14,719.4	686.6	7,105.2	68.4	65.4	4.5
2021	15,532.8	14,825.2	707.6	7,102.3	68.6	65.5	4.6
2022	15,769.7	15,155.2	614.5	7,000.7	69.3	66.6	3.9
2023	16,366.8	15,813.4	553.4	6,997.8	70.0	67.7	3.4
2024	16,903.5	16,369.4	534.1	7,022.4	70.6	68.4	3.2

Notes:

1. The Labour Force Survey statistics for 2019 and preceding years are estimated based on the Population and Housing Census of Malaysia 2010
2. The Labour Force Survey statistics for 2020 and onwards are estimated based on the Population and Housing Census of Malaysia 2020

Table B: Principal statistics of the labour force, Malaysia, First Quarter 2010 - Third Quarter 2025

Time Series	('000)				(%)		
	Labour Force	Employed	Unemployed	Outside Labour Force	Labour Force Participation Rate	Employment to Population Ratio	Unemployment Rate
2010							
Q1	12,239.3	11,801.2	438.1	7,030.8	63.5	61.2	3.6
Q2	12,304.9	11,900.6	404.3	7,047.5	63.6	61.5	3.3
Q3	12,354.6	11,961.3	393.3	7,073.5	63.6	61.6	3.2
Q4	12,522.4	12,137.4	385.0	6,992.9	64.2	62.2	3.1
2011							
Q1	12,718.3	12,333.5	384.8	7,004.9	64.5	62.5	3.0
Q2	12,756.0	12,367.4	388.6	7,048.8	64.4	62.4	3.0
Q3	12,889.0	12,493.0	396.0	6,977.2	64.9	62.9	3.1
Q4	12,842.5	12,447.9	394.7	7,098.6	64.4	62.4	3.1
2012							
Q1	13,169.2	12,765.2	404.0	6,915.1	65.6	63.6	3.1
Q2	13,237.0	12,837.1	400.0	6,946.1	65.6	63.6	3.0
Q3	13,401.7	13,005.4	396.3	6,897.9	66.0	64.1	3.0
Q4	13,376.2	12,971.2	405.0	7,062.8	65.4	63.5	3.0
2013							
Q1	13,539.5	13,118.0	421.5	7,090.0	65.6	63.6	3.1
Q2	13,945.1	13,524.1	421.0	6,819.6	67.2	65.1	3.0
Q3	14,214.2	13,776.0	438.3	6,613.0	68.2	66.1	3.1
Q4	14,195.1	13,739.5	455.6	6,730.7	67.8	65.7	3.2
2014							
Q1	14,230.8	13,791.4	439.4	6,805.9	67.6	65.6	3.1
Q2	14,296.1	13,888.5	407.6	6,793.0	67.8	65.9	2.9
Q3	14,346.9	13,960.6	386.3	6,810.3	67.8	66.0	2.7
Q4	14,403.3	13,998.7	404.6	6,860.9	67.7	65.8	2.8
2015							
Q1	14,544.8	14,091.0	453.9	6,798.5	68.1	66.0	3.1
Q2	14,535.6	14,087.8	447.8	6,897.9	67.8	65.7	3.1
Q3	14,561.0	14,093.7	467.3	6,930.6	67.8	65.6	3.2
Q4	14,600.2	14,127.9	472.3	6,952.7	67.7	65.6	3.2
2016							
Q1	14,596.8	14,095.8	501.0	7,011.5	67.6	65.2	3.4
Q2	14,665.4	14,161.5	503.9	7,026.0	67.6	65.3	3.4
Q3	14,710.6	14,202.0	508.5	7,044.6	67.6	65.3	3.5
Q4	14,771.4	14,260.6	510.8	7,071.7	67.6	65.3	3.5
2017							
Q1	14,870.1	14,355.9	514.2	7,093.8	67.7	65.4	3.5
Q2	14,926.4	14,414.8	511.6	7,123.3	67.7	65.4	3.4
Q3	15,000.2	14,484.0	516.2	7,091.0	67.9	65.6	3.4
Q4	15,088.3	14,580.5	507.8	7,085.0	68.0	65.8	3.4
2018							
Q1	15,192.4	14,683.6	508.9	7,093.7	68.2	65.9	3.3
Q2	15,278.3	14,767.2	511.1	7,073.4	68.4	66.1	3.3
Q3	15,381.3	14,856.8	524.4	7,077.9	68.5	66.2	3.4
Q4	15,449.9	14,933.4	516.5	7,070.7	68.6	66.3	3.3
2019							
Q1	15,526.8	15,010.2	516.6	7,064.2	68.7	66.4	3.3
Q2	15,598.8	15,078.2	520.6	7,088.1	68.8	66.5	3.3
Q3	15,674.3	15,162.1	512.1	7,088.7	68.9	66.6	3.3
Q4	15,766.7	15,254.5	512.2	7,066.1	69.1	66.8	3.2
2020							
Q1	15,790.1	15,243.5	546.6	7,163.1	68.8	66.4	3.5
Q2	15,675.5	14,883.7	791.8	7,350.5	68.1	64.6	5.1
Q3	15,840.6	15,095.6	745.0	7,324.6	68.4	65.2	4.7
Q4	15,922.3	15,161.6	760.7	7,318.4	68.5	65.2	4.8

Table B: Principal statistics of the labour force, Malaysia, First Quarter 2010 - Third Quarter 2025

('000)					(%)		
Time Series	Labour Force	Employed	Unemployed	Outside Labour Force	Labour Force Participation Rate	Employment to Population Ratio	Unemployment Rate
2021							
Q1	16,008.4	15,236.5	771.8	7,316.0	68.6	65.3	4.8
Q2	15,972.2	15,207.3	764.9	7,424.9	68.3	65.0	4.8
Q3	16,021.0	15,274.8	746.2	7,430.1	68.3	65.1	4.7
Q4	16,135.0	15,440.7	694.4	7,361.5	68.7	65.7	4.3
2022							
Q1	16,246.1	15,574.9	671.2	7,289.9	69.0	66.2	4.1
Q2	16,343.3	15,701.2	642.0	7,258.5	69.2	66.5	3.9
Q3	16,442.9	15,831.1	611.8	7,250.6	69.4	66.8	3.7
Q4	16,542.2	15,941.7	600.5	7,246.1	69.5	67.0	3.6
2023							
Q1	16,648.9	16,062.0	586.9	7,215.7	69.8	67.3	3.5
Q2	16,727.4	16,146.1	581.4	7,180.2	70.0	67.5	3.5
Q3	16,824.0	16,250.9	573.1	7,182.3	70.1	67.7	3.4
Q4	16,911.7	16,346.7	565.0	7,197.6	70.1	67.8	3.3
2024^a							
Q1	16,770.6	16,216.8	553.8	7,021.1	70.5	68.2	3.3
Q2	16,913.0	16,368.3	544.6	7,016.2	70.7	68.4	3.2
Q3	16,996.7	16,455.7	541.0	7,070.9	70.6	68.4	3.2
Q4	17,097.9	16,559.1	538.7	7,110.7	70.6	68.4	3.2
2025							
Q1	17,229.3	16,703.0	526.3	7,126.1	70.7	68.6	3.1
Q2	17,369.9	16,849.0	520.9	7,154.9	70.8	68.7	3.0
Q3	17,486.6	16,966.7	519.9	7,182.6	70.9	68.8	3.0

Note:

1. The quarterly Labour Force Survey statistics until year 2023 are estimated based on the Population and Housing Census of Malaysia 2010
2. ^a The Labour Force Survey statistics from the first quarter of 2024 onwards are estimated based on the Population and Housing Census of Malaysia 2020

Table B1 : Employed person working less than 30 hours per week by sex and age group, Malaysia, First Quarter 2017 - Third Quarter 2025

('000)

Time Series	Total	Sex		Age Group			
		Male	Female	15-24	25-34	35-44	45 and above
2017							
Q1	415.5	177.3	238.2	57.4	79.7	90.8	187.6
Q2	396.8	168.8	228.0	52.8	79.0	95.1	170.0
Q3	393.0	163.2	229.7	57.3	91.1	81.4	163.1
Q4	419.3	173.1	246.2	60.2	105.4	84.3	169.4
2018							
Q1	462.3	172.9	289.3	61.2	119.5	98.7	182.9
Q2	497.2	207.7	289.5	75.5	132.4	101.3	188.0
Q3	442.4	172.7	269.7	56.4	96.7	98.3	191.0
Q4	370.0	140.9	229.0	39.2	80.4	78.9	171.4
2019							
Q1	352.6	143.7	209.0	52.2	90.9	68.9	140.7
Q2	374.3	171.5	202.8	43.6	84.1	87.8	158.8
Q3	326.6	118.9	207.6	42.5	73.6	79.7	130.8
Q4	304.0	112.3	191.8	39.1	62.9	72.8	129.3
2020							
Q1	667.5	320.1	347.4	91.0	189.1	146.5	240.9
Q2	789.6	444.0	345.7	134.6	229.1	182.0	244.0
Q3	403.8	151.4	252.4	116.1	118.0	72.1	97.6
Q4	533.7	345.6	188.0	165.5	189.5	71.0	107.6
2021							
Q1	441.9	281.3	160.5	57.0	209.4	106.3	69.2
Q2	474.1	317.8	156.3	102.2	110.1	95.9	165.9
Q3	464.6	282.9	181.6	69.0	166.4	123.7	105.4
Q4	393.8	137.6	256.2	87.0	108.4	97.5	100.9
2022							
Q1	336.3	112.1	224.1	39.1	103.6	77.8	115.8
Q2	324.5	154.5	170.0	76.4	94.3	63.0	90.8
Q3	287.2	132.9	154.3	35.3	99.5	68.4	84.0
Q4	268.5	115.4	153.0	46.1	88.0	56.2	78.3
2023							
Q1	274.2	114.2	160.0	37.4	94.4	46.5	95.8
Q2	280.4	120.2	160.2	54.0	85.3	58.6	82.5
Q3	284.8	122.0	162.8	41.5	113.2	49.6	80.4
Q4	286.1	113.6	172.5	49.1	108.7	43.3	85.1
2024^a							
Q1	272.9	122.2	150.7	33.9	77.8	62.6	98.6
Q2	269.9	121.5	148.4	55.9	65.2	60.0	88.9
Q3	264.2	116.7	147.5	43.0	74.1	57.4	89.7
Q4	257.9	113.5	144.4	64.5	59.8	37.9	95.8
2025							
Q1	242.7	106.3	136.5	70.4	37.7	71.4	63.3
Q2	241.0	110.5	130.5	41.7	62.4	62.4	74.4
Q3	230.9	107.5	123.4	58.8	39.3	63.7	69.2

Note:

1. The quarterly Labour Force Survey statistics until year 2023 are estimated based on the Population and Housing Census of Malaysia 2010

2. ^a The Labour Force Survey statistics from the first quarter of 2024 onwards are estimated based on the Population and Housing Census of Malaysia 2020

Table B2 : Time-related underemployment by sex and age group, Malaysia, First Quarter 2017 - Third Quarter 2025

('000)

Time Series	Total	Sex		Age Group			
		Male	Female	15-24	25-34	35-44	45 and above
2017							
Q1	211.8	105.9	105.8	36.8	51.0	48.6	75.4
Q2	195.4	97.7	97.8	34.7	45.2	48.9	66.6
Q3	224.8	109.1	115.7	46.3	59.3	49.8	69.4
Q4	238.5	115.3	123.2	45.7	69.4	44.9	78.5
2018							
Q1	242.5	102.4	141.0	37.3	74.1	52.3	79.7
Q2	231.7	108.1	123.5	40.2	65.8	43.2	82.5
Q3	235.5	116.5	119.0	43.4	54.4	49.4	88.3
Q4	204.1	88.1	115.9	30.8	47.5	44.0	81.7
2019							
Q1	210.5	98.0	112.5	43.6	61.4	36.9	68.6
Q2	204.5	107.2	97.2	32.0	53.8	45.7	73.0
Q3	178.7	70.4	108.2	28.6	44.8	50.9	54.4
Q4	170.7	69.2	101.5	28.7	44.2	40.6	57.1
2020							
Q1	383.2	183.2	199.9	63.2	114.1	82.4	123.5
Q2	413.5	257.6	156.0	76.3	99.3	106.1	131.9
Q3	300.8	102.3	198.5	108.4	97.2	47.4	47.8
Q4	369.1	267.8	101.3	130.3	117.4	53.1	68.4
2021							
Q1	310.5	226.7	83.8	46.4	159.3	67.2	37.6
Q2	329.7	236.1	93.5	86.6	82.6	46.6	113.8
Q3	326.2	232.2	93.9	40.4	137.0	87.7	61.0
Q4	293.1	101.2	191.9	80.8	78.9	70.2	63.2
2022							
Q1	245.1	71.3	173.8	21.8	76.1	62.6	84.5
Q2	212.8	111.6	101.3	64.5	59.8	37.0	51.6
Q3	186.8	92.3	94.5	16.7	67.4	49.0	53.7
Q4	167.4	79.3	88.1	29.9	63.8	32.5	41.2
2023							
Q1	174.6	78.7	95.9	30.2	66.4	25.2	52.8
Q2	186.3	86.4	99.9	39.5	62.6	34.4	49.8
Q3	189.0	88.1	100.8	34.4	79.0	32.6	42.9
Q4	181.6	82.7	98.9	26.5	81.1	28.4	45.6
2024^a							
Q1	161.8	76.6	85.2	22.6	55.7	30.9	52.6
Q2	157.4	74.0	83.3	23.3	50.1	38.9	45.1
Q3	155.9	73.9	82.0	27.2	48.1	25.2	55.4
Q4	152.7	70.9	81.8	32.5	39.6	23.9	56.8
2025							
Q1	146.9	68.9	78.0	50.4	28.6	38.9	29.1
Q2	141.0	64.1	76.9	34.1	41.7	33.9	31.3
Q3	133.3	62.0	71.3	46.1	25.9	25.9	35.3

Note:

1. The quarterly Labour Force Survey statistics until year 2023 are estimated based on the Population and Housing Census of Malaysia 2010
2. ^a The Labour Force Survey statistics from the first quarter of 2024 onwards are estimated based on the Population and Housing Census of Malaysia 2020

Table B3 : Skill-related underemployment by sex and age group, Malaysia, First Quarter 2017 - Third Quarter 2025

('000)

Time Series	Total	Sex		Age Group			
		Male	Female	15-24	25-34	35-44	45 and above
2017							
Q1	1,182.9	567.0	615.9	280.8	569.0	209.3	123.8
Q2	1,280.6	584.9	695.7	317.9	587.7	226.9	148.1
Q3	1,311.6	623.9	687.7	306.1	632.6	227.4	145.5
Q4	1,332.8	648.4	684.4	303.2	631.8	254.8	142.9
2018							
Q1	1,306.9	629.2	677.7	279.2	629.2	259.0	139.5
Q2	1,408.1	647.2	760.9	314.5	687.4	257.7	148.4
Q3	1,446.3	704.1	742.2	351.3	683.3	266.9	144.8
Q4	1,404.0	667.8	736.2	337.2	679.1	245.4	142.3
2019							
Q1	1,460.8	673.2	787.6	329.5	696.4	263.0	172.0
Q2	1,417.2	665.3	751.9	338.6	666.0	259.7	152.8
Q3	1,554.5	699.3	855.2	393.5	705.8	279.1	176.0
Q4	1,540.9	746.8	794.1	348.4	732.4	287.4	172.7
2020							
Q1	1,637.3	815.1	822.2	338.3	786.3	310.8	201.8
Q2	1,674.1	847.7	826.4	393.7	701.9	331.6	246.9
Q3	1,762.7	865.9	896.9	405.1	811.4	355.3	190.9
Q4	1,886.8	1,066.6	820.2	353.5	862.6	443.0	227.6
2021							
Q1	1,899.9	951.5	948.4	437.2	848.4	401.7	212.5
Q2	1,852.5	949.0	903.5	336.9	776.0	426.1	313.5
Q3	1,873.8	931.7	942.2	426.8	835.3	392.0	219.7
Q4	1,838.3	877.1	961.2	309.0	816.4	454.6	258.3
2022							
Q1	1,810.1	874.4	935.6	364.9	821.3	428.2	195.7
Q2	1,799.6	892.3	907.3	356.3	799.4	433.3	210.6
Q3	1,839.6	857.9	981.7	344.1	861.4	432.2	201.9
Q4	1,891.4	1,022.0	869.5	326.3	894.9	476.0	194.2
2023							
Q1	1,907.2	944.0	963.3	373.9	879.1	447.4	206.8
Q2	1,914.6	873.1	1,041.5	421.3	867.5	421.0	204.8
Q3	1,922.7	941.3	981.4	425.5	816.1	457.8	223.3
Q4	1,937.1	996.2	940.9	400.2	815.3	493.7	227.9
2024^a							
Q1	1,920.8	864.7	1,056.1	352.6	735.2	522.5	310.6
Q2	1,923.1	868.7	1,054.5	401.5	732.7	539.3	249.6
Q3	1,942.4	879.4	1,063.0	390.7	808.1	498.3	245.3
Q4	1,946.3	880.7	1,065.5	373.2	704.2	495.7	373.1
2025							
Q1	1,953.7	885.6	1,068.1	393.5	794.0	492.6	273.6
Q2	1,955.6	882.9	1,072.7	432.1	806.8	490.3	226.3
Q3	1,961.5	884.3	1,077.2	466.5	786.8	447.8	260.4

Note:

1. The quarterly Labour Force Survey statistics until year 2023 are estimated based on the Population and Housing Census of Malaysia 2010
2. ^a The Labour Force Survey statistics from the first quarter of 2024 onwards are estimated based on the Population and Housing Census of Malaysia 2020

Table C: Principal statistics of the labour force, Malaysia, January 2010 - November 2025

	('000)				(%)		
Time Series	Labour Force	Employed	Unemployed	Outside Labour Force	Labour Force Participation Rate	Employment to Population Ratio	Unemployment Rate
2010							
January	12,367.9	11,931.2	436.7	6,927.5	64.1	61.8	3.5
February	12,059.8	11,632.3	427.4	7,225.1	62.5	60.3	3.5
March	12,324.2	11,895.9	428.3	6,993.0	63.8	61.6	3.5
April	12,512.0	12,133.5	378.5	6,894.5	64.5	62.5	3.0
May	12,197.6	11,798.9	398.7	7,186.0	62.9	60.9	3.3
June	12,331.8	11,882.2	449.6	7,065.0	63.6	61.3	3.6
July	12,516.2	12,099.5	416.7	6,900.5	64.5	62.3	3.3
August	12,320.9	11,936.5	384.3	7,157.9	63.3	61.3	3.1
September	12,289.9	11,912.1	377.8	7,194.4	63.1	61.1	3.1
October	12,689.5	12,342.6	346.8	6,846.7	65.0	63.2	2.7
November	12,277.5	11,874.1	403.4	7,298.3	62.7	60.7	3.3
December	12,822.3	12,418.3	404.1	6,722.3	65.6	63.5	3.2
2011							
January	12,804.2	12,376.0	428.2	6,881.6	65.0	62.9	3.3
February	12,618.9	12,245.3	373.6	7,110.3	64.0	62.1	3.0
March	12,862.2	12,491.8	370.4	6,940.1	65.0	63.1	2.9
April	12,921.7	12,537.1	384.6	6,930.6	65.1	63.2	3.0
May	12,726.6	12,330.3	396.3	7,133.2	64.1	62.1	3.1
June	12,782.7	12,372.6	410.1	7,073.7	64.4	62.3	3.2
July	12,967.4	12,581.5	385.9	6,920.5	65.2	63.3	3.0
August	12,887.9	12,486.7	401.2	7,038.6	64.7	62.7	3.1
September	12,875.9	12,456.9	419.0	7,032.2	64.7	62.6	3.3
October	12,938.2	12,550.1	388.1	7,045.7	64.7	62.8	3.0
November	12,722.4	12,323.7	398.7	7,245.7	63.7	61.7	3.1
December	13,092.1	12,687.2	404.9	6,997.3	65.2	63.2	3.1
2012							
January	13,191.6	12,781.3	410.4	6,878.5	65.7	63.7	3.1
February	13,054.5	12,645.6	408.9	7,042.3	65.0	62.9	3.1
March	13,295.4	12,893.8	401.6	6,897.3	65.8	63.9	3.0
April	13,331.8	12,936.9	394.8	6,851.3	66.1	64.1	3.0
May	13,245.6	12,861.2	384.4	6,952.9	65.6	63.7	2.9
June	13,232.5	12,811.4	421.0	7,013.7	65.4	63.3	3.2
July	13,511.7	13,093.3	418.4	6,777.3	66.6	64.5	3.1
August	13,313.6	12,963.4	350.2	7,039.9	65.4	63.7	2.6
September	13,408.5	12,984.5	424.0	6,993.2	65.7	63.6	3.2
October	13,341.4	12,908.9	432.6	7,056.2	65.4	63.3	3.2
November	13,429.2	13,044.6	384.6	7,094.6	65.4	63.6	2.9
December	13,538.6	13,114.3	424.3	7,060.6	65.7	63.7	3.1
2013							
January	13,569.6	13,109.8	459.8	7,035.5	65.9	63.6	3.4
February	13,598.8	13,195.9	402.9	7,119.8	65.6	63.7	3.0
March	13,684.4	13,241.7	442.6	7,116.7	65.8	63.7	3.2
April	13,835.7	13,422.9	412.8	6,922.7	66.7	64.7	3.0
May	13,815.3	13,368.9	446.4	7,005.6	66.4	64.2	3.2
June	14,217.1	13,816.9	400.2	6,668.6	68.1	66.2	2.8
July	14,194.6	13,763.0	431.6	6,655.9	68.1	66.0	3.0
August	14,176.6	13,734.2	442.4	6,689.8	67.9	65.8	3.1
September	14,309.4	13,859.5	449.9	6,557.3	68.6	66.4	3.1
October	14,169.2	13,699.1	470.1	6,746.3	67.7	65.5	3.3
November	14,220.9	13,730.4	490.5	6,716.2	67.9	65.6	3.4
December	14,276.5	13,836.2	440.3	6,724.3	68.0	65.9	3.1

Table C: Principal statistics of the labour force, Malaysia, January 2010 - November 2025

Time Series	('000)				(%)		
	Labour Force	Employed	Unemployed	Outside Labour Force	Labour Force Participation Rate	Employment to Population Ratio	Unemployment Rate
2014							
January	14,244.4	13,775.9	468.5	6,734.7	67.9	65.7	3.3
February	14,249.9	13,788.0	462.0	6,808.7	67.7	65.5	3.2
March	14,198.4	13,768.3	430.1	6,956.1	67.1	65.1	3.0
April	14,206.7	13,793.2	413.5	6,849.4	67.5	65.5	2.9
May	14,430.2	14,023.0	407.2	6,693.2	68.3	66.4	2.8
June	14,373.4	13,967.0	406.4	6,826.6	67.8	65.9	2.8
July	14,333.4	13,935.8	397.6	6,846.2	67.7	65.8	2.8
August	14,266.3	13,881.4	384.9	6,934.1	67.3	65.5	2.7
September	14,440.2	14,058.4	381.8	6,763.7	68.1	66.3	2.6
October	14,403.1	14,023.3	379.9	6,926.7	67.5	65.7	2.6
November	14,404.1	14,025.4	378.7	6,887.1	67.7	65.9	2.6
December	14,512.0	14,060.2	451.7	6,784.8	68.1	66.0	3.1
2015							
January	14,442.0	13,991.8	450.3	6,923.7	67.6	65.5	3.1
February	14,554.7	14,092.9	461.8	6,847.8	68.0	65.9	3.2
March	14,601.2	14,160.5	440.7	6,839.3	68.1	66.1	3.0
April	14,569.5	14,136.2	433.3	6,890.2	67.9	65.9	3.0
May	14,575.0	14,126.7	448.3	6,933.5	67.8	65.7	3.1
June	14,609.9	14,146.7	463.2	6,896.2	67.9	65.8	3.2
July	14,579.1	14,106.2	472.9	6,937.7	67.8	65.6	3.2
August	14,685.1	14,214.6	470.5	6,871.5	68.1	65.9	3.2
September	14,642.0	14,151.7	490.3	6,925.4	67.9	65.6	3.3
October	14,665.9	14,184.7	481.3	6,894.8	68.0	65.8	3.3
November	14,687.2	14,215.7	471.5	6,945.0	67.9	65.7	3.2
December	14,690.0	14,185.7	504.3	6,945.3	67.9	65.6	3.4
2016							
January	14,652.0	14,150.5	501.5	6,984.2	67.7	65.4	3.4
February	14,703.3	14,196.9	506.4	7,063.1	67.6	65.2	3.4
March	14,710.1	14,200.7	509.5	6,964.0	67.9	65.5	3.5
April	14,675.3	14,163.7	511.5	7,012.5	67.7	65.3	3.5
May	14,705.0	14,200.2	504.8	7,021.1	67.7	65.4	3.4
June	14,720.1	14,218.4	501.8	7,036.5	67.7	65.4	3.4
July	14,729.0	14,212.8	516.2	7,008.4	67.8	65.4	3.5
August	14,822.2	14,306.9	515.2	7,053.3	67.8	65.4	3.5
September	14,762.2	14,249.6	512.6	7,084.3	67.6	65.2	3.5
October	14,765.1	14,253.4	511.7	7,071.1	67.6	65.3	3.5
November	14,827.9	14,317.2	510.7	7,081.8	67.7	65.3	3.4
December	14,788.9	14,276.7	512.2	7,072.8	67.6	65.3	3.5
2017							
January	14,880.9	14,366.8	514.1	7,090.4	67.7	65.4	3.5
February	14,916.7	14,401.8	514.8	7,086.9	67.8	65.5	3.5
March	14,932.5	14,421.7	510.8	7,121.8	67.7	65.4	3.4
April	14,941.5	14,429.6	511.9	7,122.5	67.7	65.4	3.4
May	14,961.9	14,454.4	507.5	7,120.8	67.8	65.5	3.4
June	15,027.6	14,519.9	507.7	7,141.1	67.8	65.5	3.4
July	15,016.4	14,497.4	519.0	7,150.4	67.7	65.4	3.5
August	15,030.2	14,513.4	516.9	7,138.4	67.8	65.5	3.4
September	15,058.8	14,544.3	514.5	7,122.1	67.9	65.6	3.4
October	15,090.4	14,581.7	508.8	7,117.7	68.0	65.7	3.4
November	15,084.0	14,578.9	505.1	7,121.4	67.9	65.7	3.3
December	15,145.9	14,640.1	505.8	7,084.1	68.1	65.9	3.3

Table C: Principal statistics of the labour force, Malaysia, January 2010 - November 2025

Time Series	('000)				(%)		
	Labour Force	Employed	Unemployed	Outside Labour Force	Labour Force Participation Rate	Employment to Population Ratio	Unemployment Rate
2018							
January	15,187.0	14,670.5	516.5	7,074.8	68.2	65.9	3.4
February	15,230.0	14,721.5	508.5	7,112.3	68.2	65.9	3.3
March	15,241.2	14,732.5	508.7	7,115.0	68.2	65.9	3.3
April	15,313.1	14,803.1	510.0	7,130.9	68.2	66.0	3.3
May	15,357.5	14,852.6	504.8	7,097.1	68.4	66.1	3.3
June	15,379.0	14,863.2	515.8	7,062.2	68.5	66.2	3.4
July	15,401.0	14,882.4	518.6	7,044.5	68.6	66.3	3.4
August	15,421.4	14,896.5	525.0	7,133.9	68.4	66.0	3.4
September	15,442.9	14,926.5	516.4	7,096.8	68.5	66.2	3.3
October	15,450.0	14,937.1	512.9	7,093.7	68.5	66.3	3.3
November	15,457.5	14,941.3	516.2	7,151.2	68.4	66.1	3.3
December	15,500.1	14,986.0	514.2	7,120.1	68.5	66.3	3.3
2019							
January	15,508.5	14,992.8	515.6	7,095.9	68.6	66.3	3.3
February	15,543.2	15,026.8	516.4	7,145.9	68.5	66.2	3.3
March	15,556.6	15,035.2	521.3	7,169.4	68.5	66.2	3.4
April	15,613.1	15,089.8	523.3	7,184.4	68.5	66.2	3.4
May	15,642.3	15,122.5	519.8	7,190.0	68.5	66.2	3.3
June	15,655.9	15,134.6	521.4	7,156.7	68.6	66.3	3.3
July	15,704.6	15,179.8	524.8	7,207.7	68.5	66.3	3.3
August	15,706.0	15,185.8	520.2	7,172.4	68.6	66.4	3.3
September	15,751.2	15,229.9	521.4	7,159.8	68.7	66.5	3.3
October	15,777.7	15,265.6	512.1	7,175.0	68.7	66.5	3.2
November	15,828.9	15,315.0	513.9	7,174.2	68.8	66.6	3.2
December	15,803.0	15,286.0	517.0	7,129.8	68.9	66.7	3.3
2020							
January	15,829.3	15,317.6	511.7	7,128.9	68.9	66.7	3.2
February	15,869.8	15,344.5	525.2	7,224.0	68.7	66.4	3.3
March	15,842.9	15,232.4	610.5	7,239.8	68.6	66.0	3.9
April	15,712.2	14,933.4	778.8	7,345.1	68.1	64.8	5.0
May	15,714.0	14,887.9	826.1	7,392.1	68.0	64.4	5.3
June	15,763.5	14,990.2	773.2	7,398.5	68.1	64.7	4.9
July	15,818.5	15,073.4	745.1	7,399.8	68.1	64.9	4.7
August	15,895.1	15,153.5	741.6	7,351.5	68.4	65.2	4.7
September	15,930.6	15,193.1	737.5	7,359.8	68.4	65.2	4.6
October	15,955.3	15,207.1	748.2	7,347.7	68.5	65.3	4.7
November	15,960.5	15,196.1	764.4	7,374.8	68.4	65.1	4.8
December	15,988.3	15,215.4	772.9	7,372.2	68.4	65.1	4.8
2021							
January	16,019.8	15,237.3	782.5	7,366.2	68.5	65.2	4.9
February	16,048.2	15,270.6	777.5	7,371.4	68.5	65.2	4.8
March	16,082.5	15,329.3	753.2	7,363.7	68.6	65.4	4.7
April	16,094.7	15,352.0	742.7	7,376.8	68.6	65.4	4.6
May	16,098.9	15,370.8	728.1	7,398.0	68.5	65.4	4.5
June	16,066.2	15,297.5	768.7	7,456.8	68.3	65.0	4.8
July	16,072.9	15,294.8	778.2	7,475.4	68.3	65.0	4.8
August	16,125.4	15,376.6	748.8	7,448.5	68.4	65.2	4.6
September	16,193.1	15,463.5	729.6	7,405.9	68.6	65.5	4.5
October	16,259.6	15,554.6	705.0	7,364.5	68.8	65.8	4.3
November	16,304.7	15,610.3	694.4	7,344.4	68.9	66.0	4.3
December	16,336.2	15,648.6	687.6	7,337.8	69.0	66.1	4.2

Table C: Principal statistics of the labour force, Malaysia, January 2010 - November 2025

Time Series	('000)				(%)		
	Labour Force	Employed	Unemployed	Outside Labour Force	Labour Force Participation Rate	Employment to Population Ratio	Unemployment Rate
2022							
January	16,366.4	15,686.1	680.4	7,332.1	69.1	66.2	4.2
February	16,402.7	15,730.9	671.8	7,320.7	69.1	66.3	4.1
March	16,438.5	15,769.4	669.2	7,309.7	69.2	66.4	4.1
April	16,502.8	15,853.5	649.3	7,270.2	69.4	66.7	3.9
May	16,537.8	15,900.0	637.7	7,260.1	69.5	66.8	3.9
June	16,566.9	15,936.3	630.6	7,255.5	69.5	66.9	3.8
July	16,599.2	15,978.4	620.7	7,247.9	69.6	67.0	3.7
August	16,629.7	16,017.7	612.0	7,242.0	69.7	67.1	3.7
September	16,657.2	16,052.2	605.0	7,239.2	69.7	67.2	3.6
October	16,683.5	16,081.5	602.0	7,237.3	69.7	67.2	3.6
November	16,709.4	16,108.6	600.9	7,235.7	69.8	67.3	3.6
December	16,730.0	16,130.4	599.6	7,239.5	69.8	67.3	3.6
2023							
January	16,755.4	16,159.3	596.1	7,238.3	69.8	67.3	3.6
February	16,781.2	16,189.3	591.9	7,236.7	69.9	67.4	3.5
March	16,811.7	16,223.0	588.7	7,230.6	69.9	67.5	3.5
April	16,838.4	16,251.4	586.9	7,228.2	70.0	67.5	3.5
May	16,864.1	16,279.5	584.6	7,226.8	70.0	67.6	3.5
June	16,889.4	16,307.8	581.7	7,225.7	70.0	67.6	3.4
July	16,914.2	16,335.0	579.2	7,225.0	70.1	67.7	3.4
August	16,932.1	16,354.9	577.3	7,231.3	70.1	67.7	3.4
September	16,948.8	16,375.1	573.7	7,238.9	70.1	67.7	3.4
October	16,974.1	16,403.2	570.9	7,237.6	70.1	67.7	3.4
November	17,000.4	16,431.1	569.2	7,235.4	70.1	67.8	3.3
December	17,025.5	16,457.7	567.8	7,234.3	70.2	67.8	3.3
2024^a							
January	16,789.3	16,229.4	559.9	7,026.8	70.5	68.1	3.3
February	16,822.6	16,265.7	556.9	7,039.0	70.5	68.2	3.3
March	16,853.1	16,296.6	556.6	7,054.0	70.5	68.2	3.3
April	16,920.9	16,364.4	556.5	7,032.0	70.6	68.3	3.3
May	16,947.6	16,393.5	554.1	7,051.0	70.6	68.3	3.3
June	16,972.2	16,418.5	553.7	7,072.3	70.6	68.3	3.3
July	16,997.3	16,444.2	553.2	7,092.8	70.6	68.3	3.3
August	17,034.2	16,482.8	551.4	7,102.4	70.6	68.3	3.2
September	17,065.1	16,516.3	548.8	7,118.3	70.6	68.3	3.2
October	17,095.5	16,549.8	545.7	7,134.7	70.6	68.3	3.2
November	17,127.5	16,585.7	541.8	7,150.3	70.5	68.3	3.2
December	17,168.4	16,629.9	538.5	7,156.8	70.6	68.4	3.1
2025							
January	17,218.2	16,684.4	533.8	7,154.8	70.6	68.5	3.1
February	17,266.9	16,734.1	532.8	7,153.1	70.7	68.5	3.1
March	17,308.1	16,778.5	529.6	7,158.1	70.7	68.6	3.1
April	17,344.5	16,818.6	525.9	7,169.4	70.8	68.6	3.0
May	17,384.8	16,862.4	522.4	7,176.8	70.8	68.7	3.0
June	17,434.0	16,915.3	518.7	7,176.5	70.8	68.7	3.0
July	17,470.5	16,948.9	521.6	7,189.3	70.8	68.7	3.0
August	17,508.0	16,988.0	520.0	7,201.5	70.9	68.8	3.0
September	17,544.8	17,026.3	518.6	7,209.3	70.9	68.8	3.0
October	17,579.0	17,060.1	518.9	7,218.2	70.9	68.8	3.0
November	17,610.9	17,092.5	518.4	7,218.9	70.9	68.8	2.9

Notes:

1. The monthly Labour Force Survey statistics until year 2023 are estimated based on population data of the Population and Housing Census of Malaysia 2010

2. ^a The monthly Labour Force Survey statistics for January 2024 onwards are estimated based on the Population and Housing Census of Malaysia 2020

Table C1: Seasonally adjusted principal statistics of the labour force, Malaysia, January 2010 - November 2025

Time Series	('000)			(%)	
	Labour Force	Employed	Unemployed	Labour Force Participation Rate	Unemployment Rate
2010					
January	12,368.0	11,959.8	408.2	64.0	3.3
February	12,120.1	11,712.8	402.2	62.9	3.3
March	12,242.4	11,817.2	416.7	63.4	3.4
April	12,382.1	12,025.3	377.6	63.8	3.0
May	12,197.5	11,790.7	405.7	63.0	3.3
June	12,338.5	11,898.3	423.8	63.6	3.4
July	12,419.9	11,996.4	422.5	64.0	3.4
August	12,353.8	11,945.3	400.9	63.4	3.2
September	12,330.7	11,957.7	386.3	63.3	3.1
October	12,772.3	12,407.0	370.8	65.4	2.9
November	12,392.6	11,966.9	418.2	63.3	3.4
December	12,794.9	12,391.6	406.9	65.4	3.2
2011					
January	12,782.4	12,383.1	399.6	64.8	3.1
February	12,674.9	12,312.5	357.2	64.3	2.8
March	12,778.0	12,409.9	363.4	64.6	2.8
April	12,792.6	12,426.6	388.4	64.5	3.0
May	12,757.1	12,352.4	403.0	64.3	3.2
June	12,805.0	12,403.0	390.8	64.5	3.1
July	12,858.3	12,466.3	389.1	64.7	3.0
August	12,930.6	12,501.4	415.0	64.9	3.2
September	12,906.1	12,496.0	424.3	64.8	3.3
October	13,013.1	12,616.9	409.0	65.1	3.1
November	12,829.7	12,410.9	412.6	64.3	3.2
December	13,053.8	12,651.3	405.4	64.9	3.1
2012					
January	13,164.0	12,781.1	383.3	65.5	2.9
February	13,103.1	12,699.1	394.1	65.3	3.0
March	13,221.1	12,822.6	397.2	65.5	3.0
April	13,226.3	12,841.5	403.0	65.6	3.0
May	13,293.7	12,903.8	389.0	65.9	2.9
June	13,256.6	12,841.1	407.8	65.5	3.1
July	13,413.8	12,988.9	422.4	66.1	3.1
August	13,348.9	12,972.1	359.1	65.6	2.7
September	13,416.1	13,002.8	425.0	65.8	3.2
October	13,400.9	12,964.4	448.1	65.7	3.3
November	13,520.3	13,119.3	398.4	65.9	2.9
December	13,499.3	13,079.5	423.0	65.5	3.1
2013					
January	13,550.1	13,113.1	432.8	65.6	3.2
February	13,641.8	13,242.5	389.3	65.9	2.9
March	13,625.3	13,188.7	439.5	65.5	3.2
April	13,763.5	13,353.9	422.7	66.3	3.1
May	13,867.0	13,414.9	451.7	66.7	3.3
June	14,232.8	13,838.3	392.6	68.2	2.8
July	14,119.5	13,683.2	434.0	67.7	3.1
August	14,200.8	13,730.9	451.5	68.0	3.2
September	14,295.2	13,852.9	450.0	68.5	3.1
October	14,214.8	13,743.2	481.1	67.9	3.4
November	14,279.3	13,773.3	510.8	68.2	3.6
December	14,248.6	13,816.1	437.2	67.8	3.1

Table C1: Seasonally adjusted principal statistics of the labour force, Malaysia, January 2010 - November 2025

Time Series	('000)				(%)
	Labour Force	Employed	Unemployed	Labour Force Participation Rate	Unemployment Rate
2014					
January	14,243.3	13,795.5	444.1	67.8	3.1
February	14,275.9	13,820.1	445.8	67.9	3.1
March	14,160.8	13,738.1	427.2	67.0	3.0
April	14,173.1	13,757.5	422.4	67.4	3.0
May	14,470.8	14,060.1	411.3	68.6	2.8
June	14,376.6	13,970.9	404.0	67.8	2.8
July	14,289.4	13,888.2	399.6	67.5	2.8
August	14,268.0	13,861.9	391.0	67.3	2.7
September	14,415.2	14,036.1	381.9	68.0	2.6
October	14,436.8	14,054.6	385.1	67.7	2.7
November	14,436.2	14,046.6	393.9	67.8	2.7
December	14,500.1	14,055.7	449.4	68.0	3.1
2015					
January	14,458.4	14,023.9	431.1	67.6	3.0
February	14,561.5	14,109.1	444.8	68.1	3.1
March	14,574.3	14,143.1	436.8	68.0	3.0
April	14,558.8	14,125.3	440.1	67.9	3.0
May	14,605.0	14,151.8	453.1	68.0	3.1
June	14,600.5	14,133.6	464.2	67.9	3.2
July	14,563.4	14,088.5	473.4	67.7	3.3
August	14,678.0	14,190.0	476.5	68.1	3.2
September	14,619.1	14,128.4	492.4	67.8	3.4
October	14,688.0	14,202.2	487.6	68.1	3.3
November	14,701.0	14,219.9	488.0	68.0	3.3
December	14,685.2	14,189.8	501.7	67.8	3.4
2016					
January	14,677.1	14,188.7	482.7	67.7	3.3
February	14,697.5	14,202.8	488.1	67.6	3.3
March	14,688.0	14,187.5	505.4	67.8	3.4
April	14,677.5	14,166.4	517.0	67.7	3.5
May	14,727.8	14,217.7	509.8	67.8	3.5
June	14,703.3	14,195.4	505.6	67.6	3.4
July	14,735.0	14,217.1	516.1	67.8	3.5
August	14,806.5	14,279.5	520.4	67.7	3.5
September	14,749.0	14,234.6	515.4	67.5	3.5
October	14,775.6	14,257.2	519.0	67.7	3.5
November	14,836.2	14,316.0	525.5	67.7	3.5
December	14,786.4	14,283.4	509.6	67.6	3.4
2017					
January	14,908.5	14,405.2	497.2	67.7	3.3
February	14,906.1	14,405.5	496.2	67.8	3.3
March	14,908.1	14,405.5	507.3	67.6	3.4
April	14,949.3	14,438.2	515.6	67.8	3.4
May	14,979.3	14,465.3	513.5	67.9	3.4
June	15,011.4	14,496.7	512.6	67.7	3.4
July	15,032.2	14,512.9	517.7	67.8	3.4
August	15,009.4	14,482.6	521.8	67.7	3.5
September	15,054.6	14,538.1	516.9	67.9	3.4
October	15,095.9	14,580.1	517.2	68.0	3.4
November	15,087.6	14,571.1	518.9	68.0	3.4
December	15,145.0	14,649.4	502.7	68.1	3.3

Table C1: Seasonally adjusted principal statistics of the labour force, Malaysia, January 2010 - November 2025

Time Series	('000)			(%)	
	Labour Force	Employed	Unemployed	Labour Force Participation Rate	Unemployment Rate
2018					
January	15,216.2	14,709.5	500.7	68.2	3.3
February	15,216.8	14,724.2	490.2	68.2	3.2
March	15,215.2	14,714.5	505.4	68.1	3.3
April	15,324.0	14,815.0	512.8	68.4	3.3
May	15,372.4	14,860.2	511.3	68.5	3.3
June	15,362.9	14,839.6	521.4	68.5	3.4
July	15,422.1	14,904.0	516.7	68.7	3.4
August	15,397.5	14,863.4	529.7	68.3	3.4
September	15,443.4	14,924.7	518.6	68.5	3.4
October	15,452.9	14,932.8	522.0	68.5	3.4
November	15,458.7	14,930.0	529.8	68.4	3.4
December	15,499.9	14,996.8	510.7	68.4	3.3
2019					
January	15,503.1	15,013.4	502.1	68.5	3.2
February	15,525.9	15,016.0	506.5	68.5	3.3
March	15,556.1	15,025.9	520.0	68.5	3.3
April	15,607.4	15,092.9	527.6	68.5	3.4
May	15,632.6	15,111.9	526.2	68.5	3.4
June	15,637.3	15,116.0	524.7	68.6	3.4
July	15,705.0	15,188.9	522.6	68.5	3.3
August	15,708.8	15,159.7	519.6	68.7	3.3
September	15,754.5	15,238.9	521.9	68.8	3.3
October	15,786.7	15,275.4	517.2	68.8	3.3
November	15,855.3	15,323.0	522.6	69.0	3.3
December	15,817.1	15,303.4	516.6	68.9	3.3
2020					
January	15,825.8	15,299.4	516.9	68.8	3.3
February	15,849.8	15,334.8	528.8	68.7	3.3
March	15,864.3	15,255.1	607.2	68.8	3.8
April	15,713.9	14,943.7	765.7	68.2	4.9
May	15,715.9	14,895.9	815.0	68.1	5.2
June	15,788.6	15,008.4	754.8	68.2	4.8
July	15,818.8	15,086.4	729.7	68.1	4.6
August	15,889.1	15,167.8	733.5	68.3	4.6
September	15,920.9	15,179.7	740.5	68.4	4.7
October	15,951.2	15,189.0	764.1	68.4	4.8
November	15,952.4	15,183.8	784.1	68.4	4.9
December	15,988.9	15,194.2	795.6	68.4	5.0
2021					
January	16,016.3	15,219.2	790.4	68.4	4.9
February	16,028.0	15,261.0	782.9	68.5	4.9
March	16,104.2	15,352.2	749.1	68.7	4.7
April	16,096.5	15,362.6	730.2	68.6	4.5
May	16,100.8	15,379.1	718.3	68.6	4.5
June	16,091.8	15,316.0	750.4	68.4	4.7
July	16,073.2	15,307.9	762.1	68.3	4.7
August	16,119.3	15,391.1	740.6	68.3	4.6
September	16,182.7	15,449.3	732.6	68.6	4.5
October	16,255.3	15,536.1	720.0	68.8	4.4
November	16,296.4	15,597.7	712.3	68.9	4.4
December	16,336.9	15,626.9	707.8	68.9	4.3

Table C1: Seasonally adjusted principal statistics of the labour force, Malaysia, January 2010 - November 2025

Time Series	('000)				(%)
	Labour Force	Employed	Unemployed	Labour Force Participation Rate	Unemployment Rate
2022					
January	16,350.3	15,651.6	688.3	68.9	4.2
February	16,392.6	15,720.2	675.4	69.1	4.1
March	16,437.2	15,768.1	667.8	69.2	4.1
April	16,507.1	15,866.5	640.6	69.5	3.9
May	16,553.2	15,921.7	631.6	69.6	3.8
June	16,620.9	16,034.8	603.9	69.8	3.6
July	16,611.0	15,996.5	601.8	69.7	3.6
August	16,647.2	16,058.0	604.7	69.7	3.6
September	16,640.1	16,030.1	607.5	69.7	3.7
October	16,656.8	16,033.7	618.8	69.6	3.7
November	16,686.4	16,063.3	620.1	69.7	3.7
December	16,719.8	16,097.7	622.2	69.7	3.7
2023					
January	16,739.7	16,129.0	603.3	69.7	3.6
February	16,770.6	16,176.4	594.3	69.8	3.5
March	16,804.5	16,221.9	586.8	69.9	3.5
April	16,829.1	16,250.4	582.9	69.9	3.5
May	16,871.2	16,293.3	578.5	70.0	3.4
June	16,933.1	16,381.7	560.3	70.2	3.3
July	16,942.3	16,368.7	565.8	70.2	3.3
August	16,960.9	16,394.1	573.9	70.2	3.4
September	16,948.3	16,364.6	578.0	70.1	3.4
October	16,954.3	16,369.2	583.4	70.0	3.4
November	16,977.1	16,392.1	581.9	70.1	3.4
December	17,001.7	16,424.9	580.1	70.1	3.4
2024^a					
January	16,785.8	16,216.3	561.1	70.5	3.3
February	16,820.1	16,262.3	556.2	70.5	3.3
March	16,848.6	16,293.2	555.7	70.5	3.3
April	16,909.6	16,356.7	556.6	70.6	3.3
May	16,945.7	16,393.5	552.6	70.6	3.3
June	16,988.7	16,464.4	542.6	70.7	3.2
July	17,012.8	16,466.4	547.7	70.6	3.2
August	17,051.3	16,508.6	549.4	70.7	3.2
September	17,073.3	16,513.3	552.1	70.6	3.2
October	17,089.5	16,527.5	552.7	70.5	3.2
November	17,113.6	16,563.7	547.1	70.5	3.2
December	17,155.9	16,612.5	541.7	70.5	3.2
2025					
January	17,228.5	16,690.2	534.0	70.6	3.1
February	17,285.9	16,765.8	532.5	70.7	3.1
March	17,342.6	16,804.2	528.2	70.8	3.0
April	17,351.6	16,821.3	526.3	70.7	3.0
May	17,387.9	16,865.6	523.1	70.7	3.0
June	17,434.5	16,932.4	516.1	70.8	3.0
July	17,470.7	16,956.5	520.0	70.9	3.0
August	17,498.6	16,990.2	518.6	70.9	3.0
September	17,530.6	17,014.2	519.3	70.9	3.0
October	17,555.3	17,032.3	521.1	70.9	3.0
November	17,595.9	17,055.7	520.2	71.0	3.0

Notes:

1. The monthly Labour Force Survey statistics until year 2023 are estimated based on population data of the Population and Housing Census of Malaysia 2010
2. ^a The monthly Labour Force Survey statistics for January 2024 onwards are estimated based on the Population and Housing Census of Malaysia 2020

Table C2: Number of unemployed persons by category and duration of unemployment, January 2016 - November 2025

('000)

Time Series	Unemployed	Actively Unemployed	Less than 3 month	3- Less than 6 month	6- Less than 12 month	More than year	Inactively unemployed
2016							
January	501.5	361.9	180.3	110.0	36.0	35.6	139.7
February	506.4	254.0	115.8	83.7	34.9	19.6	252.4
March	509.5	332.8	176.8	92.9	44.8	18.3	176.7
April	511.5	328.0	170.6	93.3	43.9	20.2	183.4
May	504.8	297.3	153.6	92.5	37.6	13.6	207.6
June	501.8	298.2	146.8	83.6	51.7	16.2	203.5
July	516.2	306.0	131.1	90.9	54.6	29.4	210.2
August	515.2	305.6	149.0	81.4	44.7	30.5	209.6
September	512.6	292.6	148.1	77.9	45.6	21.0	220.0
October	511.7	299.7	143.1	74.7	48.4	33.5	212.0
November	510.7	286.5	125.6	86.8	47.5	26.6	224.2
December	512.2	374.4	192.2	93.2	59.4	29.6	137.9
2017							
January	514.1	328.4	147.1	108.1	47.3	25.9	185.7
February	514.8	338.1	151.8	118.6	46.7	21.0	176.7
March	510.8	315.2	168.2	80.8	43.0	23.2	195.6
April	511.9	359.5	151.9	107.5	66.2	33.9	152.4
May	507.5	372.1	171.9	128.8	38.9	32.5	135.3
June	507.7	319.1	151.1	89.8	49.2	29.0	188.5
July	519.0	345.6	144.6	115.0	47.6	38.4	173.3
August	516.9	351.5	160.7	115.7	45.0	30.1	165.4
September	514.5	322.0	142.4	105.8	45.1	28.7	192.5
October	508.8	356.1	182.1	110.6	35.7	27.7	152.8
November	505.1	338.1	143.3	105.5	51.1	38.2	167.0
December	505.8	327.5	127.6	109.1	46.6	44.2	178.3
2018							
January	516.5	356.6	133.2	125.9	58.2	39.3	160.0
February	508.5	349.8	155.3	106.6	41.4	46.4	158.7
March	508.7	349.8	161.7	108.5	42.0	37.7	158.9
April	510.0	373.6	167.7	140.9	44.7	20.2	136.4
May	504.8	319.4	134.2	112.0	38.5	34.7	185.4
June	515.8	324.5	136.2	108.5	52.4	27.4	191.2
July	518.6	360.7	189.7	86.1	47.9	37.0	157.9
August	525.0	308.7	149.1	84.4	46.1	29.0	216.3
September	516.4	361.6	174.1	103.0	37.5	47.1	154.8
October	512.9	331.1	165.2	85.5	49.2	31.3	181.8
November	516.2	347.8	168.9	87.2	52.6	39.2	168.3
December	514.2	329.7	149.3	92.6	34.3	53.5	184.4
2019							
January	515.6	400.8	184.7	107.3	73.3	35.4	114.9
February	516.4	362.6	147.1	99.5	72.7	43.3	153.7
March	521.3	345.4	175.6	74.7	37.8	57.3	175.9
April	523.3	365.5	150.1	116.9	67.6	31.0	157.8
May	519.8	343.2	110.9	132.4	65.7	34.1	176.6
June	521.4	425.3	220.8	124.1	53.0	27.4	96.0
July	524.8	362.5	162.7	105.8	53.9	40.1	162.3
August	520.2	411.7	180.2	128.9	50.0	52.6	108.5
September	521.4	410.1	213.0	125.7	52.1	19.3	111.2
October	512.1	340.3	168.2	104.8	42.4	24.9	171.9
November	513.9	339.5	141.1	92.7	46.2	59.5	174.4
December	517.0	389.5	182.0	119.3	53.9	34.3	127.5

Table C2: Number of unemployed persons by category and duration of unemployment, January 2016 - November 2025

('000)

Time Series	Unemployed	Actively Unemployed	Less than 3 month	3- Less than 6 month	6- Less than 12 month	More than year	Inactively unemployed
2020							
January	511.7	319.8	132.4	103.2	48.7	35.6	191.9
February	525.2	343.2	148.5	96.6	52.6	45.4	182.1
March	610.5	422.9	200.0	100.2	72.7	50.1	187.6
April	778.8	459.8	235.9	156.6	38.1	29.2	319.0
May	826.1	573.7	308.1	136.1	78.6	50.8	252.4
June	773.2	594.0	298.7	159.3	85.8	50.3	179.2
July	745.1	620.2	307.4	168.5	87.2	57.1	124.9
August	741.6	615.1	302.4	164.9	89.7	58.0	126.5
September	737.5	610.4	300.5	163.6	88.2	58.0	127.1
October	748.2	623.1	304.5	167.4	89.0	62.2	125.1
November	764.4	637.7	311.2	169.8	90.4	66.3	126.7
December	772.9	644.7	313.9	172.0	92.0	66.8	128.2
2021							
January	782.5	657.2	321.5	175.9	90.4	69.3	125.3
February	777.5	647.4	327.8	155.5	91.0	73.1	130.1
March	753.2	626.9	320.1	152.5	85.6	68.6	126.3
April	742.7	618.7	322.6	151.0	80.7	64.4	124.0
May	728.1	609.9	318.2	148.3	81.2	62.2	118.2
June	768.7	642.9	335.9	157.4	86.7	62.9	125.8
July	778.2	651.3	351.4	156.7	86.1	57.1	126.9
August	748.8	627.5	337.3	153.6	80.1	56.5	121.3
September	729.6	611.0	333.3	147.3	78.9	51.4	118.7
October	705.0	589.5	327.3	142.3	74.0	45.9	115.4
November	694.4	581.8	324.3	137.6	74.8	45.1	112.6
December	687.6	576.5	322.3	136.5	74.1	43.5	111.1
2022							
January	680.4	569.5	320.8	134.2	72.0	42.5	110.9
February	671.8	562.5	318.7	131.8	71.0	41.0	109.3
March	669.2	561.0	320.4	130.1	70.4	40.1	108.1
April	649.3	542.9	315.3	124.3	64.9	38.4	106.4
May	637.7	534.0	312.9	122.5	61.9	36.6	103.8
June	630.6	528.5	311.6	120.6	61.3	35.0	102.1
July	620.7	517.4	307.7	115.7	60.0	34.0	103.3
August	612.0	507.3	304.2	110.7	59.7	32.7	104.7
September	605.0	496.6	298.7	108.2	58.2	31.5	108.4
October	602.0	491.3	297.1	106.4	57.0	30.8	110.7
November	600.9	488.0	295.9	105.2	56.7	30.2	112.9
December	599.6	484.2	294.7	103.9	55.7	29.9	115.4
2023							
January	596.1	481.6	292.9	103.7	54.1	31.0	114.5
February	591.9	475.5	290.3	102.4	52.9	30.0	116.4
March	588.7	472.9	289.7	101.9	51.1	30.1	115.8
April	586.9	471.9	288.7	101.8	50.5	30.8	115.1
May	584.6	470.4	286.6	100.2	52.2	31.4	114.2
June	581.7	466.9	285.2	99.6	51.3	30.8	114.8
July	579.2	464.7	284.7	99.1	51.8	29.1	114.5
August	577.3	462.1	283.9	98.5	51.1	28.9	115.2
September	573.7	458.9	282.6	98.1	50.2	28.0	114.8
October	570.9	457.2	281.5	97.3	49.8	28.6	113.8
November	569.2	454.5	280.8	96.4	48.9	28.4	114.7
December	567.8	453.6	280.2	96.0	48.6	28.8	114.2

Table C2: Number of unemployed persons by category and duration of unemployment, January 2016 - November 2025

('000)

Time Series	Unemployed	Actively Unemployed	Less than 3 month	3- Less than 6 month	6- Less than 12 month	More than year	Inactively unemployed
2024^a							
January	559.9	445.0	276.5	91.1	49.2	28.2	114.9
February	556.9	442.9	276.2	90.7	48.7	27.2	114.1
March	556.6	442.6	275.9	91.0	48.6	27.1	114.0
April	556.5	442.7	275.8	90.6	48.3	28.0	113.8
May	554.1	440.5	275.7	90.0	47.8	27.0	113.6
June	553.7	440.2	275.5	89.8	47.7	27.2	113.5
July	553.2	439.9	274.8	89.6	48.3	27.1	113.3
August	551.4	437.9	273.5	89.3	48.0	27.2	113.5
September	548.8	434.6	272.2	88.8	46.9	26.7	114.2
October	545.7	432.3	271.5	87.8	46.0	26.9	113.4
November	541.8	428.0	270.1	86.8	45.5	25.6	113.9
December	538.5	425.7	269.9	86.2	45.2	24.5	112.8
2025							
January	533.8	423.6	269.5	85.7	44.5	23.8	110.2
February	532.8	422.7	269.2	85.7	44.3	23.5	110.1
March	529.6	420.7	268.8	85.4	43.4	23.1	108.9
April	525.9	418.6	268.6	84.9	42.9	22.2	107.2
May	522.4	416.4	268.0	84.4	42.6	21.4	106.0
June	518.7	414.4	267.3	84.2	42.2	20.8	104.3
July	521.6	416.2	267.7	84.9	42.4	21.1	105.5
August	520.0	414.9	267.5	84.7	41.9	20.8	105.1
September	518.6	413.6	267.1	84.4	41.7	20.4	104.9
October	518.9	413.8	266.9	84.7	41.6	20.6	105.1
November	518.4	413.5	266.5	84.6	41.7	20.7	104.9

Notes:

1. The monthly Labour Force Survey statistics until year 2023 are estimated based on population data of the Population and Housing Census of Malaysia 2010
2. ^a The monthly Labour Force Survey statistics for January 2024 onwards are estimated based on the Population and Housing Census of Malaysia 2020

Table C3: Youth unemployment and unemployment rate by selected age group, January 2016 - November 2025

	('000)	(%)	('000)	(%)
Time Series	Unemployed youth (15 - 24 years)	Youth unemployment rate (15 - 24 years)	Unemployed youth (15 - 30 years)	Youth unemployment rate (15 - 30 years)
2016				
January	283.6	10.7	402.8	6.9
February	236.1	9.0	340.6	5.7
March	285.0	10.9	416.1	7.0
April	305.6	11.5	405.7	6.9
May	291.6	11.1	395.2	6.8
June	240.5	9.6	387.3	6.6
July	309.0	11.8	446.9	7.5
August	305.3	11.6	412.9	6.8
September	266.3	10.6	369.9	6.4
October	290.5	11.4	399.7	6.8
November	253.7	9.5	391.2	6.6
December	267.4	10.2	393.6	6.6
2017				
January	306.2	12.0	410.6	7.0
February	285.4	11.1	413.7	7.0
March	258.9	10.1	392.2	6.6
April	272.2	10.8	414.5	6.9
May	320.2	12.2	418.8	7.0
June	296.5	11.4	420.1	7.0
July	281.1	11.3	445.1	7.6
August	295.9	11.6	423.1	7.1
September	267.4	10.3	377.5	6.4
October	303.6	11.7	418.8	7.0
November	314.4	11.7	406.7	6.7
December	309.0	11.7	404.7	6.8
2018				
January	328.5	12.3	437.6	7.2
February	310.9	11.6	423.0	6.9
March	306.2	11.7	414.4	6.9
April	287.9	10.6	420.3	6.8
May	292.5	10.6	391.9	6.4
June	284.3	10.4	426.9	6.9
July	320.6	11.8	425.4	6.9
August	303.2	11.5	407.0	6.7
September	289.5	10.5	413.3	6.8
October	277.2	10.1	429.1	7.0
November	289.0	10.5	415.1	6.7
December	328.7	11.7	428.8	6.8
2019				
January	290.1	10.6	409.3	6.7
February	282.1	10.5	424.3	6.8
March	266.3	9.9	403.0	6.6
April	288.1	10.3	430.0	6.9
May	289.3	10.5	414.4	6.7
June	287.0	10.5	418.5	6.8
July	291.3	10.2	434.4	7.0
August	297.8	11.2	441.2	7.3
September	307.1	11.1	443.4	7.2
October	244.5	9.0	404.8	6.4
November	274.2	9.5	411.8	6.5
December	309.9	11.2	412.9	6.5

Table C3: Youth unemployment and unemployment rate by selected age group, January 2016 - November 2025

	('000)	(%)	('000)	(%)
Time Series	Unemployed youth (15 - 24 years)	Youth unemployment rate (15 - 24 years)	Unemployed youth (15 - 30 years)	Youth unemployment rate (15 - 30 years)
2020				
January	268.1	10.0	396.9	6.4
February	288.0	10.8	395.0	6.4
March	291.4	11.3	470.5	7.8
April	324.2	12.9	528.0	9.0
May	362.4	14.2	573.7	10.0
June	335.8	13.1	581.7	9.7
July	313.2	13.9	544.5	9.7
August	331.0	13.7	502.3	8.9
September	325.5	13.0	502.6	8.5
October	321.6	13.4	513.2	8.9
November	344.5	13.0	528.4	8.8
December	312.2	13.2	497.2	8.7
2021				
January	295.3	13.5	509.2	9.2
February	347.6	13.9	544.3	9.2
March	321.1	13.4	537.3	9.3
April	310.7	13.7	507.3	8.7
May	328.1	13.6	545.7	9.2
June	340.9	12.7	565.1	9.4
July	344.1	13.7	520.6	8.5
August	321.1	13.9	524.1	8.8
September	335.1	13.9	507.8	8.5
October	358.8	13.9	508.4	8.1
November	350.9	13.7	517.9	8.2
December	367.7	13.7	533.8	8.5
2022				
January	364.5	13.2	521.8	8.3
February	356.9	13.0	513.7	8.1
March	361.0	13.1	502.4	8.0
April	357.2	12.8	501.2	7.7
May	341.4	12.5	475.7	7.4
June	343.9	12.2	474.7	7.4
July	336.2	12.1	476.5	7.4
August	337.6	12.1	467.5	7.1
September	339.1	12.1	460.4	7.1
October	337.2	12.1	476.9	7.4
November	329.3	11.9	453.1	7.0
December	331.0	11.8	444.5	6.9
2023				
January	328.8	11.5	449.7	7.0
February	320.8	11.3	450.2	7.0
March	317.3	11.2	454.9	7.1
April	315.6	11.1	441.0	6.7
May	313.0	11.0	448.6	7.0
June	312.4	11.0	444.8	6.9
July	311.2	10.9	444.8	6.8
August	309.2	10.8	439.6	6.8
September	310.1	10.6	440.0	6.7
October	313.3	10.7	439.6	6.6
November	308.5	10.6	432.0	6.5
December	307.2	10.6	432.1	6.4

Table C3: Youth unemployment and unemployment rate by selected age group, January 2016 - November 2025

	('000)	(%)	('000)	(%)
Time Series	Unemployed youth (15 - 24 years)	Youth unemployment rate (15 - 24 years)	Unemployed youth (15 - 30 years)	Youth unemployment rate (15 - 30 years)
2024^a				
January	299.1	10.7	422.2	6.9
February	295.7	10.6	420.1	6.9
March	296.9	10.6	420.3	6.9
April	293.6	10.5	416.6	6.8
May	295.6	10.5	412.0	6.7
June	293.5	10.4	409.0	6.7
July	294.6	10.4	404.3	6.6
August	294.8	10.4	404.7	6.6
September	295.6	10.4	407.6	6.4
October	300.6	10.5	402.8	6.3
November	300.0	10.4	401.8	6.3
December	301.4	10.4	400.7	6.3
2025				
January	299.3	10.3	402.4	6.3
February	298.9	10.3	401.6	6.3
March	299.7	10.3	399.4	6.3
April	298.3	10.3	400.6	6.2
May	297.7	10.2	399.0	6.2
June	297.5	10.2	396.8	6.2
July	298.9	10.2	399.0	6.2
August	298.0	10.2	398.7	6.2
September	296.9	10.1	398.1	6.2
October	297.6	10.1	398.5	6.1
November	297.9	10.1	398.0	6.1

Notes:

1. The monthly Labour Force Survey statistics until year 2023 are estimated based on population data of the Population and Housing Census of Malaysia 2010
2. ^a The monthly Labour Force Survey statistics for January 2024 onwards are estimated based on the Population and Housing Census of Malaysia 2020

Table C4: Employed person by status in employment, January 2016 - November 2025

('000)

Time Series	Employer	Employees	Own account workers	Unpaid family worker
2016				
January	449.0	10,534.1	2,570.3	597.1
February	543.9	10,582.3	2,437.5	633.1
March	539.4	10,381.2	2,660.3	619.7
April	456.2	10,280.6	2,805.9	621.1
May	532.0	10,407.9	2,573.1	687.1
June	534.3	10,535.6	2,453.5	694.9
July	427.2	10,536.4	2,605.4	643.8
August	452.3	10,719.5	2,527.0	608.1
September	460.7	10,814.3	2,331.0	643.6
October	458.8	10,719.6	2,508.7	566.3
November	466.6	10,929.5	2,311.2	609.9
December	443.0	10,865.9	2,354.2	613.6
2017				
January	550.0	10,652.0	2,548.6	616.2
February	464.6	10,677.2	2,548.4	711.7
March	575.4	10,624.8	2,630.1	591.4
April	590.9	10,525.1	2,687.8	625.8
May	637.9	10,357.7	2,736.1	722.8
June	578.8	10,745.8	2,590.1	605.3
July	549.2	10,656.4	2,734.8	557.0
August	608.4	10,703.7	2,623.1	578.1
September	646.0	10,701.8	2,554.6	641.9
October	593.9	10,949.6	2,446.1	592.0
November	401.7	10,935.5	2,709.4	532.3
December	546.1	10,982.5	2,504.3	607.2
2018				
January	533.0	10,749.4	2,757.7	630.3
February	472.7	10,746.4	2,825.9	676.5
March	493.9	10,585.3	2,920.7	732.6
April	550.2	10,832.6	2,719.5	700.8
May	517.2	10,751.8	2,880.6	703.0
June	529.0	10,823.6	2,817.7	692.9
July	518.2	10,651.2	3,012.8	700.2
August	599.4	10,758.4	2,865.7	673.0
September	639.1	10,690.0	2,907.8	689.6
October	513.7	10,764.5	2,944.6	714.2
November	545.8	10,899.2	2,836.9	659.4
December	593.5	10,811.7	2,909.6	671.2
2019				
January	570.4	10,961.6	2,823.0	637.7
February	619.4	11,098.6	2,752.4	556.5
March	560.0	11,327.2	2,574.5	573.6
April	578.3	11,156.7	2,764.8	590.1
May	597.9	11,345.6	2,640.8	538.2
June	551.6	11,243.3	2,746.5	593.1
July	541.6	11,446.9	2,654.0	537.2
August	582.2	11,235.5	2,855.0	513.0
September	510.8	11,633.8	2,500.3	584.8
October	547.5	11,659.3	2,452.0	606.8
November	527.6	11,565.1	2,679.8	542.5
December	482.0	11,563.4	2,669.6	571.1

Table C4: Employed person by status in employment, January 2016 - November 2025

('000)

Time Series	Employer	Employees	Own account workers	Unpaid family worker
2020				
January	552.3	11,375.4	2,757.1	632.8
February	513.2	11,513.8	2,691.0	626.5
March	515.7	11,280.0	2,812.2	624.5
April	563.1	11,146.3	2,585.4	638.5
May	470.3	11,399.4	2,423.9	594.1
June	497.9	11,438.2	2,417.8	636.2
July	434.8	11,647.4	2,380.9	610.4
August	434.9	11,719.9	2,416.0	582.8
September	445.1	11,734.9	2,433.7	579.5
October	450.5	11,763.0	2,425.4	568.3
November	456.8	11,782.5	2,412.0	544.7
December	462.9	11,806.1	2,399.4	547.0
2021				
January	469.7	11,846.9	2,394.6	526.1
February	481.0	11,870.8	2,429.9	488.9
March	491.8	11,898.9	2,478.2	460.4
April	493.0	11,914.8	2,490.5	453.8
May	495.7	11,930.8	2,492.9	451.4
June	486.3	11,874.1	2,497.0	440.0
July	485.1	11,869.7	2,503.8	436.2
August	491.4	11,897.6	2,537.7	449.9
September	499.7	11,925.9	2,572.6	465.4
October	506.0	11,971.2	2,607.9	469.5
November	509.8	11,998.3	2,628.0	474.2
December	512.9	12,015.9	2,640.2	479.7
2022				
January	517.2	12,028.9	2,656.2	483.8
February	521.4	12,046.2	2,674.8	488.6
March	525.7	12,060.2	2,691.7	491.8
April	536.0	12,092.5	2,723.6	501.4
May	539.6	12,112.6	2,744.0	503.9
June	542.5	12,125.6	2,766.2	502.0
July	545.1	12,144.9	2,787.5	500.9
August	546.9	12,167.0	2,804.7	499.1
September	548.0	12,182.7	2,823.2	498.2
October	552.4	12,200.4	2,833.6	495.2
November	554.5	12,214.6	2,848.1	491.3
December	556.2	12,225.5	2,860.9	487.8
2023				
January	558.1	12,237.3	2,877.8	486.1
February	560.3	12,249.9	2,892.5	486.6
March	561.8	12,264.7	2,909.1	487.4
April	565.0	12,276.4	2,921.0	489.0
May	566.6	12,288.0	2,935.0	490.0
June	569.4	12,299.2	2,948.5	490.7
July	570.9	12,313.6	2,958.9	491.6
August	571.9	12,324.5	2,966.8	491.7
September	573.7	12,334.7	2,974.2	492.4
October	574.7	12,349.7	2,985.0	493.8
November	576.6	12,365.9	2,994.4	494.3
December	582.1	12,378.2	3,003.9	493.5

Table C4: Employed person by status in employment, January 2016 - November 2025

('000)

Time Series	Employer	Employees	Own account workers	Unpaid family worker
2024^a				
January	535.5	12,231.9	3,010.0	452.0
February	540.6	12,249.4	3,024.8	450.9
March	543.9	12,266.2	3,036.0	450.5
April	548.7	12,300.3	3,065.3	450.2
May	552.2	12,315.0	3,076.3	450.1
June	554.1	12,328.6	3,086.4	449.3
July	556.4	12,341.3	3,097.8	448.8
August	550.0	12,410.4	3,069.1	453.2
September	547.5	12,435.8	3,071.6	461.4
October	543.0	12,481.5	3,054.9	470.4
November	544.3	12,501.5	3,069.7	470.1
December	545.8	12,528.1	3,086.6	469.4
2025				
January	547.0	12,560.1	3,108.2	469.1
February	550.8	12,587.3	3,127.8	468.2
March	553.1	12,612.4	3,146.2	466.9
April	554.4	12,634.5	3,163.8	465.9
May	559.7	12,659.1	3,178.1	465.6
June	564.4	12,688.5	3,197.5	464.9
July	568.0	12,706.8	3,209.2	464.8
August	572.2	12,727.0	3,224.7	464.1
September	579.5	12,744.9	3,237.3	464.7
October	584.8	12,762.1	3,249.2	463.9
November	589.3	12,778.7	3,260.0	464.4

Notes:

1. The monthly Labour Force Survey statistics until year 2023 are estimated based on population data of the Population and Housing Census of Malaysia 2010
2. ^a The monthly Labour Force Survey statistics for January 2024 onwards are estimated based on the Population and Housing Census of Malaysia 2020

Table D: Employed person by occupation, Malaysia, 1982 - 2024

('000)

Year	Total	Occupation								
		1	2	3	4	5	6	7	8	9
		Dictionary of Occupational Classification, 1980 ¹								
1982	5,249.0	375.7	111.5	493.4	510.5	573.2	1,655.3	1,529.4	n.a	n.a
1983	5,457.0	381.3	132.3	520.6	522.7	593.7	1,678.5	1,628.0	n.a	n.a
1984	5,566.7	409.8	115.4	541.3	600.0	638.1	1,694.1	1,567.7	n.a	n.a
1985	5,653.4	426.6	129.2	551.5	625.9	643.0	1,720.0	1,556.9	n.a	n.a
1986	5,760.1	449.0	140.4	544.9	638.5	686.6	1,757.2	1,543.6	n.a	n.a
1987	5,983.9	452.0	117.7	566.1	711.9	704.3	1,845.8	1,586.1	n.a	n.a
1988	6,157.2	454.1	127.9	574.4	728.1	728.3	1,892.5	1,651.7	n.a	n.a
1989	6,390.9	477.0	131.3	605.5	726.0	727.0	1,848.9	1,875.0	n.a	n.a
1990	6,685.0	519.8	144.8	655.6	758.7	762.6	1,750.7	2,092.8	n.a	n.a
1992	7,047.8	586.4	187.8	732.3	763.5	790.1	1,549.7	2,437.9	n.a	n.a
1993	7,383.4	639.5	219.9	789.2	771.8	879.0	1,576.0	2,508.0	n.a	n.a
1995	7,645.0	756.6	247.7	832.0	834.9	845.8	1,539.5	2,588.4	n.a	n.a
1996	8,399.3	838.0	298.2	905.8	935.7	943.1	1,644.8	2,833.6	n.a	n.a
1997	8,569.2	896.6	329.5	963.2	918.5	985.1	1,516.4	2,960.0	n.a	n.a
1998	8,599.6	913.1	346.2	946.9	937.5	1,007.9	1,632.6	2,815.4	n.a	n.a
1999	8,837.8	937.0	348.3	985.6	991.7	1,052.8	1,633.1	2,889.2	n.a	n.a
2000	9,269.2	1,020.4	391.9	1,012.5	1,044.8	1,189.3	1,569.3	3,040.9	n.a	n.a
Malaysia Standard Classification of Occupations (MASCO) 1998 ²										
2001	9,357.0	695.0	457.2	1,126.1	890.6	1,291.1	1,265.3	1,160.2	1,476.6	994.9
2002	9,542.6	786.3	483.5	1,194.6	890.3	1,307.7	1,260.8	1,168.1	1,373.0	1,078.2
2003	9,869.7	793.5	530.3	1,219.9	937.8	1,399.4	1,249.8	1,235.6	1,420.7	1,082.6
2004	9,979.5	859.3	561.3	1,211.6	931.2	1,479.7	1,292.8	1,165.2	1,409.9	1,068.5
2005	10,045.4	777.4	555.1	1,266.8	992.3	1,483.7	1,268.6	1,145.5	1,427.5	1,128.3
2006	10,275.4	829.6	565.9	1,307.5	968.3	1,597.1	1,335.9	1,154.8	1,408.0	1,108.4
2007	10,538.1	770.4	596.8	1,400.5	1,029.5	1,705.6	1,355.3	1,133.2	1,347.4	1,199.3
2008	10,659.6	748.8	613.7	1,496.4	1,053.4	1,776.1	1,271.3	1,153.8	1,344.1	1,202.0
2009	10,897.3	822.9	684.6	1,560.0	1,086.6	1,869.1	1,255.7	1,132.9	1,242.7	1,242.8
2010	11,899.5	856.7	737.4	1,695.8	1,183.2	1,959.6	1,382.0	1,228.3	1,502.8	1,353.7
Malaysia Standard Classification of Occupations (MASCO) 2008 ³										
2011	12,351.5	692.4	1,221.0	1,306.3	1,180.3	2,503.2	1,011.8	1,345.8	1,570.2	1,520.4
2012	12,820.5	684.4	1,244.0	1,283.4	1,168.8	2,640.7	1,184.1	1,428.5	1,576.8	1,609.8
2013	13,545.4	695.5	1,284.7	1,292.6	1,190.7	2,911.0	1,180.2	1,492.1	1,694.4	1,804.0
2014	13,852.6	664.4	1,376.5	1,367.2	1,237.8	3,169.3	1,002.4	1,555.1	1,659.1	1,820.8
2015	14,067.7	718.6	1,462.0	1,406.9	1,241.1	3,188.9	940.3	1,578.8	1,585.2	1,945.9
Malaysia Standard Classification of Occupations (MASCO) 2013 ⁴										
2016	14,163.7	658.5	1,755.2	1,453.5	1,163.8	3,176.3	872.0	1,570.3	1,669.8	1,844.2
2017	14,476.8	690.3	1,771.6	1,522.9	1,236.5	3,212.6	898.9	1,517.1	1,766.5	1,860.4
2018	14,776.0	660.5	1,824.4	1,536.7	1,247.7	3,422.8	921.9	1,545.5	1,787.9	1,828.7
2019	15,073.4	694.5	1,883.5	1,573.9	1,272.1	3,411.6	932.8	1,577.1	1,865.4	1,862.5
2020	14,719.4	826.1	1,944.4	1,591.3	1,258.3	3,472.2	874.3	1,417.2	1,667.7	1,667.9
2021	14,825.2	704.4	2,048.6	1,867.8	1,517.1	3,438.4	673.1	1,258.6	1,537.1	1,780.3
Malaysia Standard Classification of Occupations (MASCO) 2020 ⁵										
2022	15,155.2	725.2	2,045.6	1,855.6	1,512.1	3,619.8	691.0	1,379.6	1,575.0	1,751.4
2023	15,813.4	762.5	2,141.5	1,906.8	1,562.9	3,744.0	703.1	1,402.3	1,634.1	1,956.2
2024	16,369.4	808.9	2,175.3	1,959.6	1,605.9	3,790.7	678.4	1,446.7	1,734.8	2,169.1

Notes:

1. The Labour Force Survey statistics for 2019 and preceding years are estimated based on the Population and Housing Census of Malaysia 2010

2. The Labour Force Survey statistics for 2020 and onwards are estimated based on the Population and Housing Census of Malaysia 2020

3. ¹For 1982- 2000, category of occupation are classified according to the "Dictionary of Occupational Classification, 1980" as follows:

1: Professional, technical and related workers

2: Administrative and managerial workers

3: Clerical and related workers

4: Sales workers

5: Service workers

6: Agricultural, animal husbandry and forestry workers, fishermen and hunters

7: Production and related workers, transport equipment operators and labourers

4. ²For 2001 - 2010, category of occupation are classified according to the "Malaysia Standard Classification of Occupations (MASCO) 1998" as follows:

1: Legislators, senior officials and managers

2: Professionals

3: Technicians and associate professionals

4: Clerical workers

5: Service workers and shop and market sales workers

6: Skilled agricultural and fishery workers

7: Craft and related trade workers

8: Plant and machine-operators and assemblers

9: Elementary occupations

5. ³For 2011 - 2015, category of occupation are classified according to the "Malaysia Standard Classification of Occupations (MASCO) 2008" as follows:

1: Managers

2: Professionals

3: Technicians and associate professionals

4: Clerical support workers

5: Service workers and shop and market sales workers

6: Skilled agricultural, forestry and fishery workers

7: Craft and related trades workers

8: Plant and machine-operators and assemblers

9: Elementary occupations

6. ⁴For 2016 - 2021, category of occupation are classified according to the "Malaysia Standard Classification of Occupations (MASCO) 2013" as follows:

1: Managers

2: Professionals

3: Technicians and associate professionals

4: Clerical support workers

5: Service and sales workers

6: Skilled agricultural, forestry, livestock and fishery workers

7: Craft and related trades workers

8: Plant and machine-operators and assemblers

9: Elementary occupations

7. ⁵For 2022 onwards, categories of occupation are classified according to the

"Malaysia Standard Classification of Occupations (MASCO) 2020"

Table E: Employed person by industry, Malaysia, 1982 - 2024

('000)

Year	Total	Industry									
		A	B	C	D	E	F	G	H	I	J
		Malaysia Industrial Classification, (Updated) 1972 ¹									
1982	5,249.0	1,635.8	51.7	816.0	34.9	377.5	860.9	223.1	202.1	1,046.9	n.a
1983	5,457.0	1,670.9	55.1	894.1	39.3	425.6	897.3	235.9	197.7	1,041.0	n.a
1984	5,566.7	1,695.0	46.5	858.4	32.9	428.0	956.6	242.8	200.5	1,106.0	n.a
1985	5,653.4	1,717.4	44.4	850.4	31.5	419.4	994.3	244.3	218.9	1,132.7	n.a
1986	5,760.1	1,764.5	40.6	874.0	32.4	369.4	1,035.1	242.0	234.6	1,167.6	n.a
1987	5,983.9	1,846.4	33.0	928.9	35.9	336.3	1,091.7	252.0	241.6	1,218.0	n.a
1988	6,157.2	1,883.8	30.7	978.1	41.3	339.9	1,112.6	265.1	229.4	1,276.1	n.a
1989	6,390.9	1,832.5	33.1	1,171.1	40.6	376.9	1,143.9	277.6	253.2	1,262.0	n.a
1990	6,685.0	1,737.6	36.8	1,332.8	46.7	423.9	1,217.8	301.9	258.4	1,329.0	n.a
1992	7,047.8	1,535.8	36.3	1,639.6	45.9	506.7	1,254.5	326.2	299.8	1,403.1	n.a
1993	7,383.4	1,558.6	37.6	1,726.9	60.3	538.8	1,266.2	344.0	330.1	1,520.9	n.a
1995	7,645.0	1,526.8	32.5	1,780.5	48.0	611.3	1,370.7	359.2	363.7	1,552.2	n.a
1996	8,399.3	1,626.2	35.0	1,912.1	44.1	716.5	1,566.7	400.7	412.0	1,686.0	n.a
1997	8,569.2	1,481.3	38.5	2,002.5	50.9	793.0	1,577.9	423.3	447.2	1,754.5	n.a
1998	8,599.6	1,616.5	28.4	1,907.8	50.0	745.9	1,616.0	421.7	425.8	1,787.5	n.a
1999	8,837.8	1,623.7	37.8	1,990.7	50.2	722.8	1,660.6	420.3	466.2	1,865.4	n.a
2000	9,269.2	1,552.4	27.7	2,174.2	49.3	759.9	1,787.2	433.9	474.3	2,010.3	n.a
Malaysia Standard Industrial Classification (MSIC) 2000 ²											
2001	9,357.0	1,288.2	127.7	26.7	2,184.1	57.3	829.8	1,458.1	585.1	468.3	225.3
2002	9,542.6	1,316.8	107.7	27.5	2,068.9	50.6	905.1	1,497.0	616.1	496.8	240.5
2003	9,869.7	1,301.2	107.0	29.5	2,131.0	57.6	942.5	1,592.2	644.2	481.6	223.4
2004	9,979.5	1,326.5	126.1	34.7	2,023.0	57.9	890.8	1,607.2	698.2	532.9	236.1
2005	10,045.4	1,355.2	115.2	36.1	1,989.3	56.6	904.4	1,620.3	671.8	544.7	247.4
2006	10,275.4	1,375.3	128.2	42.0	2,082.8	75.4	908.9	1,650.5	721.3	539.7	242.3
2007	10,538.1	1,437.3	120.9	39.4	1,977.3	60.8	922.5	1,712.1	760.7	538.2	282.2
2008	10,659.6	1,365.6	122.1	54.5	1,944.7	60.5	998.0	1,729.4	783.6	583.4	276.0
2009	10,897.3	1,349.6	121.5	62.7	1,807.1	58.1	1,015.9	1,831.8	800.5	592.0	271.5
Malaysia Standard Industrial Classification (MSIC) 2008 ³											
2010	11,899.5	1,614.9	57.2	2,108.5	55.5	66.7	1,082.7	1,887.8	554.7	856.7	178.9
2011	12,351.5 ⁴	1,421.7	73.5	2,244.0	51.0	71.9	1,151.5	2,005.4	604.0	951.1	206.5
2012	12,820.5 ⁴	1,628.2	80.8	2,263.7	61.9	81.0	1,174.7	2,125.6	624.3	965.1	208.8
2013	13,545.4 ⁴	1,758.9	87.9	2,315.8	61.5	83.7	1,292.1	2,261.4	626.5	1,041.5	194.1
2014	13,852.6 ⁴	1,694.2	84.7	2,372.5	65.6	81.2	1,277.7	2,324.4	598.2	1,149.3	213.2
2015	14,067.7 ⁴	1,753.9	104.4	2,322.7	61.7	72.1	1,309.9	2,361.4	615.0	1,150.8	214.2
2016	14,163.7 ⁴	1,609.9	96.3	2,390.6	77.9	76.4	1,251.7	2,428.5	630.4	1,260.7	208.7
2017	14,476.8 ⁴	1,635.0	97.2	2,513.3	62.2	81.0	1,258.9	2,485.4	658.2	1,323.2	220.3
2018	14,776.0 ⁴	1,570.3	90.8	2,499.9	68.8	88.6	1,257.8	2,544.6	697.9	1,473.4	216.4
2019	15,073.4 ⁴	1,541.1	91.0	2,612.0	75.4	88.8	1,246.7	2,604.6	677.8	1,549.7	223.9
2020	14,719.4	1,454.6	82.1	2,469.7	75.2	82.2	1,180.6	2,662.5	692.1	1,473.9	237.6
2021	14,825.2 ⁴	1,408.8	82.8	2,476.4	77.1	86.3	1,165.8	2,732.7	693.6	1,447.2	241.7
2022	15,155.2 ⁴	1,408.1	84.1	2,507.3	78.8	85.0	1,245.4	2,840.6	707.2	1,482.7	252.7
2023	15,813.4 ⁴	1,437.4	88.8	2,597.8	81.5	85.5	1,284.5	2,991.5	735.3	1,592.8	268.1
2024	16,369.4 ⁴	1,478.5	88.7	2,664.6	76.8	93.0	1,393.4	3,063.3	751.4	1,617.1	286.3

Notes:

1. The Labour Force Survey statistics for 2019 and preceding years are estimated based on the Population and Housing Census of Malaysia 2010

2. The Labour Force Survey statistics for 2020 and onwards are estimated based on the Population and Housing Census of Malaysia 2020

3. ¹For 1982 - 2000, industry was classified according to the "Malaysia Industrial Classification, (Updated) 1972" as follows:

A: Agriculture, forestry, livestock and fishing
 B: Mining and quarrying
 C: Manufacturing
 D: Electricity, gas and water
 E: Construction
 F: Wholesale and retail trade, restaurants and hotels
 G: Transport, storage and communications
 H: Finance, insurance, real estate and business services
 I: Community, social and personal services

4. ²For 2001 - 2009, industry was classified according to the "Malaysia Standard Industrial Classification (MSIC) 2000" as follows:

A: Agriculture, hunting and forestry
 B: Fishing
 C: Mining and quarrying
 D: Manufacturing
 E: Electricity, gas and water supply
 F: Construction
 G: Wholesale and retail trade; repair of motor vehicles, motorcycles and personal and household goods
 H: Hotels and restaurants
 I: Transport, storage and communications
 J: Financial intermediation
 K: Real estate, renting and business activities
 L: Public administration and defence; compulsory social security
 M: Education
 N: Health and social work
 O: Other community, social and personal service activities
 P: Private households with employed persons

5. ³For 2010 - 2022, industry was classified according to the "Malaysia Standard Industrial Classification (MSIC) 2008" as follows:

A: Agriculture, forestry and fishing
 B: Mining and quarrying
 C: Manufacturing
 D: Electricity, gas, steam and air conditioning supply
 E: Water supply; sewerage, waste management and remediation activities
 F: Construction
 G: Wholesale and retail trade, repair of motor vehicles and motorcycles
 H: Transportation and storage
 I: Accommodation and food service activities
 J: Information and communication
 K: Financial and insurance/takaful activities
 L: Real estate activities
 M: Professional, scientific and technical activities
 N: Administrative and support service activities
 O: Public administration and defence; compulsory social security
 P: Education
 Q: Human health and social work activities
 R: Arts, entertainment and recreation
 S: Other service activities
 T: Activities of households as employers

6. ⁴For year 2011-2019 & 2021-2024, total includes 'Activities of extraterritorial organizations and bodies'

Table E: Employed person by industry, Malaysia, 1982 - 2024 (cont'd)

('000)

Year	Total	Industry									
		K	L	M	N	O	P	Q	R	S	T
		Malaysia Industrial Classification, (Updated) 1972 ¹									
1982	5,249.0	n.a	n.a	n.a	n.a	n.a	n.a	n.a	n.a	n.a	n.a
1983	5,457.0	n.a	n.a	n.a	n.a	n.a	n.a	n.a	n.a	n.a	n.a
1984	5,566.7	n.a	n.a	n.a	n.a	n.a	n.a	n.a	n.a	n.a	n.a
1985	5,653.4	n.a	n.a	n.a	n.a	n.a	n.a	n.a	n.a	n.a	n.a
1986	5,760.1	n.a	n.a	n.a	n.a	n.a	n.a	n.a	n.a	n.a	n.a
1987	5,983.9	n.a	n.a	n.a	n.a	n.a	n.a	n.a	n.a	n.a	n.a
1988	6,157.2	n.a	n.a	n.a	n.a	n.a	n.a	n.a	n.a	n.a	n.a
1989	6,390.9	n.a	n.a	n.a	n.a	n.a	n.a	n.a	n.a	n.a	n.a
1990	6,685.0	n.a	n.a	n.a	n.a	n.a	n.a	n.a	n.a	n.a	n.a
1992	7,047.8	n.a	n.a	n.a	n.a	n.a	n.a	n.a	n.a	n.a	n.a
1993	7,383.4	n.a	n.a	n.a	n.a	n.a	n.a	n.a	n.a	n.a	n.a
1995	7,645.0	n.a	n.a	n.a	n.a	n.a	n.a	n.a	n.a	n.a	n.a
1996	8,399.3	n.a	n.a	n.a	n.a	n.a	n.a	n.a	n.a	n.a	n.a
1997	8,569.2	n.a	n.a	n.a	n.a	n.a	n.a	n.a	n.a	n.a	n.a
1998	8,599.6	n.a	n.a	n.a	n.a	n.a	n.a	n.a	n.a	n.a	n.a
1999	8,837.8	n.a	n.a	n.a	n.a	n.a	n.a	n.a	n.a	n.a	n.a
2000	9,269.2	n.a	n.a	n.a	n.a	n.a	n.a	n.a	n.a	n.a	n.a
Malaysia Standard Industrial Classification (MSIC) 2000 ²											
2001	9,357.0	348.6	664.6	508.6	173.3	190.4	219.9	n.a	n.a	n.a	n.a
2002	9,542.6	397.1	663.6	508.6	189.3	192.5	262.7	n.a	n.a	n.a	n.a
2003	9,869.7	404.2	666.5	594.3	217.3	216.1	258.0	n.a	n.a	n.a	n.a
2004	9,979.5	458.5	684.3	610.7	198.2	231.3	260.9	n.a	n.a	n.a	n.a
2005	10,045.4	459.0	728.5	607.1	212.6	234.9	260.6	n.a	n.a	n.a	n.a
2006	10,275.4	508.4	674.1	600.1	223.2	247.1	254.7	n.a	n.a	n.a	n.a
2007	10,538.1	558.1	716.1	632.7	238.9	266.5	272.7	n.a	n.a	n.a	n.a
2008	10,659.6	553.2	751.1	656.5	252.6	274.2	253.0	n.a	n.a	n.a	n.a
2009	10,897.3	601.9	813.9	731.4	271.7	303.3	262.5	n.a	n.a	n.a	n.a
Malaysia Standard Industrial Classification (MSIC) 2008 ³											
2010	11,899.5	323.4	58.5	285.6	359.2	787.7	779.3	280.0	91.6	182.9	285.4
2011	12,351.5 ⁴	319.3	61.2	328.4	448.0	750.2	782.3	384.1	87.5	181.8	225.8
2012	12,820.5 ⁴	322.1	68.9	307.3	532.2	696.4	784.9	414.3	84.8	190.5	202.7
2013	13,545.4 ⁴	318.9	72.7	306.8	566.9	761.4	816.6	490.0	79.4	192.4	214.8
2014	13,852.6 ⁴	329.1	79.7	328.8	654.3	741.7	871.4	532.9	94.1	199.1	159.1
2015	14,067.7 ⁴	354.4	71.2	359.3	634.8	751.0	899.0	573.1	81.7	233.1	142.3
2016	14,163.7 ⁴	346.9	82.4	361.8	657.0	748.2	928.7	570.3	80.9	230.8	124.7
2017	14,476.8 ⁴	369.0	84.5	348.1	677.2	742.2	880.3	588.0	84.3	260.1	106.9
2018	14,776.0 ⁴	338.6	97.2	367.7	747.6	720.2	988.7	551.2	85.6	264.8	103.9
2019	15,073.4 ⁴	355.1	90.3	394.7	809.2	737.1	992.1	527.7	84.0	266.1	104.3
2020	14,719.4	389.3	87.1	397.1	784.6	773.2	958.9	562.1	56.3	250.9	49.3
2021	14,825.2 ⁴	428.3	90.6	379.0	803.3	782.9	963.0	601.1	67.9	255.8	40.6
2022	15,155.2 ⁴	410.4	90.5	380.0	834.3	783.6	944.5	596.1	70.9	258.2	94.5
2023	15,813.4 ⁴	434.2	92.8	390.3	886.3	797.1	989.5	626.4	72.5	261.6	96.5
2024	16,369.4 ⁴	444.6	101.5	396.6	888.0	854.4	1,042.5	683.5	73.5	264.5	103.6

Notes:

1. The Labour Force Survey statistics for 2019 and preceding years are estimated based on the Population and Housing Census of Malaysia 2010

2. The Labour Force Survey statistics for 2020 and onwards are estimated based on the Population and Housing Census of Malaysia 2020

3. ¹For 1982 - 2000, industry was classified according to the "Malaysia Industrial Classification, (Updated) 1972" as follows:

A: Agriculture, forestry, livestock and fishing
 B: Mining and quarrying
 C: Manufacturing
 D: Electricity, gas and water
 E: Construction
 F: Wholesale and retail trade, restaurants and hotels
 G: Transport, storage and communications
 H: Finance, insurance, real estate and business services
 I: Community, social and personal services

4. ²For 2001 - 2009, industry was classified according to the "Malaysia Standard Industrial Classification (MSIC) 2000" as follows:

A: Agriculture, hunting and forestry
 B: Fishing
 C: Mining and quarrying
 D: Manufacturing
 E: Electricity, gas and water supply
 F: Construction
 G: Wholesale and retail trade; repair of motor vehicles, motorcycles and personal and household goods
 H: Hotels and restaurants
 I: Transport, storage and communications
 J: Financial intermediation
 K: Real estate, renting and business activities
 L: Public administration and defence; compulsory social security
 M: Education
 N: Health and social work
 O: Other community, social and personal service activities
 P: Private households with employed persons

5. ³For 2010 - 2022, industry was classified according to the "Malaysia Standard Industrial Classification (MSIC) 2008" as follows:

A: Agriculture, forestry and fishing
 B: Mining and quarrying
 C: Manufacturing
 D: Electricity, gas, steam and air conditioning supply
 E: Water supply; sewerage, waste management and remediation activities
 F: Construction
 G: Wholesale and retail trade, repair of motor vehicles and motorcycles
 H: Transportation and storage
 I: Accommodation and food service activities
 J: Information and communication
 K: Financial and insurance/takaful activities
 L: Real estate activities
 M: Professional, scientific and technical activities
 N: Administrative and support service activities
 O: Public administration and defence; compulsory social security
 P: Education
 Q: Human health and social work activities
 R: Arts, entertainment and recreation
 S: Others service activities
 T: Activities of households as employers

6. ⁴For year 2011-2019 & 2021-2024, total includes 'Activities of extraterritorial organizations and bodies'

Table F: Employed person by status of employment, Malaysia, 1982 - 2024

('000)

Time Series	Total	Status of Employment			
		Employer	Employee	Own Account Worker	Unpaid Family Worker
1982	5,249.0	158.1	3,320.7	1,159.8	610.4
1983	5,457.0	175.4	3,447.2	1,242.6	591.7
1984	5,566.7	141.4	3,673.4	1,130.1	621.8
1985	5,653.4	167.8	3,636.1	1,189.8	659.5
1986	5,760.1	180.4	3,560.7	1,308.2	710.6
1987	5,983.9	167.9	3,747.9	1,280.1	788.1
1988	6,157.2	204.7	3,799.1	1,377.1	776.3
1989	6,390.9	154.2	4,164.7	1,324.3	747.4
1990	6,685.0	194.6	4,412.4	1,383.9	694.0
1992	7,047.8	158.5	5,047.7	1,277.3	564.2
1993	7,383.4	209.5	5,272.8	1,350.7	550.1
1995	7,645.0	188.1	5,553.3	1,396.4	506.9
1996	8,399.3	251.1	6,071.4	1,514.2	562.6
1997	8,569.2	222.7	6,380.7	1,449.6	516.1
1998	8,599.6	252.7	6,307.9	1,521.6	517.4
1999	8,837.8	202.2	6,602.5	1,489.1	543.9
2000	9,269.2	275.8	6,882.6	1,586.0	524.8
2001	9,357.0	306.8	7,056.2	1,514.9	478.5
2002	9,542.6	288.6	7,320.2	1,479.8	453.9
2003	9,869.7	333.0	7,523.8	1,536.3	476.3
2004	9,979.5	354.7	7,445.0	1,678.1	501.7
2005	10,045.4	337.0	7,583.4	1,671.7	453.2
2006	10,275.4	396.9	7,632.9	1,733.4	512.2
2007	10,538.1	362.5	7,824.0	1,831.5	520.1
2008	10,659.6	371.4	7,951.1	1,851.1	486.0
2009	10,897.3	399.4	8,153.6	1,862.7	481.7
2010	11,899.5	439.3	9,010.2	1,954.7	495.4
2011	12,351.5	446.1	9,483.7	1,907.4	514.3
2012	12,820.5	476.2	9,620.0	2,117.3	607.0
2013	13,545.4	523.9	10,073.5	2,316.8	631.3
2014	13,852.6	511.5	10,447.6	2,267.2	626.3
2015	14,067.7	568.6	10,395.5	2,476.2	627.4
2016	14,163.7	486.4	10,534.2	2,522.3	620.9
2017	14,476.8	553.5	10,710.1	2,606.7	606.4
2018	14,776.0	547.2	10,700.4	2,859.2	669.1
2019	15,073.4	552.9	11,218.3	2,724.2	578.1
2020	14,719.4	499.8	11,443.3	2,309.9	466.3
2021	14,825.2	504.5	11,696.2	2,158.1	466.4
2022	15,155.2	535.5	11,904.7	2,257.4	457.6
2023	15,813.4	578.2	12,419.7	2,375.2	440.3
2024	16,369.4	609.8	12,857.5	2,516.4	385.6

Notes:

1. The Labour Force Survey statistics for 2019 and preceding years are estimated based on the Population and Housing Census of Malaysia 2010
2. The Labour Force Survey statistics for 2020 and onwards are estimated based on the Population and Housing Census of Malaysia 2020

Table G: Labour force indicators for selected countries, November 2024 - November 2025

Indicators	2024		2025											Data Source
	Nov	Dec	Jan	Feb	Mar	Apr	May	June	July	Aug	Sep	Oct	Nov	
Labour Force Participation Rate (LFPR) (%)														
South East Asia														
Malaysia	70.5	70.6	70.6	70.7	70.7	70.8	70.8	70.8	70.8	70.9	70.9	70.9	70.9	DOSM
Philippines	64.6	65.1	63.9	64.5	62.9	63.7	64.8	65.7	60.7	65.1	64.5	63.6	64.0	Philippine Statistics Authority
East Asia														
Hong Kong	56.9	56.9	56.9	56.9	56.9	56.8	56.7	56.7	57.0	57.2	57.1	57.0	56.9	Census and Statistics Department
Taiwan	59.3	59.3	59.3	59.3	59.3	59.3	59.3	59.4	59.5	59.6	59.5	59.5	59.6	National Statistics Republic of China
South Korea	64.4	64.7	64.7	64.8	64.8	64.8	64.7	64.5	64.4	64.4	64.8	64.5	64.6	Statistics Korea
Japan	63.5	63.4	63.2	63.2	63.3	63.7	64.0	64.2	63.9	64.0	64.2	64.2	64.1	Statistics Bureau of Japan
Oceania														
Australia	66.9	67.1	67.2	66.8	66.7	67.0	67.0	67.0	67.0	66.9	67.0	67.0	66.7	ABS
North America														
USA	62.5	62.5	62.6	62.4	62.5	62.6	62.4	62.3	62.2	62.3	62.4	n.a	62.5	BLS
Canada	65.4	65.4	65.5	65.3	65.2	65.3	65.3	65.4	65.2	65.1	65.2	65.3	65.1	Statistics Canada
Europe														
United Kingdom	78.4	78.5	78.5	78.6	78.6	78.7	79.0	79.0	78.9	79.0	79.0	79.0	n.a	ONS
Sweden	75.3	75.3	75.4	75.4	75.5	75.5	75.5	75.6	75.6	75.6	75.6	75.7	75.8	Statistics Sweden
Finland	67.2	66.8	67.8	67.0	68.0	69.1	70.4	71.2	69.8	68.7	68.3	69.2	68.1	Statistics Finland
Russia	63.4	63.2	62.2	62.4	62.6	62.7	62.9	63.0	63.3	63.2	63.2	n.a	n.a	Trading economics
Italy	66.5	66.8	67.0	66.8	66.9	66.7	67.1	66.9	66.6	66.5	66.7	66.7	66.5	National Institute of Statistics
Netherland	75.8	75.9	76.0	76.0	76.0	76.1	76.1	76.1	76.2	76.3	76.4	76.4	76.2	Statistics Netherlands
Unemployment rate (%)														
South East Asia														
Malaysia	3.2	3.1	3.1	3.1	3.1	3.0	3.0	3.0	3.0	3.0	3.0	3.0	2.9	DOSM
Philippines	3.2	3.1	4.3	3.8	3.9	4.1	4.1	3.7	5.3	3.9	3.8	5.0	4.4	Philippine Statistics Authority
East Asia														
Hong Kong	3.1	3.1	3.1	3.2	3.2	3.4	3.5	3.5	3.7	3.7	3.9	3.8	3.8	Census and Statistics Department
Taiwan	3.4	3.3	3.3	3.3	3.4	3.3	3.3	3.4	3.4	3.5	3.4	3.4	3.3	National Statistics Republic of China
South Korea	2.7	3.7	2.9	2.7	2.9	2.7	2.7	2.6	2.5	2.6	2.5	2.6	2.7	Statistics Korea
Japan	2.5	2.5	2.5	2.4	2.5	2.5	2.5	2.5	2.3	2.6	2.6	2.6	2.6	Statistics Bureau of Japan
Oceania														
Australia	3.9	4.0	4.1	4.1	4.1	4.1	4.1	4.3	4.3	4.3	4.5	4.3	4.3	ABS
North America														
USA	4.2	4.1	4.0	4.1	4.2	4.2	4.2	4.1	4.2	4.3	4.4	n.a	4.6	BLS
Canada	6.9	6.7	6.6	6.6	6.7	6.9	7.0	6.9	6.9	7.1	7.1	6.9	6.5	Statistics Canada
Europe														
United Kingdom	4.5	4.5	4.5	4.5	4.6	4.7	4.7	4.8	4.8	4.9	5.1	5.2	n.a	ONS
Sweden	8.6	8.8	8.7	8.7	8.7	8.7	8.7	8.7	8.8	8.9	8.9	8.9	9.0	Statistics Sweden
Finland	8.1	8.1	9.5	9.4	10.1	10.0	10.5	9.9	9.3	9.3	9.1	9.6	9.7	Statistics Finland
Russia	2.3	2.3	2.4	2.4	2.3	2.3	2.2	2.2	2.2	2.1	2.2	2.2	2.1	Trading economics
Italy	6.2	6.4	6.4	6.1	6.3	6.1	6.5	6.2	6.1	6.0	6.1	5.8	5.7	National Institute of Statistics
Netherland	3.7	3.7	3.8	3.8	3.9	3.8	3.8	3.8	3.8	3.9	4.0	4.0	4.0	Statistics Netherlands

Note:

n.a. not available

This page is deliberately left blank

This page is deliberately left blank

LABOUR FORCE REPORT, MALAYSIA NOVEMBER 2025

Malaysian Bureau of Labour Statistics,
Department of Statistics Malaysia.

For further information:

Malaysian Bureau of Labour Statistics,
Department of Statistics Malaysia,
Level 3, Block C7,
Complex C,
Federal Government Administrative Centre,
62514 Putrajaya, MALAYSIA.

E-mail: mbls@dosm.gov.my

Telephone: 03-8090 4000

I SSN 2735-1831



9 772735 183006

