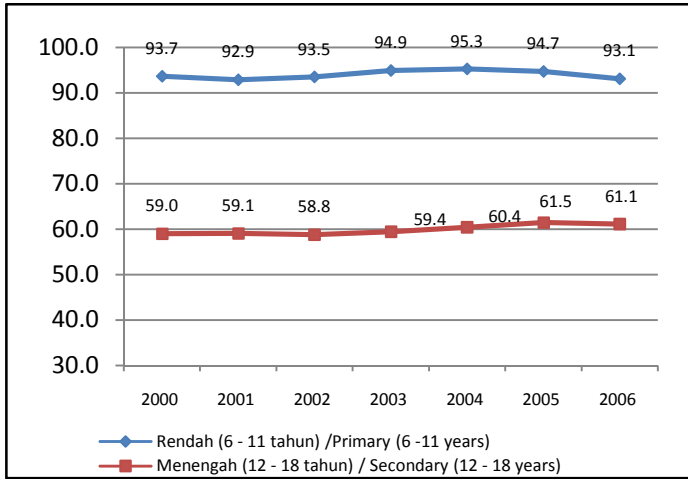


Penunjuk sosioekonomi terpilih Malaysia, 2000-2006
Selected socio-economic indicators Malaysia, 2000-2006

<table border="1"> <caption>Bilangan penduduk bagi setiap doktor</caption> <thead> <tr> <th>Tahun</th> <th>Bilangan</th> </tr> </thead> <tbody> <tr><td>2000</td><td>1,504</td></tr> <tr><td>2001</td><td>1,487</td></tr> <tr><td>2002</td><td>1,406</td></tr> <tr><td>2003</td><td>1,377</td></tr> <tr><td>2004</td><td>1,402</td></tr> <tr><td>2005</td><td>1,300</td></tr> <tr><td>2006</td><td>1,214</td></tr> </tbody> </table>	Tahun	Bilangan	2000	1,504	2001	1,487	2002	1,406	2003	1,377	2004	1,402	2005	1,300	2006	1,214	<p>Bilangan penduduk bagi setiap doktor <i>Population per doctor</i></p>									
Tahun	Bilangan																									
2000	1,504																									
2001	1,487																									
2002	1,406																									
2003	1,377																									
2004	1,402																									
2005	1,300																									
2006	1,214																									
<p>Bagi tahun 2006, nisbah doktor kepada penduduk adalah 1 doktor untuk setiap 1,214 penduduk.</p>	<p>Sebelum <i>Previous</i> 1: 1300</p>																									
<p><i>The ratio of doctor to population in 2006 is 1 doctor to 1,214 population.</i></p>	<p>Sekarang <i>Current</i> 1: 1,214</p>																									
<table border="1"> <caption>Bilangan doktor dan hospital</caption> <thead> <tr> <th>Tahun</th> <th>Bilangan doktor</th> <th>Bilangan Hospital</th> </tr> </thead> <tbody> <tr><td>2000</td><td>15,619</td><td>114</td></tr> <tr><td>2001</td><td>16,146</td><td>115</td></tr> <tr><td>2002</td><td>17,442</td><td>116</td></tr> <tr><td>2003</td><td>18,191</td><td>117</td></tr> <tr><td>2004</td><td>18,246</td><td>119</td></tr> <tr><td>2005</td><td>20,105</td><td>122</td></tr> <tr><td>2006</td><td>21,937</td><td>128</td></tr> </tbody> </table>	Tahun	Bilangan doktor	Bilangan Hospital	2000	15,619	114	2001	16,146	115	2002	17,442	116	2003	18,191	117	2004	18,246	119	2005	20,105	122	2006	21,937	128	<p>Bilangan doktor dan hospital <i>Number of doctors and hospitals</i></p>	
Tahun	Bilangan doktor	Bilangan Hospital																								
2000	15,619	114																								
2001	16,146	115																								
2002	17,442	116																								
2003	18,191	117																								
2004	18,246	119																								
2005	20,105	122																								
2006	21,937	128																								
<p>Bagi tempoh 2001-2006, bilangan doktor dan hospital adalah semakin meningkat.</p>	<p>Bilangan doktor <i>Number of Doctors</i></p> <table border="1"> <tr> <td>Sebelum <i>Previous</i></td> <td>Sekarang <i>Current</i></td> </tr> <tr> <td>20,105</td> <td>21,937</td> </tr> </table>		Sebelum <i>Previous</i>	Sekarang <i>Current</i>	20,105	21,937																				
Sebelum <i>Previous</i>	Sekarang <i>Current</i>																									
20,105	21,937																									
<p><i>From 2001 to 2000, the number of doctors and hospitals has gradually increased.</i></p>	<p>Bilangan Hospital <i>Number of Hospitals</i></p> <table border="1"> <tr> <td>Sebelum <i>Previous</i></td> <td>Sekarang <i>Current</i></td> </tr> <tr> <td>122</td> <td>128</td> </tr> </table>		Sebelum <i>Previous</i>	Sekarang <i>Current</i>	122	128																				
Sebelum <i>Previous</i>	Sekarang <i>Current</i>																									
122	128																									
<p>Sumber : Jabatan Perangkaan Malaysia dan Kementerian Kesihatan Malaysia <i>Source: Department of Statistics, Malaysia and Ministry of Health, Malaysia</i></p>																										



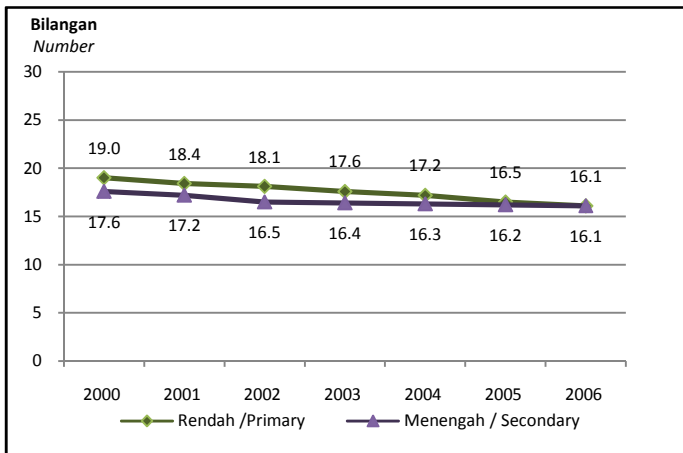
Bilangan penduduk bersekolah (kadar bersekolah)
Percentage of population enrolled in schools (enrolment rate)

Kadar penduduk bersekolah di sekolah rendah menurun pada tahun 2006 sebanyak 1.6 peratus. Begitu juga kadar penduduk bersekolah di sekolah menengah menurun sebanyak 0.4 peratus.

Sekolah Rendah <i>Primary school</i>	
Sebelum	Sekarang
<i>Previous</i>	<i>Current</i>
94.7	90.1

Enrolment rate in primary school as well as secondary school decreased 1.6 per cent and 0.4 per cent respectively in 2006.

Sekolah Menengah <i>Secondary School</i>	
Sebelum	Sekarang
<i>Previous</i>	<i>Current</i>
61.5	60.0



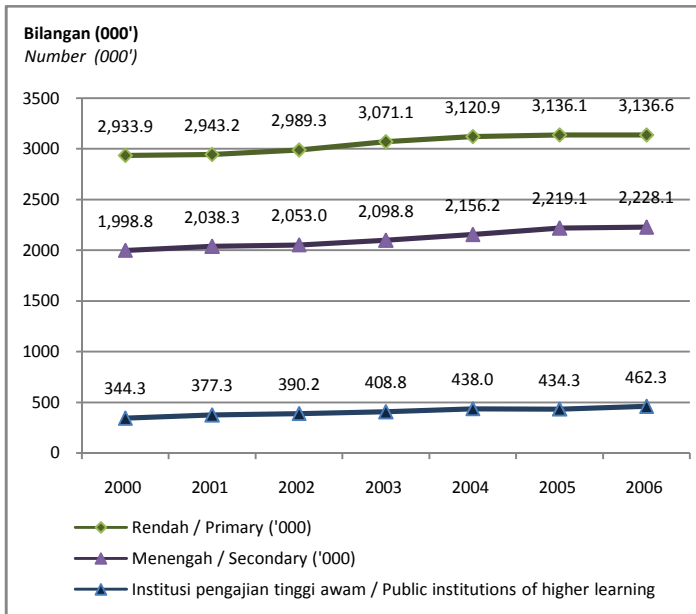
Bilangan murid bagi setiap guru
Number of students per teacher

Nisbah bilangan murid sekolah rendah dan menengah untuk setiap guru pada tahun 2006 adalah 16.1

Sekolah Rendah <i>Primary school</i>	
Sebelum	Sekarang
<i>Previous</i>	<i>Current</i>
1:16.5	1:16.1

The ratio of teacher to primary school and secondary school student for 2006 is 16.1.

Sekolah Menengah <i>Secondary school</i>	
Sebelum	Sekarang
<i>Previous</i>	<i>Current</i>
1:16.2	1:16.1



Bilangan pelajar bagi sekolah rendah, menengah serta penuntut di institusi pengajian tinggi awam

Number of students in primary, secondary schools and students in public institutions of higher learning

Bagi tempoh 2000-2006, bilangan pelajar sekolah rendah dan menengah serta penuntut di institusi pengajian tinggi awam secara keseluruhannya menunjukkan peningkatan.

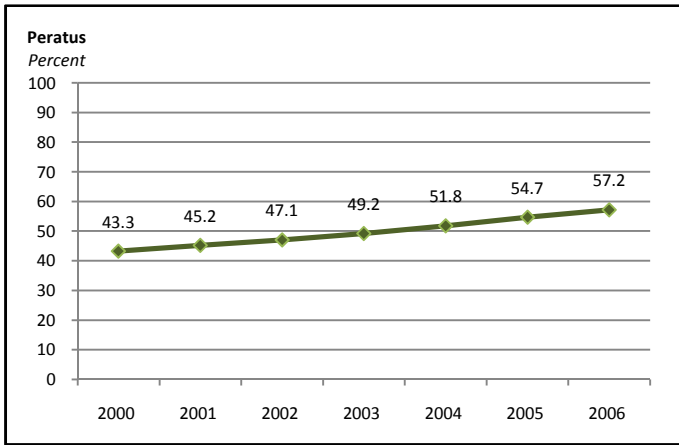
Sekolah Rendah <i>Primary School</i>	
Sebelum	Sekarang
<i>Previous</i>	<i>Current</i>
3,136.1	3,136.6

From 2001-2006, the number of students in primary and secondary schools as well as students in public institutions of higher learning increased steadily.

Sekolah Menengah <i>Secondary school</i>	
Sebelum	Sekarang
<i>Previous</i>	<i>Current</i>
2,219.1	2,219.1

Institusi Pengajian Tinggi Awam <i>Public Institutions of higher learning</i>	
Sebelum	Sekarang
<i>Previous</i>	<i>Current</i>
434.3	462.3

Sumber : Jabatan Perangkaan Malaysia dan Kementerian Kesihatan Malaysia
Source: Department of Statistics, Malaysia and Ministry of Health, Malaysia



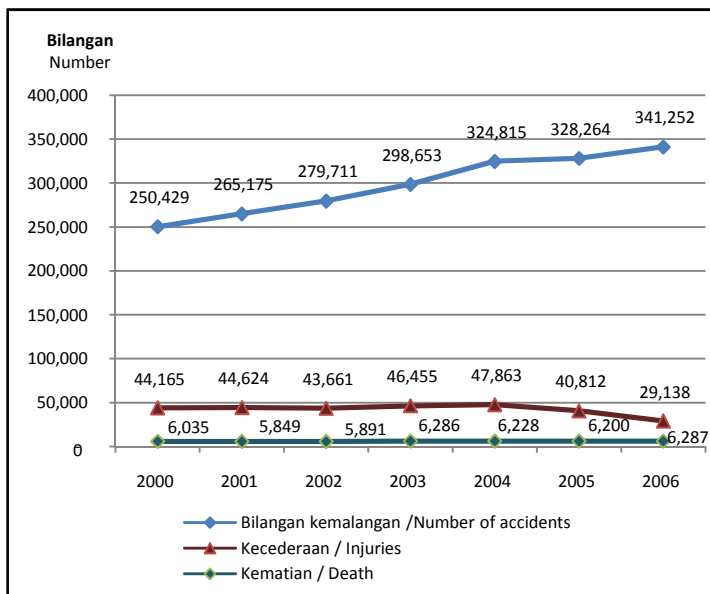
Bilangan kenderaan bermotor bagi setiap 100 penduduk
Number of motor vehicles per 100 population

Tahun 2006 mencatatkan bilangan kenderaan bermotor paling tinggi mencecah 57 kenderaan bermotor untuk setiap 100 penduduk.

Sebelum <i>Previous</i>	Sekarang <i>Current</i>
54.7	57.2

The year 2006 recorded the highest number of vehicles at over 57 vehicles per 100 population.

Sumber : Jabatan Perangkaan Malaysia dan Jabatan pengangkutan Jalan Malaysia
Source: Department of Statistics, Malaysia and Road Transport Department, Malaysia



Bilangan kemalangan jalan raya, kecederaan dan kematian yang dilaporkan.

Number of road accidents, injuries and casualties reported

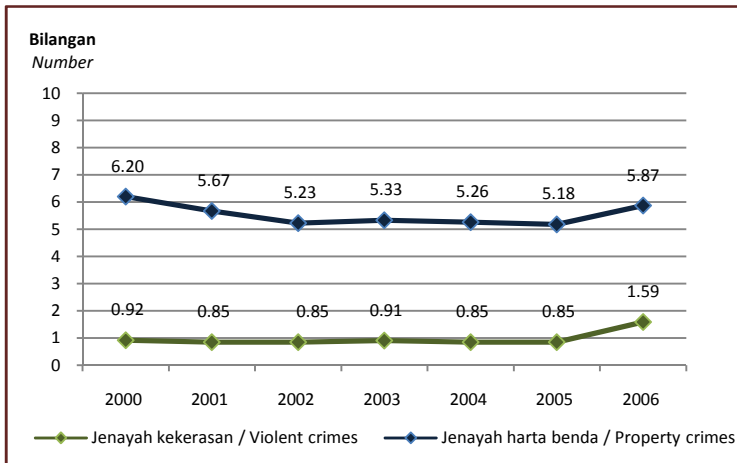
Bilangan kemalangan jalan raya telah meningkat kepada 341,252 pada 2006 melibatkan 29,138 kecederaan dan 6,287 kematian.

Kemalangan Accident	
Sebelum <i>Previous</i>	Sekarang <i>Current</i>
328,264	341,252

Numbers of road accidents have increased to 341,252 in 2006 which involved 29,138 of injuries and 6,287 of deaths.

Kecederaan Injuries	
Sebelum <i>Previous</i>	Sekarang <i>Current</i>
40,812	29,138

Kematian Death	
Sebelum <i>Previous</i>	Sekarang <i>Current</i>
6,200	6,287



Bilangan jenayah bagi setiap 1,000 penduduk
Number of crimes per 1,000 population

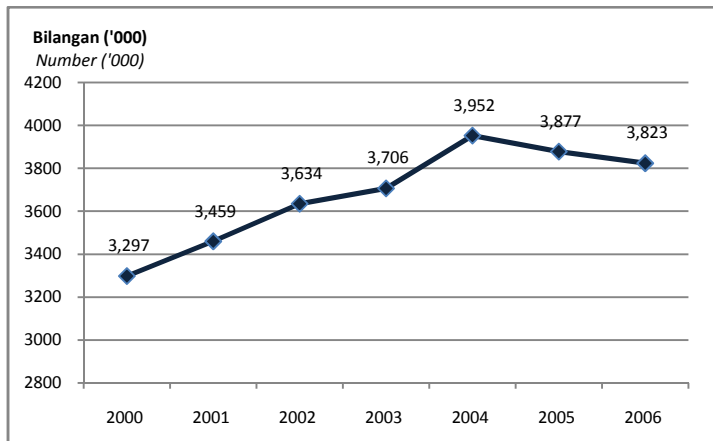
Bagi tempoh 2000-2006, bilangan jenayah harta benda di Malaysia secara purata adalah 5 jenayah bagi setiap 1000 penduduk manakala jenayah kekerasan adalah 1 jenayah bagi setiap 1000 penduduk.

Jenayah kekerasan Violent Crime	
Sebelum <i>Previous</i>	Sekarang <i>Current</i>
5.18	5.87

From 2000-2006, the average number of property crimes is 5 crimes per 1000 population while violent crimes is 1 crime per 1000 population.

Jenayah Harta Benda Property Crime	
Sebelum <i>Previous</i>	Sekarang <i>Current</i>
0.85	1.59

Sumber : Jabatan Perangkaan Malaysia dan Polis Diraja Malaysia
Source: Department of Statistic, Malaysia and Royal Malaysia Police

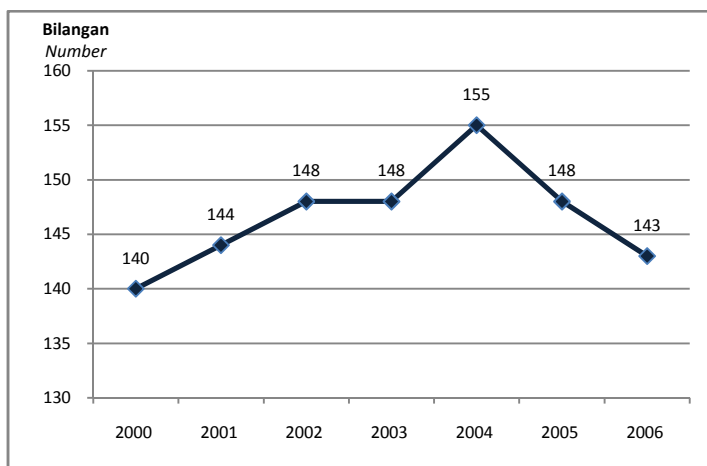


Purata edaran akhbar harian ('000)
Average daily newspaper circulation ('000)

Selepas mengalami peningkatan secara berterusan dari tahun 2000 hingga 2004, purata edaran akhbar harian didapati menurun mulai tahun 2005.

Sebelum Previous	Sekarang Current
3,877	3,823

Average daily newspaper circulation experienced an upward trend between 2000 and 2004. However, it started to decline after 2005.



Purata edaran akhbar harian bagi setiap 1,000 penduduk
Average daily newspaper circulation per 1,000 population

Purata edaran akhbar harian menurun secara mendadak pada tahun 2005 sebanyak 148 akhbar setiap 1000 penduduk.

Sebelum Previous	Sekarang Current
148	143

Average daily newspaper circulation per 1000 population drastically dropped to 148 newspapers in 2005

Sumber : Jabatan Perangkaan Malaysia dan pelbagai agensi akhbar
Source: Department of Statistics, Malaysia and various newspaper agency